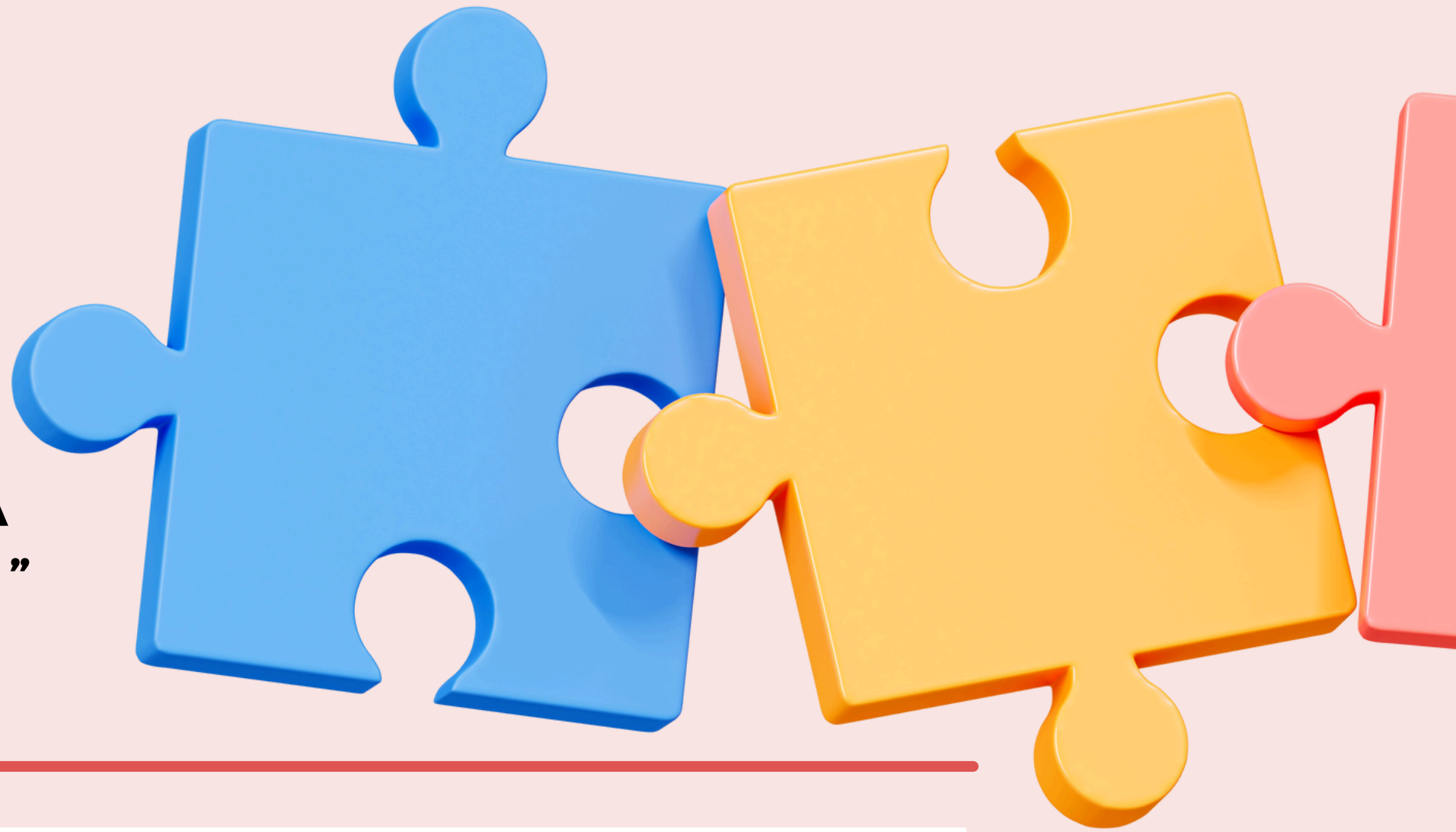


friday club schedule 2024/25



**“AROUND EVERY CORNER A
NEW OPPORTUNITY AWAITS”**

Be the person God has called you to be

BEFORE SCHOOL....

- 8:15am**
- Breakfast Club, St Mary's Dining Hall
 - Y11 Breakfast Session in MFL - Invite Only MFL1 (Miss Garcia):
8am

LUNCHTIME - 1ST HALF

- 12:25pm**
- MFL - Champions League of Linguists in MFL2 (Mrs Rance)
- until**
- Geography Film Club in G1 (Miss Barron)
- 12:55pm**
- Colouring Club in the EMS (Miss Seaman)
 - Student Librarians (Ms Jawid)

LUNCHTIME - 2ND HALF

- 12:55pm**
- SVP Catholic Life in RE1 (Miss Welsh)
- until**
- Geography Film Club in G1 (Miss Barron)
- 1:20pm**
- PE Inclusive Club - Invite only Gym (Mr Wardman)
 - All Years Basketball in the Sports Hall (Mr Healey)
 - Colouring Club in the EMS (Miss Seaman)
 - Social Justice Club in the Library (Ms. Jawid)
 - Student Librarians in the Library (Ms Jawid)

AFTER SCHOOL....

- From**
- KS3/4 Academic Support in English in E1 (Miss Chapman) -
3:20pm WEEK A only
 - Art Open Studio for KS4 only (Mrs Pilling)
 - Worship Choir in MU2 (Miss Conway)



#thisishow

WEDOITHERE