



Bishopton Road West, Stockton-on-Tees, TS19 0QH
T: 01642 704970
E: enquiries@olsb.bhcet.org.uk
W: www.olsb.bhcet.org.uk

OUR LADY & ST. BEDE
CATHOLIC ACADEMY

Head Teacher: M Wilkinson
CEO: M Shorten M.Ed., BA (Hons)
Chair of Directors: Y Coates

15th September 2023

Dear Parent/Carer,

It's been lovely to welcome our pupils back and there is a real sense of positivity around the school. We are especially proud of the way our new Year 7 pupils have adapted to and embraced new routines.

We remain as committed as ever to ensuring every child maximises every learning opportunity and is supported in doing so by our outstanding teachers and support staff. With that in mind, and to support our school expansion, we are privileged to be able to welcome a number of new staff to our school to complement our excellent existing team.

While academic success is a major priority, ensuring your child receives a holistic education in a happy, safe and secure environment is of equal importance.

Please encourage your child to take full advantage of the many enrichment clubs and opportunities we offer and support us by ensuring your child is punctual to school and adheres to our high expectations around uniform, department and learning routines.

Attendance is a key driver of success and therefore a key focus area for us this academic year. The attached attendance infographics set out the stark impact school non-attendance has on the success of your child. Please **therefore support your child's future success by ensuring your child is in school and medical appointments are made outside of school hours.**

If an appointment during the school day is unavoidable, please note that pupils should always attend school before their appointment and return to school after the appointment.

School requires medical proof to be provided for all medical/dental appointments and must be notified of the appointment in advance to allow school systems to be updated.

We believe that successful partnerships are based on strong relationships and positive communication. To that end, may I take this opportunity to thank you for your continued support and assure you of our total commitment to providing your child with the best possible educational experience here at Our Lady and St Bede Catholic Academy.

Best wishes,

Mrs M Wilkinson
Headteacher



ATTENDANCE

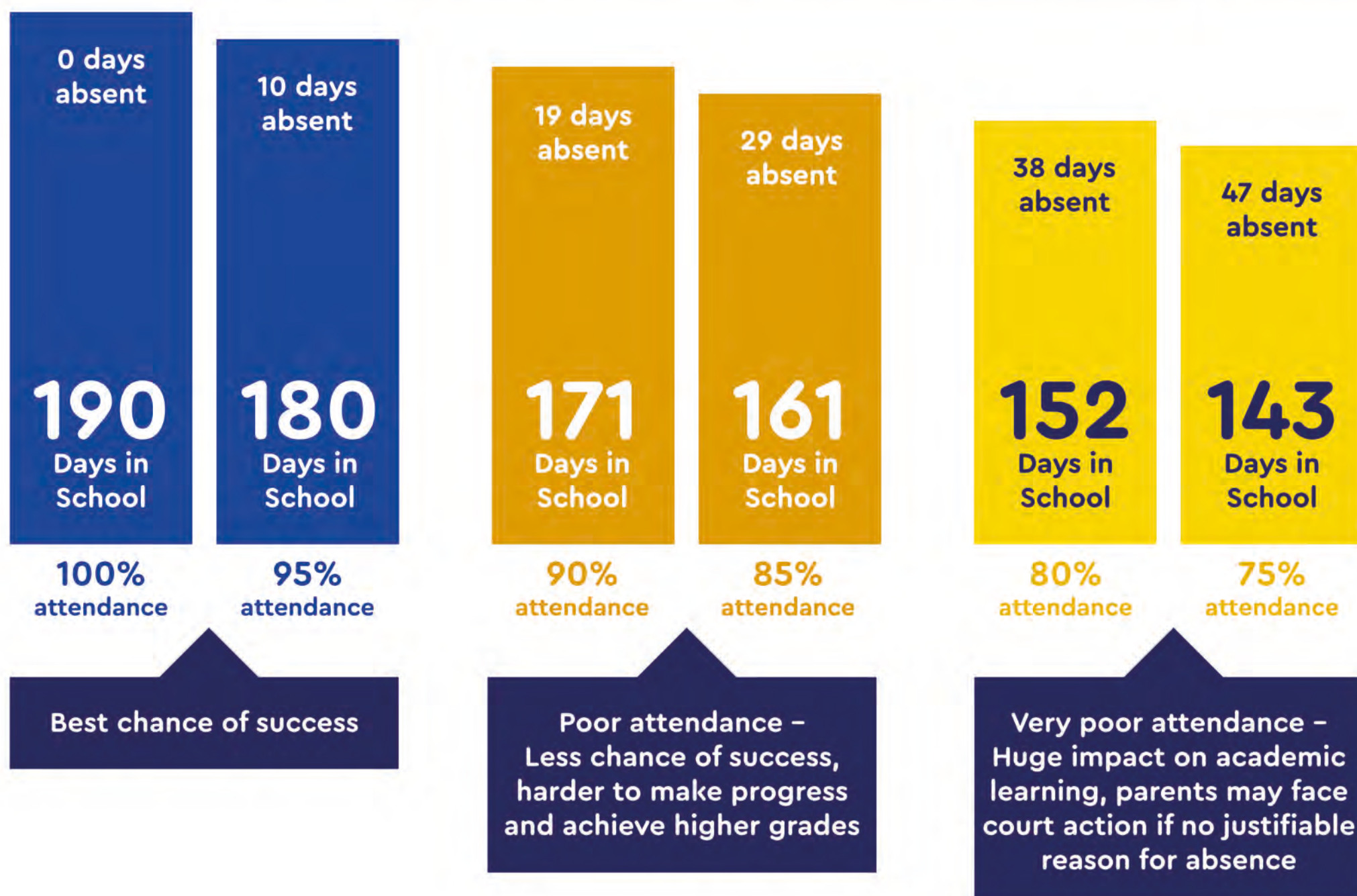
Every School Day Counts!



365 days in a calendar year
190 school days each year
175 non-term days each year

(All the time you need for shopping, holidays and appointments)

Good attendance means being in school at least 95% of the time or 180 to 190 days
Please don't let your child miss out on the education they deserve



Attend **Today** = Achieve **Tomorrow!**



A Member Of
**Bishop
Hogarth**
Catholic Education Trust

ATTENDANCE

Every School Day Counts!



5 Minutes late each school day
=
3 school days lost each year



Every day your child is absent impacts on their education and academic achievement

There is a clear link between attendance and attainment

95% Attendance	↔ 9 ↔ Days Absent	↔ 2 ↔ Weeks Absent	↔ 50 ↔ Lessons Missed
90% Attendance	↔ 19 ↔ Days Absent	↔ 4 ↔ Weeks Absent	↔ 100 ↔ Lessons Missed
85% Attendance	↔ 29 ↔ Days Absent	↔ 6 ↔ Weeks Absent	↔ 150 ↔ Lessons Missed
80% Attendance	↔ 38 ↔ Days Absent	↔ 8 ↔ Weeks Absent	↔ 200 ↔ Lessons Missed
75% Attendance	↔ 48 ↔ Days Absent	↔ 10 ↔ Weeks Absent	↔ 250 ↔ Lessons Missed
70% Attendance	↔ 57 ↔ Days Absent	↔ 11.5 ↔ Weeks Absent	↔ 290 ↔ Lessons Missed
65% Attendance	↔ 67 ↔ Days Absent	↔ 13.5 ↔ Weeks Absent	↔ 340 ↔ Lessons Missed

Missing School = Missing Out!