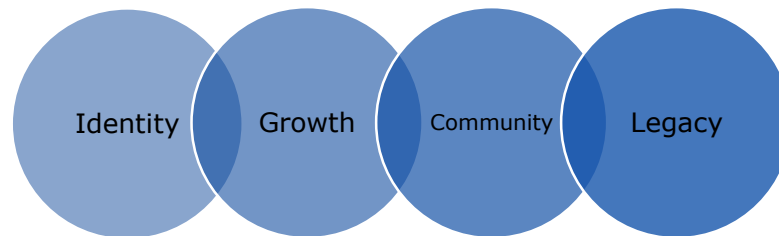


Prior Knowledge

- Sculpture is three-dimensional art work, created using methods such as modelling, carving or joining (Y2, Autumn Term)
- There are 4 main types of sculpture; stone carving, bronze casting, wood carving and clay firing (Y4, Autumn Term)

Key Knowledge

- When sculpting, artists plan, design and experiment with shape, texture and colour, using tools to carve or model details.
- Ancient Maya masks were sculpted for rituals, ceremonies and to show importance – often worn by rulers, priests or warriors.
- Maya masks had long narrow faces to symbolise power, and were decorated with symbols of animals, gods and nature.
- Maya artists used strong colours with meaning, including:
 - Maya blue (from indigo and clay) – symbol of the sky, water and gods.
 - Red – symbol of life and blood.
 - Green/jade – symbol of growth, fertility and the natural world.
- Maya sculpture shows stylised features and symbolic patterns – less realistic than Ancient Greek sculpture, but full of meaning.



Equipment



Clay



Modelling
Tools

Key Vocabulary

sculpture	symbol	modelling
illustrated	glyph	ceremonial
carve	mask	pattern
texture	relief	incising

Sculpting Techniques



Slab Building
Roll out flat slabs
and cut out the shape



Pinching and Pressing
Pinch and press
to create forms



Adding (Modelling)
Roll and attach
pieces

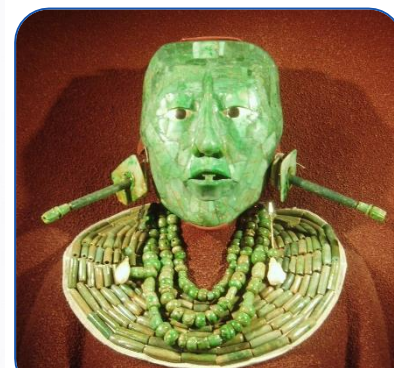


Carving (Incising)
Scratch lines
and patterns



Smoothing and Blending
Smooth and
blend joins

*How can we bring
the spirit of the
Maya to life
through sculpture?*



Pakal the Great's Jade Funerary Mask
The life-sized jade mosaic mask was found in the tomb of Pakal the Great, a famous Maya king of Palenque (Mexico). The mask is made of precious green jade, symbolising life, nature and rebirth.