



Welcome to Year 3

Teachers

Mr Newell

Miss Saeed

Support teacher

**Nadia, Kerry,
Jayne, Charlotte
and Lucy.**

Year 3 Timetables

YEAR 3 - Troll

	MONDAY	TUESDAY	WEDNESDAY	THURSDAY PPA Afternoon	FRIDAY
8.45-8.55	Registration & SODA	Registration & SODA	Registration & SODA	Registration & SODA	Registration & SODA
8.55-9.10 9.10-9.40	Maths meeting Guided reading	Maths meeting Guided reading	Maths meeting Guided reading	Maths meeting Guided reading	Maths meeting Guided reading
9.40-10.45	Maths	Maths	Maths	Maths	Maths
10.45-11.00	BREAK				
11:00-12:15	Literacy	Literacy	Literacy	Literacy	Literacy
12.15-12.45	LUNCH TIME				
12.45-1.45	IPC	IPC	IPC	12.45-1.30 Kerry and Nadia PSHE	Computing
1.45-2.45	IPC	Indoor PE	IPC	1.30-2.30 Outdoor PE 2.30-2.45 Kerry and Nadia	Spelling test PSHE
	Sharing Assembly		GD/SEAL Assembly		

Year 3 Timetables

YEAR 3 - Giant

	MONDAY	TUESDAY	WEDNESDAY PPA Afternoon	THURSDAY	FRIDAY
8.45-8.55	Registration & SODA	Registration & SODA	Registration & SODA	Registration & SODA	Registration & SODA
8.55-9.10 9.10-9.40	Maths meeting Guided reading	Maths meeting Guided reading	Maths meeting Guided reading	Maths meeting Guided reading	Maths meeting Guided reading
9.40-10.45	Maths	Maths	Maths	Maths	Maths
10.45-11.00	BREAK				
	Literacy	Literacy	Literacy	Literacy	Literacy
	Literacy	Literacy	Literacy	Literacy	Literacy
12.15-12.45	LUNCH TIME				
12.45-1.45	IPC	IPC	12.45-1.30 Kerry and Nadia PSHE	IPC	Computing
1.45-2.45	Indoor PE Sharing Assembly	IPC	1.30-2.30 Outdoor PE 2.30-2.45 Kerry and Nadia GD/SEAL Assembly	IPC	PSHE/Spelling test

Curriculum

Maths Mastery- We will be continuing to follow the Maths Mastery scheme. The curriculum overview is on the school website. This year we are following an abridged version, which ensures children catch up on what they missed last year.

Literacy- We base all of our Literacy around a Core Text which is linked to the IPC project.

IPC Project-

Autumn: Footprints from the past.

Spring: Active Planet.

Summer: Different Places, Similar Lives (Including Land, Sea and Sky).

Curriculum

PE- Children will have two P.E sessions per week one will be outdoor and the other will be an indoor session, both taught by their class teacher.

PE Kits: For indoor PE and outdoor PE: White t-shirt; navy shorts or grey/navy tracksuit bottoms; trainers. This year, children should come to school in their PE kit on the days they have PE.

Library:

We cannot currently use the library but library books are being brought to us. Children will have an opportunity to change their books weekly. Books are then quarantined for 72 hours to allow children to safely share books.

Home Learning

All home learning will now be on Seesaw. If your child does not have access to a device, please see their class teacher and we will arrange for home learning to be sent home.

iii) Upper Key Stage 2:

- 5 x 30 minutes reading each week
- Spellings to learn for weekly test
- 2 x Home Learning tasks (approx 30-45 mins) per week – one literacy and one numeracy
- Home learning project – 1 for each IPC unit – these are not compulsory
- Extension tasks – the teachers will show the children in class any activities on Igfl or other websites that can be accessed at home.

What if my child doesn't complete their homework?

If this is regular they will miss the end of term merit treat as they will not have enough merits.

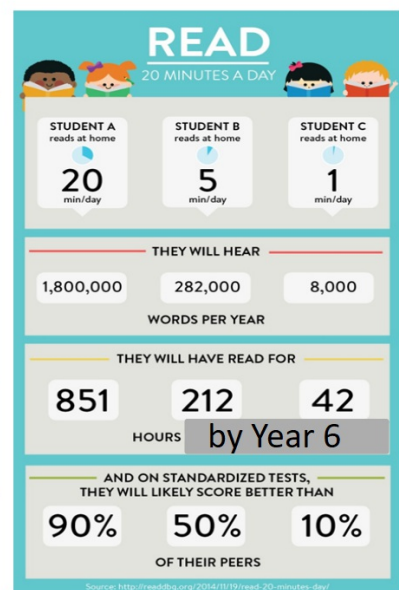
Home Learning

What is the role of the parent?

- to support the child in completing the homework - the best way to support your child is to ensure they have a suitable place to do their learning, to ensure they don't leave their work until the last minute, to read and discuss books with them, to help practice their spellings and if needed to guide them with their task. However, this does not mean doing their homework for them because if the work is too hard for them to do independently then the teacher needs to know this so they can help your child;
- to ensure the child completes their homework and hands it in on time;
- to provide the appropriate conditions for the child to complete their homework;
- if appropriate, to write a comment to the teacher on the level of support the child has received from home with the task/work;
- to encourage your child to actively seek their homework if they are absent on a Friday.

Home Reading

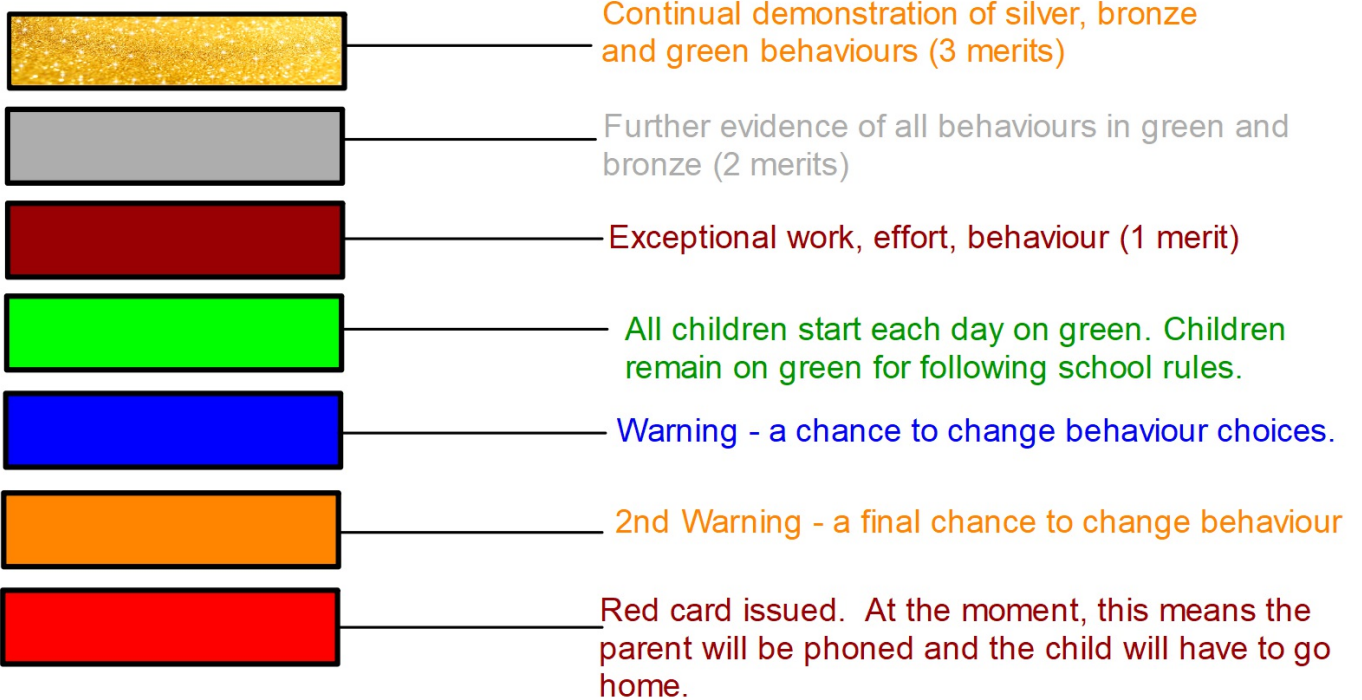
- Each child is expected to read every day.
 - KS2 20 minutes
- This can include a bedtime story or reading a book with several siblings.
- Reading diaries will be checked daily so please ensure that your child brings it in every day.
- Children who read daily do significantly better in every area of their learning.



How to fill in the homework diaries:

Date	Book and page number	Amount of time spent reading	Signature
5/9/18	<u>Gangsta Granny</u> p10-15	20 mins	Leila Kent
6/9/18	<u>Gangsta Granny</u> p15-17	20 mins	Leila Kent

Behaviour Policy



Uniform

No trainers

School uniform to be ordered online

At the moment, children should come to school in their PE kit on the days that they do PE.

Attendance & Punctuality

Year: 3

Start Time: 8.45am

Home Time: 2:45pm

Gate: Car Park.

Please note: if you are running late to pick up your child it is really important that you let the office know so that we know that you are on your way.
Please remember that we cannot let children go home with anybody who is not on the school contact list for their own safety

Contacts

We need three contacts for each child. This ensures that we will always be able to contact someone when needed.

Procedure for absences

If your child is not attending school and we have not heard from you by 9.30am then we will start to call **all** the contact numbers that you have provided in order to gain an explanation for the absence. If we still have not been able to ascertain where your child is then we will make a home visit. However if we still haven't been able to get a response then we will report it to the police as your child will then be classed a 'missing child'.

This procedure is to ensure that we know where your child is and that you are all safe. Please let us know in good time why your child is absent from school.

Concerns/Issues

We recognise communication is trickier this year. Please speak to the person on the gate or call the office to ask for the class teacher to phone you.

1) Speak to the adult on the gate or contact via info@oxfordgardens.rbkc.sch.uk

2) Speak to our learning mentors (Hamid, Robert, Lynn, Terry or Tony) if you are concerned about anything at **lunchtime**

3) If you are still unhappy speak to one of the Senior Leaders:
Head Teacher - Sarah Cooper
Deputy Head Teachers - Leila Kent & Eileen Keogan
Assistant Head Teachers - Jess Wilson & Lauren Potter

PLEASE DO NOT APPROACH ANOTHER PARENT OR CHILD - IT IS ALWAYS BETTER TO GO VIA THE SCHOOL.

Governors

What is a school governor?

School governors are volunteers who, as part of the Governing Body, work with the Headteacher to manage the school. Every school must have a governing body, whose main role is to:

- Ensure clarity of vision, ethos and strategic direction
- Hold the Headteacher and other leaders to account for the educational performance of the school and its pupils, and the performance management of staff
- Oversee the financial performance of the school and make sure its money is well spent

Governors are there to take a strategic overview rather than be involved in the day-to-day running of the school.

Find out who are our governors and what they do on the website

Website

Remember; the website is our main means of communication so please check it regularly.

[calendar](#)

[class news](#)

[school news](#)

[policies](#)

[photos](#)

Twitter- @ogpsw10

Follow us on instagram - ogpschool

Communication

1) Website

2) Email:

All communication will be emailed out, a paper copy is available on request from the office.

We need you to register with **School Gateway** it is extremely easy and you can do this in one of 2 ways:

- 1) Download the school gateway app (it's free)
- 2) Go to www.schoolgateway.com

When you visit the School Gateway

website or app for the first time, please select '**New User**' and enter your **email address and the mobile telephone number you have registered with the school.**

Schoolgateway

Keeping up with what's going on at school is easier than ever

The system will send a PIN code to your phone; please enter this PIN code and your account will be activated for you. As soon as you've got the system set-up, you'll be able to receive e-mails and texts from the school with no cost to the school, you will also be able to make some payments via the app/website rather than send cash or cheques.

The school **MUST HAVE** your **CURRENT** email address or mobile telephone number, please make sure that we have your most recent details.

Feedback and Marking

After conducting extensive research and trialling different systems, we introduced a new Feedback and Marking policy last year. This will continue this year, as it was very effective.

The most effective feedback identifies children's misconceptions, gives children an understanding of how to improve their work and then allows them time to make those improvements. The majority of this will be conducted verbally, both to the whole class and in small groups. Children will have a chance at the beginning of each lesson, to make the suggested improvements and use the adults in the room to support them in doing this.

We will still be ticking the SC (and the correct calculations in Maths) and acknowledging work. We will no longer be highlighting children's books. We will teach the children the most effective ways to respond to this feedback.

You can find the policy [here](#). If you have any questions about Feedback and Marking, please see Leila Kent. 