



# PARK ROAD

## COMMUNITY PRIMARY SCHOOL

# WEEKLY UPDATE



3  
October  
2025



### Next Week in School at a Glance

Monday 6	Tuesday 7	Wednesday 8	Thursday 9	Friday 10
<ul style="list-style-type: none"><li>* Lunch Menu week 3</li><li>* Flu immunisations</li><li>* 3.15 - 4.15 pm Kids with Bricks (Lego) Y1-6</li><li>* 3.15 - 4.15 pm Baking Y5, 6</li></ul>	<ul style="list-style-type: none"><li>* 8.15 am Innov8, Happiness &amp; Animal Welfare mtg</li><li>* Year 6 trip to Western Approaches</li><li>* 3.15 - 4.15 pm Performing Arts Y1, 2, 3</li><li>* 3.15 - 4.15 pm Choir Y4, 5, 6</li><li>* 3.15 - 4.15 pm Baking Y3, 4</li></ul>	<ul style="list-style-type: none"><li>* 3.15 - 4.15 pm Crochet Y6</li><li>* 3.15 - 4.15 pm Gardening Y4, 5</li><li>* R/Y1 Parents Reading Workshop</li></ul>	<ul style="list-style-type: none"><li>* 3.15 - 4.15 pm Cross Country Y4, 5, 6</li><li>* 3.15 - 4.15 pm Baking Y1, 2</li></ul>	<ul style="list-style-type: none"><li>* Hello Yellow Non-Uniform Day</li></ul>

## Unique Individuals Learning Together

### Mrs. Quigley's weekly message:

This week, we've been shining a spotlight on our value 'collaboration'. It's been wonderful to see how our children have embraced this value in so many ways. From Reception to Year 6, children have been playing together with kindness, working in teams during lessons and supporting one another in and out of the classroom. Whether it was forest school in the outdoor area, solving maths challenges in pairs or helping a friend who needed a hand, the spirit of teamwork has been lovely. Well done to all our children for showing what it means to be part of a caring and cooperative school community!

Next week, we're excited to welcome parents of Reception and Year 1 children to our Reading Workshops. These sessions are a great opportunity to learn how we teach early reading and how you can support your child at home. Please check your child's class Seesaw for full details.

Our Open Day for Reception 2026 admissions is just around the corner! Our brilliant Year 6 pupils have been working hard to prepare for the event and are looking forward to leading tours and sharing what makes our school so special. If you know any families looking for a school place, please do spread the word – we'd love to welcome them. We've been keeping our social media channels up to date with snapshots of daily school life – from classroom activities to special events. Please take a look and feel free to share posts with friends and family who may be considering Park Road for their child.

We're once again supporting WA5 Good Neighbours with our Harvest Collection, coordinated by Mrs Wilkinson. Donations of non-perishable food and household items are very welcome and will go directly to local families in need. A full list of suggested items can be found on page 3.

On Friday, Mrs Oakes has arranged for us to support Young Minds, through their 'hello yellow' campaign. Children may wear yellow to school this day—as much or as little as they wish. Teachers will be supporting through their teaching throughout the day as part of our mental health and wellbeing curriculum.

Finally, a huge well done and thank you to the children that represented school at the Warrington running event at the weekend. They were a credit to the school and gave it their all. It was lovely to hear from members of the team how much fun they had. Well done everyone!

Thank you, as always, for your continued support. Have a wonderful weekend; see you Monday at 8:35 am when the gates open. Mrs Quigley

## Picture News

The Picture News topic for next week is ...

**'What can we learn from people who prove others wrong?'**



Ellie Goldstein, a 23-year-old model from Ilford, has been announced as a contestant on Strictly Come Dancing. She is the first person with Down's syndrome to take part in a full series of the show, having already made history as the first model with Down's syndrome to appear on the cover of British Vogue. Ellie says she's excited for the challenge and hopes to show that people can do amazing things, even when others don't expect them to.

Down's syndrome is a condition some people are born with and can affect a person's learning ability or physical features, it is not a disease or illness. People who have Down's syndrome have their own personalities and strengths, just like anybody else. Doctors once told Ellie's parents she might never walk or talk.

Things to talk about at home:

- \* Have you ever seen Strictly Come Dancing on TV? Do you enjoy watching programmes that show competitions? Ask others at home whether they do.
- \* Why do you think Ellie decided to take part? Is it something that you would like to take part in?
- \* Can you remember a time when you were told you couldn't do something eg finish a puzzle or reach the top of a climbing frame? Share how you felt and what happened.

## Hot Chocolate and Cake

Well done to the following children chosen this week for demonstrating good manners and our school values at lunchtime:

Reception	Evelyn T
Year 1	William Q
Year 2	Charlie R
Year 3	Jenna A
Year 4	Willow L
Year 5	Isaac E
Year 6	Leonard B

## Hello Yellow

On Friday 10 October, Park Road will be taking part in Hello Yellow, in recognition of World Mental Health Day. Children can come to school in their own clothes, wearing something yellow - it could be socks, a bobble, a t-shirt with a bit of yellow on. Details of Hello Yellow are below and donations can be made on their website [www.youngminds.org.uk/support-us/fundraising/helloyellow/](http://www.youngminds.org.uk/support-us/fundraising/helloyellow/).

## Message for parents

Dear parents and carers

Our school will be taking part in Hello Yellow on Friday 10 October (World Mental Health Day) to raise awareness and funds for YoungMinds, the UK's leading charity for young people's mental health.

No young person should feel alone with their mental health and that's why Hello Yellow matters. We're taking this opportunity as a school community to come together and show our students that we're with them and they're never alone with their mental health.

We'll be taking part by wearing yellow and doing activities to support Children's mental health on the day.

Most importantly, we want to share the resources which YoungMinds offer to support parents and carers if you ever need help and advice to support your children. This includes:

- online resources ([www.youngminds.org.uk/parent/](http://www.youngminds.org.uk/parent/))
- a phone line, open 9.30am-4pm (0808 802 5544)
- an online chat for parents and carers to speak to trained professionals if you're concerned about your children's mental health ([www.youngminds.org.uk/parents-helpline/](http://www.youngminds.org.uk/parents-helpline/))

#HelloYellow

M&S | YOUNGMINDS

YoungMinds, registered Charity in England (11 01 000) and Scotland (SC031050)

## Harvest Festival Collection

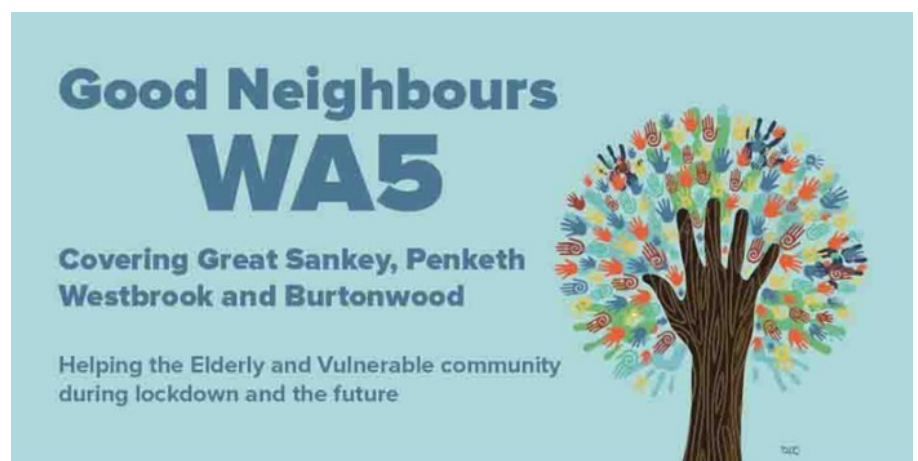
From Monday 6 October, we will be starting our collection of donations for our Harvest Festival. All of the items collected will be donated to our local Foodbank, who will provide hampers to vulnerable adults/families in the WA5 area. With the current economic climate, the demand on the Foodbank is very high so any help you may be able to give would be very much appreciated.

Items such as:

Tinned rice pudding	Custard
Tinned potatoes	Instant potato
Cream crackers	Tinned Fruit
Tinned meats (hot)	Fish/meat paste
Corned beef	Cat food
Angel Delight	Jelly
Long life milk	Selection boxes
Pasta	Tins of biscuits
Chocolates/Sweets	Shortbread
Pasta sauces	Cereal and Oatmeal
Tinned vegetables	Tinned fish
Rice	Tinned puddings
Soup and stew	Christmas food
Nut butters	Baby food and formula
Beans (canned or dry)	

Please **check any “use by” dates** and please bear in mind that the Good Neighbours WA5 need time to sort and distribute the items so food with a longer shelf would be appreciated. They appreciate all donations and particularly healthier options (ie low sodium, whole grains and fruit in 100% juice).

Any donations can be given to the adult on the gates in the morning or placed in the trolley on the playground for those who access it in the mornings and for everyone after school.





# What Parents & Educators Need to Know about EA SPORTS FC 26

AGE RESTRICTION  
PEGI  
3

## WHAT ARE THE RISKS?

Our guide looks at the risks surrounding EA Sports FC 26 and our top tips to minimise them. This marks the third year since EA left the FIFA licence, and the game is mostly unchanged from last year. While Kick-Off mode is great for playing with friends and Career Mode allows players to fulfil long-term ambitions as a manager or player, Ultimate Team remains the main draw for many players – and it can get out of hand in terms of how much money players can invest.

### AN ANNUAL RELEASE SCHEDULE

As was the case with the last two EA Sports FC games and the FIFA series before it, the franchise rolls out once a year with updated squads and new features. This can make it expensive to keep up with, particularly when so many dedicated players are keen to get their hands on the latest edition.

### VOICE CHAT

Voice chat can be enabled across all platforms, meaning young people can speak to anyone they play with or against. While it can be switched off, some children will no doubt want to speak to their friends while they play. This also means they may encounter strangers much older than them, which can expose them to inappropriate language or behaviours.

### IN-GAME PURCHASES THROUGH ULTIMATE TEAM

Ultimate Team is the big draw for EA Sports FC, letting players spend real money on packs that they can open to build a squad of the world's best players. They're not always easy to obtain, and new, improved versions of players will be regularly added as limited-time offerings. Young people could feel pressured into spending money and experience fear of missing out.

### SCAMMERS IN ULTIMATE TEAM

Ultimate Team is managed by EA itself, but that hasn't stopped scammers from looking to dupe players out of money and in-game coins. Some scammers sell their accounts, which is a violation of EA's terms of service, while others will 'sell' coins – something the developer is still working to crack down on. Some try to gain access to others' accounts, potentially giving them access to payment information.

### POTENTIAL FOR ADDICTION

While EA Sports FC is potentially addictive, thanks to its fast-paced gameplay and mirroring of the real-world skill and glamour of football, Ultimate Team's focus on limited-time rewards and the lottery of winning packs can make it feel closer to gambling than gaming, which may lead to addiction and impulsive spending of money.

## Advice for Parents & Educators

### PREPARE FOR ANOTHER GAME IN A YEAR

The annual-release cadence aligns with the return of the school year, and can be a great way to incentivise good behaviour at the start of term. If children are applying themselves and preparing for a new year of school, or were particularly well behaved in the summer, EA Sports FC 26 could make a great reward.

### LIMIT SPENDING

If you're worried about children accidentally spending real money in Ultimate Team, whether in game or on the EA Sports FC companion app, don't link a payment card to their account. Reclaiming funds can be a mountain to climb, and the dopamine hit of opening flashy packs with slick animations means one purchase can lead to another very quickly. It's also worth adding a prepaid card if you'd prefer them to make their own choices with their budget.

### MONITOR VOICE CHAT

As in-game chat is open, be sure to adjust the settings in EA Sports FC 26 to lock it down. If children want to chat with their friends while they play, consider setting up a safe space for them to call, to allow them to play without fear of outsiders.

### BE VIGILANT

As with last year, there are ways to keep scammers at bay. Ensure passwords are locked down, and consider using a password manager application to keep them secure. EA will never contact players through the game itself, so be vigilant with incoming messages, and block and report suspected spam. EA will contact players by email if needed, but they will never ask for usernames or passwords. Players should also avoid buying in-game currency from unofficial websites – doing so can lead to accounts being banned and could cost players money in the process.

### Meet Our Expert

Lloyd Coombes is an experienced freelance writer and has been working in the gaming and tech industry for seven years. A regular visitor to the App Store to try out new tools, he's also a parent and therefore understands the importance of online safety. He's also a tech and fitness writer and has been published at sites including IGN, TechRadar, and plenty more.



#WakeUpWednesday

The National College

Source: See full reference list on guide page at: <https://nationalcollege.com/guides/ea-sports-fc-26>

@wake\_up\_weds

/www.thenationalcollege

@wake.up.wednesday

@wake.up.weds

Users of this guide do so at their own discretion. No liability is entered into. Current as of the date of release: 01.10.2025





Parents, Friends  
Association

### **Pond Works**

Work started last week on the next PFA project - the school pond! Yes, the school has a pond on site, which is an enhancement of the outdoor learning provision and a fantastic addition to the forest school area.



Although it was hoped the work could be completed over one weekend, we have hit a little bit of a muddy patch, which halted works this week - despite my efforts of wading through a very swampy pond! We are hopeful that the remaining work will be completed soon and handed back over to school. As a little insight, we have cleared all vegetation from the surround of the pond, all rotten decking has been uplifted, an above ground pond structure has been built and the gravel installation has started.



We are excited about the completion of this project and look forward to handing it back over to school.

### **"Festive Fundraiser"**

At this time of year, we would usually be sharing news about our Christmas fundraiser featuring festive artwork created by the children. It's always been a lovely tradition, and we're so grateful for the support it's received in the past. Following feedback in previous years and the decline in commissions received, this year we have decided to take a different route.

We're excited about this year's Christmas fundraising efforts! Our PFA Chairperson has kindly organised a festive initiative that brings a bit of seasonal cheer to your home while also supporting our school.

We're inviting families to purchase their Christmas tree through a new scheme, and for every tree sold, £5 will be donated directly to our school's PFA. The trees are supplied by 360 Landscape Supplies Ltd, a local business owned by our Chairperson. This initiative is also being embraced by other local schools who are also raising funds for their pupils. See the next page for more details.

We are hoping this event will be greatly received by all involved and look forward to sharing more information in the coming days. If you have any questions, please feel free to speak to Kelly.

360 LANDSCAPE SUPPLIES LTD  
INVITES YOU TO OUR

# TREE-60 FUNDRAISER

THIS |  | SEASON

FRESH CUT NORDMAN FIR CHRISTMAS  
TREES  
AVAILABLE IN 5FT AND 6FT  
GET YOUR ORDER IN BY 31<sup>ST</sup> OCTOBER 2025

FOR FURTHER INFORMATION,  
SPEAK TO THE PTA

# Festive FUNDRAISER

"Tinsel, Tags & Timely Deliveries!"

The Journey of Your Festive Fundraiser Order

What Happens Next?

After the order deadline on 31st October, all submitted forms will be processed.

We will contact you using the details provided on your form to confirm your order and share next steps.

Tree 60's Opening Weekend kicks off on Friday 28th November with hot chocolate, mulled wine, Christmas stalls and festive fun – families are warmly invited to visit and:

- Choose their perfect tree and take it away the same day,
- OR book a delivery slot for a designated day,
- OR choose a tree and return on a later date to collect.

Delivery days will be every Thursday, Saturday, and Sunday throughout December, right up until Christmas week.

Delivery charges may apply!



## Support Our School PTA – Order Your Christmas Tree Today!

This year, you can buy your beautiful **premium Nordmann Fir Christmas Tree** through our school and help raise funds for the PTA at the same time. For every tree ordered, **£5 goes directly to support our school.**

### Choose Your Tree Size

Tree Size	Price
5ft Nordmann Fir	£55
6ft Nordmann Fir	£65

5ft Nordmann Fir  
Quantity ordered: \_\_\_\_\_  
Total amount due: £ \_\_\_\_\_

6ft Nordmann Fir  
Quantity ordered: \_\_\_\_\_  
Total amount due: £ \_\_\_\_\_

### Delivery/Collection

To be arranged (families will be updated once dates are confirmed).

### Payment details

Bank Transfer: 20-82-13  
23745252

When paying by bank transfer please use last 4 digits of contact number (used below) as your reference, this helps us easily reconcile payments.

Parent/Guardian Name: \_\_\_\_\_

Contact Number: \_\_\_\_\_

Email Address: \_\_\_\_\_

Thank you for supporting our school PTA!

By ordering your Christmas tree through this fundraiser, you're helping us raise vital funds while making your festive season extra special.



## Community Pages

Any items shared on these pages are for information only and are not endorsed or vetted by school.

CODING-ROBOTICS-GAME DESIGN-MINECRAFT & MORE

ComputerXplorers

# October

## HALF TERM TECH CLUB

### WARRINGTON

**Culcheth High School**  
Warrington Road, WA3 5HH

27th-28th October

9am-3pm

Childcare Voucher, Tax Free Childcare and UC Childcare payments now available.

Join us to embark on a fun-filled journey into the world of coding, gaming, and creativity!  
This special program is designed to ignite your child's passion for tech and foster their problem-solving skills, all while having a blast during the school break!

**BOOK!** Visit the link or scan the code-  
[computerxplorers.co.uk/bolton-wigan/book](https://computerxplorers.co.uk/bolton-wigan/book)  
Questions? Email us- [bolton@computerxplorers.co.uk](mailto:bolton@computerxplorers.co.uk)

NEW  
Childcare Voucher payments now available