



PARK ROAD

COMMUNITY PRIMARY SCHOOL



WEEKLY UPDATE

9 September
2022



Next Week at a Glance

Sunday 11	Monday 12	Tuesday 13	Wednesday 14	Thursday 15	Friday 16
* 4.00 pm Clubs bookings live in Parentpay, see details on page 6	* Dinner Menu week 3	*	*	*	* Foodbank Friday Collection * Non-Uniform Day in exchange for chocolate for Chingo (see page 5 for details)

Value of the half term:

INCLUSIVE

Welcome and Welcome Back

We would like to warmly welcome everyone to our new school year! We have been very impressed by the way the children have returned to school after the holidays.

Our Reception class have also settled in very well and we hope they have enjoyed their first few days in school.

This week's update, the first of the year, is quite lengthy as we would like to update you on a number of things. We will be sending home a copy of the newsletter to our new Reception class families this week only but in future, the update will be sent out on Seesaw (it will also be available on our website).

As you are aware, Seesaw is the main communication tool for our school and it is important that you have access to ensure you have the most up to date information. There are two accounts for Seesaw:

⇒ a parent account where we will send out

⇒ newsletters, general news and important updates for you and you will be able to send messages directly to the school office or your class teacher

⇒ a student account used for your child to complete home learning or homework.

If you don't have access to either of these, please let us know and we will send you the enrolment details. Our new email address is office@parkroadprimary.co.uk.

Dates for the Diary

The 'Dates for the Diary' will be sent out in your children's bookbags early next week. It will show the key dates for the coming year to allow you time to arrange time off work for events. The dates may be subject to change, but only in exceptional circumstances and we will give you as much notice as possible.

There will be reminders of the key events in our Weekly Update in the next week at a glance (see above) as well as any changes that may happen.

Picture News

Next week's Picture News topic is

'Who was Queen Elizabeth II?'



The background of the story is that the Queen has died peacefully, aged 96, marking an end to her historic reign. Buckingham Palace yesterday confirmed the news. Her Majesty Elizabeth II is the longest serving monarch in British history. Her son, now King Charles III, said the death of his beloved mother was a "moment of great sadness" for him and his family and that her loss would be "deeply felt" around the world.

Things to talk about at home:

- * What are your memories of the Queen, did you ever meet her?
- * The Queen declared to be devoted to our service and the service of the great imperial family to which we all belong. What do you think she meant by this?
- * How do you think members of her family are feeling?

Road Safety

Please could we ask that if at all possible, you avoid driving and parking on the stretch of Wroxham Road in front of school. This area becomes very congested and it makes it difficult for children and families crossing the road. The most important rule to remember when driving around schools is to slow down. During the school run, the roads are busy with children making their way to school. Children don't have great road sense and you should always be aware that they might run out in front of your vehicle at any given moment, so the slower you're travelling the easier it will be to react. Don't forget to give extra space to children on bikes and scooters.

There is ample parking at either entrance of the Tim Parry Park next to school, which is only a short walk away (the school car park is for staff only).

Class Parent Reps

Please see below the names of your Class Parent Representative and their contact details. The Class Reps are invited to a meeting every half term to discuss new ideas or any suggestions or concerns that parents may have. The Reps will send out a message to the class before the Parents Forum, will attend the meeting and then feedback to the class parents/carers. If you haven't already done so, please can you send an email to the relevant address below so that the Class Rep has your contact details and can keep you updated.

We currently don't have a Class Representative for Reception class or Year 1 so if you do have any suggestions or queries, please email or send a Seesaw message to the school office directly. If [you would be interested in taking on this role in Reception or Year 1](#), please let us know via Seesaw or by emailing office@parkroadprimary.co.uk.

Year 2: Mr Broadhurst
intake2020@parkroad.warrington.sch.uk
Year 3: Mrs Wainwright
intake2019@parkroad.warrington.sch.uk
Year 4: Mrs Pendlington
intake2018@parkroad.warrington.sch.uk
Year 5: Mrs Thomas
intake2017@parkroad.warrington.sch.uk
Year 6: Mrs Walker-Wiggans
intake2016@parkroad.warrington.sch.uk

If you have a specific query (rather than a general school/class query), please do remember to contact school directly.

Harvest Festival Collection

From Monday, we will be collecting donations for our Harvest Festival from Monday to Thursday (Fridays will still be the ongoing collection for the Warrington Foodbank) and we intend to donate the items to our local Foodbank, who will provide hampers to vulnerable adults/families in the WA5 area. With the current economic climate, the demand on the Foodbank is very high so any help you may be able to give would be very much appreciated.

Items such as:

Tinned rice pudding	Custard
Tinned potatoes	Instant potato
Cream crackers	Tinned Fruit
Tinned meats (hot)	Fish/meat paste
Corned beef	Cat food
Angel Delight	Jelly
Long life milk	Selection boxes
Pasta	Tins of biscuits
Chocolates Sweets	Shortbread
Pasta sauces	Cereal
Tinned vegetables	Tinned fish
Rice	Tinned puddings
Soup	Christmas food

Please remember to **check the “use by” dates** and only send in food with longer shelf-lives as the Foodbank need time to sort and distribute the items.

Families Cheshire Magazine

Their 'Back to School' issue contains some useful information for parents including:

- What's On in September & October for Families in Cheshire
- First chapter books for early readers
- Understanding phonics
- Mastering times tables
- What to do if you child 'hates' school
- Helping your child with panic attacks

The magazine can be reached at

<https://issuu.com/familiesonline/docs/familiescheshireseptemberoctober22print>

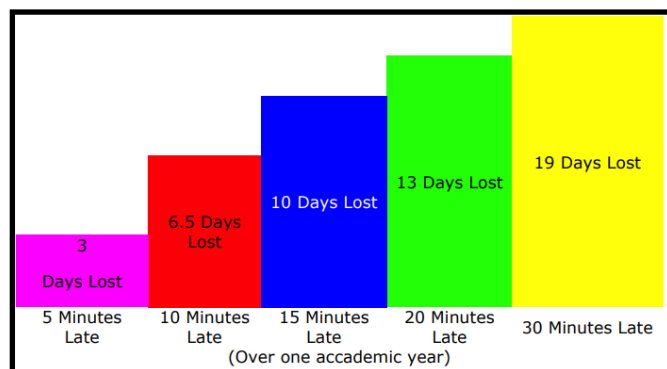
Attendance

Regular attendance at school is important for both your child's education and for settling into school. The beginning of a school term or year is particularly an important time for children to settle in to their class and understand any new routines or topics. It is also a time where children may make new friends or re-establish their previous friendship groups. Sometimes young children may find it difficult to get back into their friendship groups after a break so consistent attendance can help to minimise this.

The school year has 190 days for pupils to attend a year and each day that is missed unnecessarily has an impact on their education. Please remember that there are 175 days per year when your child does not have to attend school so please plan any routine appointments etc for during this time. The 175 days can be used to:

- * Attend routine appointments eg dentist
- * Spend time together
- * Go on family visits
- * Visit friends and family
- * Go on holiday
- * Go shopping
- * Go on days out

It is not only the number of days that your child is in school that matters but **Every Minute Counts**: If you arrive late to school everyday, your child's learning begins to suffer. This graph shows how being late to school everyday over a school year adds up to lost learning time. Arriving on time allows your child to settle into the school day along with their classmates.



We know how busy everyone is over the summer and thought the following reminders might be useful:

Dinners and Snacks

Please remember to keep your Parentpay accounts topped up if your child has snacks or if your child is in KS2 and has a meal from the school kitchen.

Meals and snacks should be paid for when they are taken—school cannot afford to offer credit.

If you do forget to top up, we will send you a reminder through Seesaw. If you do receive a reminder, please do top up straight away or reply to let us know if there are any problems. Thank you.

Data Collection Sheets

We will be sending out our data collection sheets for you to check. These sheets are **extremely important should we need to contact you in case of an emergency**. Please check all of your child's and your details and notify us of any changes. Ideally please update or confirm that the details are correct through the Sims Parent App Lite. If you are unable to access the app, please correct the details or confirm that nothing has changed on the sheet, sign it and return it to school

Permission to Pick Up

If you want to make any changes to the people that you have given permission to be able to pick up your child to school, please email the school office, office@parkroadprimary.co.uk, with your child's name, year and the changes you would like to make.

Chicken/Guinea Pig Rota

We will shortly be sending out a request for help to care for our Chickens and Guinea Pigs over the weekends and holidays. If you are available at all and willing to check on, feed and water our animals, let out the chickens and possibly clean them out, please keep an eye out in your child's bookbag for the form and return it to school with your availability and details. Full training will be given!

Remember Packed Lunch Cutlery!

If your child has a packed lunch, please do remember to send any cutlery that they may need eg spoon for yoghurts or fork for salad, the kitchen has limited stocks of cutlery for children taking a school meal.

Absence Reporting

Please remember to let the school office know **by 9.15 am** if your child is going to be absent for any reason. There are many ways to let us know: via option 1 on our telephone line 01925 723 550, via our website, via Seesaw or via the school email (office@parkroadprimary.co.uk). The office emails are constantly monitored whereas a specific teacher may be off or unable to access their account during teaching time. Thank you.

Labelling Clothing

Each year, we have large amounts of lost property that we are unable to return to children because they are not labelled with the child's name. Please help us to return items to your children by clearly naming them - it is even more important with the increase in living expenses that we can do this.

Dropping Off/Picking Up

Please could we ask that you do not walk through the staff car park and that you access school using the pedestrian routes. During Covid it was necessary to use the car park for our one way system but for safety for both pedestrians and vehicles, please use the paths. Thank you.

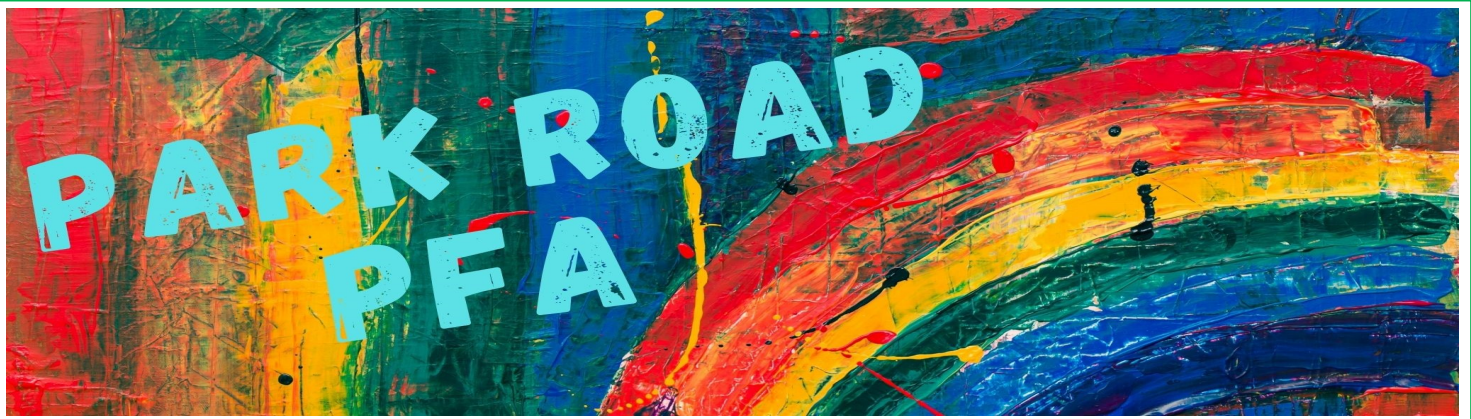
Sickness Guidelines

Please remember that, following the advice of Public Health England, we ask that children are kept off school for 48 hours after the last instance of sickness/diarrhoea.

We ask this for two reasons: firstly, it will prevent the spread of the illness throughout the local community and secondly, to allow your child time to fully get back on their feet.

We do understand that children want to return to school and don't want to miss out but it can set them back, particularly if they are not yet eating properly or returned to full health.

We appreciate your help in reducing the spread of these viruses and please remember to contact the school office to notify of absences (not the teachers).



Help Needed - Please Read

Currently, there are only 2 active members of the PFA and the events that we run rely on the help we receive from our PFA members and our community. With so few members, we need to make sure we have enough volunteers to run events and we are very excited to introduce a new way for volunteers to register their help. For each event, we will create a volunteer sign up so you can see exactly what you are signing up for - there will be tasks with specific timings. If you would be interested in joining the PFA to help in any way you are able and as much or as little as you can, please email kellyhpfa@gmail.com for further details or come along to our AGM (details below).

Non Uniform Day Friday 16 September

The PFA are holding a non-uniform day on Friday 16 September [in exchange for](#) a donation of chocolate, which will be used for prizes at the Welcome Chingo. The PFA will be collecting the donations on the playground in the morning, as always, if you do not wish to take part by sending chocolate into school, your child can come to school dressed in their uniform.

Welcome Chingo

Please see the details of our popular 'Welcome Chingo' on the panel to the right.

Volunteer opportunities for "PARK ROAD PFA WELCOME CHINGO" are now open. Please click on the following web link (or copy it into your web browser if clicking doesn't work) to go to the signup sheet: volunteersignup.org/CMQBP. To sign up, just follow the instructions on the page. It only takes a few seconds to do. Thank you for volunteering!

AGM

The PFA's AGM will be held on **Tuesday 27 September at 7.30 pm**. Everyone is welcome and we need as many parents, carers and supporters as possible for us to be quorate (to have enough people to legally vote on business) and to continue to fundraise. Further details will be in future weekly updates but please do pencil this date into your diaries - we need your support to carry on!



What you need to know...

Chingo is our extremely loved family fun game of bingo where all the prizes are CHOCOLATE.

- ENTRY TICKETS ARE 50P EACH. EVERY ATTENDING PERSON REQUIRES A TICKET (THIS IS SO WE CAN MONITOR THE PERSON CAPACITY FOR SAFETY REASONS)
- DOORS OPEN AT 5PM
- BINGO TICKET SALES AND REFRESHMENTS ARE ON SALE FROM 5PM UNTILL 5:15PM
- BINGO TICKETS ARE £1 for 1 book of 6 games or £5 for 6 books of 6 games.
- CHOCOLATE RAFFLE £1 PER STRIP.
- GAMES PRIZES- 1 LINE AND FULL HOUSE.
- THERE WILL BE A 15 MINUTE INTERVAL AFTER 3 GAMES HAVE BEEN COMPLETED.
- RAFFLE TO BE DRAWN ON THE NIGHT AND IF NO WINNER COMES FORWARD A NEW TICKET WILL BE CHOSEN.
- WE WILL HAVE A SELECTION OF "FREEFROM" PRIZES AVAILABLE SHOULD THE WINNER HAVE ANY ALLERGIES
- REFRESHMENTS TO BE SERVED DURING THE INTERVAL

Entry tickets will go on sale in the coming days- more information on how to purchase will follow.

Card payments accepted on the night with a minimum charge of

£5

After School Clubs

Details of the After School clubs on offer for this half term can be found below. All of the clubs (including Choir) will be available to book via Parentpay at 4 pm on Sunday (Sunday 11 September). It may take a couple of minutes for them all to appear so please be patient. All clubs will begin week commencing 19 September 2022.

We will rotate the clubs/classes next half term - please watch the Weekly Update later this half term for more information. Please note that we do not offer clubs in the Autumn term for Reception class while they are still setting in and their clubs will begin after Christmas.

The charge for 4 sessions is £2.00 per child per club. Please only sign up if you can attend each week. There will be no refunds if your child is unable to attend a session. Football and cricket clubs will be outside unless the weather is bad.

***** PLEASE MAKE SURE YOU ADD AN EMERGENCY CONTACT IN THE NOTES FIELD ON PARENTPAY FOR DURING THE CLUB AND WHO WILL BE PICKING UP YOUR CHILD AS WITHOUT THIS THEY WILL NOT BE ABLE TO STAY AT THE CLUB *****

Day	Clubs	Years	Time	Dates
Tuesday	Performing Arts	1, 2, 3	3.15 - 4.15 pm	20/9 - 11/10
	Quick Cricket	3, 4, 5, 6	3.15 - 4.15 pm	20/9 - 11/10
Wednesday	Mixed Football	1 and 2	3.15 - 4.15 pm	21/9 - 12/10
	Choir	4, 5, 6	3.15 - 4.15 pm	21/9 - ongoing
Thursday	KS2 Football for Boys	3, 4, 5, 6	3.15 - 4.15 pm	22/9 - 13/10
	Yoga	1 and 2	3.15 - 4.15 pm	22/9 - 13/10
	Crochet	5 and 6	3.15 - 4.15 pm	22/9 - 13/10
Friday	Football for Girls	3, 4, 5, 6	3.15 - 4.15 pm	23/9 - 14/10





FREE FAMILY EVENT Celebrating the life of OLD BILLY

The longest living horse on record (1760-1822)

This record-holding working horse was born, worked and died, aged 62, in Warrington. The comical tale of Old Billy is a rare example of the recorded history of an animal's contribution to industrial life.

This year marks the 200th Anniversary of his death and to mark the occasion we are holding a special celebration on Sunday 11th September.

Come and join us in Victoria Park between 11am and 4pm for a fun-filled day:

- Guests from Manchester Museum (home of Old Billy's skull) and Warrington Museum & Art Gallery will be giving us the facts about Old Billy through pictures and artefacts - did he really live to that age???
- See Old Billy's hilarious antics brought to life by local performers and storytellers.
- Take part in arts, crafts and games to celebrate Old Billy's life.
- Have your face painted like Old Billy or another famous animal.
- Ice cream, food and drink will be available to buy.



#HODs



www.heritageopendays.org.uk