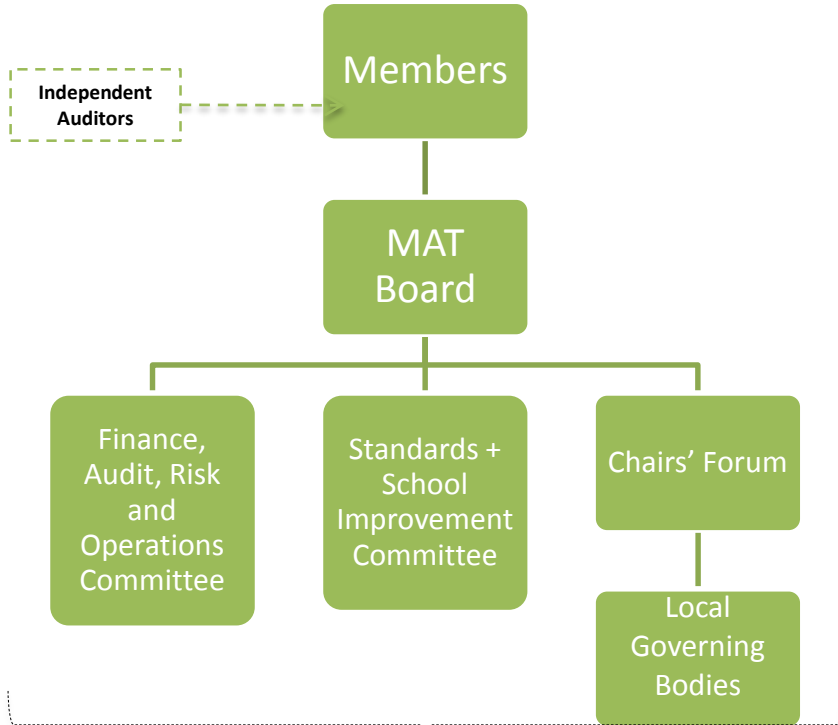
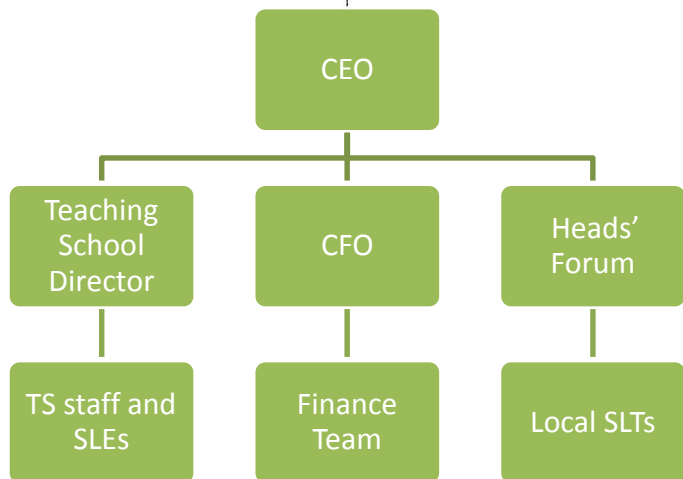


Omega MAT Trust Governance and Leadership Structure

GOVERNANCE



LEADERSHIP



Members	<ul style="list-style-type: none"> • Attendees: 6 Members (Chair has the casting vote) • Exec Team Attending: CEO • Meets: Twice annually • Focus: Performance of MAT Governance, risk and compliance.
MAT Board	<ul style="list-style-type: none"> • Chair: NLG Attendees: 9 Trustees • Exec Team Attending: CEO and CFO • Meets: Termly • Focus: Champions the MAT, holds its purpose, sets its strategy, and appoints and holds to account the CEO/CFO.
Finance, Audit, Risk and Operations Committee	<ul style="list-style-type: none"> • Chair: Trustee Attendees: 2 additional trustees, not inc CEO • Exec Team Attending: CEO, CFO and HTs • Meets: Termly • Focus: Financial management, Audit and Risk, holds the CFO to account. MAT operations (HR, IT, Facilities etc.), holds the COO to account. • Schools representation: HTs attend to advise, without voting rights.
Standards and School Improvement Committee	<ul style="list-style-type: none"> • Chair: Trustee Attendees: Chairs of local governing bodies • Exec Team Attending: CEO, TS Director • Meets: Termly • Focus: Supports the continuous improvement of standards within primary/secondary MAT schools. Champions the Teaching School, holds its purpose, sets its strategy and hold the Teaching School Director to account. • Schools representation: HTs attend to advise, without voting rights.
Chairs' Forum	<ul style="list-style-type: none"> • Chair: MAT Chair/Trustee Attendees: Chairs of local governing bodies • Exec Team Attending: CEO • Meets: Termly • Focus: all matters, feeding Committee agendas
Local Governing Body	<ul style="list-style-type: none"> • Chair: Local Chair Attendees: Community leaders, staff, parents • Exec Team Attending: Headteacher & Leadership Team • Meets: Termly • Focus: Supports the continuous improvement of standards within an individual school within the MAT and relationships with local community.

Chief Executive Officer	<ul style="list-style-type: none"> • Organisational leadership • Strategy • Management of the CFO
Chief Finance Officer	<ul style="list-style-type: none"> • Finance – including procurement, audit, risk management and payroll • Operations – including HR, IT, legal and facilities
Teaching School Director	<ul style="list-style-type: none"> • Initial Teacher Training/School Direct • Continuous professional development: L/ship development; R+D, T+L • School to school support: SLE deployment
Headteachers	<ul style="list-style-type: none"> • Operational leadership of individual school • Supporting other headteachers within the MAT