

# Year 11 (2018 V1)

32 students

9
8
7
6
5
4
3
2
1

## Park Campus Academy

06 September 2018

(2018) KS4 Progress 5 Examination Analysis

Version: 2.1

A8 Points: 2017

# PLT - Park Campus Academy

## Summer (2018)

### Progress 5 Examination Analysis

<b>Page 1</b>	<b>Park Campus Academy - Front</b>
<b>Page 2</b>	<b>Page INDEX</b>
<b>Page 3</b>	<b>(1-9) and Progress 5 Headlines</b>
<b>Page 4</b>	<b>(1-9) Headlines</b>
<b>Page 5</b>	<b>(2-9) Headlines</b>
<b>Page 6</b>	<b>(3-9) Headlines</b>
<b>Page 7</b>	<b>(4-9) Headlines</b>
<b>Page 8</b>	<b>GCSE English Graph</b>
<b>Page 9</b>	<b>GCSE Mathematics Graph</b>
<b>Page 10</b>	<b>GCSE Biology Graph</b>
<b>Page 11</b>	<b>GCSE Statistics Graph</b>
<b>Page 12</b>	<b>GCSE Equality and Diversity Graph</b>
<b>Page 13</b>	<b>GCSE Nutrition and Health Graph</b>
<b>Page 14</b>	<b>ICT (ECDL) Graph</b>
<b>Page 15</b>	<b>Functional Skills Analysis</b>

# PLT Park Campus Academy

KS4, attainment, thresholds by pupil characteristics		5/5+ (1-9) with EM	5/5+ (2-9) with EM	5/5+ (3-9) with EM	5/5+ (4-9) with EM	5/5+ (5-9) with EM	Progress 5								
							Cohort	P5	Total Cohort Attainment 5 P5						
All	32	17	53.1%	9	28.1%	3	9.4%	1	3.1%	0	0.0%	29	-1.23	32	18.89
Male	25	14	56.0%	7	28.0%	2	8.0%					23	-1.12	25	18.68
Female	7	3	42.9%	2	28.6%	1	14.3%					6	-1.64	7	19.64
SEN DK	10	4	40.0%	1	10.0%	1	10.0%					10	-0.93	10	19.40
SEN DE	2	0	0.0%									2	-2.53	2	9.00
KS2 Higher	2	1	50.0%	1	50.0%	1	50.0%	1	50.0%			2	-2.23	2	28.25
KS2 Middle	25	14	56.0%	7	28.0%	2	8.0%					25	-1.23	25	18.76
KS2 Lower	2	1	50.0%									2	-0.19	2	13.25
No KS2	3	1	33.3%	1	33.3%									3	17.50
Pupil Premium	20	11	55.0%	5	25.0%	2	10.0%	1	5.0%			20	-1.59	20	17.70
Non Pupil Premium	11	6	54.5%	4	36.4%	1	9.1%					9	-0.42	11	21.86
First Language - Other	3	2	66.7%	2	66.7%							3	-0.38	3	22.00
First Language - English	29	15	51.7%	7	24.1%	3	10.3%	1	3.4%			26	-1.33	29	18.57
Year 7 Start	0	0										0			
Year 8 Start	4	1	25.0%	1	25.0%	1	25.0%					4	-1.26	4	13.88
Year 9 Start	6	2	33.3%									6	-1.30	6	15.83
Year 10 Autumn Start	6	4	66.7%	1	16.7%	1	16.7%					6	-1.10	6	21.42
Year 10 Spring Start	1	1	100.0%	1	100.0%	1	100.0%	1	100.0%			1	-1.57	1	34.00
Year 10 Summer Start	5	2	40.0%	1	20.0%							5	-1.57	5	17.60
Year 11 Autumn Start	9	6	66.7%	4	44.4%							7	-0.97	9	19.50
Year 11 Spring Start	1	1	100.0%	1	100.0%							0		1	28.00

Year 11 (2018 V1)

PLT Park Campus Academy

(1-9) Analysis by pupil characteristics		1/1+ (1-9)	2/2+ (1-9)	3/3+ (1-9)	4/4+ (1-9)	5/5+ (1-9)	Total Attainment 5 Pts
All	32	32 100.0%	29 90.6%	28 87.5%	21 65.6%	18 56.3%	18.89
Male	25	25 100.0%	23 92.0%	22 88.0%	16 64.0%	15 60.0%	18.68
Female	7	7 100.0%	6 85.7%	6 85.7%	5 71.4%	3 42.9%	19.64
SENDK	10	10 100.0%	9 90.0%	9 90.0%	7 70.0%	5 50.0%	19.40
SENDE	2	2 100.0%	2 100.0%	1 50.0%			9.00
KS2 Higher	2	2 100.0%	2 100.0%	2 100.0%	2 100.0%	1 50.0%	28.25
KS2 Middle	25	25 100.0%	23 92.0%	22 88.0%	17 68.0%	15 60.0%	18.76
KS2 Lower	2	2 100.0%	1 50.0%	1 50.0%	1 50.0%	1 50.0%	13.25
No KS2	3	2 100.0%	3 100.0%	3 100.0%	1 33.3%	1 33.3%	17.50
Pupil Premium	20	20 100.0%	17 85.0%	16 80.0%	14 70.0%	11 55.0%	17.70
Non Pupil Premium	11	20 100.0%	11 100.0%	11 100.0%	7 63.6%	7 63.6%	21.86
First Language - Other	3	3 100.0%	3 100.0%	3 100.0%	2 66.7%	2 66.7%	22.00
First Language - English	29	29 100.0%	26 89.7%	25 86.2%	19 65.5%	16 55.2%	18.57
Year 7 Start	0	0					
Year 8 Start	4	4 100.0%	3 75.0%	3 75.0%	1 25.0%	1 25.0%	13.88
Year 9 Start	6	6 100.0%	5 83.3%	4 66.7%	4 66.7%	3 50.0%	15.83
Year 10 Autumn Start	6	6 100.0%	5 83.3%	5 83.3%	5 83.3%	4 66.7%	21.42
Year 10 Spring Start	1	1 100.0%	1 100.0%	1 100.0%	1 100.0%	1 100.0%	34.00
Year 10 Summer Start	5	5 100.0%	5 100.0%	5 100.0%	3 60.0%	2 40.0%	17.60
Year 11 Autumn Start	9	9 100.0%	9 100.0%	9 100.0%	6 66.7%	6 66.7%	19.50
Year 11 Spring Start	1	1 100.0%	1 100.0%	1 100.0%	1 100.0%	1 100.0%	28.00

PLT Park Campus Academy

(2-9) Analysis by pupil characteristics		1/1+ (2-9)	2/2+ (2-9)	3/3+ (2-9)	4/4+ (2-9)	5/5+ (2-9)	Total Attainment 5 Pts
All	32	29 90.6%	29 90.6%	20 62.5%	16 50.0%	13 40.6%	18.89
Male	25	23 92.0%	23 92.0%	14 56.0%	11 44.0%	11 44.0%	18.68
Female	7	6 85.7%	6 85.7%	6 85.7%	4 57.1%	2 28.6%	19.64
SENDK	10	9 90.0%	9 90.0%	8 80.0%	5 50.0%	3 30.0%	19.40
SENDE	2	2 100.0%	2 100.0%				9.00
KS2 Higher	2	2 100.0%	2 100.0%	2 100.0%	2 100.0%	1 50.0%	28.25
KS2 Middle	25	23 92.0%	23 92.0%	15 60.0%	12 48.0%	10 40.0%	18.76
KS2 Lower	2	1 50.0%	1 50.0%	1 50.0%	1 50.0%	1 50.0%	13.25
No KS2	3	2 100.0%	3 100.0%	2 66.7%	1 33.3%	1 33.3%	17.50
Pupil Premium	20	17 85.0%	17 85.0%	11 55.0%	9 45.0%	7 35.0%	17.70
Non Pupil Premium	11	17 100.0%	11 100.0%	9 81.8%	7 63.6%	6 54.5%	21.86
First Language - Other	3	3 100.0%	3 100.0%	3 100.0%	2 66.7%	2 66.7%	22.00
First Language - English	29	26 89.7%	26 89.7%	17 58.6%	14 48.3%	11 37.9%	18.57
Year 7 Start	0	0					
Year 8 Start	4	3 75.0%	3 75.0%	2 50.0%	1 25.0%	1 25.0%	13.88
Year 9 Start	6	5 83.3%	5 83.3%	3 50.0%	3 50.0%	1 16.7%	15.83
Year 10 Autumn Start	6	5 83.3%	5 83.3%	5 83.3%	4 66.7%	3 50.0%	21.42
Year 10 Spring Start	1	1 100.0%	1 100.0%	1 100.0%	1 100.0%	1 100.0%	34.00
Year 10 Summer Start	5	5 100.0%	5 100.0%	2 40.0%	1 20.0%	1 20.0%	17.60
Year 11 Autumn Start	9	9 100.0%	9 100.0%	6 66.7%	5 55.6%	5 55.6%	19.50
Year 11 Spring Start	1	1 100.0%	1 100.0%	1 100.0%	1 100.0%	1 100.0%	28.00

Year 11 (2018 V1)

# PLT Park Campus Academy

(3-9) Analysis by pupil characteristics		1/1+ (3-9)	2/2+ (3-9)	3/3+ (3-9)	4/4+ (3-9)	5/5+ (3-9)	Total Attainment 5 Pts
All	32	29 90.6%	22 68.8%	14 43.8%	12 37.5%	5 15.6%	18.89
Male	25	23 92.0%	17 68.0%	11 44.0%	9 36.0%	3 12.0%	18.68
Female	7	6 85.7%	5 71.4%	3 42.9%	3 42.9%	2 28.6%	19.64
SENDK	10	9 90.0%	9 90.0%	4 40.0%	3 30.0%	2 20.0%	19.40
SENDE	2	2 100.0%					9.00
KS2 Higher	2	2 100.0%	2 100.0%	1 50.0%	1 50.0%	1 50.0%	28.25
KS2 Middle	25	23 92.0%	18 72.0%	11 44.0%	9 36.0%	4 16.0%	18.76
KS2 Lower	2	1 50.0%	1 50.0%	1 50.0%	1 50.0%		13.25
No KS2	3	2 100.0%	1 33.3%	1 33.3%	1 33.3%		17.50
Pupil Premium	20	17 85.0%	12 60.0%	7 35.0%	7 35.0%	4 20.0%	17.70
Non Pupil Premium	11	17 100.0%	10 90.9%	7 63.6%	5 45.5%	1 9.1%	21.86
First Language - Other	3	3 100.0%	3 100.0%	2 66.7%	1 33.3%		22.00
First Language - English	29	26 89.7%	19 65.5%	12 41.4%	11 37.9%	5 17.2%	18.57
Year 7 Start	0	0					
Year 8 Start	4	3 75.0%	2 50.0%	1 25.0%	1 25.0%	1 25.0%	13.88
Year 9 Start	6	5 83.3%	3 50.0%	2 33.3%	1 16.7%		15.83
Year 10 Autumn Start	6	5 83.3%	5 83.3%	4 66.7%	4 66.7%	2 33.3%	21.42
Year 10 Spring Start	1	1 100.0%	1 100.0%	1 100.0%	1 100.0%	1 100.0%	34.00
Year 10 Summer Start	5	5 100.0%	4 80.0%	1 20.0%	1 20.0%		17.60
Year 11 Autumn Start	9	9 100.0%	6 66.7%	4 44.4%	3 33.3%	1 11.1%	19.50
Year 11 Spring Start	1	1 100.0%	1 100.0%	1 100.0%	1 100.0%		28.00

# PLT Park Campus Academy

(4-9) Analysis by pupil characteristics		1/1+ (4-9)	2/2+ (4-9)	3/3+ (4-9)	4/4+ (4-9)	5/5+ (4-9)	Total Attainment 5 Pts
All	32	26 81.3%	19 59.4%	14 43.8%	7 21.9%	2 6.3%	18.89
Male	25	20 80.0%	14 56.0%	11 44.0%	5 20.0%	1 4.0%	18.68
Female	25	6 85.7%	5 71.4%	3 42.9%	2 28.6%	1 14.3%	19.64
SENDK	10	9 90.0%	8 80.0%	4 40.0%	2 20.0%	1 10.0%	19.40
SENDE	2	1 50.0%					9.00
KS2 Higher	2	2 100.0%	2 100.0%	1 50.0%	1 50.0%	1 50.0%	28.25
KS2 Middle	25	21 84.0%	15 60.0%	11 44.0%	5 20.0%	1 4.0%	18.76
KS2 Lower	2	1 50.0%	1 50.0%	1 50.0%	1 50.0%		13.25
No KS2	3	2 66.7%	1 33.3%	1 33.3%			17.50
Pupil Premium	20	15 75.0%	11 55.0%	7 35.0%	4 20.0%	1 5.0%	17.70
Non Pupil Premium	11	11 100.0%	8 72.7%	7 63.6%	3 27.3%	1 9.1%	21.86
First Language - Other	3	3 100.0%	3 100.0%	2 66.7%			22.00
First Language - English	29	23 79.3%	16 55.2%	12 41.4%	7 24.1%	2 6.9%	18.57
Year 7 Start	0	0					
Year 8 Start	4	2 50.0%	2 50.0%	1 25.0%			13.88
Year 9 Start	6	5 83.3%	3 50.0%	2 33.3%	1 16.7%		15.83
Year 10 Autumn Start	6	5 83.3%	5 83.3%	4 66.7%	3 50.0%	1 16.7%	21.42
Year 10 Spring Start	1	1 100.0%	1 100.0%	1 100.0%	1 100.0%	1 100.0%	34.00
Year 10 Summer Start	5	4 80.0%	3 60.0%	1 20.0%	1 20.0%		17.60
Year 11 Autumn Start	9	8 88.9%	4 44.4%	4 44.4%	1 11.1%		19.50
Year 11 Spring Start	1	1 100.0%	1 100.0%	1 100.0%			28.00

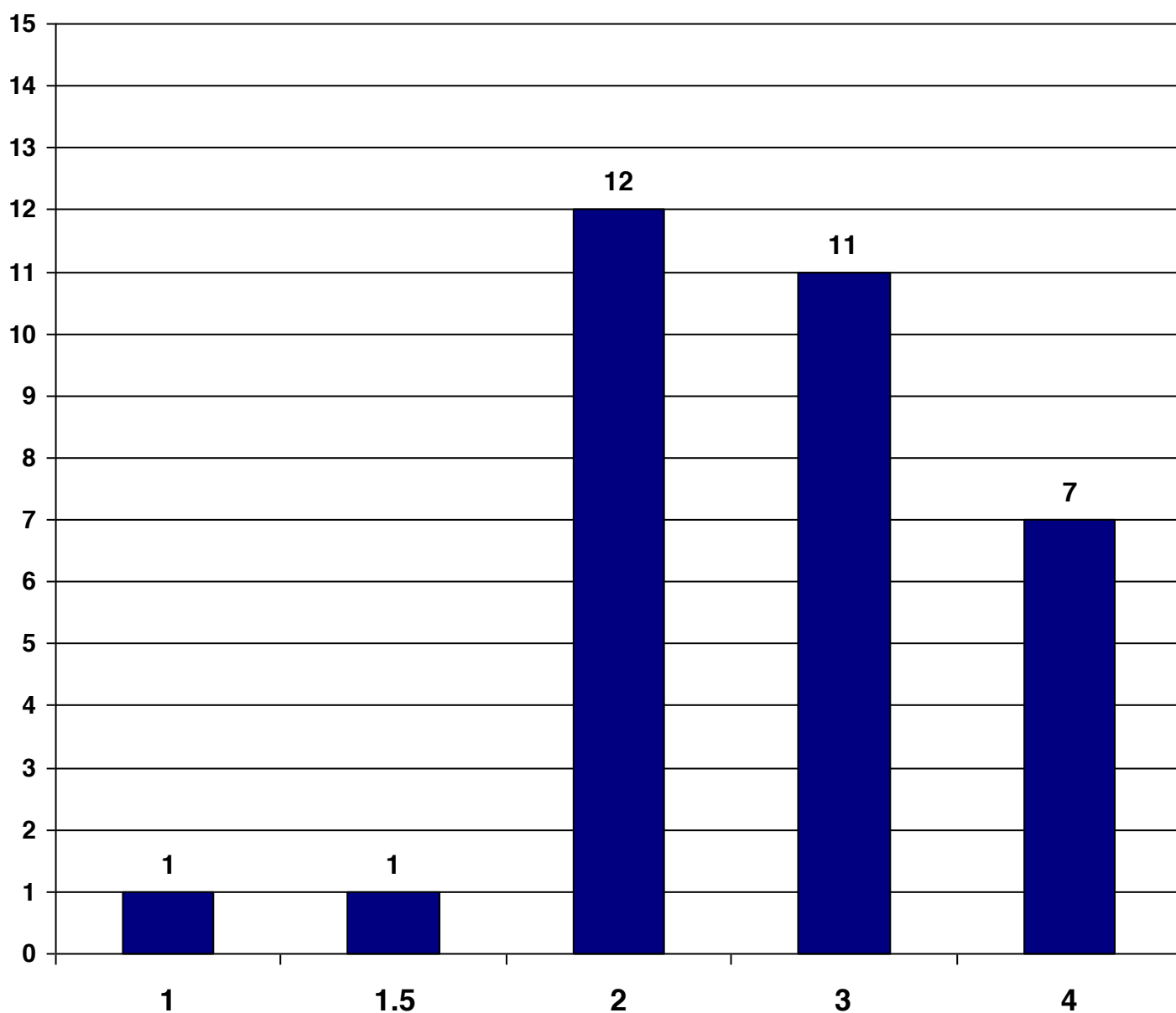
# GCSE English Language



## English Language

A\* A B C D E F G Entries: 32

APS	9-4	9-1	8	7	5.5	4	3	2	1.5	1	U/N/X
2.7	21.9%	100.0%	0.0%	0.0%	0.0%	21.9%	34.4%	37.5%	3.1%	3.1%	0.0%
			0	0	0	7	11	12	1	1	0

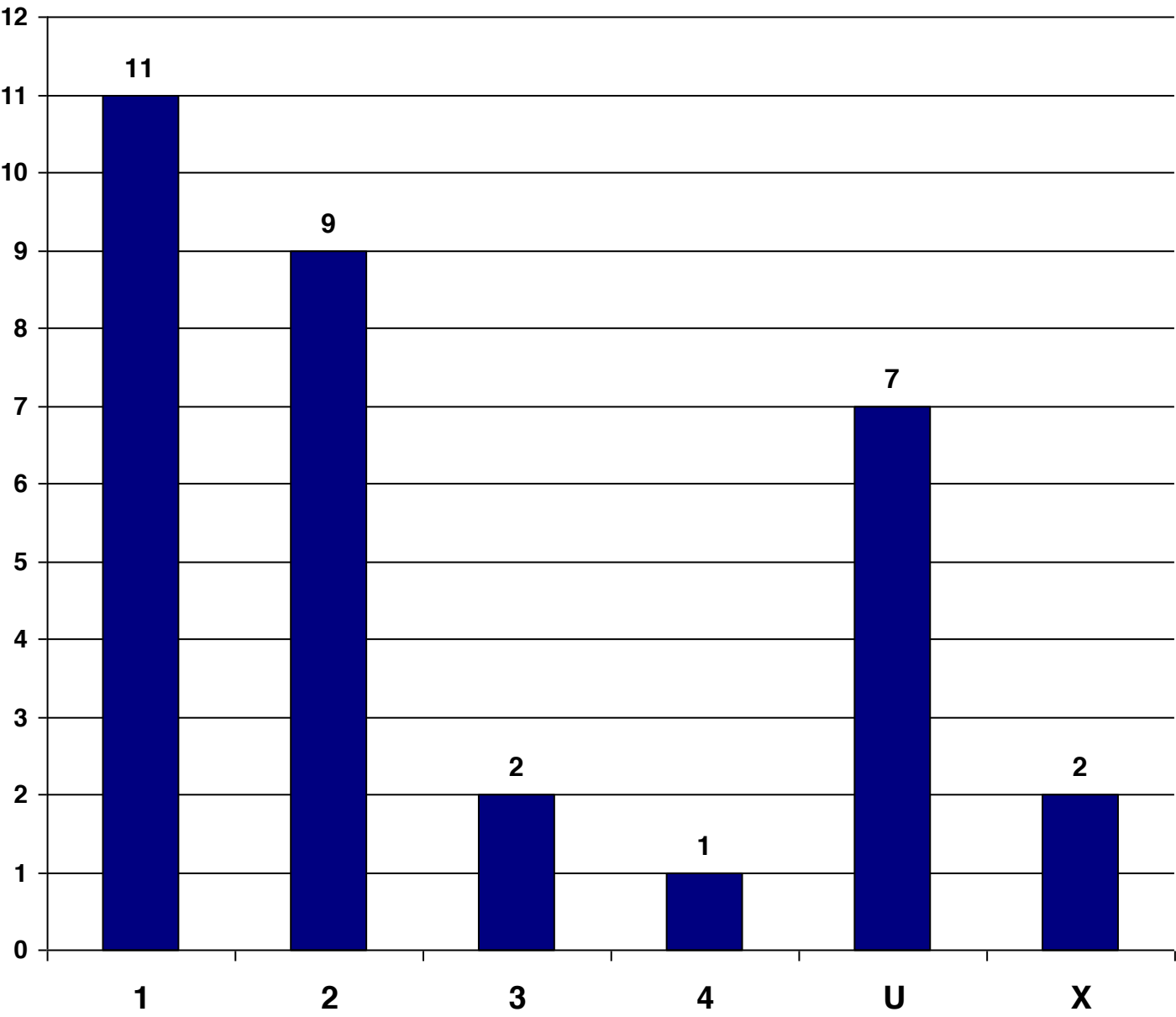




# GCSE Mathematics



Mathematics													Entries: 32
APS	9-5	9-4	9-1	9	8	7	6	5	4	3	2	1	U/N/X
1.2	0.0%	3.1%	71.9%	0.0%	0.0%	0.0%	0.0%	0.0%	3.1%	6.3%	28.1%	34.4%	28.1%
				0	0	0	0	0	1	2	9	11	9



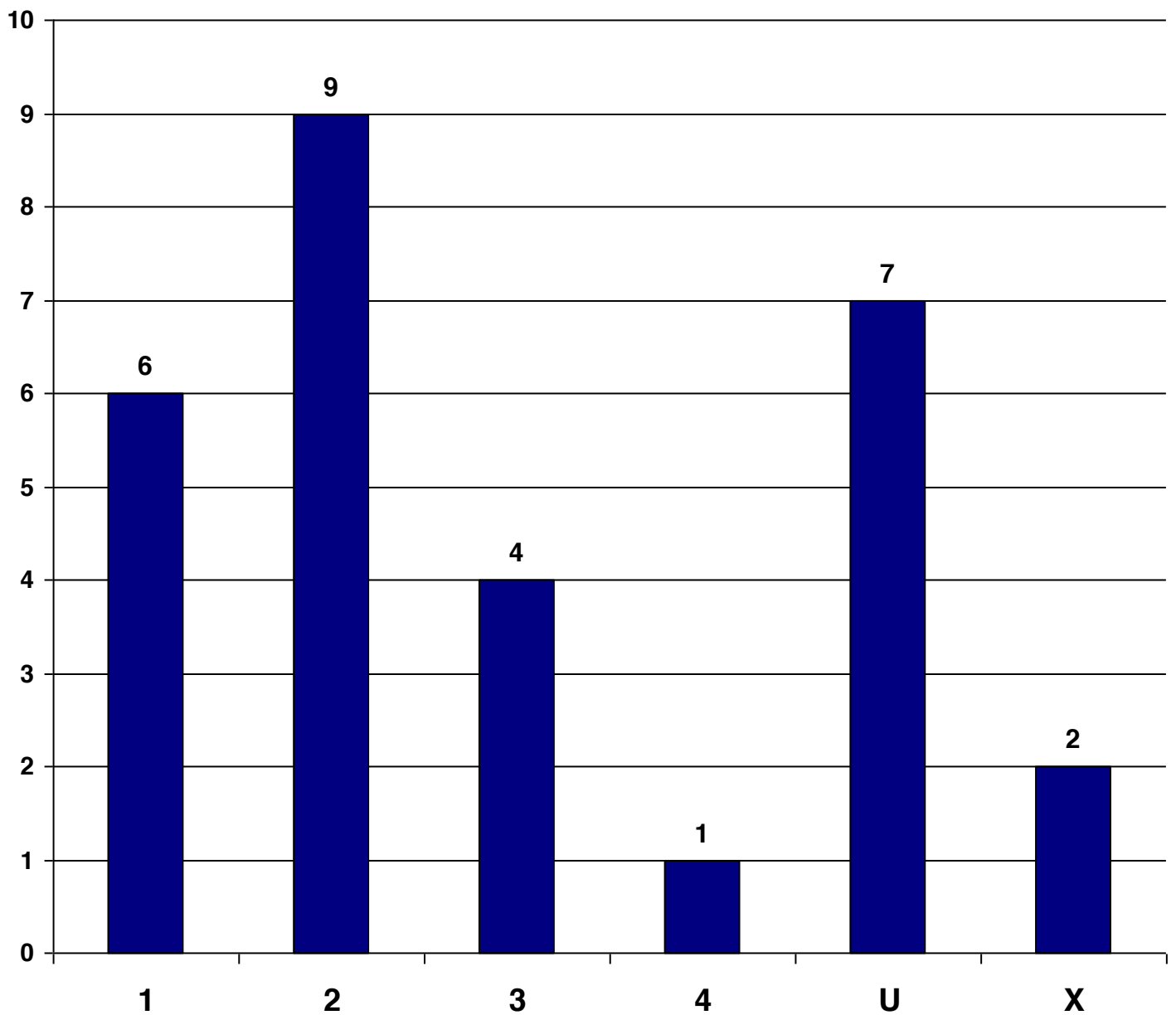
# Biology



## Biology

Entries: 29

APS	9-5	9-4	9-1	9	8	7	6	5	4	3	2	1	N/X
1.4	0.0%	3.4%	69.0%	0.0%	0.0%	0.0%	0.0%	0.0%	3.4%	13.8%	31.0%	20.7%	31.0%
				0	0	0	0	0	1	4	9	6	9



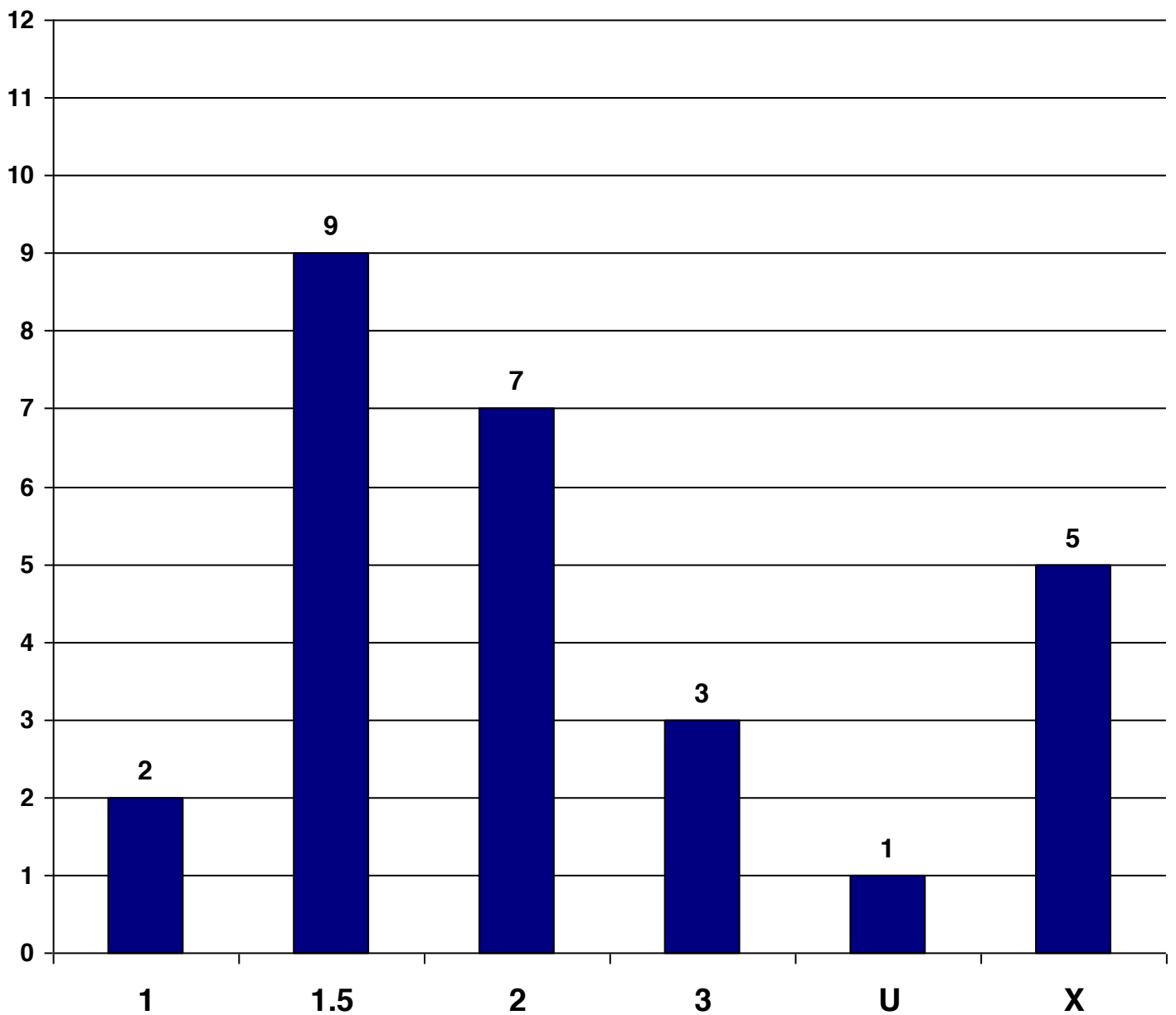
# Statistics



## Statistics

A\* A B C D E F G Entries: 27

APS	9-4	9-1	8	7	5.5	4	3	2	1.5	1	N/X
1.4	0.0%	77.8%	0.0%	0.0%	0.0%	0.0%	11.1%	25.9%	33.3%	7.4%	22.2%
			0	0	0	0	3	7	9	2	6

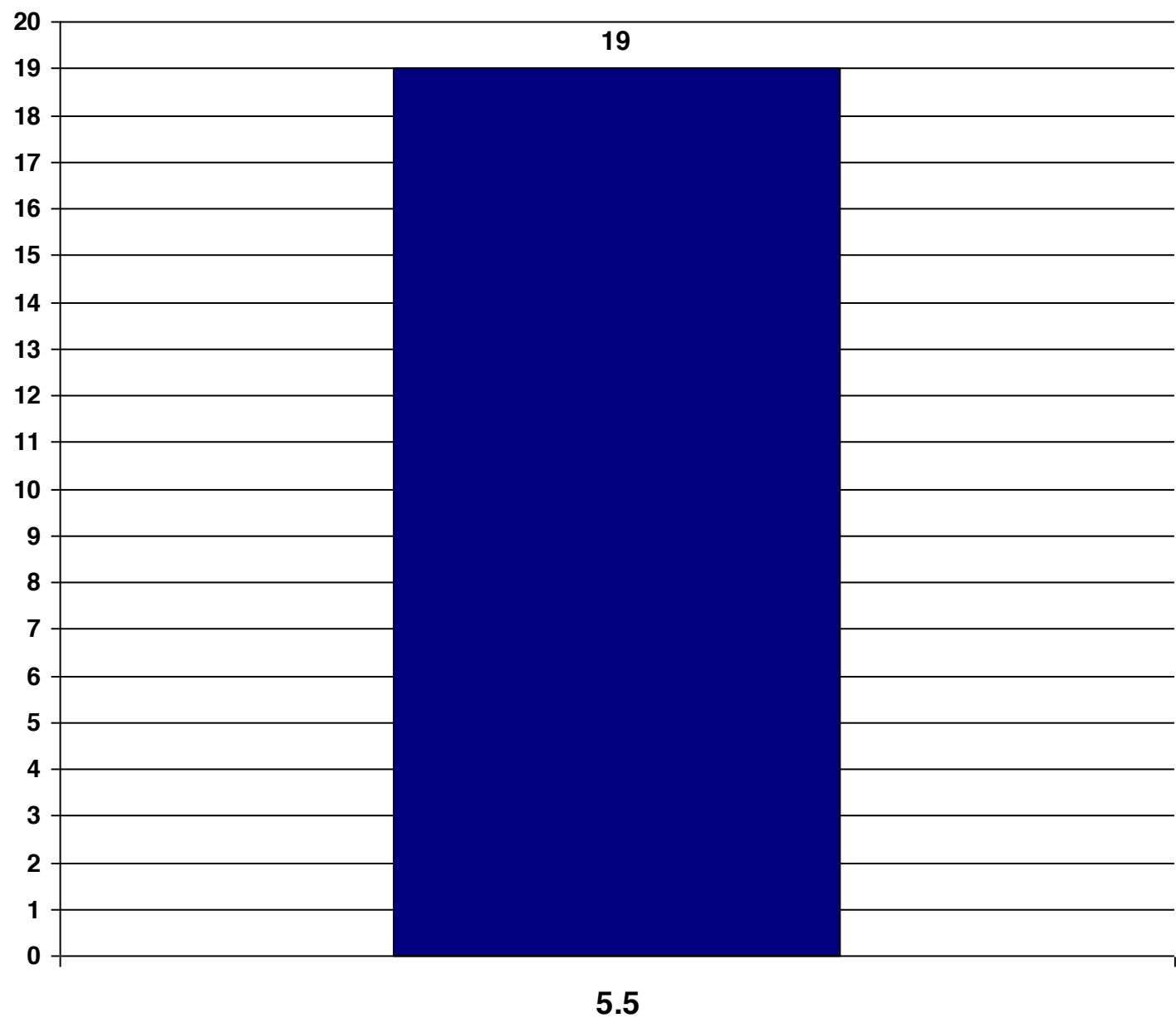


**Year 11 (2018 V1)**

# Equality



Equality			A*	A	B	C	D	E	F	G	Entries: 19
APS	9-4	9-1	8	7	5.5	4	3	2	1.5	1	N/X
5.5	100.0%	100.0%	0.0%	0.0%	100.0%	0.0%	0.0%	0.0%	0.0%	0.0%	0.0%
			0	0	19	0	0	0	0	0	0

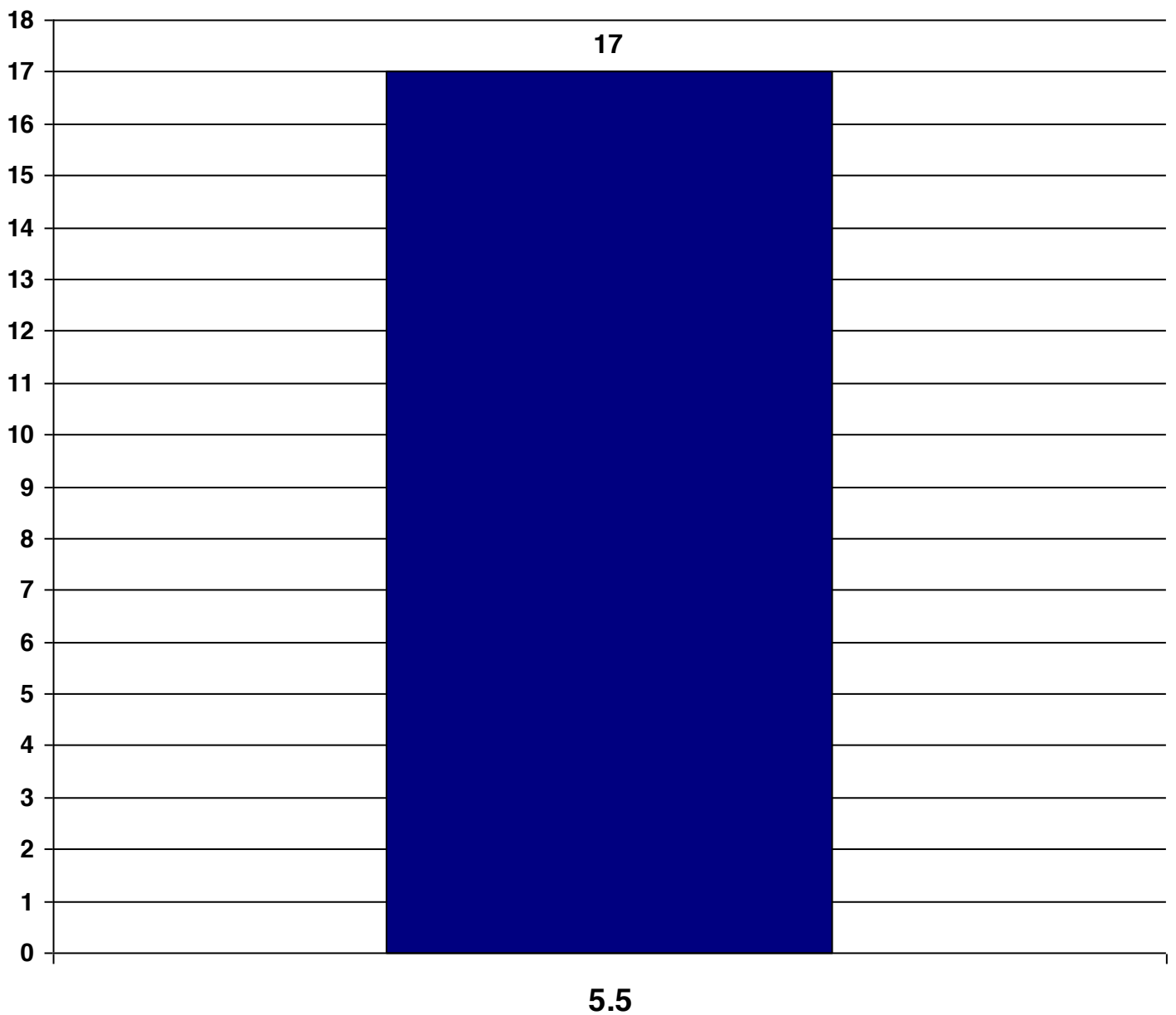


# Nutrition



## Nutrition

			A*	A	B	C	D	E	F	G	Entries: 17
APS	9-4	9-1	8	7	5.5	4	3	2	1.5	1	N/X
5.5	100.0%	100.0%	0.0%	0.0%	100.0%	0.0%	0.0%	0.0%	0.0%	0.0%	0.0%
			0	0	17	0	0	0	0	0	0



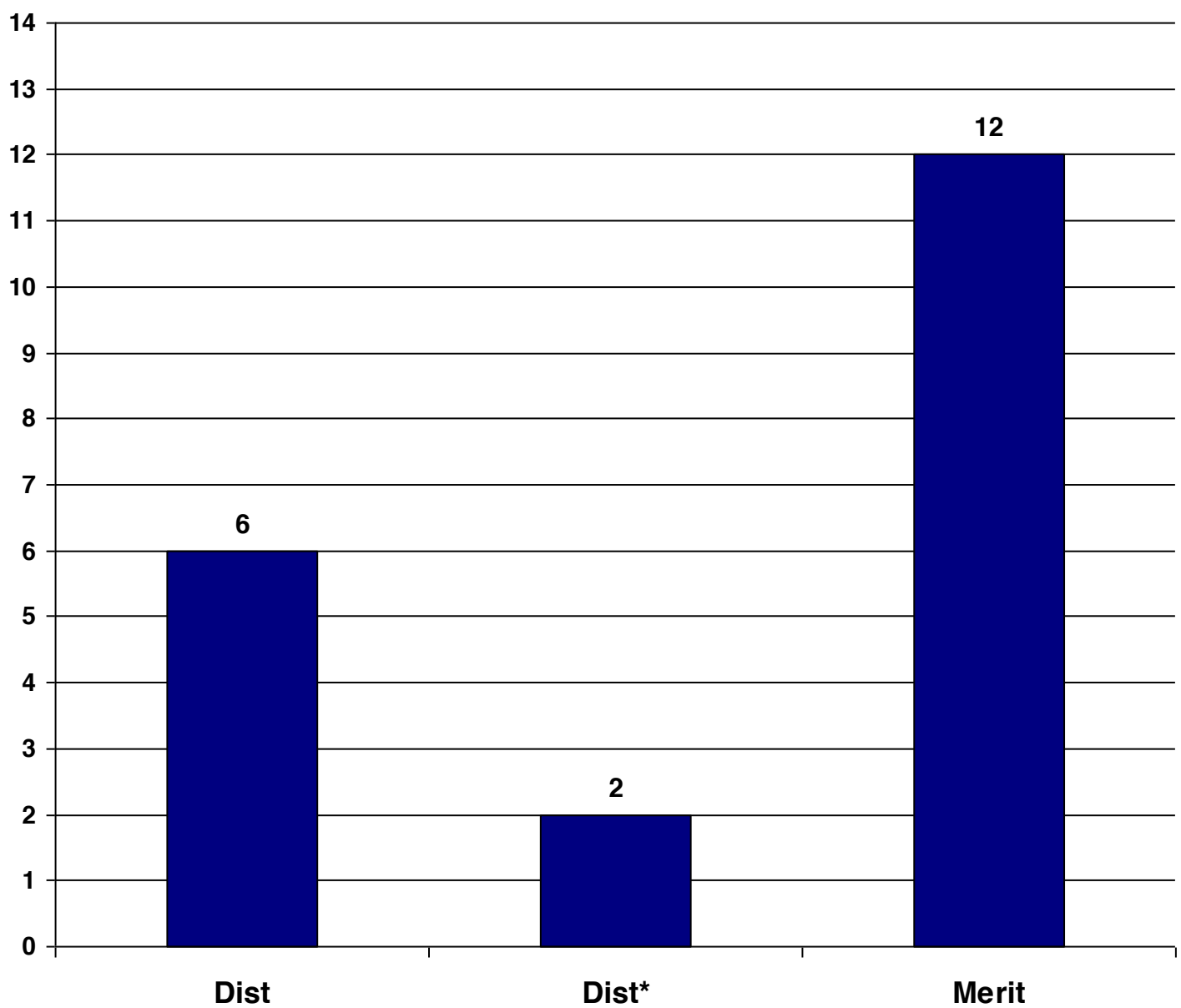
# IT (ECDL)



## IT (ECDL)

Entries: 20

L2Dist*	L2Dist	L2Merit	L2Pass	L1Pass
10.0%	30.0%	60.0%	0.0%	0.0%
2	6	12	0	0



Year 11 (2018 V1)

# PLT Park Campus Academy

## Functional Skills attainment analysis

### F/S English

Entries: 24

L2Pass	L1Pass	EL3	EL2	EL1
66.7%	33.3%	0.0%	0.0%	0.0%
16	8	0	0	0

### F/S Mathematics

Entries: 32

L2Pass	L1Pass	EL3	EL2	EL1
81.3%	18.8%	0.0%	0.0%	0.0%
26	6	0	0	0