



# Parklands High School

Learn | Respect | Aspire | Achieve

[parklandsacademy.co.uk](http://parklandsacademy.co.uk)

 An Aspirational Futures School

## Parent Bulletin

FRIDAY 24TH APRIL 2026

### Headteacher's Message

It has been lovely to welcome staff and pupils back this week; I hope you all had a refreshing Easter break.

This half term marks Year 11's final full half term in school. It has been a significant week for them. Final progress trackers were sent home on Tuesday, followed by their final Progress Evening last night. We were pleased to see so many families in school to discuss the final preparations for exam season. Today, Year 11 pupils also received their Leaver's Hoodies and attended a "Proud Assembly," where they were given letters from family and staff to provide a final emotional boost. Next week, the first GCSE exams begin with Art, Photography, and Spanish speaking.

We are incredibly proud of the dedication Year 11 have shown so far. They just need to maintain this focus for the final push!

Next week is equally important for Year 10, who will receive their trackers on Tuesday and participate in a Review Day with their House Achievement Leaders.

Thank you to those of you who completed our survey about next steps for mobile phones. We will be communicating the results in the near future.

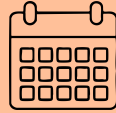
Warm regards,

*Mrs C Batson*

[parklandsacademy.co.uk](http://parklandsacademy.co.uk)



## Key Dates



Monday 4th May	Bank Holiday
Thursday 14th May	Year 7 progress evening

## School Socials

Don't forget to check our Facebook and Instagram pages to see what's been happening this week...

CLICK HERE!



Parklands High School



Parklands High School



PE



English



Europe House



Africa House



South America House

# COLD WATER KILLS

IT'S MORE DANGEROUS THAN IT LOOKS

More Info

# Be Wildfire aware this summer...

Click Me!

## Can you help our dance team?

Our dancers have been invited to represent the English Schools at the World School Dance Championships in London, in June this year.

It is a fantastic opportunity for us but very expensive so we are fundraising to help us get there.

Do you own a business, or have links to a business that may be able to donate us a raffle prize or sponsor us?

If so, please contact Mrs Marr at [gmarr@parklandsacademy.co.uk](mailto:gmarr@parklandsacademy.co.uk)

Thank you in advance for your support

## Weekly Learning Support Board

CLICK HERE!

Learning Support Board Week Commencing 27th April 2026

Special Educational Needs and Disabilities Local Offer in Lancashire

Joke of the Week

Difficult roads often lead to beautiful destinations

Useful Links

Follow us on Instagram: [phs\\_learningsupport](https://www.instagram.com/phs_learningsupport)

## JOIN US FOR AN UNFORGETTABLE WEEKEND!

### TRIP DETAILS

- TRAVEL & COST**
  - Departure: Friday 12th March. Depart at 13:30 pm
  - Return: Sunday 14th March (evening)
  - TOTAL COST: £200** (Includes transport by coach or minibus)
- BOOKING & PAYMENT**
  - Deposit £50/PP
  - FSM Options Available

Limited Spaces!

**SIGN UP NOW!**

Visit the PE Dept. for details or register online: [www.pgladventures.co.uk/school-sports](http://www.pgladventures.co.uk/school-sports)



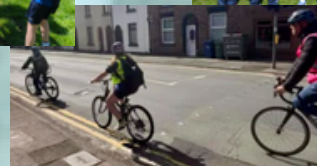


To all of the students who sat GCSE speaking exams in their home languages this week – French, Arabic and Russian!



It's been a busy week in our PE department....

It's officially the start of the summer term and the sun has decided to play too!



[Click to see more photos!](#)

### Next Week Year 10



#### A Respect day about 'Staying Safe'

As part of the day, pupils will take part in sessions about risk taking behaviour, relationships and sexual health. We will also have a visitor from Lancashire teaching hospital to talk about relationships; the charity **Key** to talk about domestic abuse; and a speaker from **The Amy Winehouse Foundation** who will be sharing their life story about addiction.

If you would like to know more about the work of these charities, please click on the links. As always, all the information shared with your child on the day will be available on their Secure Google classroom at the end of the day so you can continue the conversation at home.



**CAREER News**

2026

Click for latest news!



### Thank You - Proud Letters

A huge thank you to all the parents who took the time to write a "proud letter" to their child ahead of their **Year 11 exams**.

The letters were so well-received, and seeing the students read your words of support brought plenty of smiles and many happy tears. Thank you for providing that extra boost of confidence and love during such an important milestone.

To all my Year 11s: you've worked incredibly hard to get here. Believe in yourselves, stay focused, and remember that we are all rooting for you. **Good luck—you've got this!**

From Mrs Fox

## Classchart Champions

	Positive Points Total per House	Student awarded the most Positive Points this week
AFRICA	416	Louis D
ASIA	377	Macey G
AUSTRALASIA	428	Jemimah C
EUROPE	475	Lillie C
SOUTH AMERICA	444	Anya F

## Perfect 3s

Excellent Behaviour for Learning goes hand in hand with achievement. It is an excellent indicator of how your child is performing in lessons. Who's had the Perfect 3 since we've been back?

How many had the perfect 3 since September?	How many had the perfect 3 in the previous week?
Year 7: 67	Year 7: 171
Year 8: 56	Year 8: 148
Year 9: 57	Year 9: 170
Year 10: 60	Year 10: 166
Year 11: 62	Year 11: 177
All: 302	All: 832

Please congratulate your child if they have the Perfect 3. All BfL scores can be seen in the Edulink app

How many pupils have a BfL score of 2.99 – 3.00?
Year 7: 158
Year 8: 123
Year 9: 130
Year 10: 126
Year 11: 144
All: 681

## Pupil of the Week Awards

30/03/2026 – 02/04/2026

Adam B (POR), Freddie B (DEN), Max B (RSA), Aurelia C (EGY), Freddie C (NEP), Rocco C (NZL), Lillie C (POR), Eva C (JPN), Jemimah C (GUA), Louis D (CIV), Esme D (MOZ), Anya F (CHI), Layla F (POR), Joey F (NZL), Effie G (NOR), Leila H (HKG), Destiny H (PAR)

Reilly H (ITA), Charlie H (CHI), Leo J (NOR), Emily K (GER), Mila M (NOR), George M (SWE), Surrayah M (SWE), Maddox M (FIJ), Isaiah M (FIJ), Lilly S (BEL), Izzy S (HKG), Isabel T (DEN), Nell U (NZL), Beau W (PER), Jasmine X (MOZ)

# Weekly Attendance Update

As part of our ongoing commitment to fostering a positive and successful learning environment at Parklands, we would like to provide you with an update on the overall attendance across the school. Regular attendance is essential for student success, and we want to share important information regarding current trends, key attendance goals and ways we can work together to support all of our students.

We currently have **108** students who have 100% attendance so far this year. If your child is one of these students please congratulate them and continue to encourage their attendance, it is a great achievement.

House	This Week %	This Year %
ANZ	96.6%	93.8%
ASA	97.1%	94.7%
EUR	97.5%	95%
SAM	96.6%	94%
AFR	94.6%	93.9%
Total %	96.1%	93.8%

**Students are expected to be in the school building at 8:25am, heading to form at 8:30am and be in form by 8:35am. If they are arriving between 8:35am and 9:15am for any reason they need to enter through the pupil entrance and be signed in at the Top Office.**

## WIN PRIZES JUST FOR GETTING THEM TO SCHOOL! NEW PARENT RAFFLE

**WE KNOW HOW CRUCIAL YOUR ROLE IS IN SETTING YOUR CHILD UP FOR SUCCESS, AND WE WANT TO REWARD YOUR HARD WORK! WHEN CHILDREN ARE IN SCHOOL EVERY SINGLE DAY, THEIR CHANCES OF THRIVING VASTLY INCREASE.**

**TO SAY THANK YOU FOR YOUR CONTINUED SUPPORT, WE ARE EXCITED TO LAUNCH A NEW ATTENDANCE INCENTIVE—JUST FOR PARENTS! FOR EVERY WEEK YOUR CHILD ACHIEVES 100% ATTENDANCE, YOU WILL AUTOMATICALLY EARN A RAFFLE TICKET FOR OUR GRAND SUMMER TERM DRAW.**

**Prizes will include:**

- Supermarket vouchers
- Gift cards for fantastic local businesses
- Plus, a few exciting surprises!

**Thank you for partnering with us to make every school day count!**

# WIN

# Safeguarding Information

The One Stop Shop is a drop in where families can access support from different services under one roof. We offer a warm welcome, refreshments, and an opportunity to get help with:

- Housing
- Finance
- Accessing food banks
- Mental health support
- Emotional Health and Wellbeing
- ... & more

**Children and Family Wellbeing Service**  
 Tel: 01257 516 316  
 Email: Chorleyfamilyhub@lancashire.gov.uk

**FAMILY HUB CHORLEY**  
 Drop-in at Clayton Brook Community Centre  
 Tuesday 28th April  
 09:30am to 11:30am

Lancashire County Council

## SERVICES HERE TO HELP

Get help with referrals for further support, and access to a range of community agencies, as well as information on lots of free groups (including parenting, domestic abuse, relationship communication, speech & language, and pre-school play sessions).



Citizens Advice Lancashire West

Home-Start Central Lancashire

Unify Credit Union

Lancashire Talking Therapies

Chorley Buddies

SendIAS Lancashire SEND IAS

Places For People

key

Social Prescribing Service Chorley Council

Inspire Youth Zone



Providing NHS services

# Exams can be tough.

They're supposed to test you, and sometimes that can be overwhelming. But we're here if it ever feels too much.

