

Friday 5th September 2025



A Warm Welcome!

We have had a lovely start to the new term with all our children and young people arriving with big smiles on their faces and looking extremely smart in their school uniforms. We especially want to welcome our new pupils and staff who have joined the PCA family. All have made a fantastic start to their PCA journey and we really look forward to working with them.

Attendance this week has been excellent with many classes achieving 100% attendance. Pupils have also arrived on time and the behaviour across school has been excellent.

I would like to take this opportunity to thank the Site Team and the Business Admin Team who worked throughout the summer to ensure the school was ready for the children to start on Wednesday. I would also like to say a huge well done to the staff who ran our summer scheme at the beginning of the holiday. I know all the children and young people had a fantastic time.

I am also delighted to let you all know that Mr Whittaker has now taken up the position of Deputy Headteacher (Pastoral). He will work alongside Miss Gardiner (Deputy Headteacher - Curriculum) to support me in leading the school. I am sure you will agree this is an excellent appointment for the school.

We are all looking forward to working with you again this year, to support our children and young people to be the very best that they can be. Please don't forget that we have an open door policy at PCA. Please don't ever worry or wonder about anything, just get in touch.

Free School Meals

Please make sure that if your child is now in Year 3 or has just started PCA that you have applied for Free School meals if you are eligible. You can do this by visiting

fsm@blackpool.gov.uk

Payments are to be made on Parent pay. If you need login details please contact the office and we will send them home with your child.



Please see the link to apply for Free school meals.
<https://apply.cloudforedu.org.uk/ofsm/sims>

If you have already used this link before then please **do not reapply**. If your child has moved into **year 3** then they no longer entitled to Universal Free School meals and **you will need to apply**.

School drop off and pick up

Drop Off:

The school day starts at 08:50am, please be aware that the school car park gates will be open until 8:50 am each morning. At this time they will be closed for 15 minutes to ensure that all children that arrive on minibuses can enter the school safely. Therefore no one should arrive on school site before 8:30am.

Pick up:

Our school carpark gates will also be closed from 3:05pm to allow children to safely exit the site. Please do not arrive on site before 2:45pm.

Congratulations

to classes 1B, 1M, 1N,
1W, 2B, 2E, 3C, 3H,
3T, 3W and 4T
for 100% attendance
this week.
Whole school
attendance is
95.3%

Dates for your diary

10th September – Meet the teacher 3:30 – 5:30

26th September – Macmillan Coffee morning

1st – 3rd October – Year 9 Residential

23rd October – 3rd November – School closes for half term

MEET &
GREET



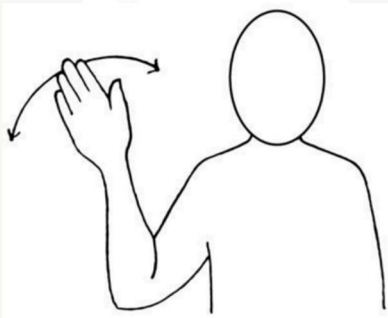
Sign and symbol of the week



This week our sign and symbol of the week is 'Hi' and 'Goodbye'.



hi



We would like to say 'Hi' to all our new Staff members and New students joining us this year.



goodbye

New Pupils

Elijah - 1B
Frankie - 1B
Theo - 1B
Aoife-Maeve - 1B
Dhalia - 1M
Theo-David - 1M
Thomas - 1M
Keiha-Lilly - 1N
Elijah - 1N
Hugo-Bobby - 1W
George - 1W
Everleigh - 1W
Trishan - 2E
Mazikeen - 2M
Jayda - 2P
Carter - 2R
Rylee - 2R
Brody-Lee - 2W



Henry - 2W
Skylar - 2W
Caroline - 2W
Matylda - 3B
Milo - 3B
Tomos - 3B
Milo - 3J
Chloe - 3J
Leyland - 3L
Eliza-Rae - 3P
India - 3P
Gustav - 3P
Sofia - 3T
Jayden - 3W
Tommy - 3W
Maisie - 4M
Jayden - 5J



WELCOME



Miss Threlfall
ANTA



Miss Simpson
ANTA



Miss Platt
ANTA



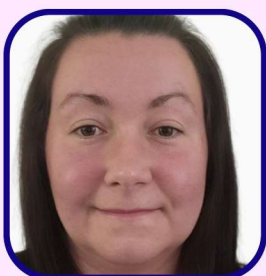
Miss Little
ANTA



Miss Perry
ANTA



Miss Hatton
ANTA



Miss Hall
ANTA



Miss Smith
ANTA



Mr Morgan-
Nimmo
ATA



Miss Moorcroft
ATA

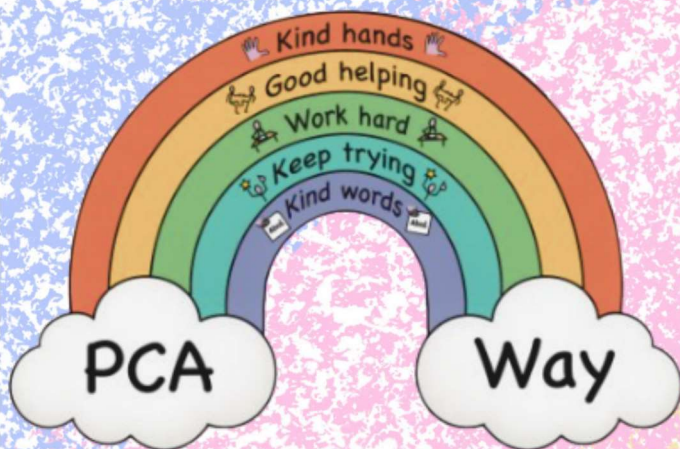
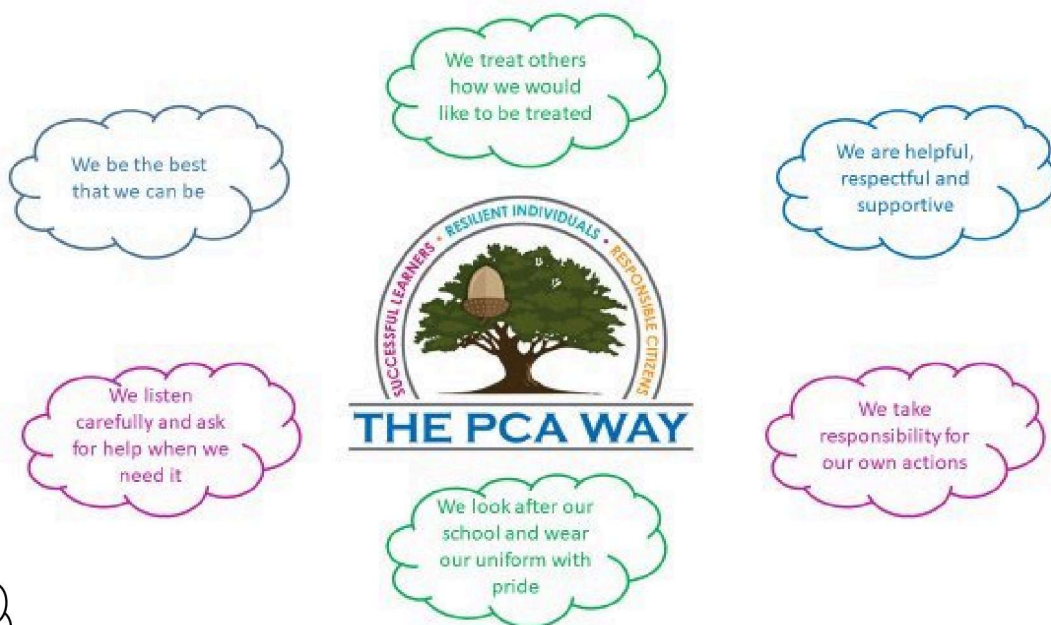


Miss Bland
ATA



Miss
McWhinney
Teacher

Welcome to our new Staff
members



"At PCA our aim is to enable our young people to become Successful Learners, Resilient Individuals and Responsible Citizens. To support this to happen we ALL follow our ethos of expectations known as 'The PCA way' at the appropriate level. "

Use of Physical Interventions

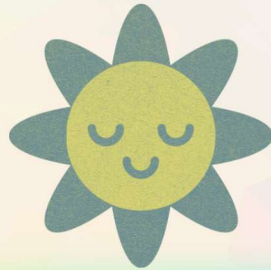
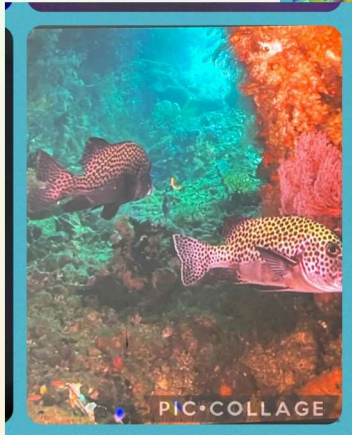
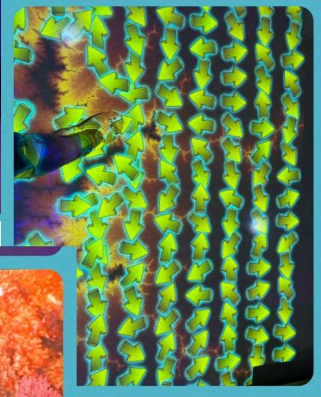
Staff at Park Community Academy have undertaken a nationally recognised 'positive behaviour support' training programme.

This focuses on de-escalation techniques and communication strategies to manage challenging behaviours effectively.

However, when a child has lost self-control there may be occasions where staff will use physical intervention methods designed to keep children safe from further harm. These Physical interventions are carried out within the legal guidance set by the Department for Education.

★ Our Sensory Room Has Had a Makeover! ★

We're excited to share that our Sensory Room has been fully refreshed and updated with new equipment and upgraded features - all designed to offer a calming, interactive, and immersive space for our children.



🌈 Highlights Include:

🎥 **Interactive Floor Projection System**
Children can engage with stunning visuals that respond to movement and touch—encouraging exploration, creativity, and fun.

🎵 **Vibro-acoustic Seating**
Feel the sound! Special seating that gently vibrates with music and sound—perfect for calming and sensory regulation.

Chill
Out

WELCOME

✨ We've also completed a deep clean and full system update to keep everything running smoothly and safely. ✨

We can't wait for the children to experience the newly enhanced space!





Park Community Academy

School Uniform.



School Uniform

Our Uniform for Primary and Secondary Pupils consists of a

- Navy Jumper or Cardigan with PCA logo,
- Navy or white polo with PCA logo or without,
- Black or dark grey trousers, skirt or shorts (Optional for Summer)

It is very useful to have a bag and PCA logo book bags are available to buy from school if your child would like one.

In Year 7 pupils also have the option to wear a black blazer with PCA logo, white shirt and a green and blue tie.

In Year 11 pupils wear a maroon jumper or cardigan.

Sixth Form pupils can wear their own clothes.

Jumpers, cardigans, polos, ties, book bags, and blazer badges can be purchased from the school office. All payments are to be made on Parent pay.

PCA also operate a Uniform Swap Shop where good quality second hand items can be purchased for £1 an item .

Children are expected to wear full school uniform every day. Full PE kits should be in school on PE days. Please check with your child's class teacher when their PE day is.



Shoes

Healthy feet are very important, therefore all children should wear safe, sensible and weather appropriate black shoes. No trainers are to be worn unless it is for a PE lesson. Shoes must be ALL black.



PE Kits

The PE kit consists of

- A pair of black shorts,
- A red polo shirt with PCA logo,
- A pair of sport socks,
- Black pumps or trainers.

Jewellery

Our PCA policy on jewellery is that pupils may wear one single stud in each ear. Necklaces, rings etc should not be worn. Pupils may wear a wristwatch however NOT apple/smart watches which are linked to a mobile device.

Swimming

If your child is having swimming lesson or at swimming club they will need a one-piece swimming costume and towel in a named bag.

Labeling clothes

Please ensure all items of uniform are marked with your child's name, using a waterproof pen or sewn-on labels. This is so they can be easily identified.

MOMENTS MATTER, ATTENDANCE COUNTS.

Regular school attendance is an important part of giving children the best possible start in life. The aim should be to attend 100% of the time.

What can you do to help to improve attendance?

In order to enable children and young people to achieve their full potential:

- Check the school day and school calendar in advance
 - Actively encourage regular school attendance
- Communicate with the school immediately to resolve any concerns or worries, rather than keep your child off school.

Routines

The easiest way to ensure that your child attends school on time every day is to establish a good evening and morning routine.

If mornings are hectic in your household, prepare as much as possible the night before.

Punctuality

Our school day starts at 8.50am
Parents are legally responsible for ensuring their child attends school on time every day

Medical Appointments

Where possible, make medical appointments outside of school hours. Where this is not possible, the amount of school time missed must be kept to a minimum.

Did you know?

10 minutes late
everyday = 33 hours
lost learning each
year!



Holidays in term time

Due to government legislation Park Community Academy can not authorise any holiday in term time unless it is for exceptional circumstances. Family holidays should be taken during school holidays. If, in exceptional circumstances, you need to request permission for a family holiday during term time, you should complete an application form, at least two weeks in advance, stating clearly the reason why the holiday must be taken in term time and outlining the social and educational benefits to your child. However please be aware that the law states that the need or desire for a holiday or other absence for the purpose of leisure or recreation would not constitute an exceptional circumstance.

Therefore, although some pupils face more complex barriers to attendance, such as long-term health conditions and/or special educational needs and disabilities (SEND). Their right to education is the same as any other pupil hence our attendance ambition remains the same.



Too ill to attend school?

Children can attend school with minor ailments (tooth ache, head ache, stomach ache, cold, sore throat). Over the counter medicines can be given before school. PCA will always contact you if your child becomes too ill to stay in school.

If you are unsure how long your child should be absent from school with an illness, speak to the school staff or your doctor for advice.

Persistent absence

Although we encourage all pupils to attend every day, our school attendance target is 95%.

Below 90% attendance is classed as persistent absence.

When pupils are at risk of persistent absence parents/carers will be invited to an attendance surgery where our family team will actively support the family regarding attendance.



Pupil Welfare

PCA work closely with a Pupil Welfare Officer (PWO) if a pupil's attendance becomes a concern.

The PWO works with PCA and families to help raise attendance levels for individual pupils to ensure that they can access a good education.

PWOs help to identify and remove barriers which may be preventing a child receiving education.

Reporting an absence

If your child will be absent from school, it is the parent/carers responsibility to inform the school office as soon as possible. If you do not get in touch, PCA staff will contact home on the first day a pupil is absent. We will also work closely with you to support your child's attendance if further absences occur.



Penalty Notices

Following the guidance from the Department for Education (Working together to improve school attendance (19/8/2024))

Penalty notices issued for offences that take place at a rate of £160 per parent per child. This can be paid at £80 if paid within 21 days.

Any second penalty notice issued to the same parent for the same child within a rolling 3-year period will be issued at the rate of £160 to be paid within 28 days with no option for a discounted rate.

The threshold at which a penalty notice must be considered is set at 10 sessions (equivalent to 5 days) of unauthorised absence within a rolling 10-school week period. This may include absences as a result of arriving late after the register closes. The 10 school weeks may span different terms or school years.

It is with great sadness that I write to let you know that a former member of staff and governor sadly passed away over the summer. Anne Roache worked at PCA for many years , starting off as a Support Assistant before training as a teacher. Anne then went on to teach across the primary department and became key stage 2 team leader.

When Anne retired to spend more time with her grandchildren, she continued to support the school as a Governor, before needing to step down from this role last year due to ill health. Anne leaves such a legacy across PCA, having touched the lives of many children, their families and staff. She will be greatly missed.

