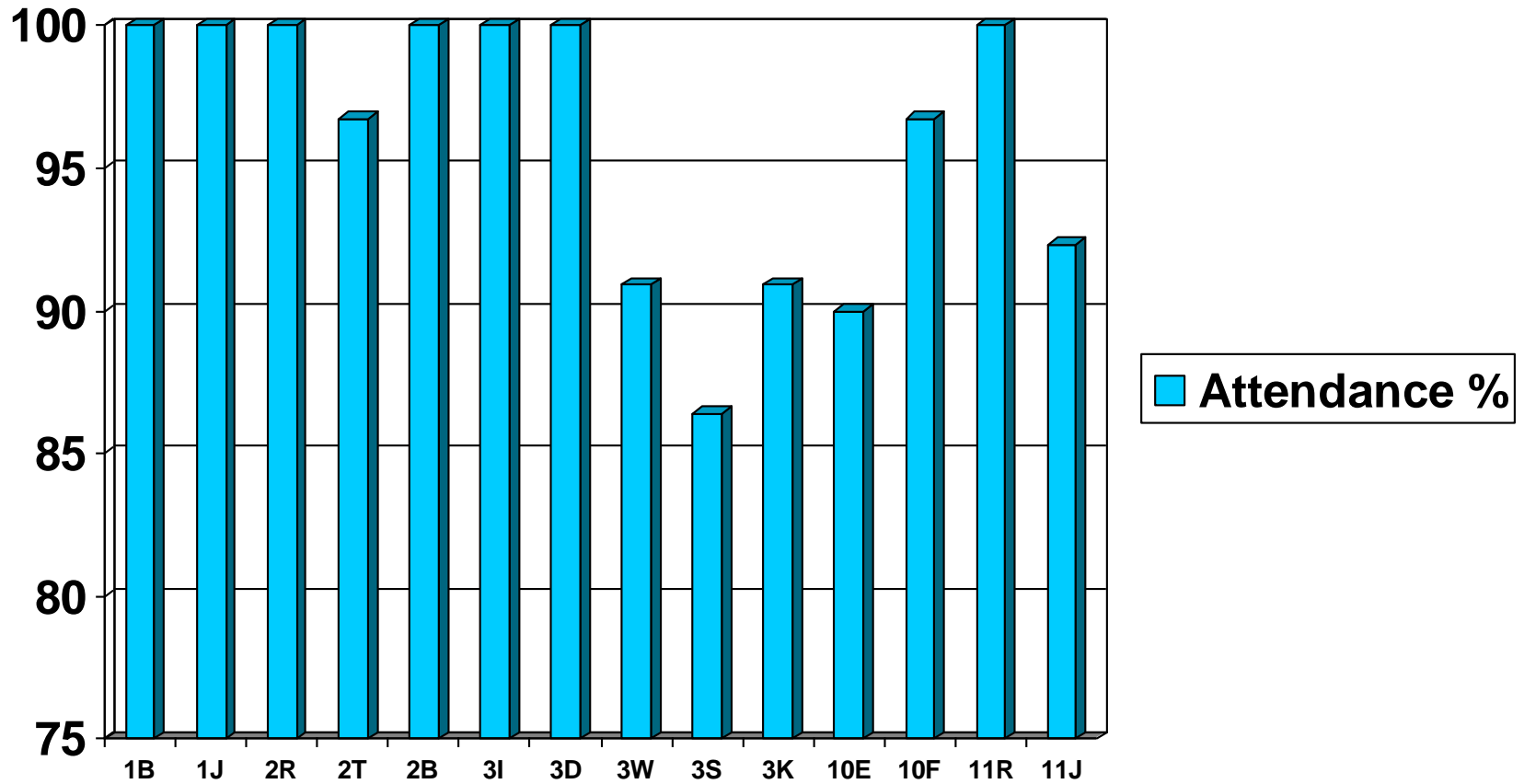
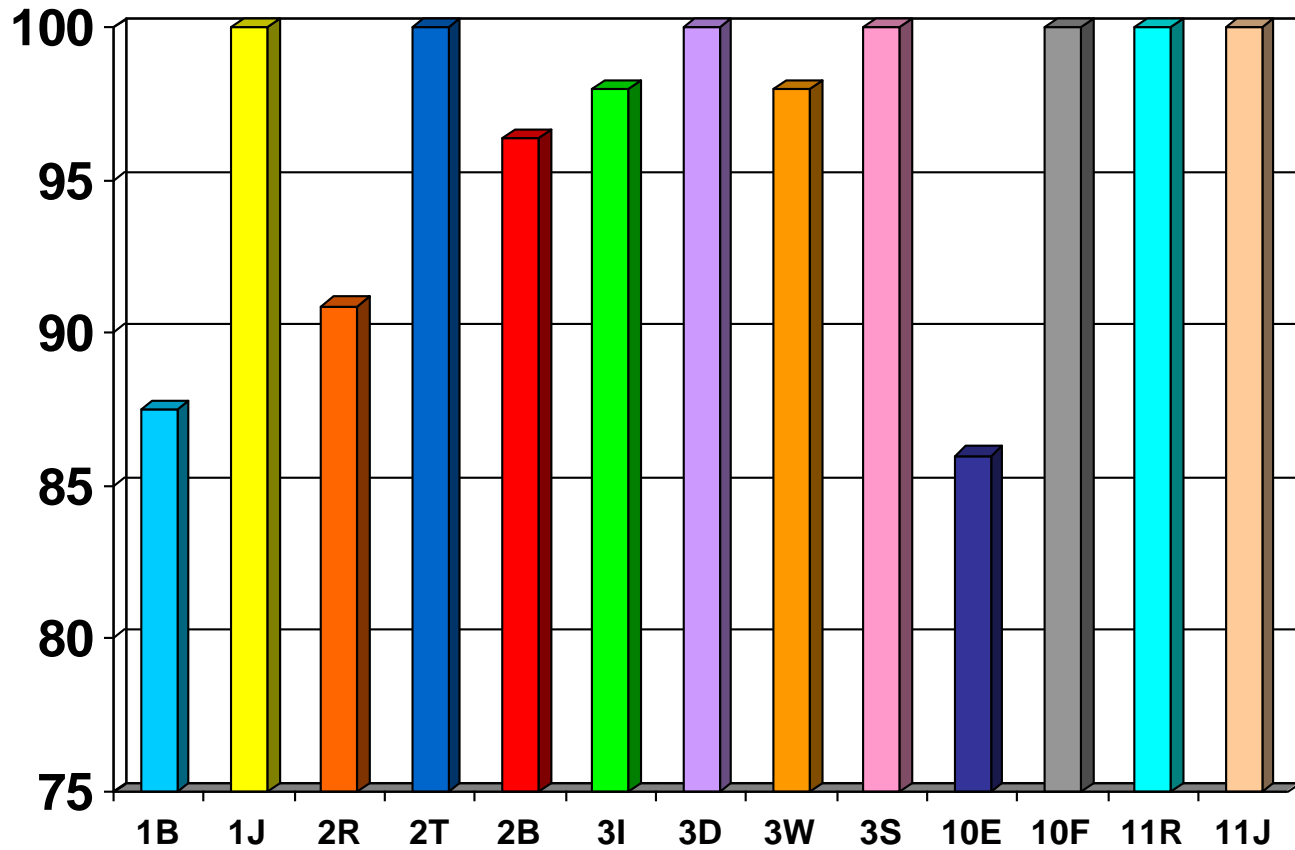


# Weekly Attendance by Class



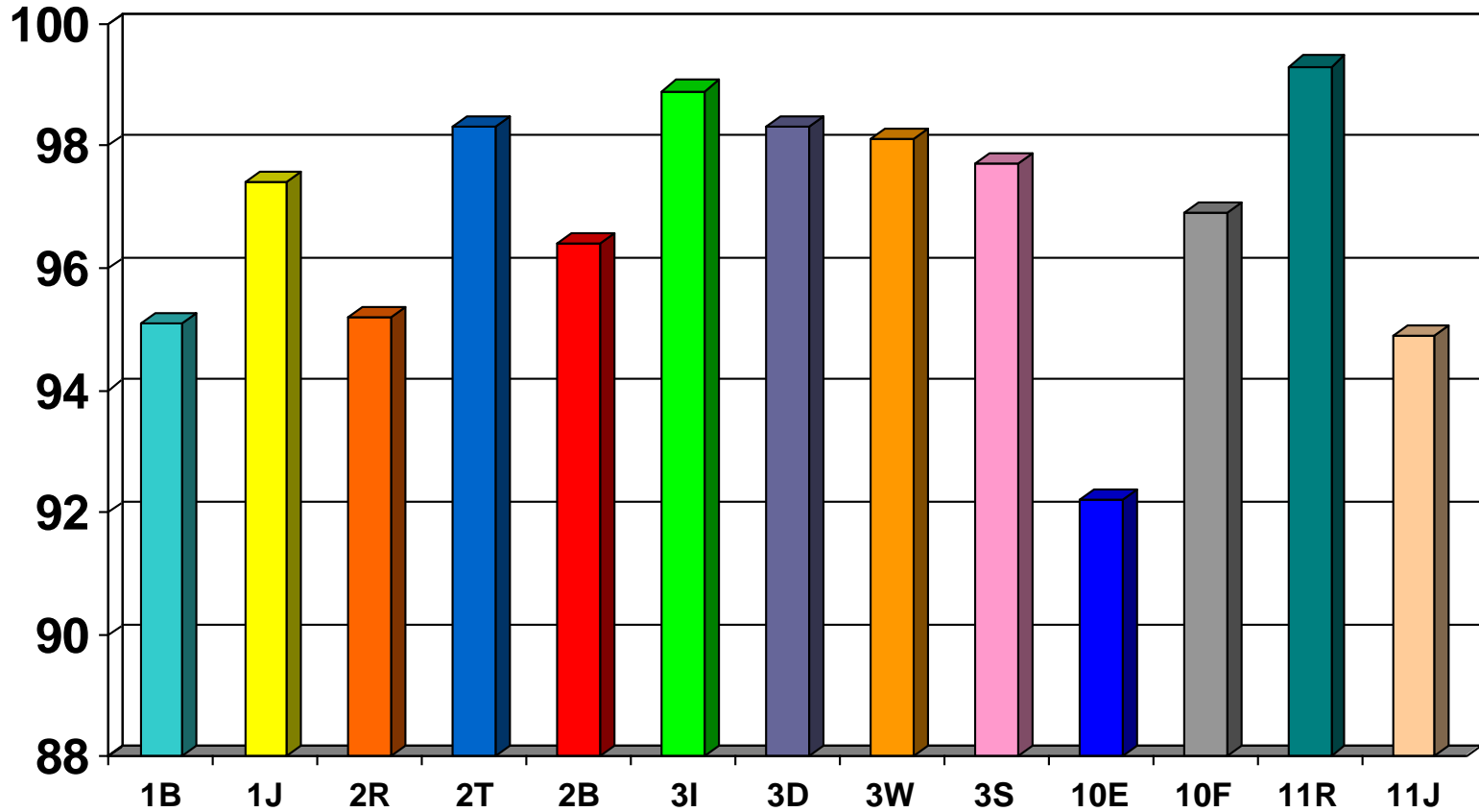
# Weekly Attendance by Class

## 28<sup>th</sup> September 2012



# Monthly Attendance by Class

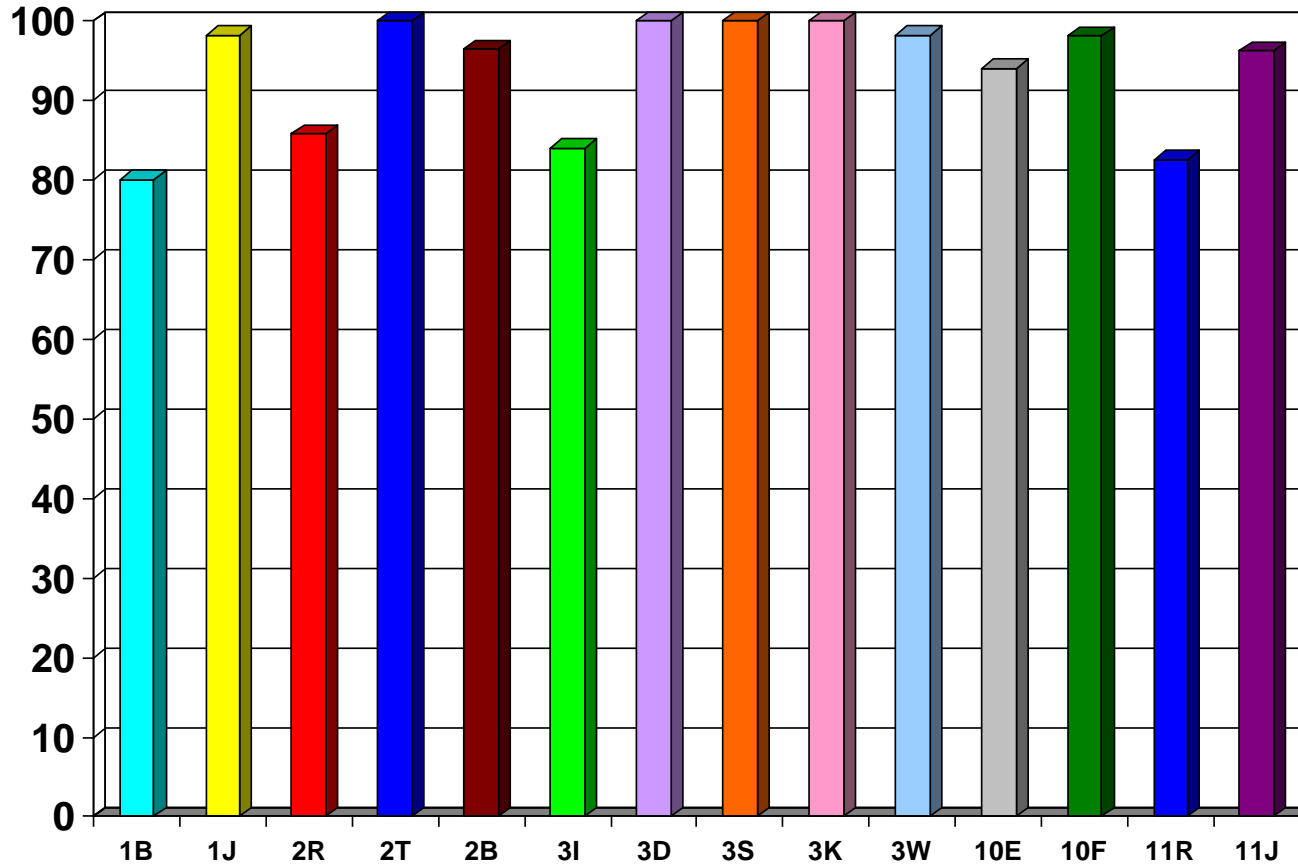
## September 2012



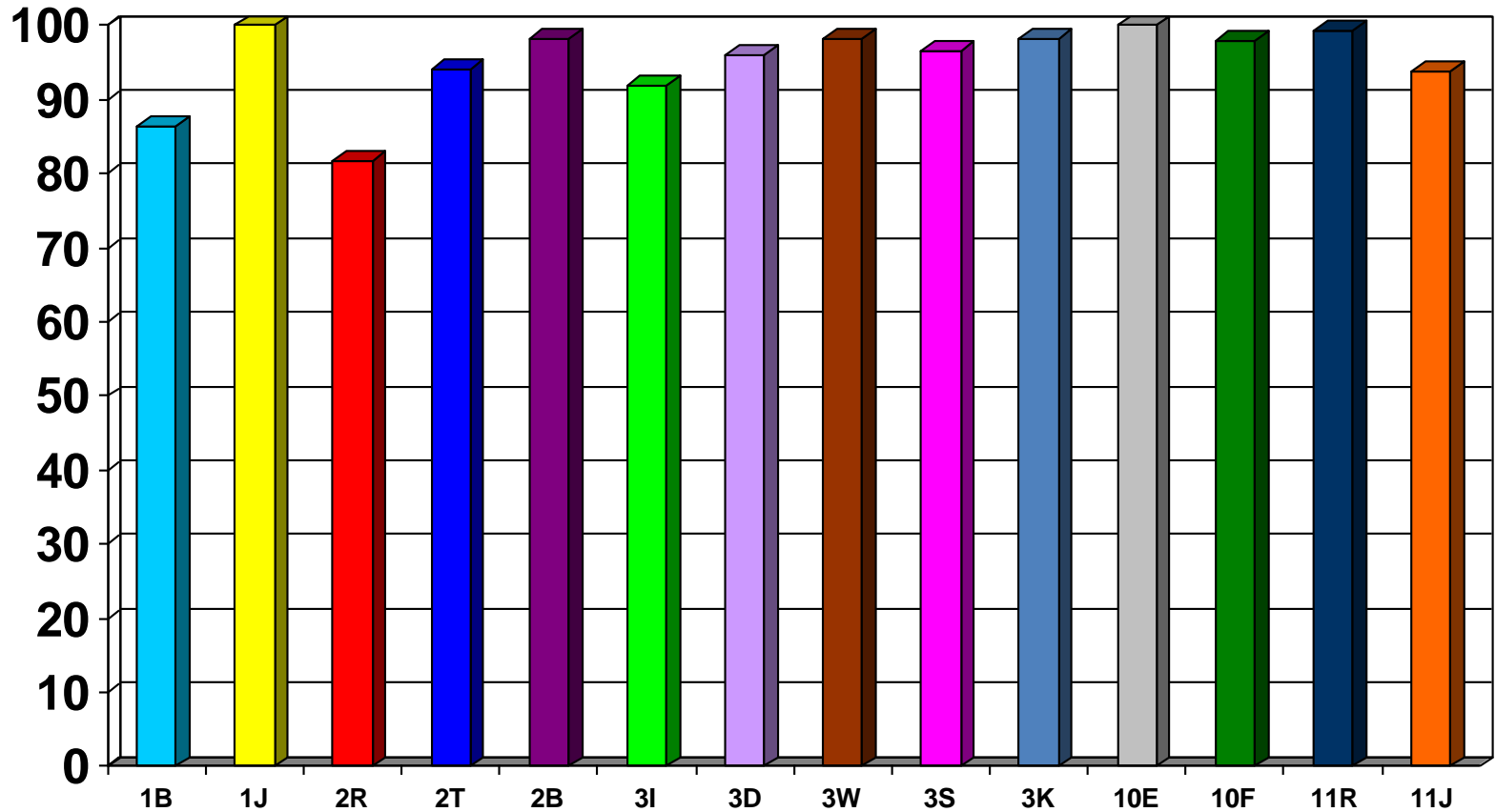
# Whole School Attendance 2011 - 2012

- Whole School Attendance 95%
- Authorised Absence 4.1%
- Unauthorised Absence 0.7%

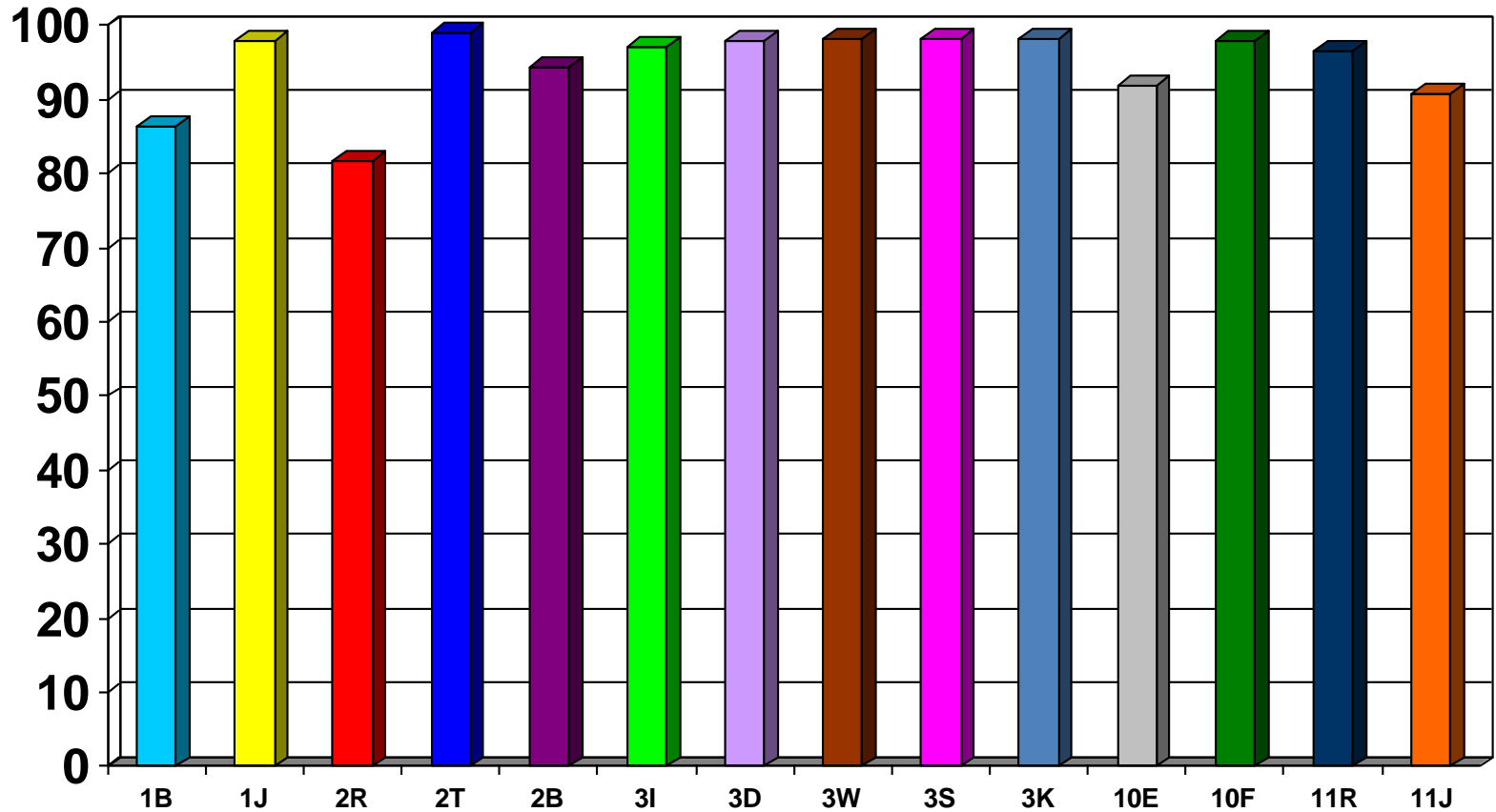
# Weekly Attendance by Class w/e: 5<sup>th</sup> October 2012



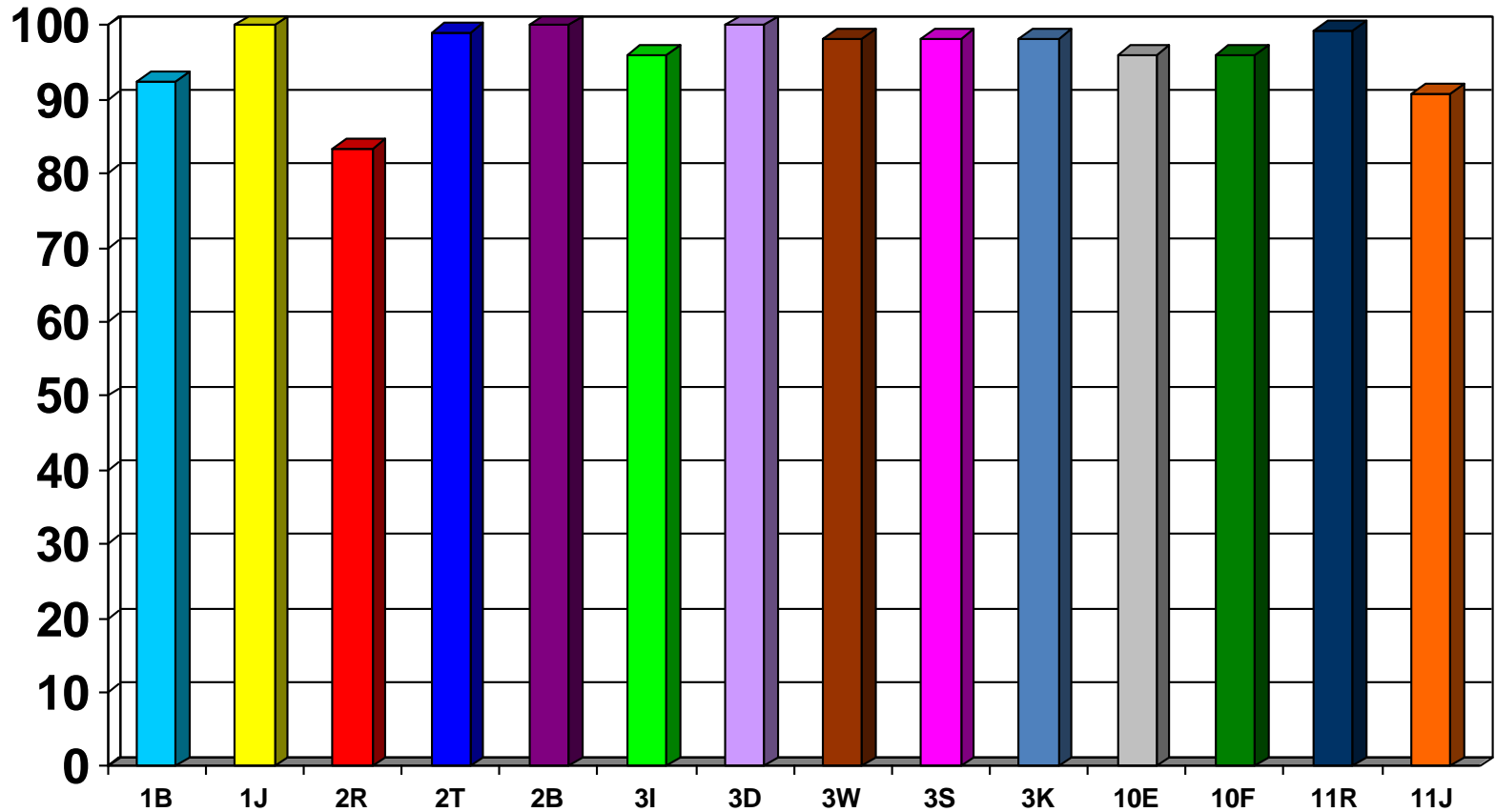
# Weekly Attendance by Class w/e 12<sup>th</sup> October 2012



# Weekly Attendance by Class w/e 19<sup>th</sup> October 2012



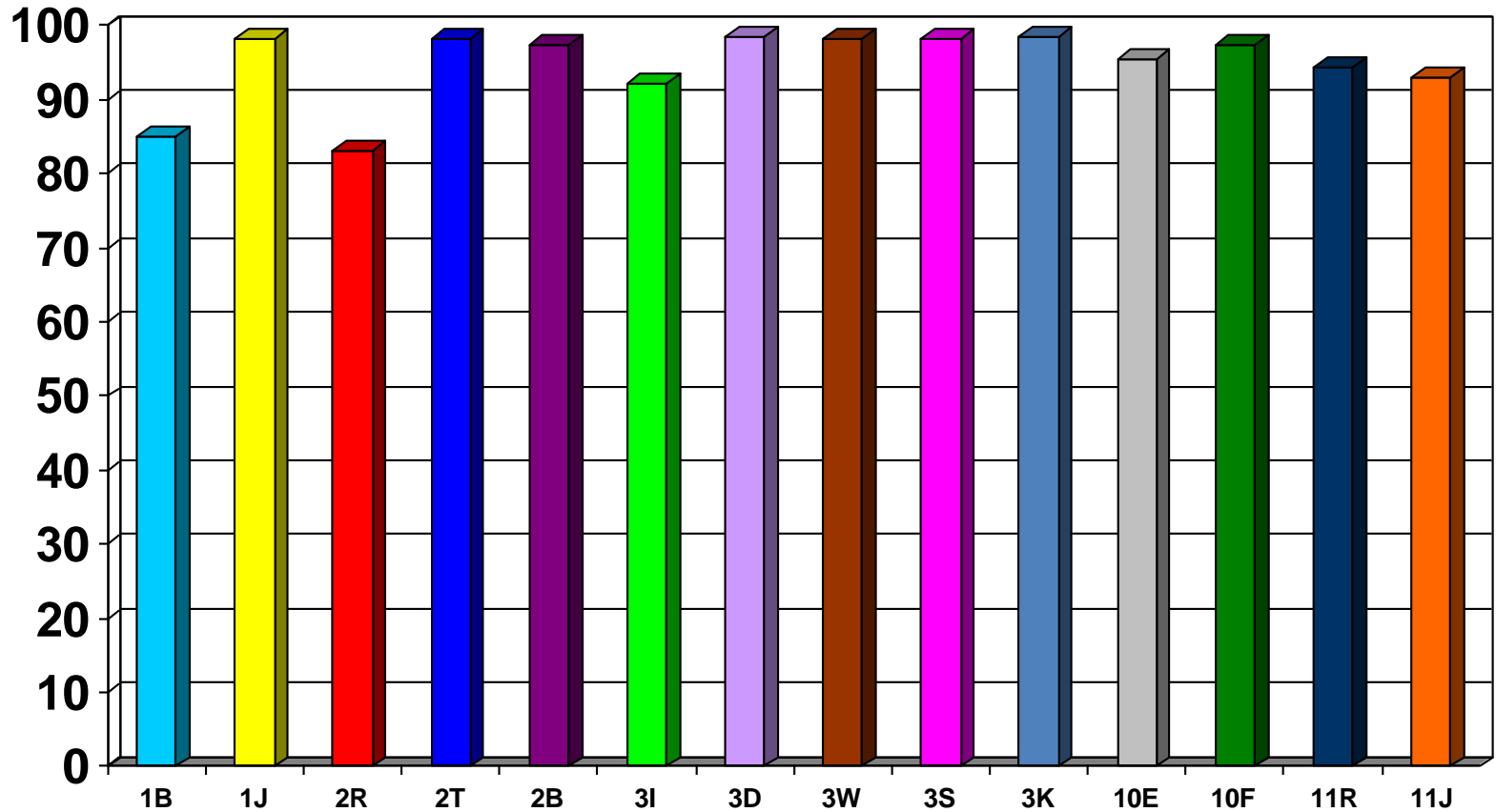
# Weekly Attendance by Class w/e 26<sup>th</sup> October 2012



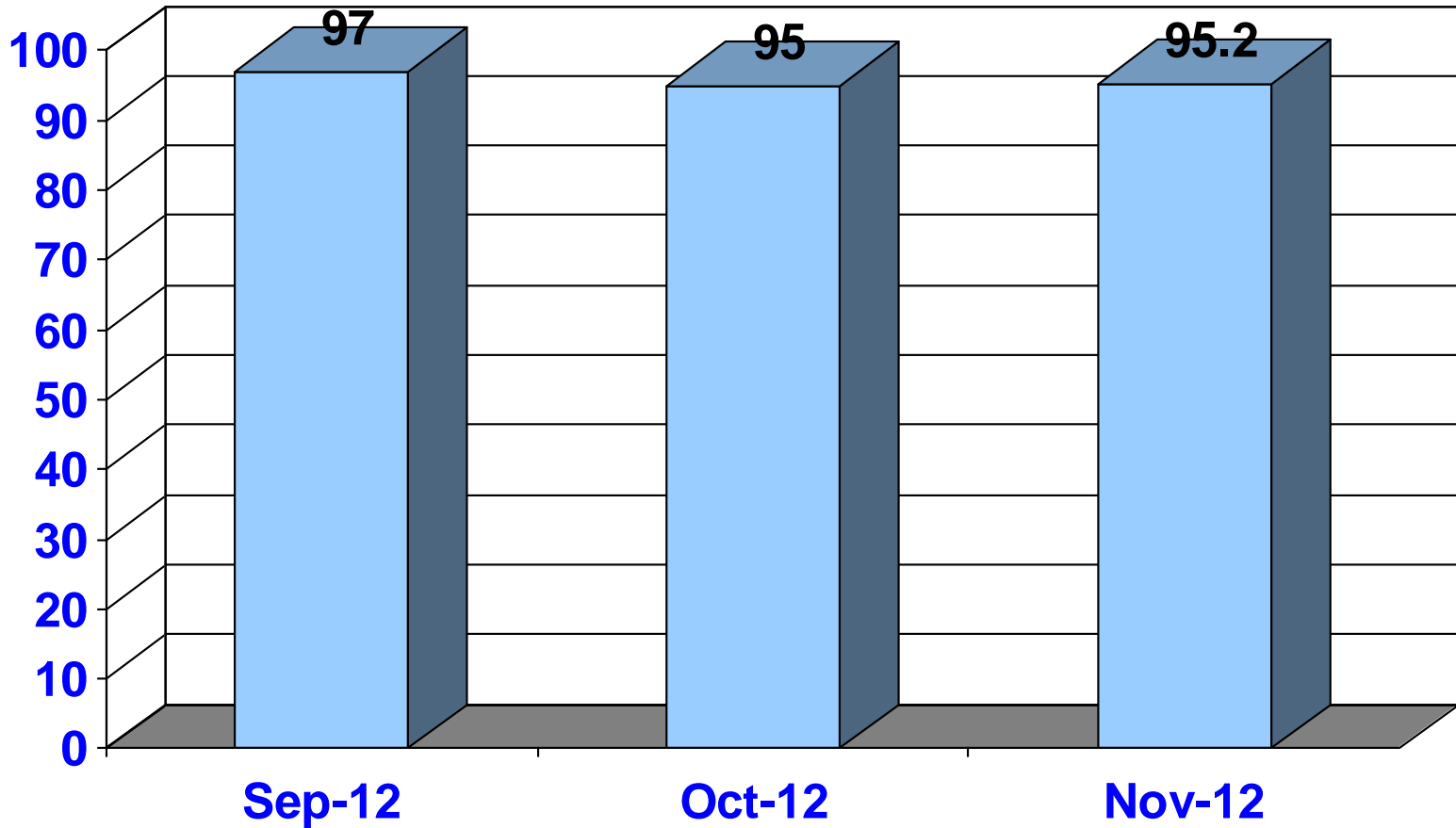


# Monthly Attendance by Class

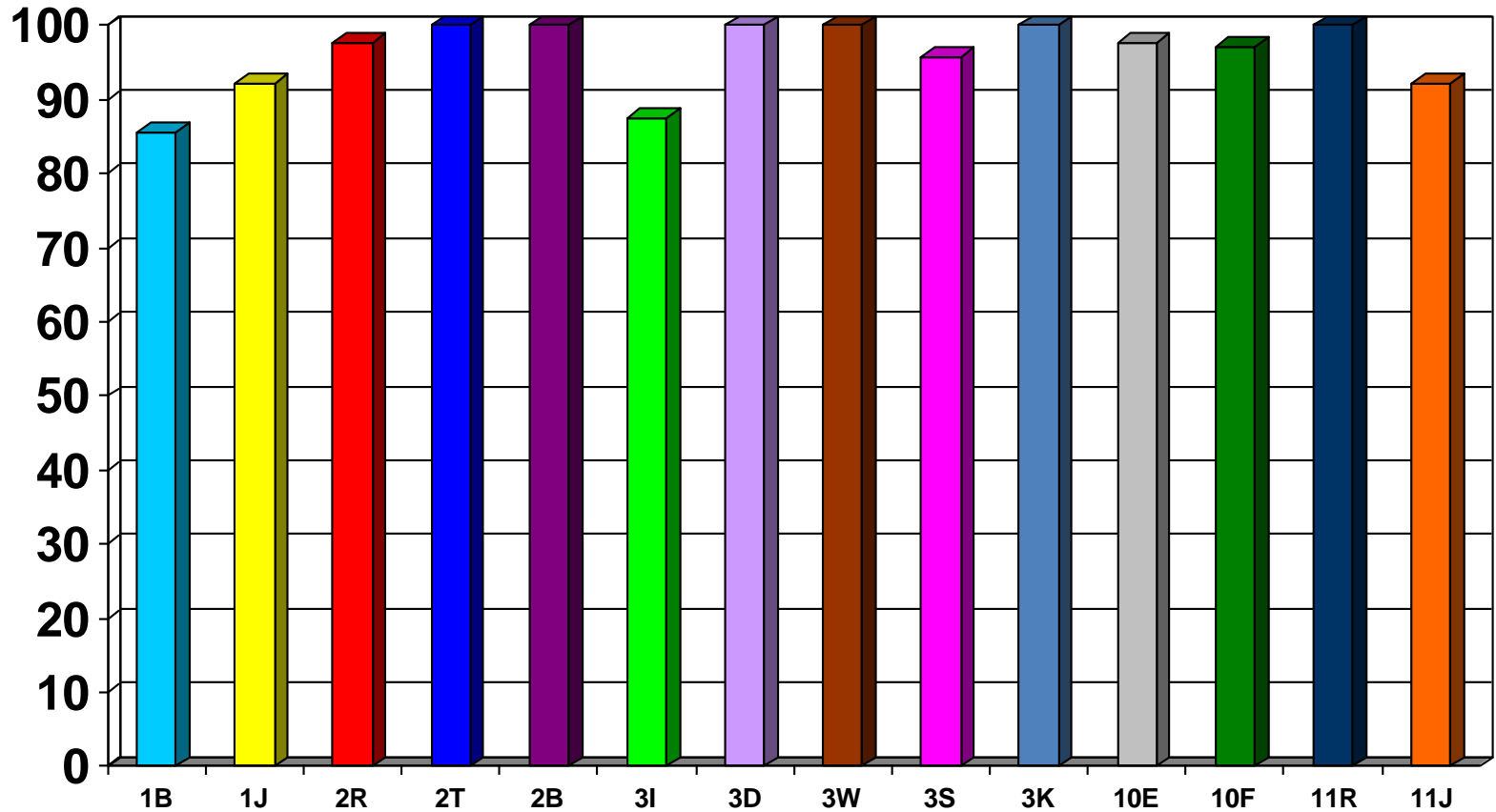
## October 2012



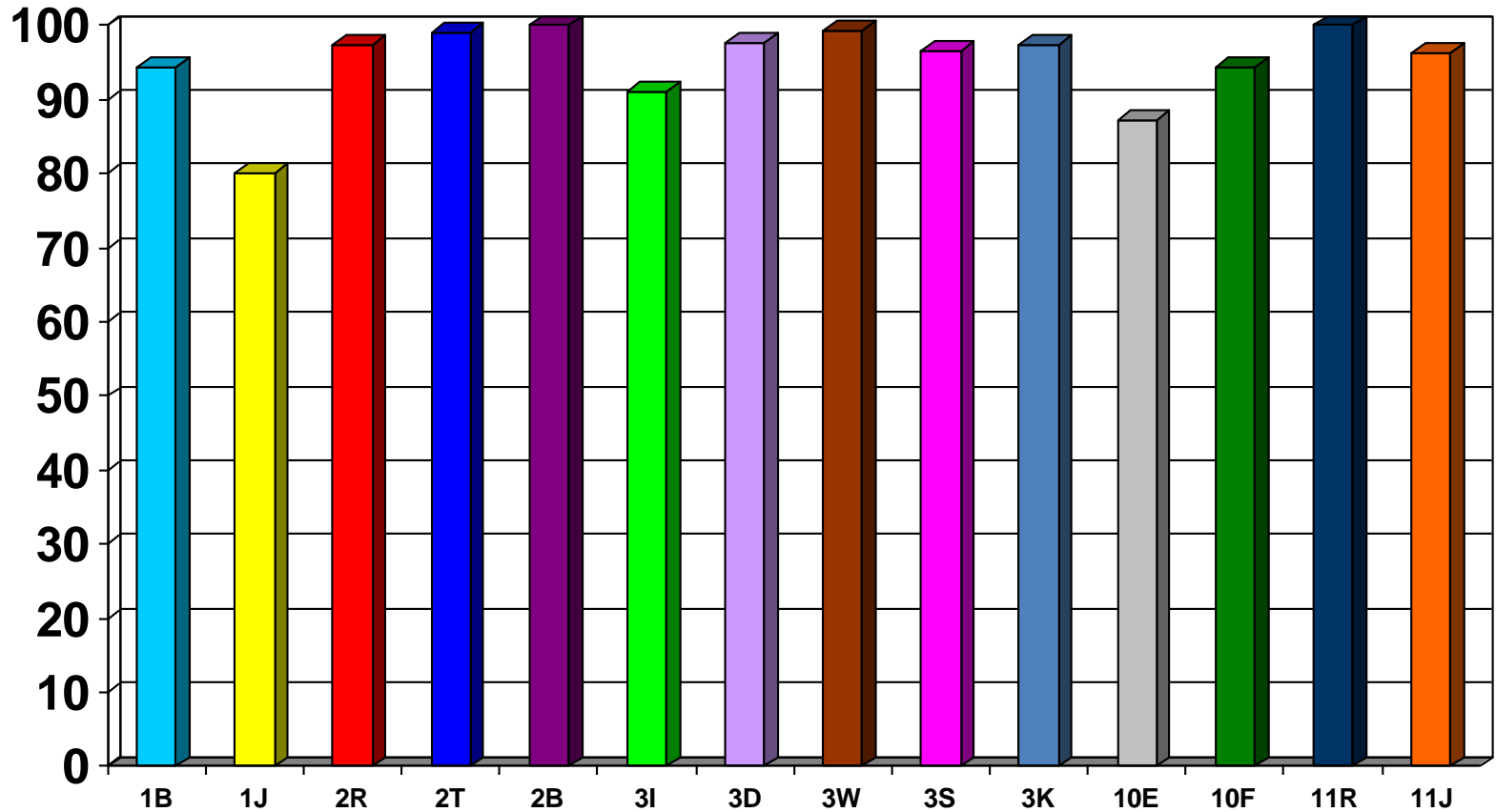
# Whole School Monthly Attendance 2012 -2013



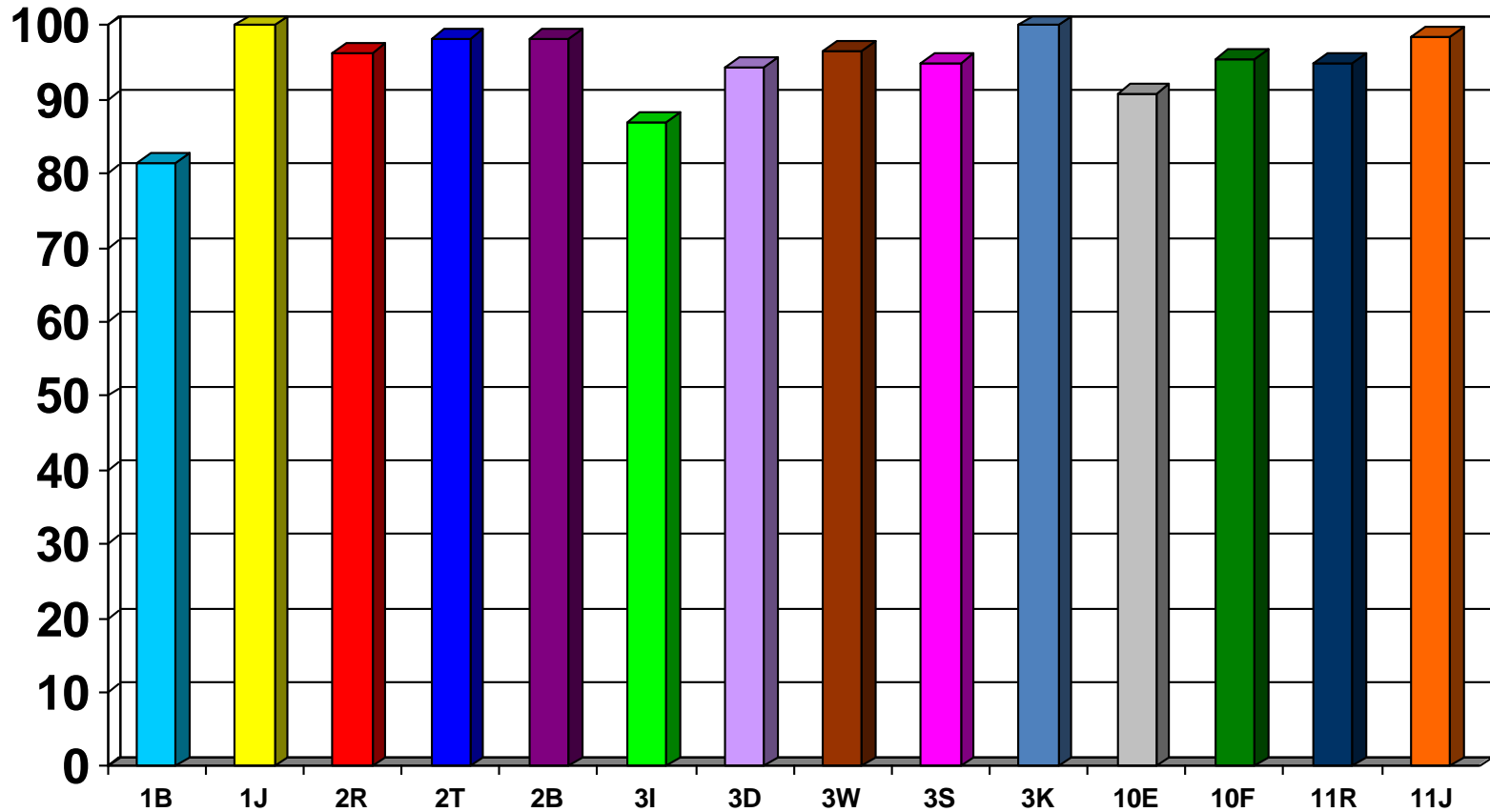
# Weekly Attendance by Class w/e 9<sup>th</sup> November 2012



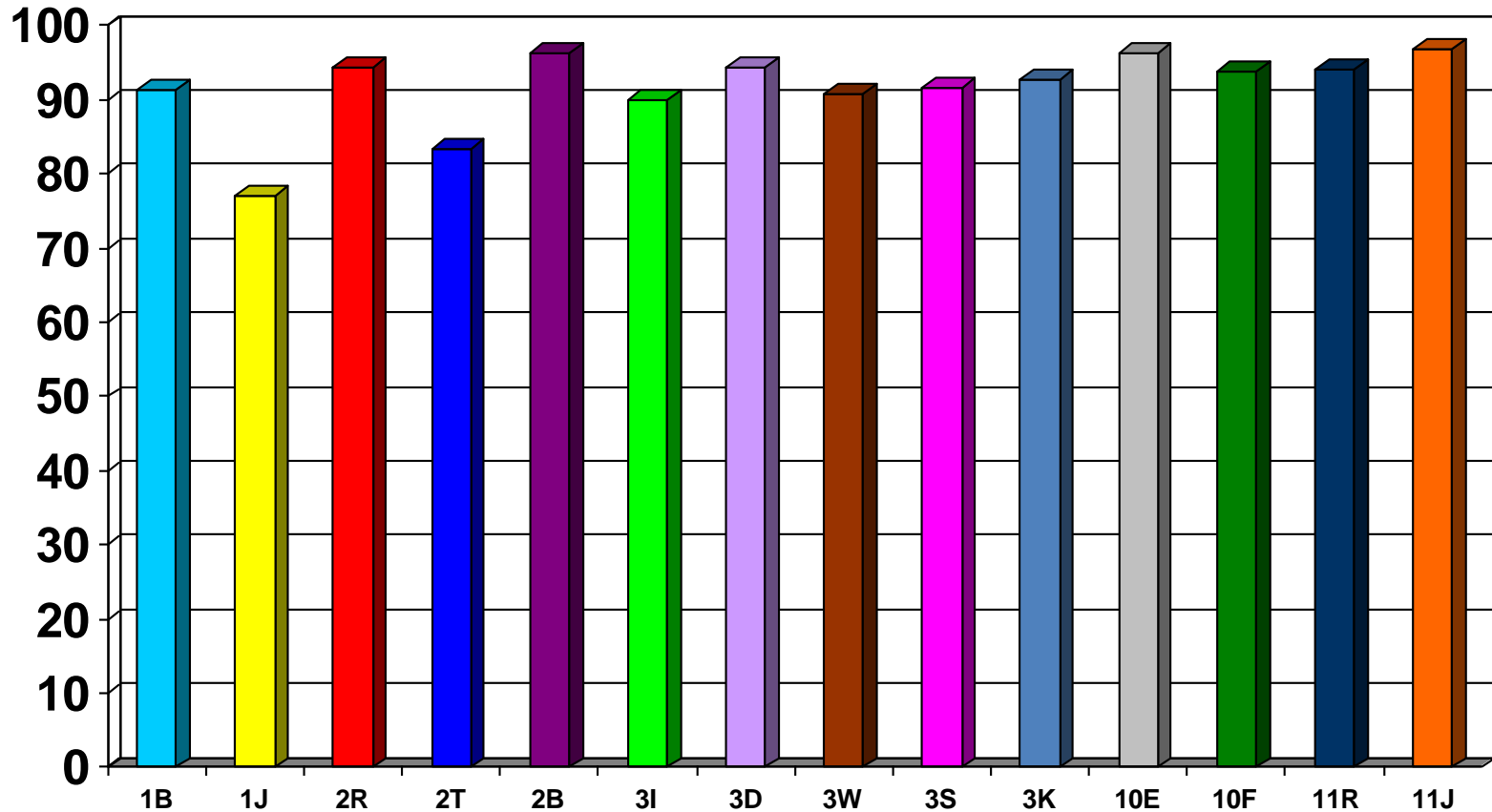
# Weekly Attendance by Class w/e 16th November 2012



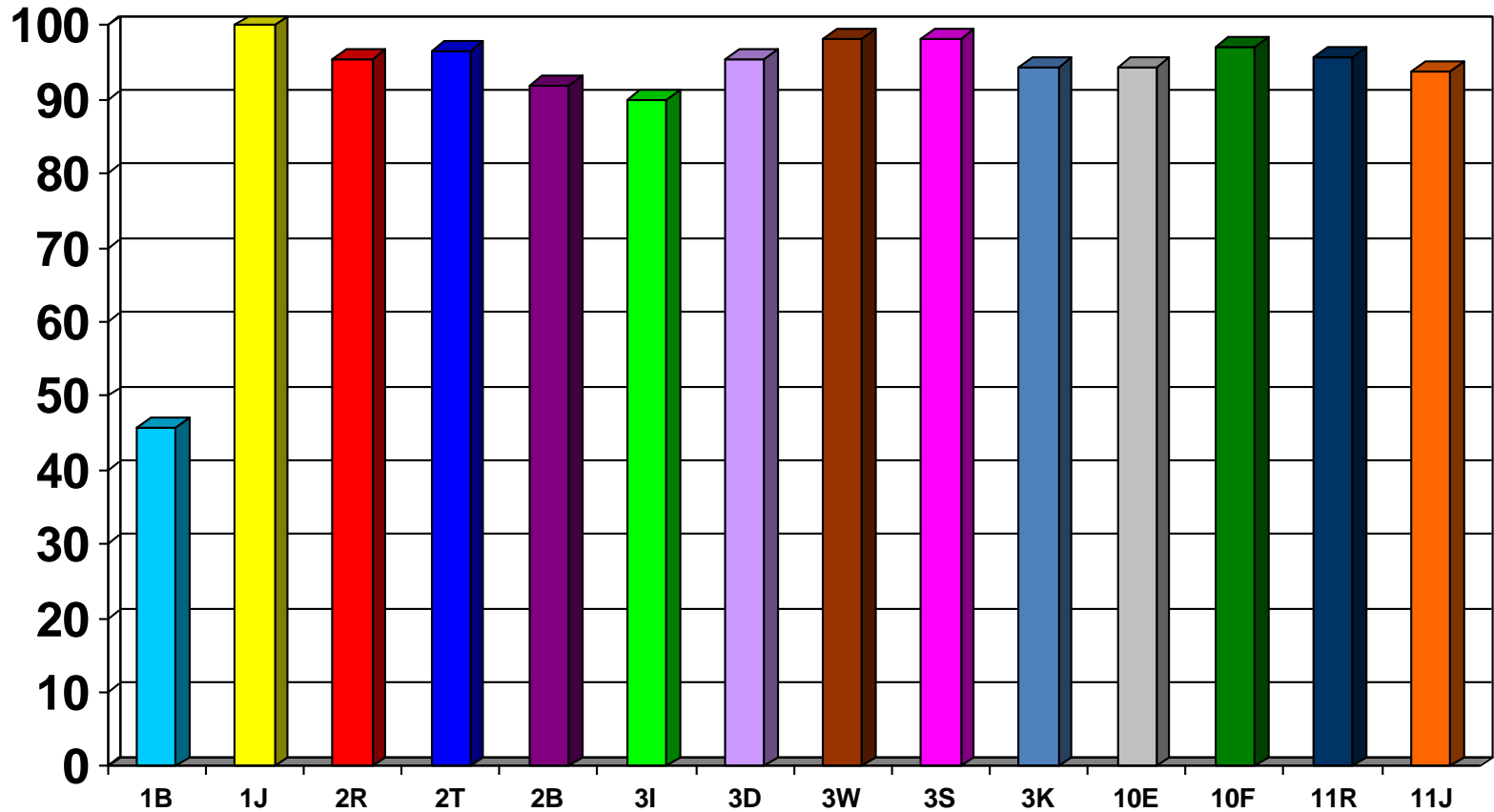
# Weekly Attendance by Class w/e 23rd November 2012



# Weekly Attendance by Class w/e 30th November 2012

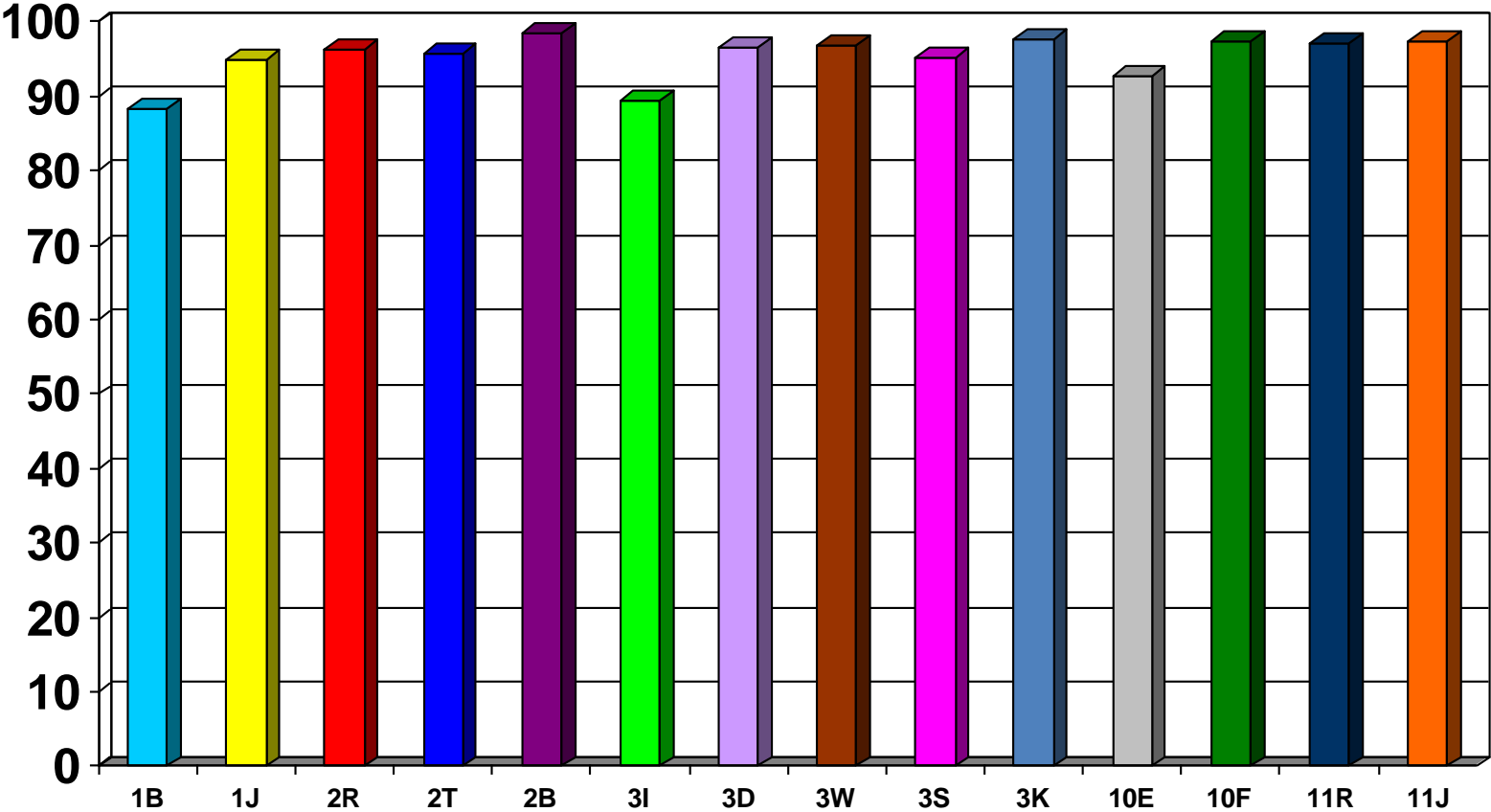


# Weekly Attendance by Class w/e 7th December 2012



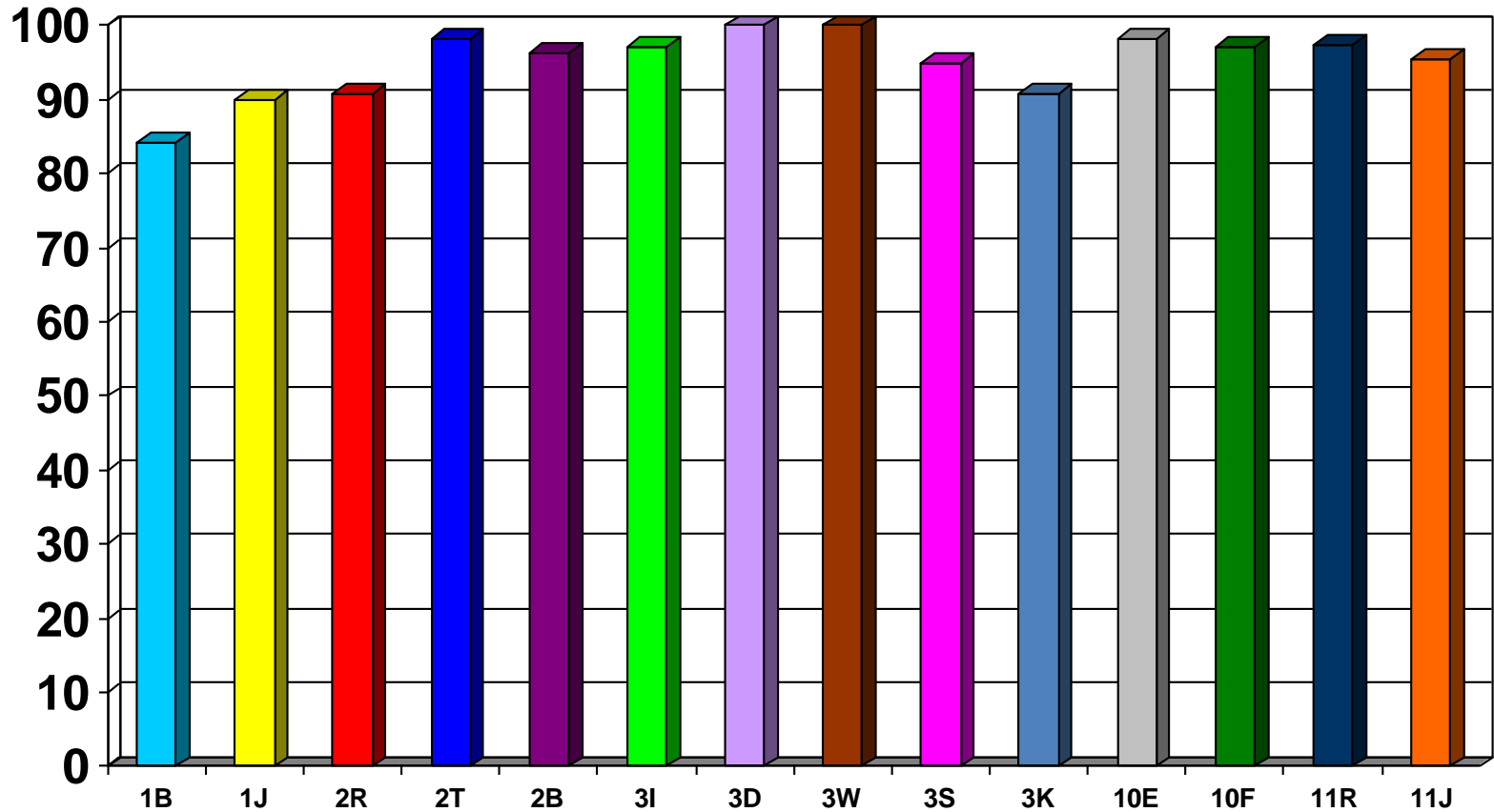
# Monthly Attendance by Class

## November 2012

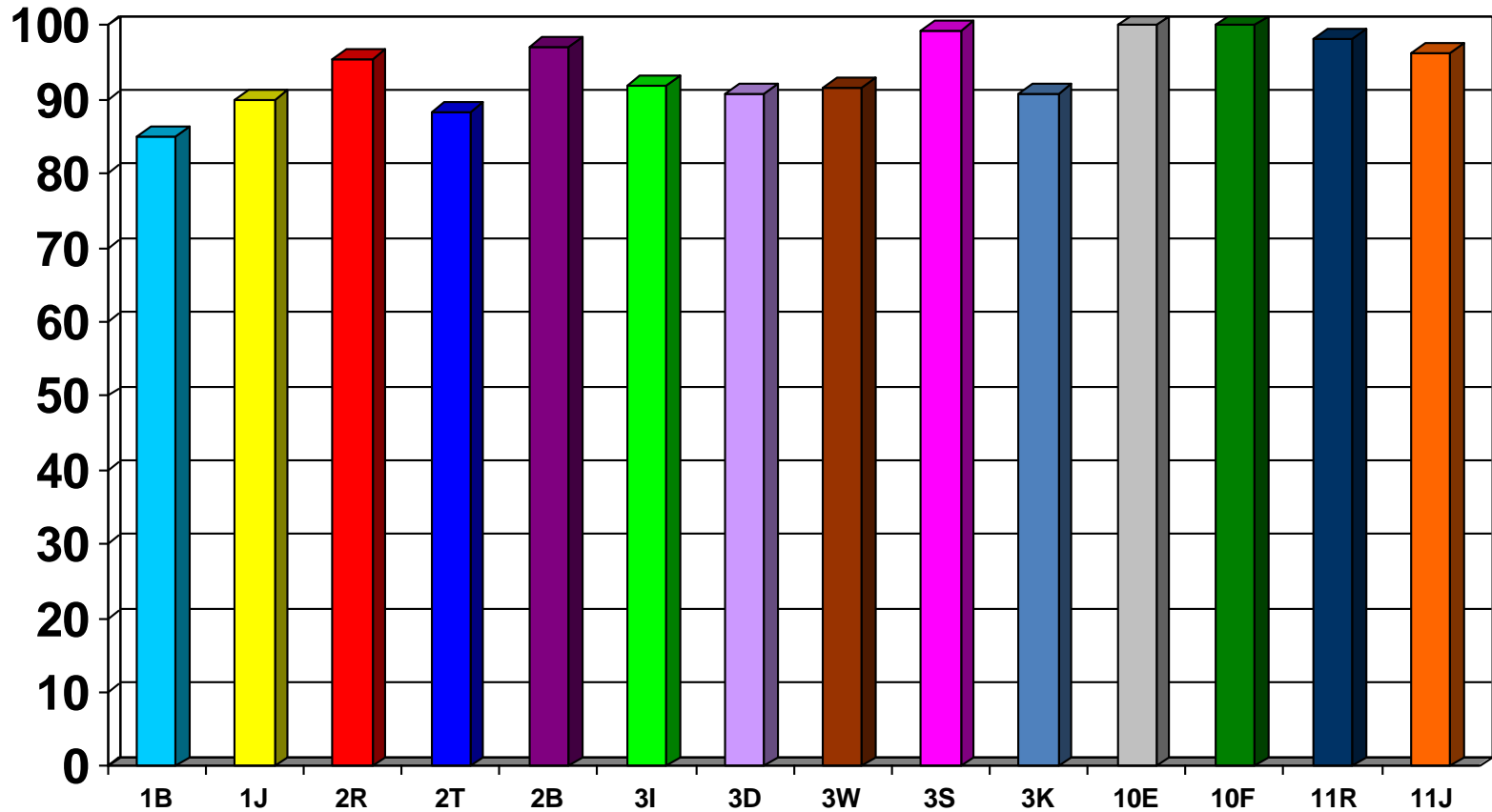




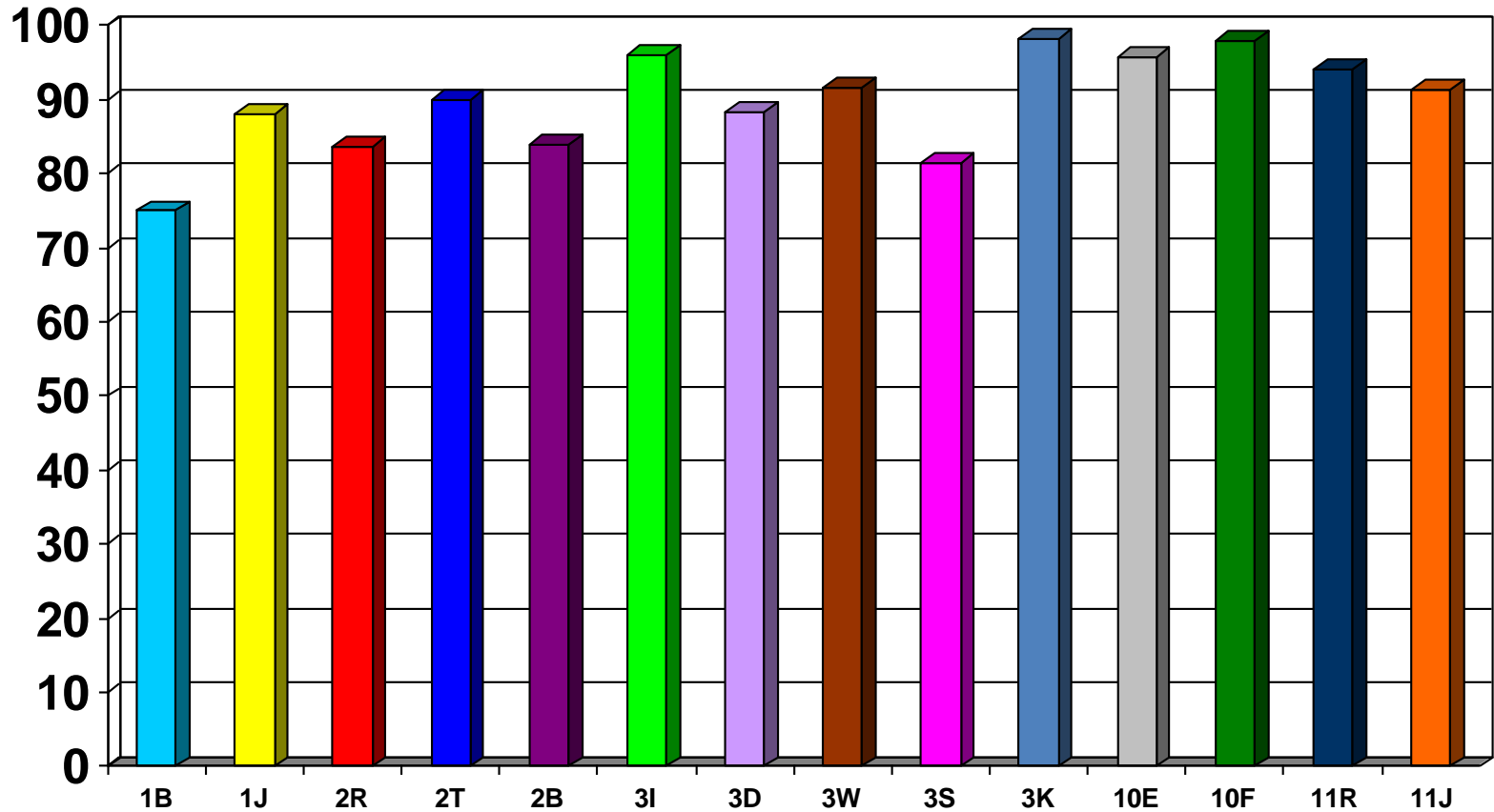
# Weekly Attendance by Class w/e 14th December 2012



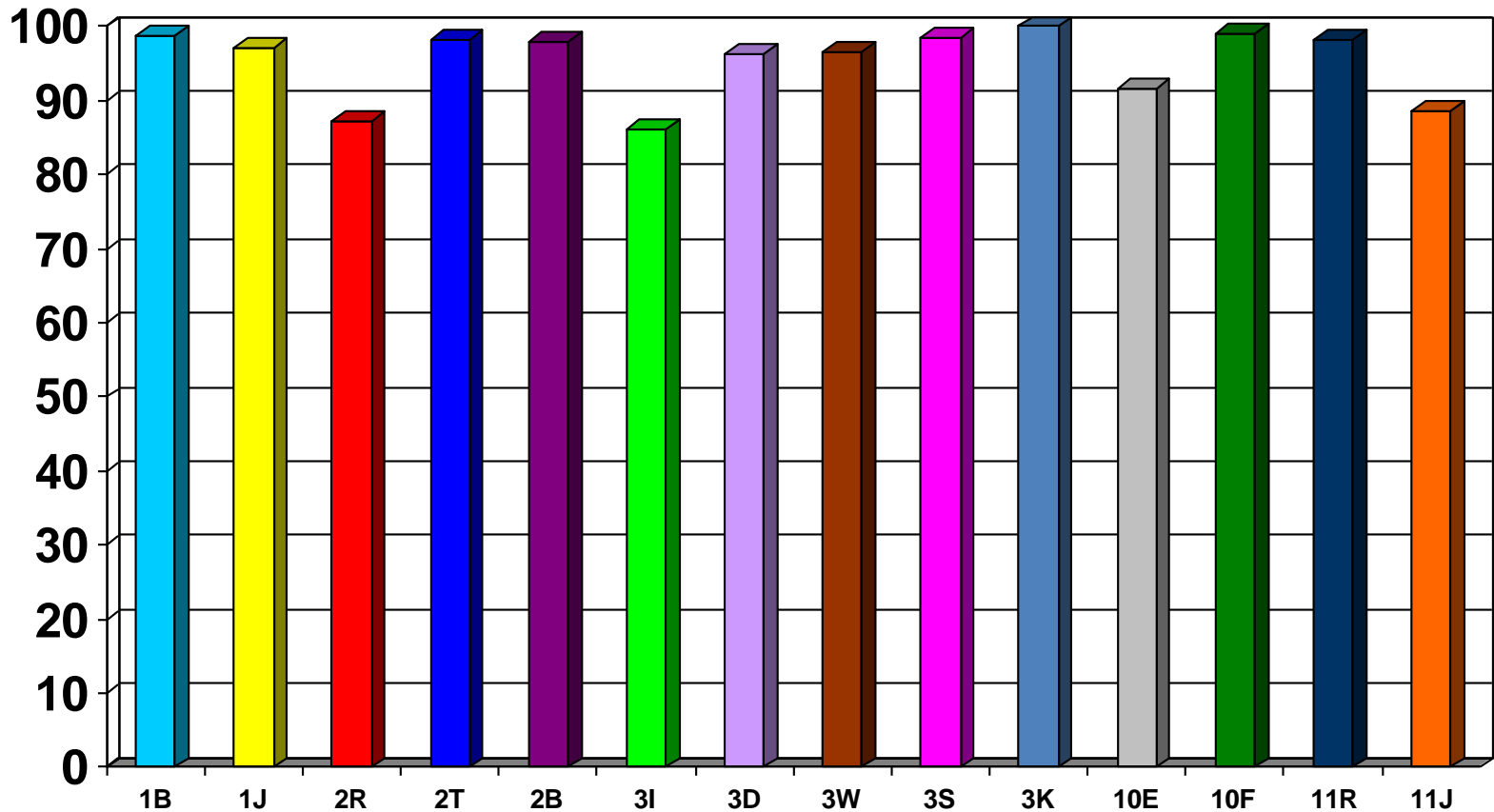
# Weekly Attendance by Class w/e 11<sup>th</sup> January 2013



# Weekly Attendance by Class w/e 25th January 2013

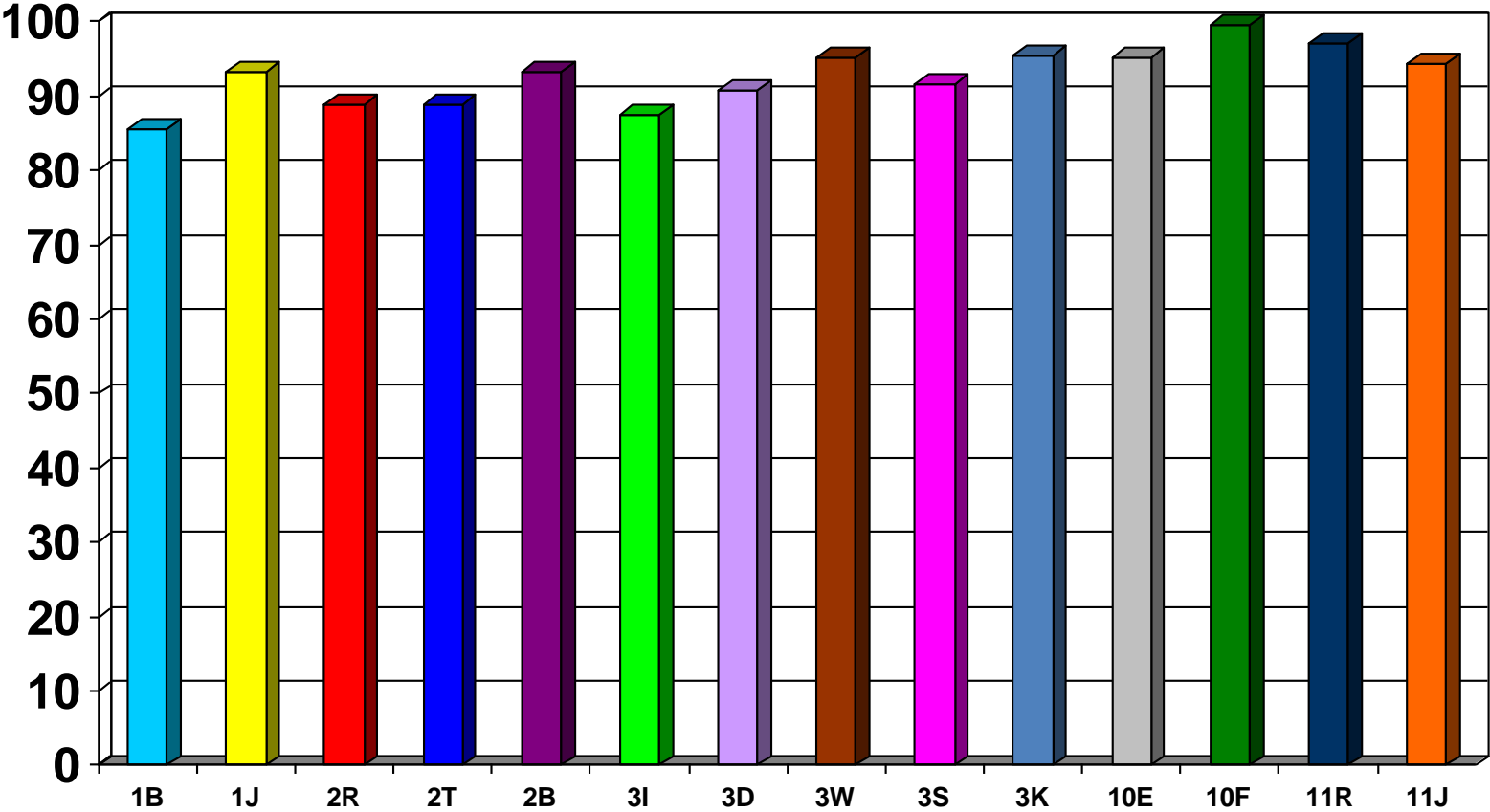


# Weekly Attendance by Class w/e 1<sup>st</sup> February 2013

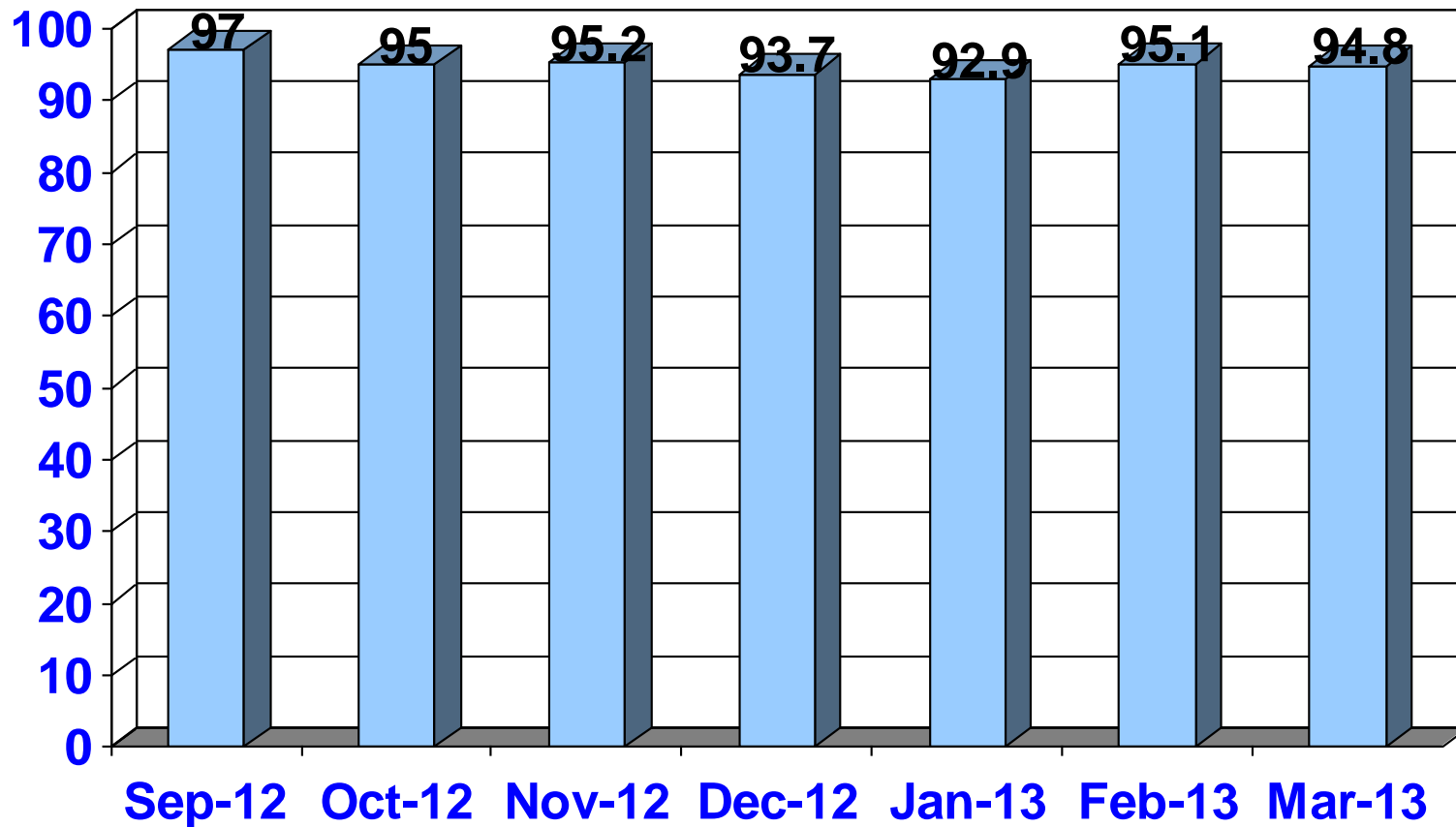


# Monthly Attendance by Class

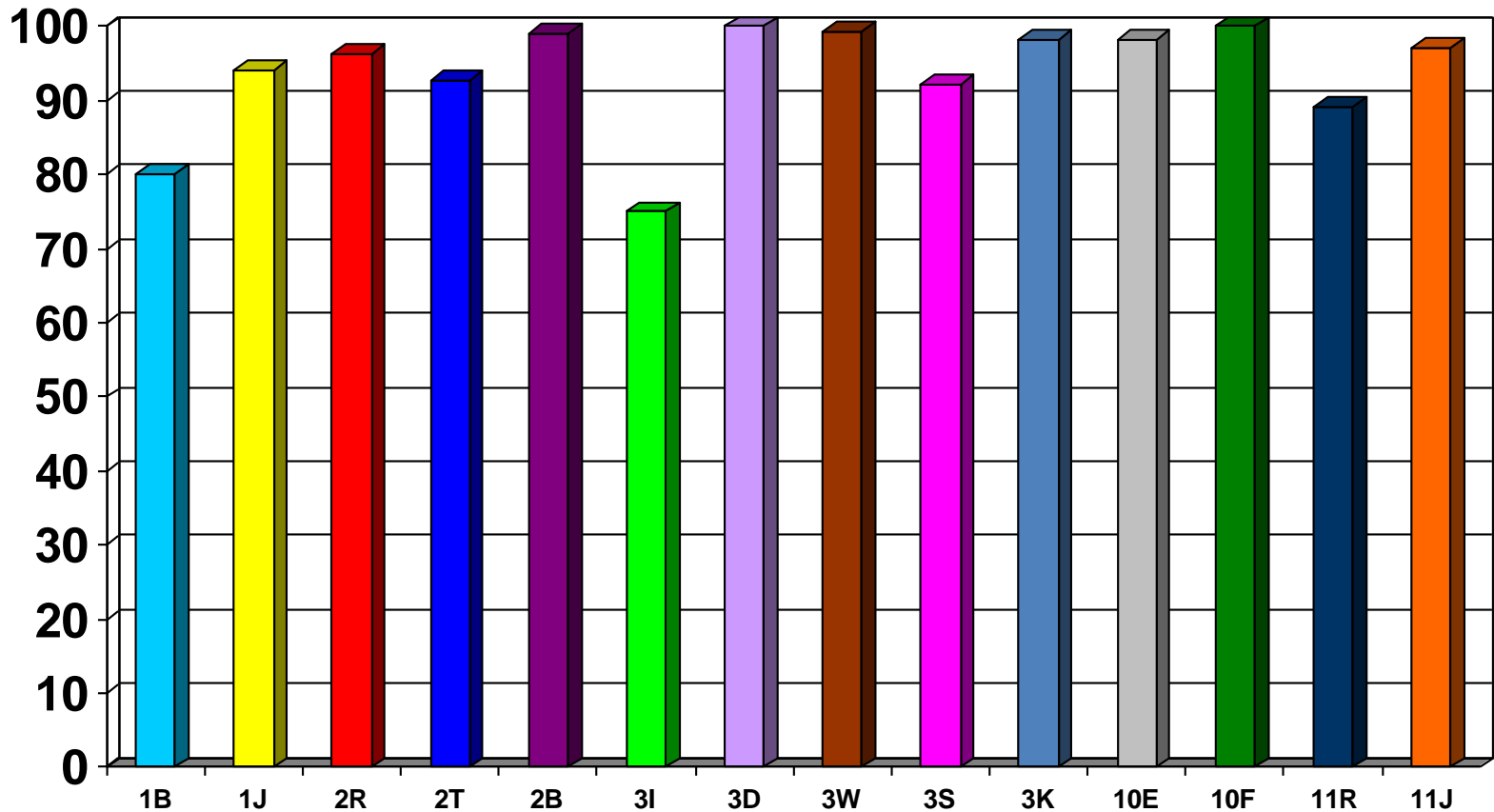
## January 2013



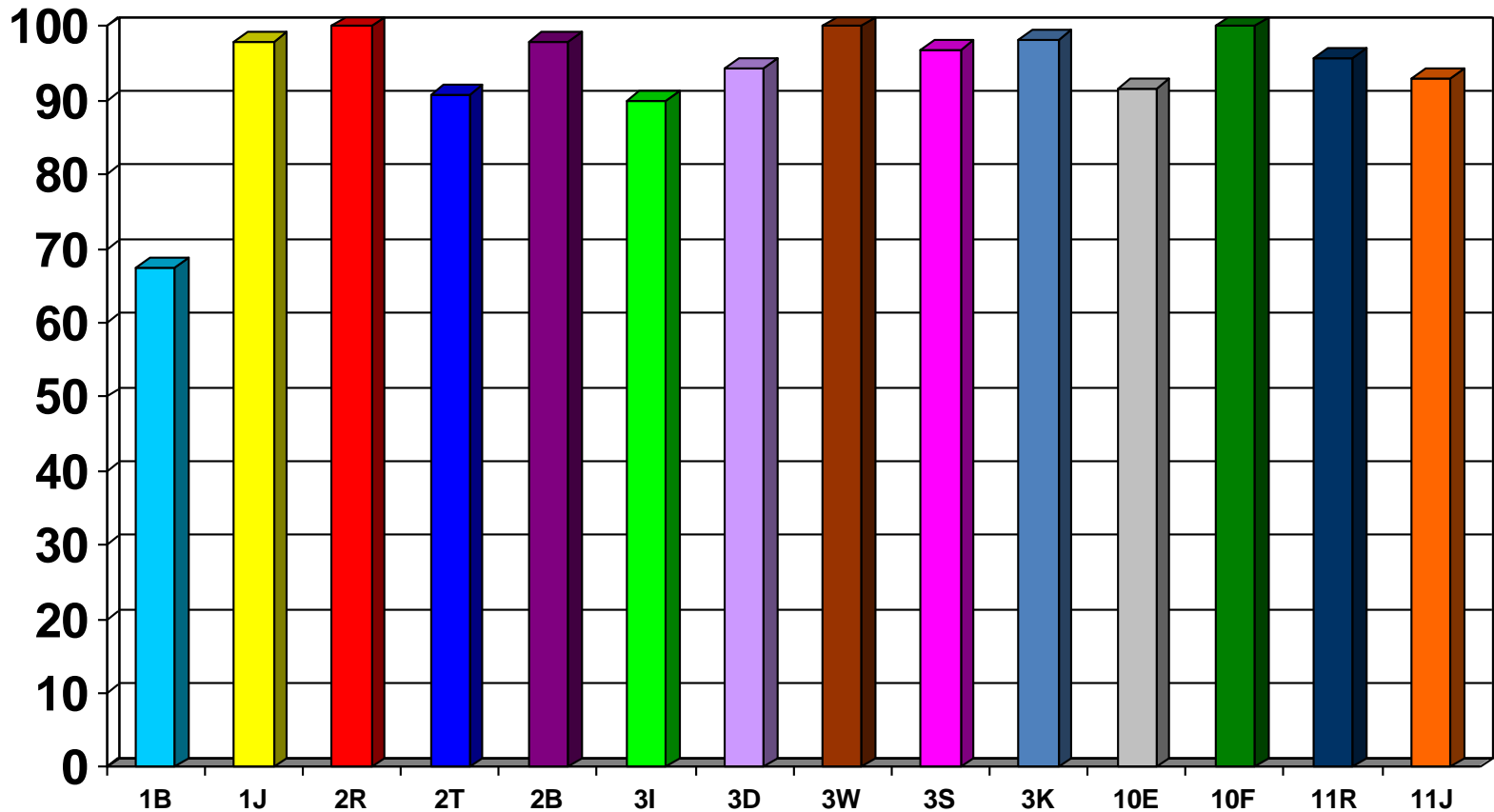
# Whole School Monthly Attendance 2012 -2013



# Weekly Attendance by Class w/e 8th February 2013

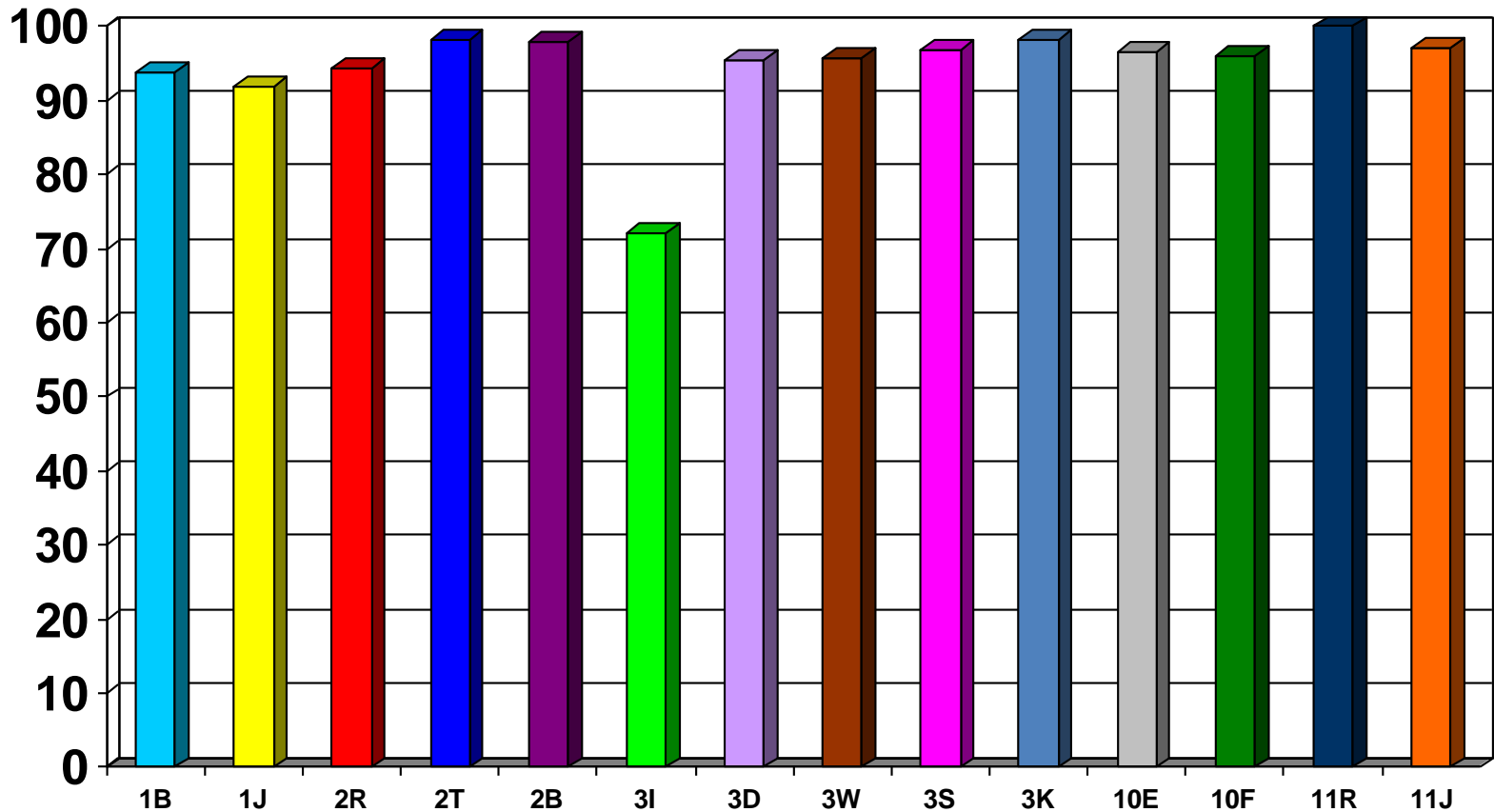


# Weekly Attendance by Class w/e 15th February 2013



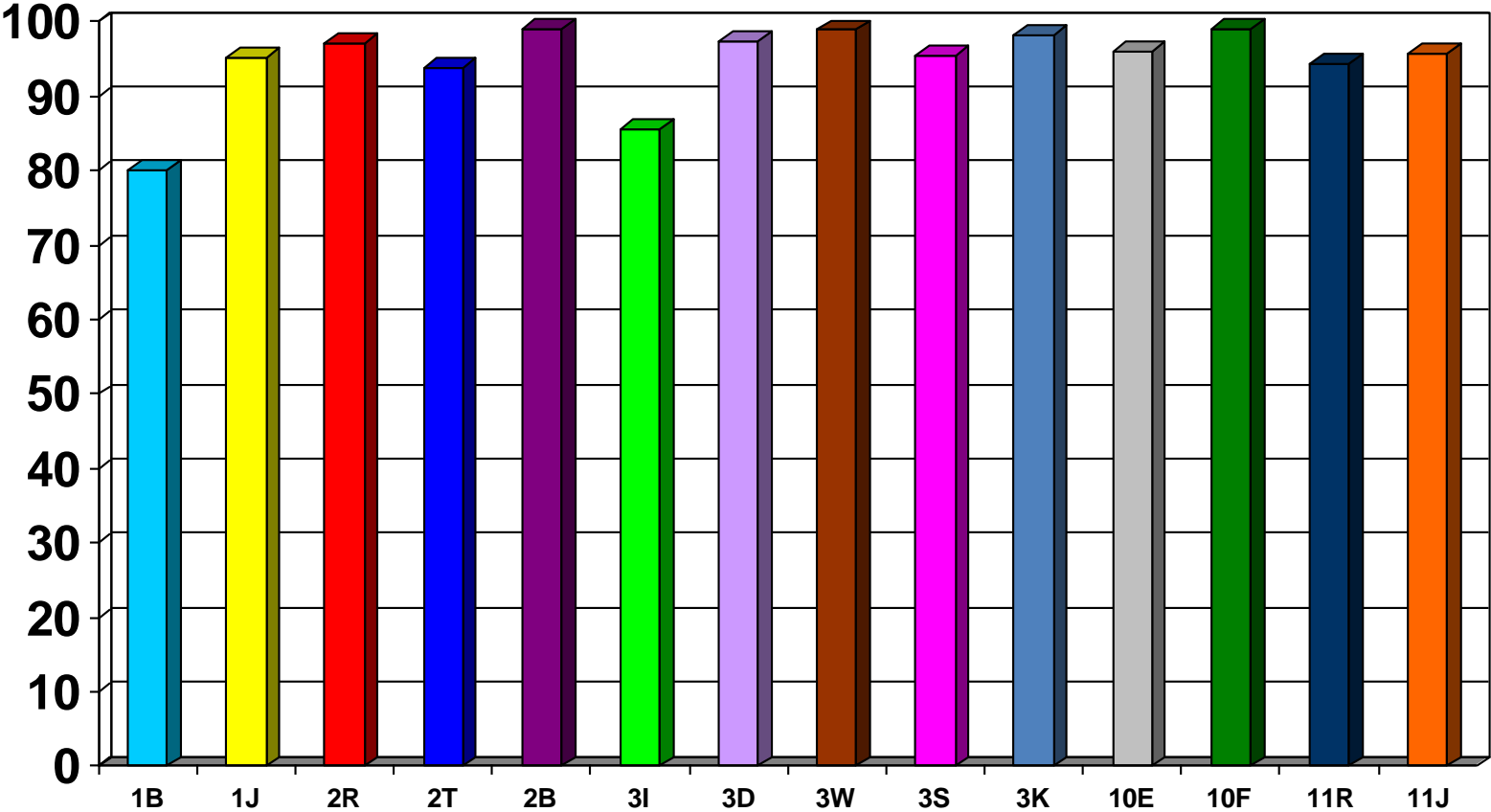


# Weekly Attendance by Class w/e 1<sup>st</sup> March 2013

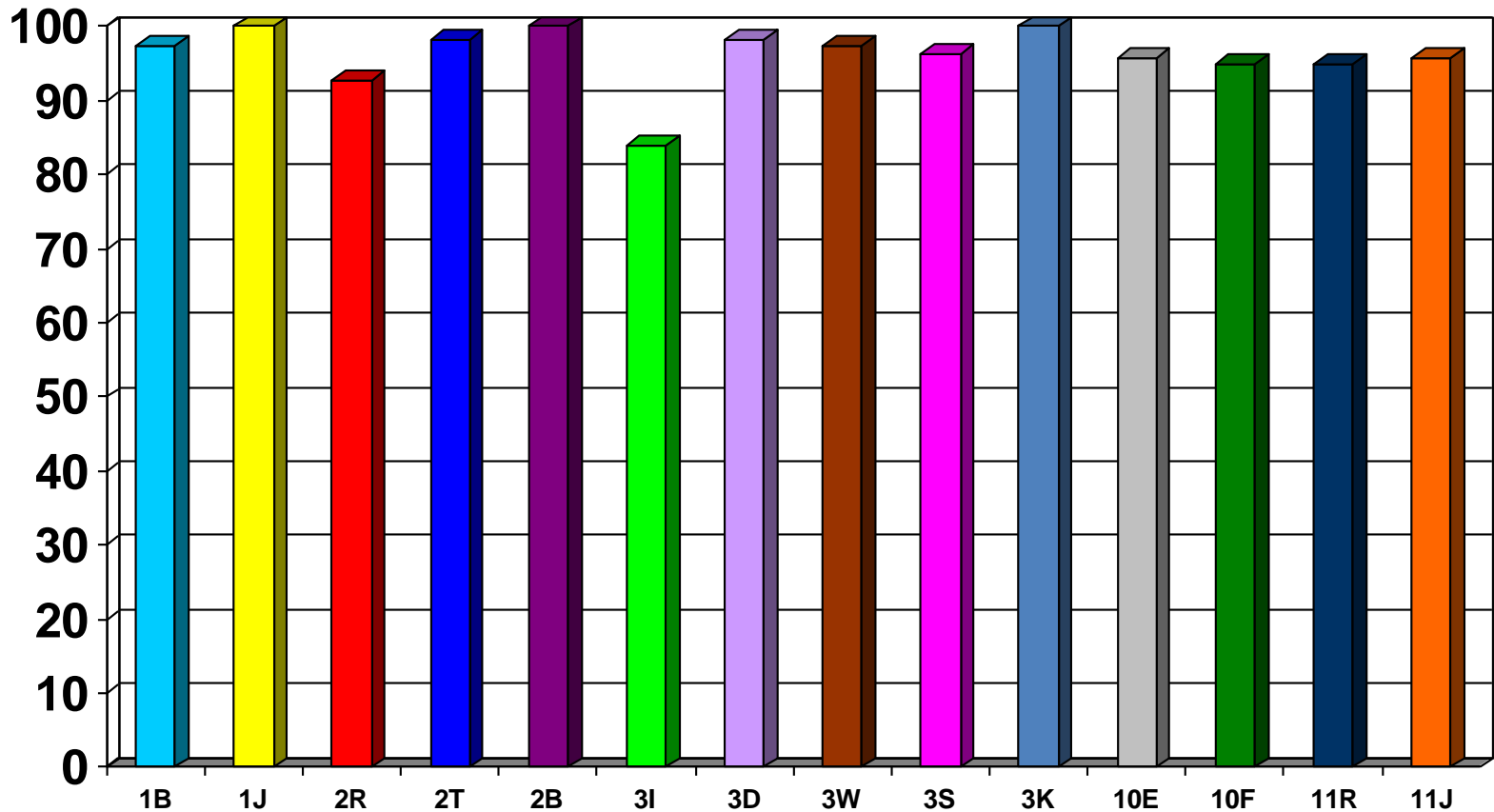


# Monthly Attendance by Class

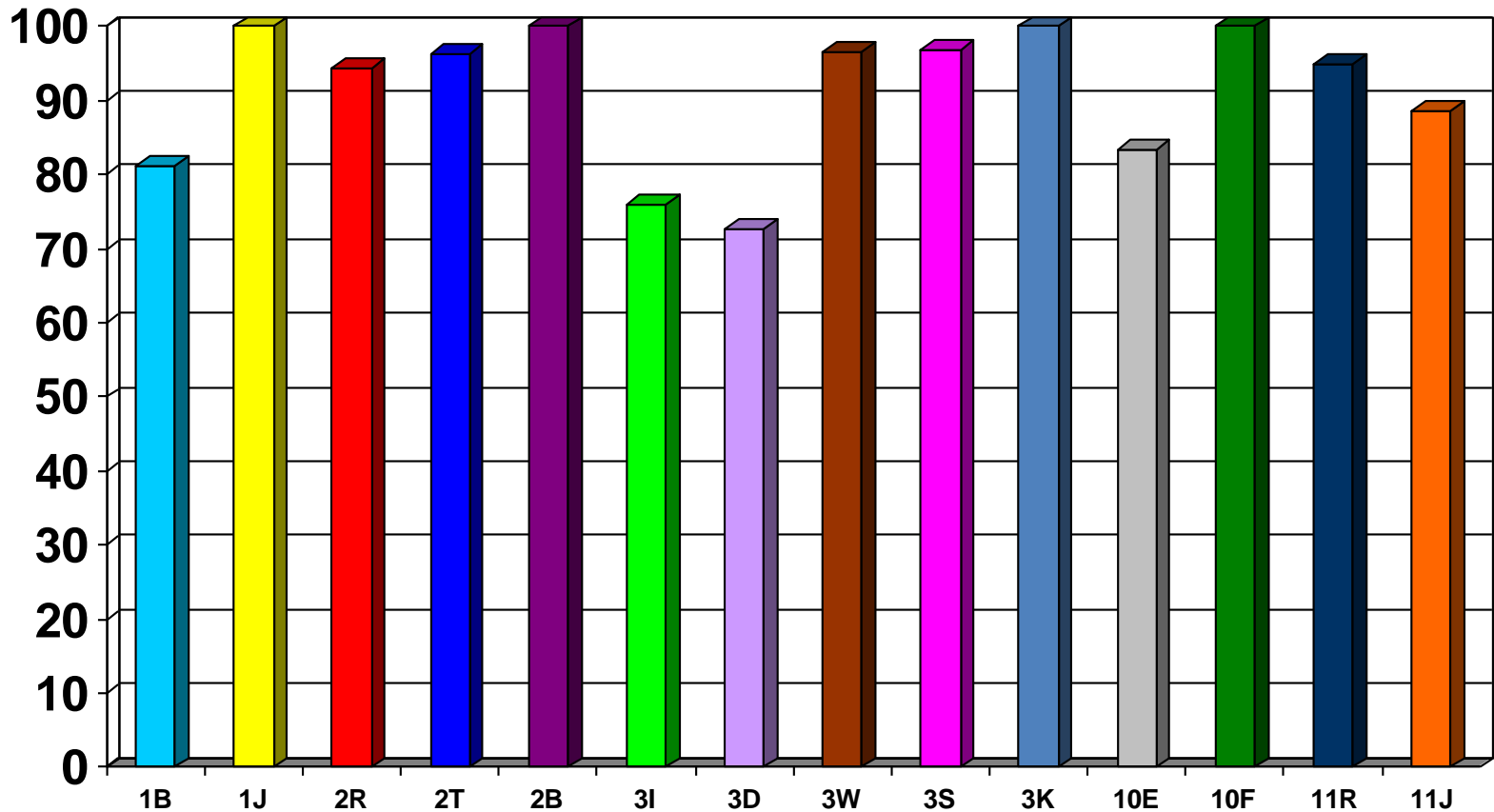
## February 2013



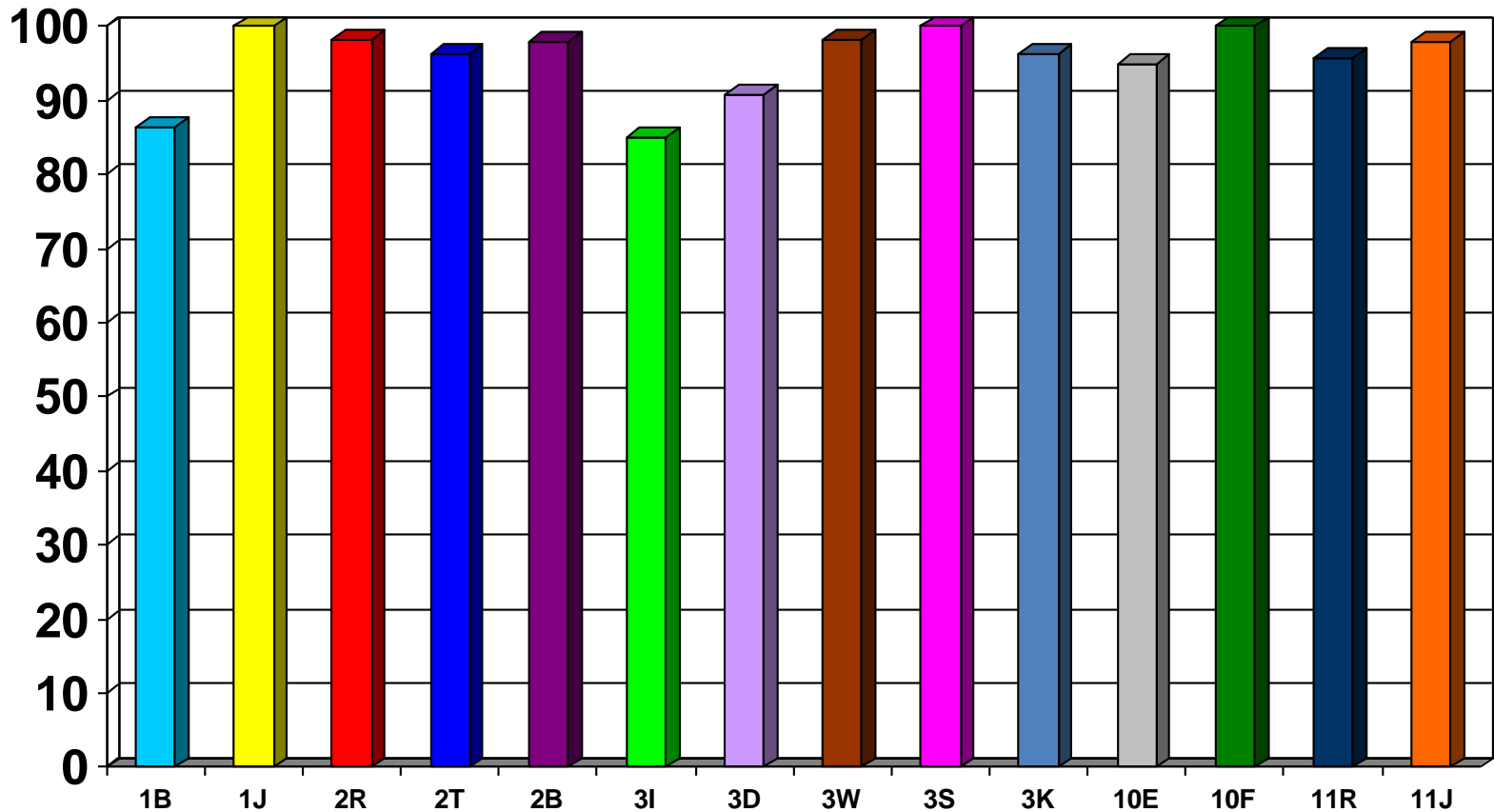
# Weekly Attendance by Class w/e 8<sup>st</sup> March 2013



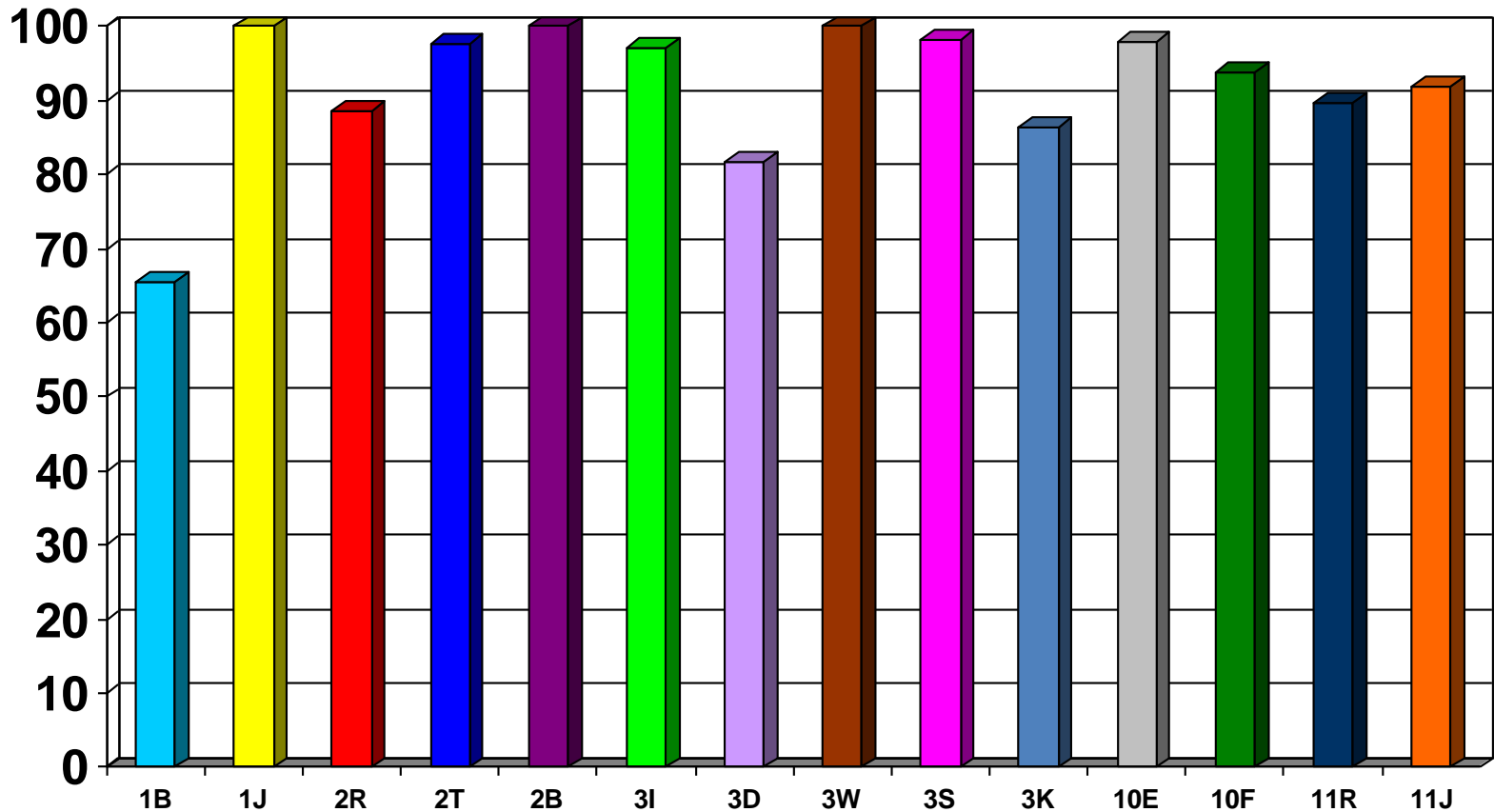
# Weekly Attendance by Class w/e 15<sup>th</sup> March 2013



# Weekly Attendance by Class w/e 22nd March 2013

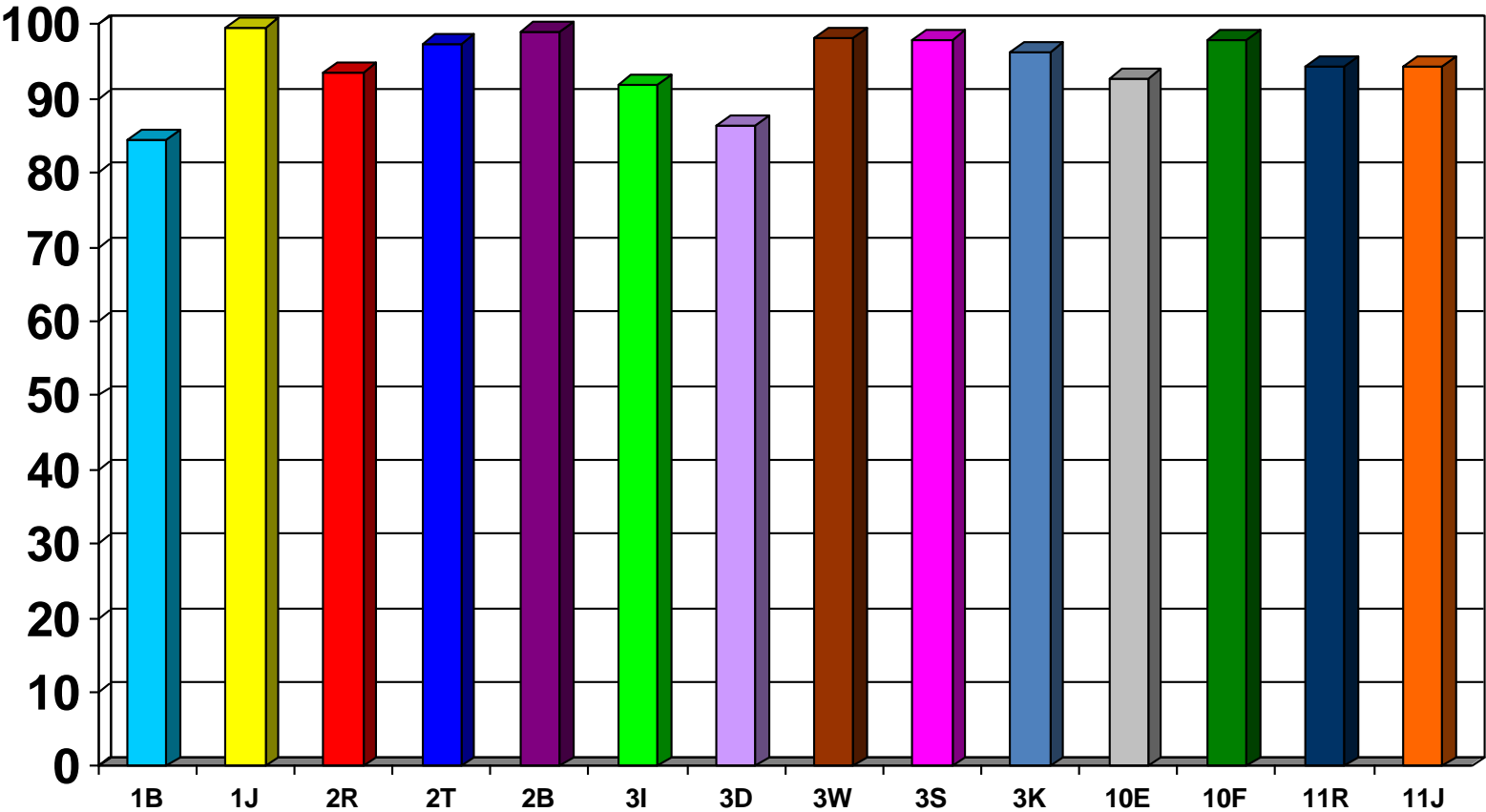


# Weekly Attendance by Class w/e 28<sup>th</sup> March 2013

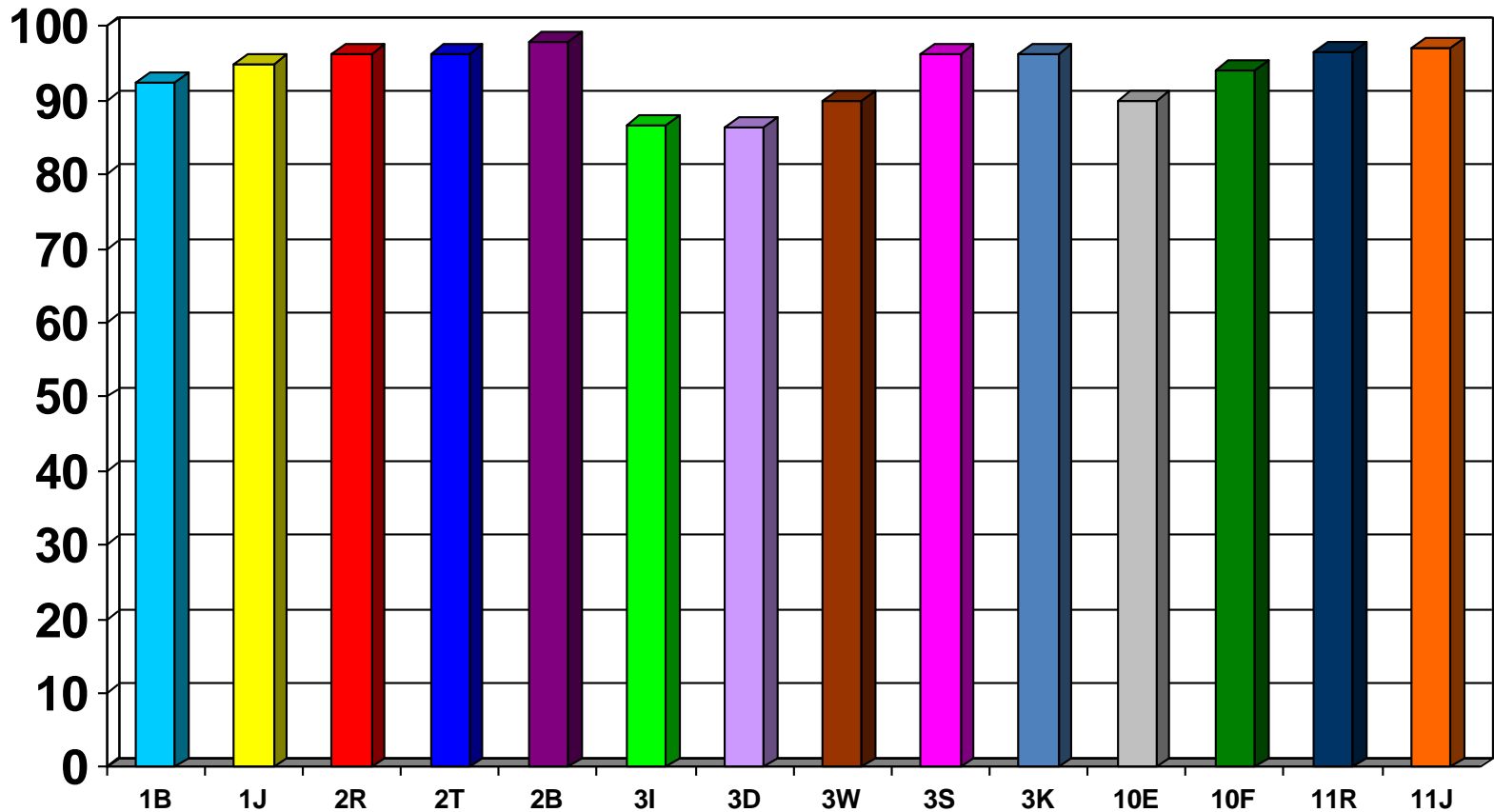


# Monthly Attendance by Class

## March 2013

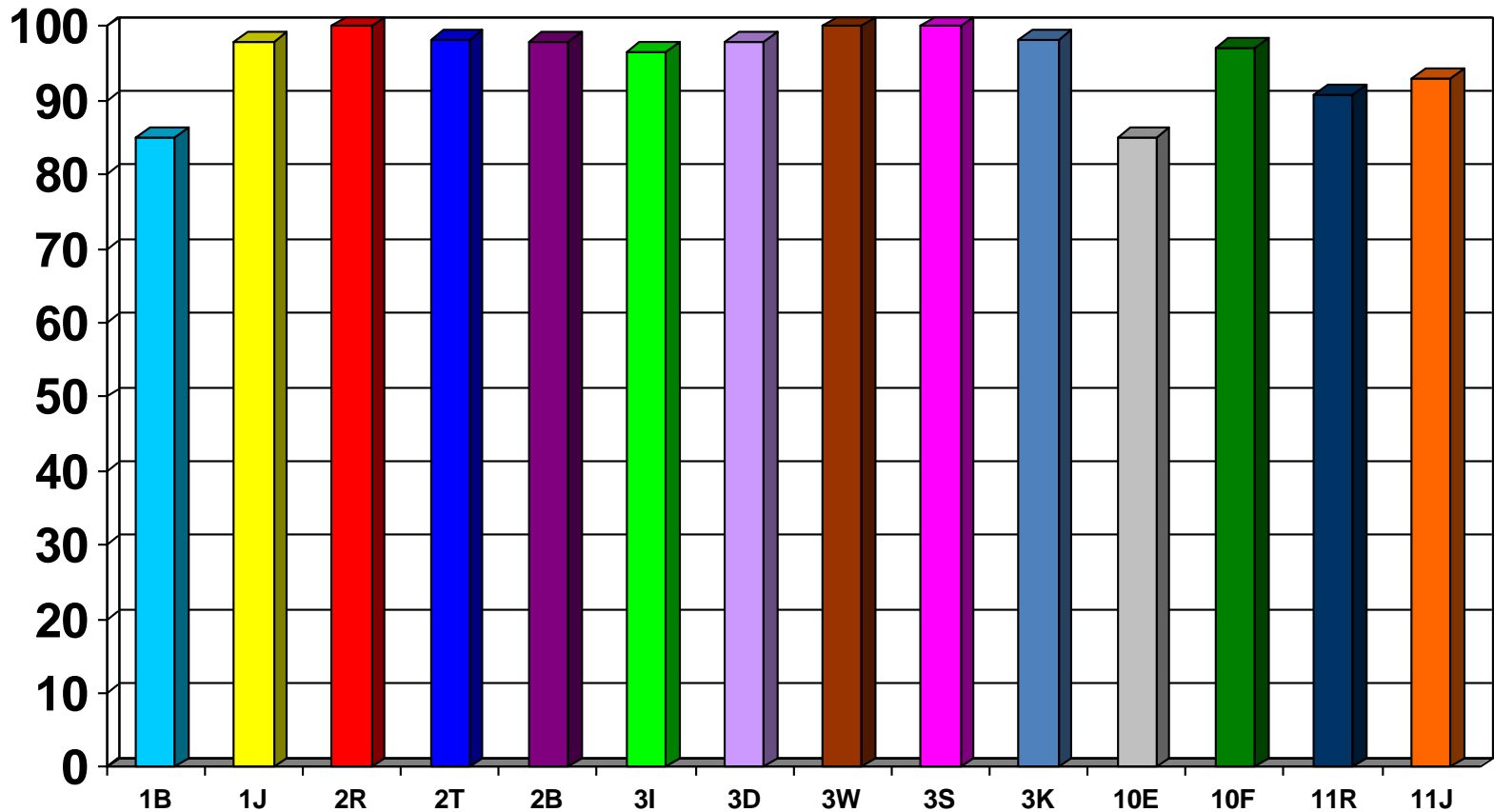


# Weekly Attendance by Class w/e 19<sup>th</sup> April 2013



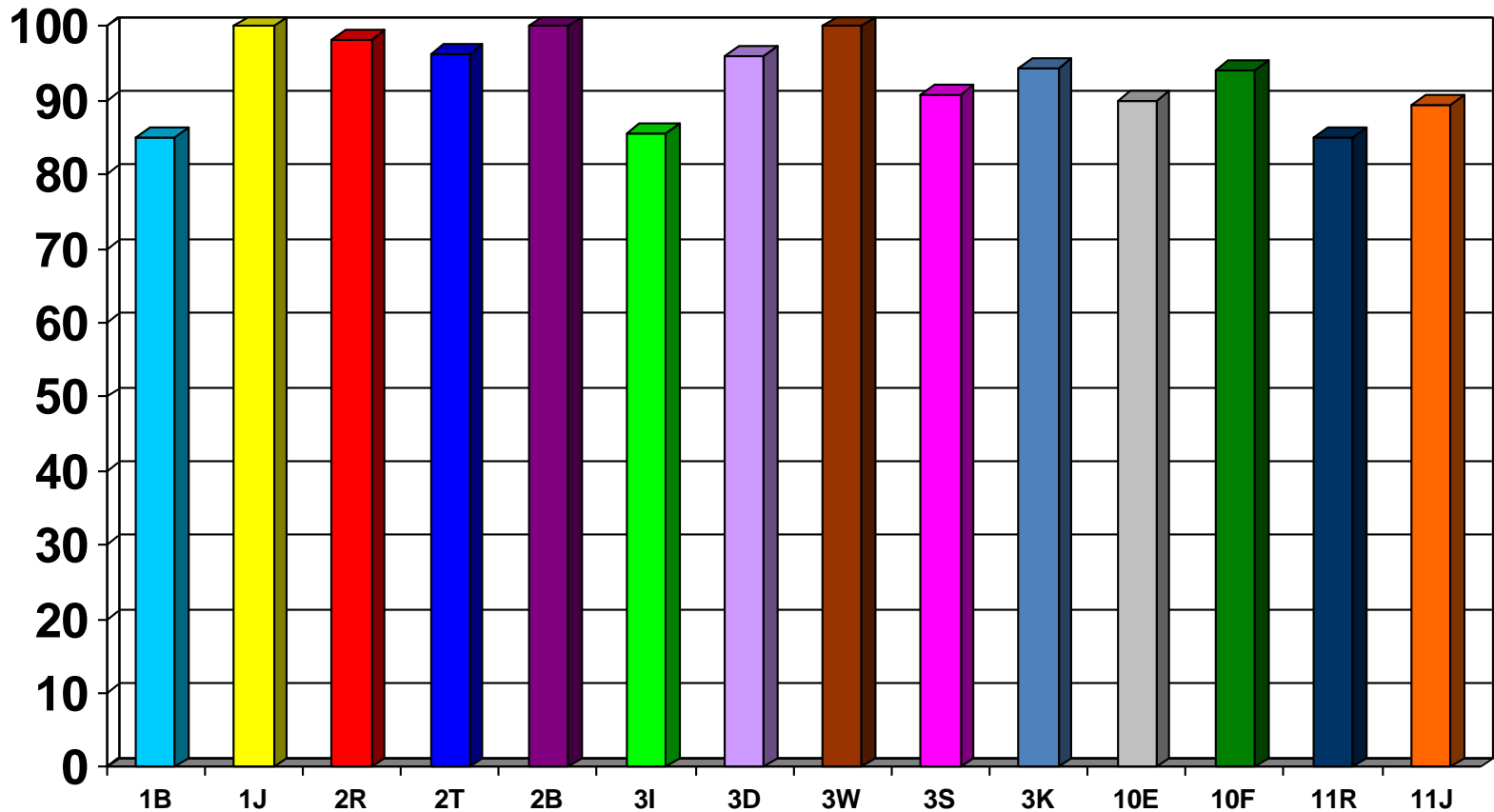


# Weekly Attendance by Class w/e 26<sup>th</sup> April 2013



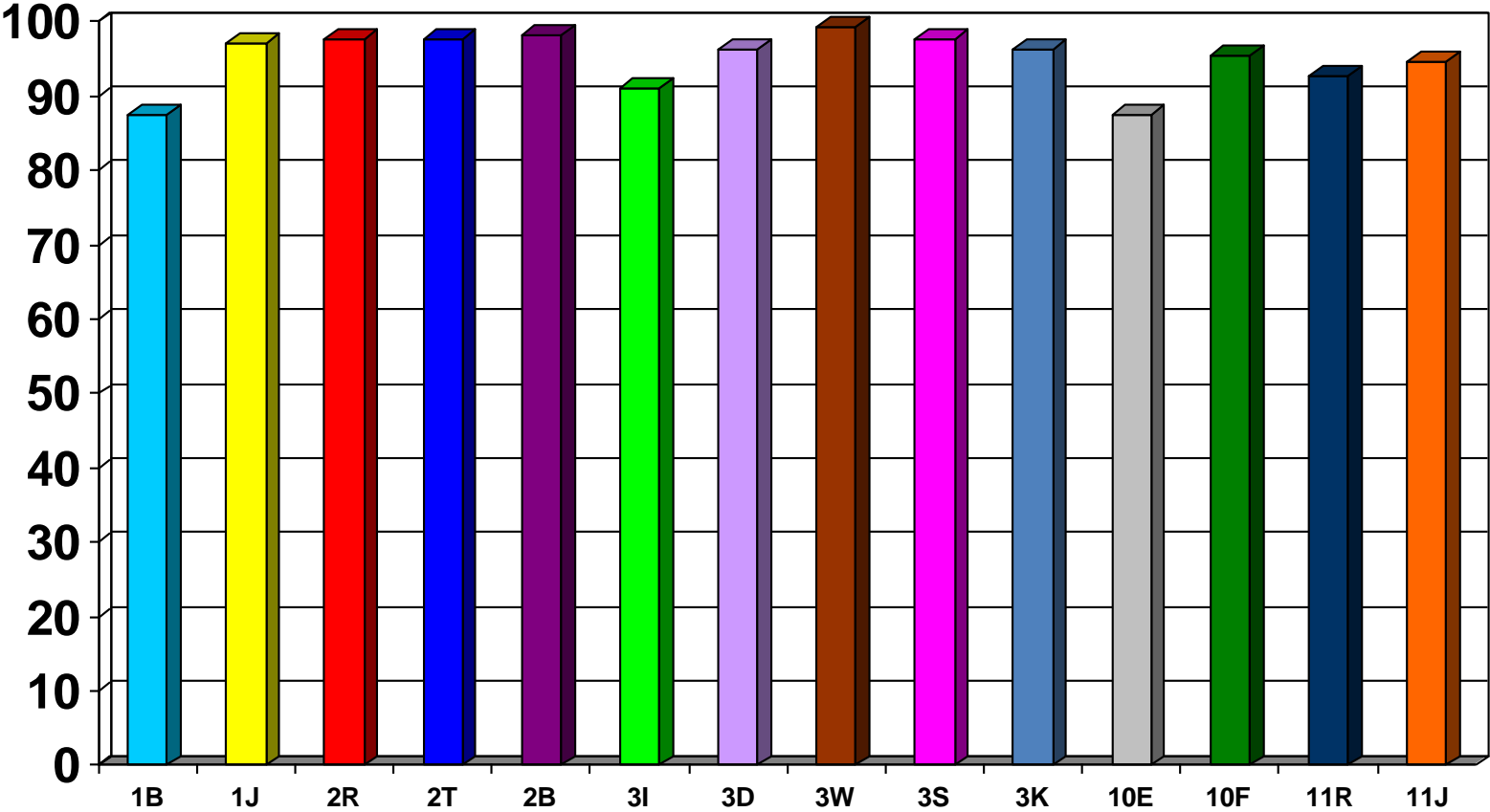
# Weekly Attendance by Class

## w/e 3<sup>rd</sup> May 2013

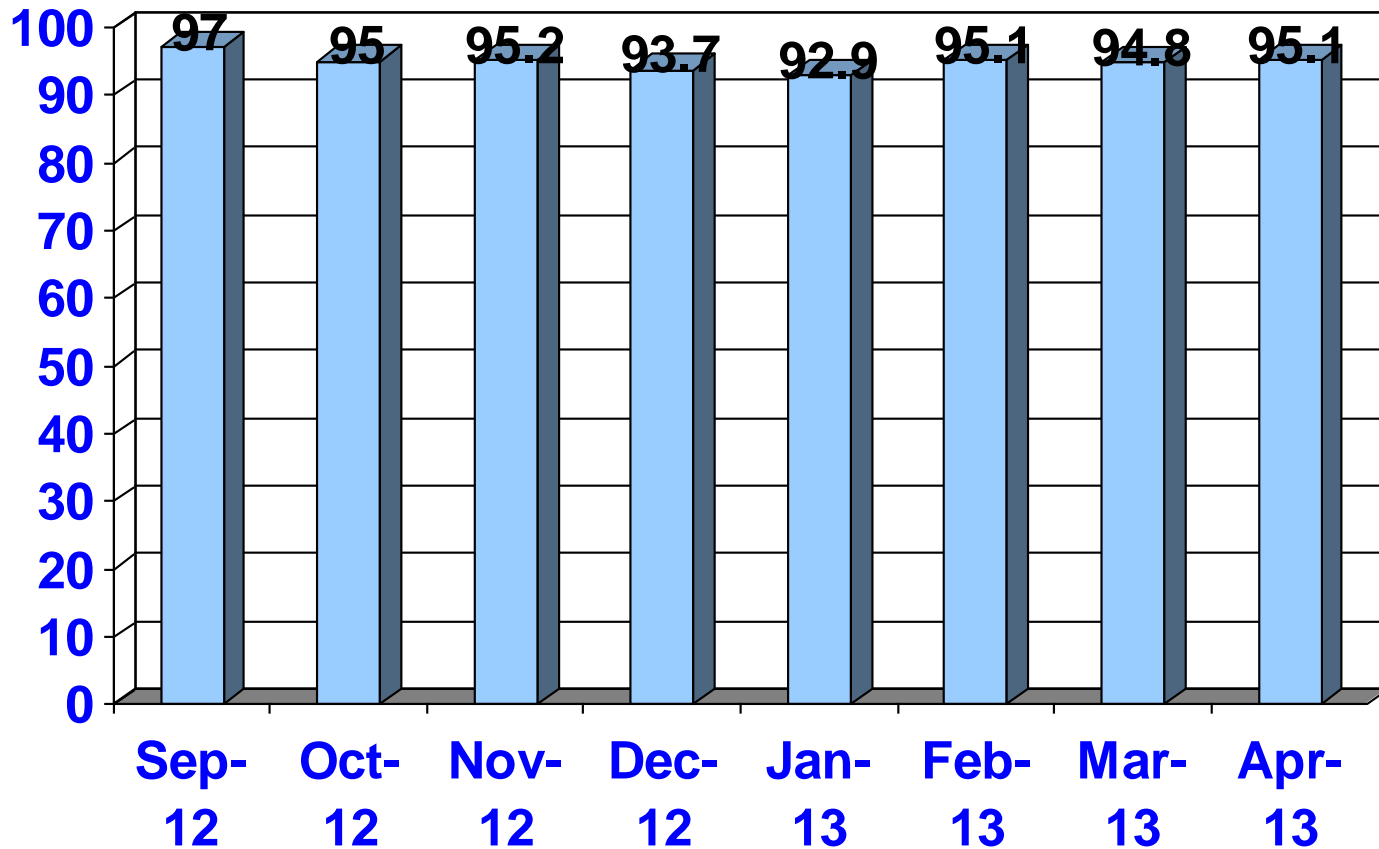


# Monthly Attendance by Class

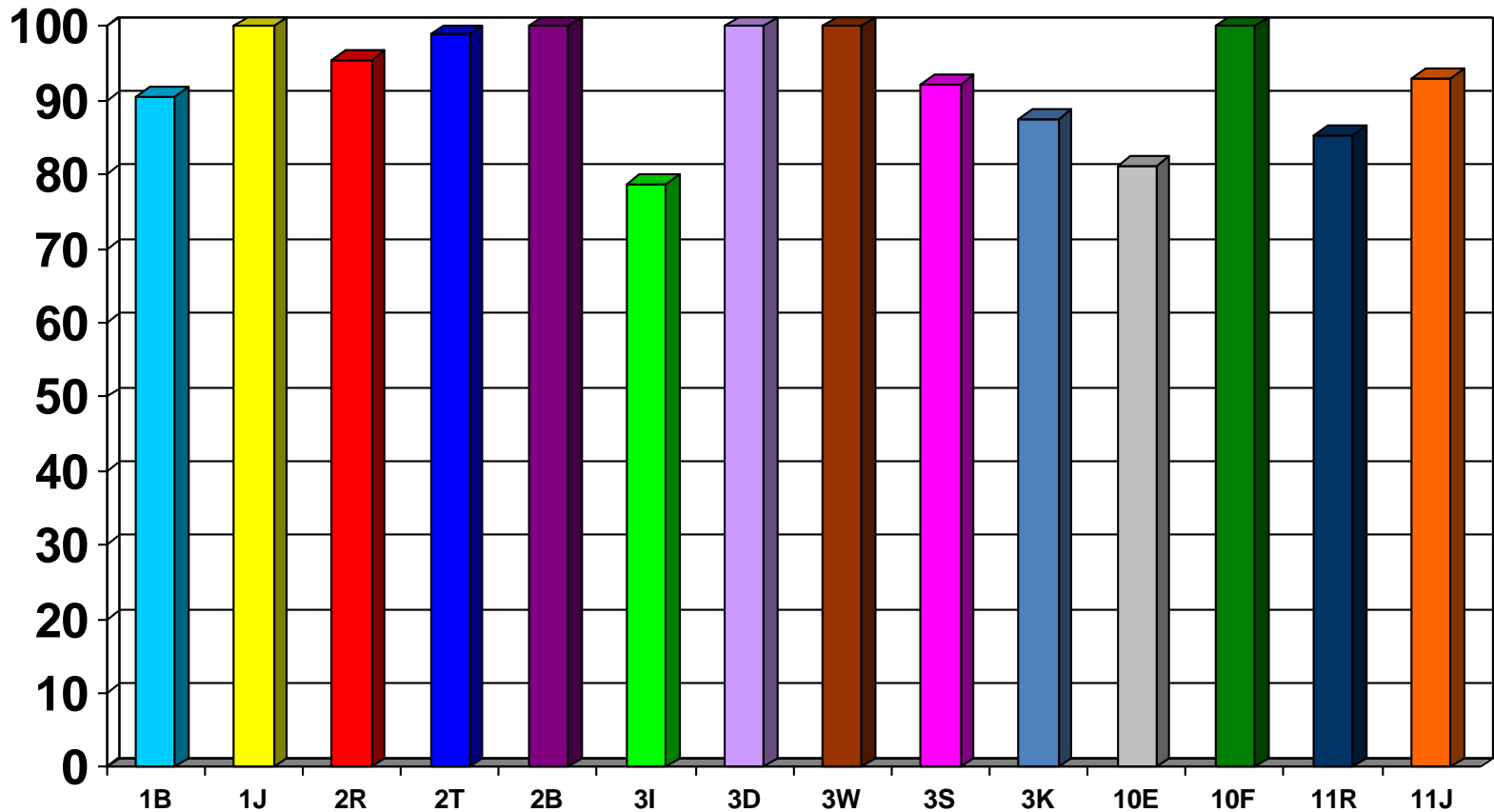
## April 2013



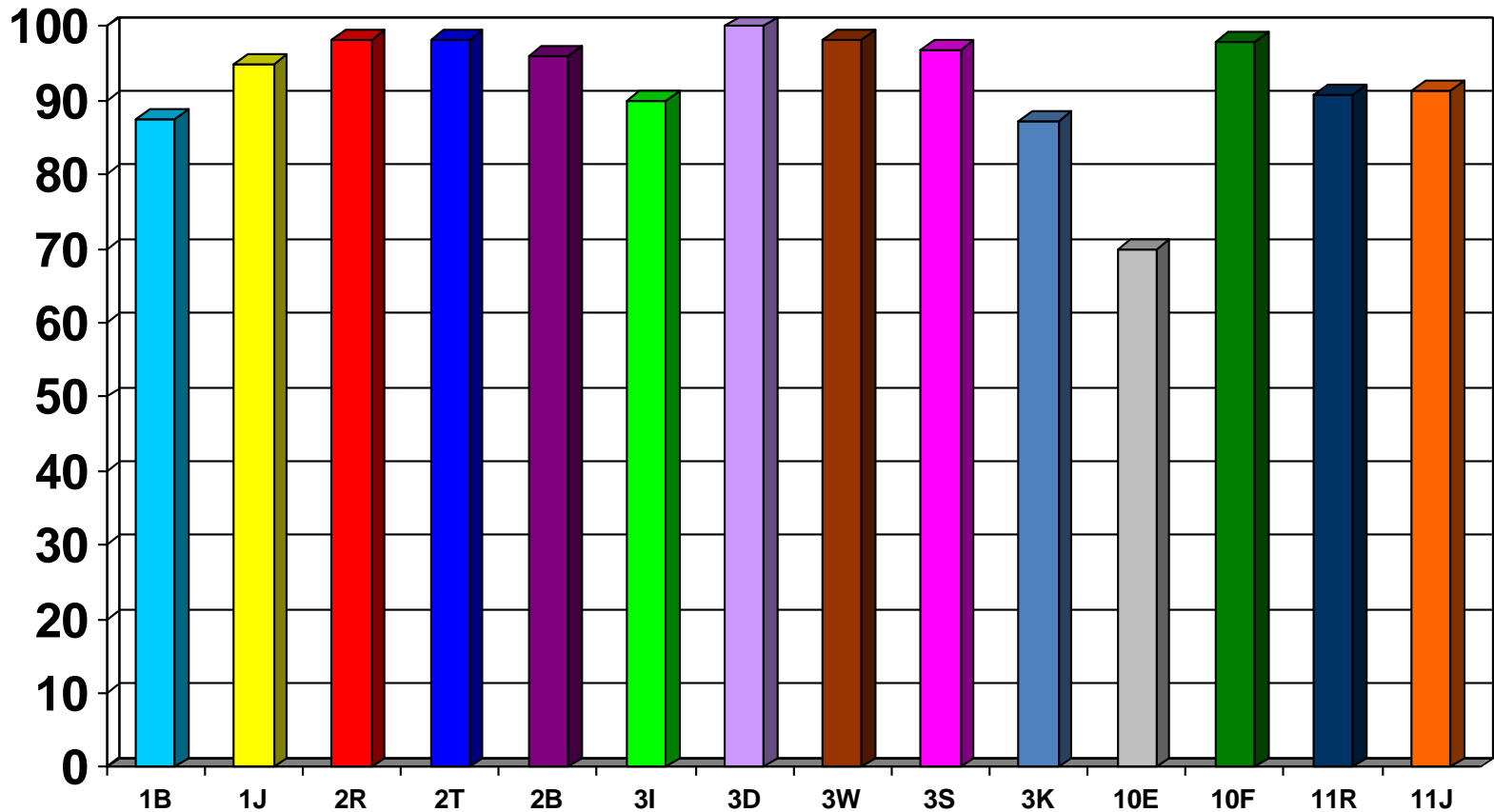
# Whole School Monthly Attendance 2012 -2013



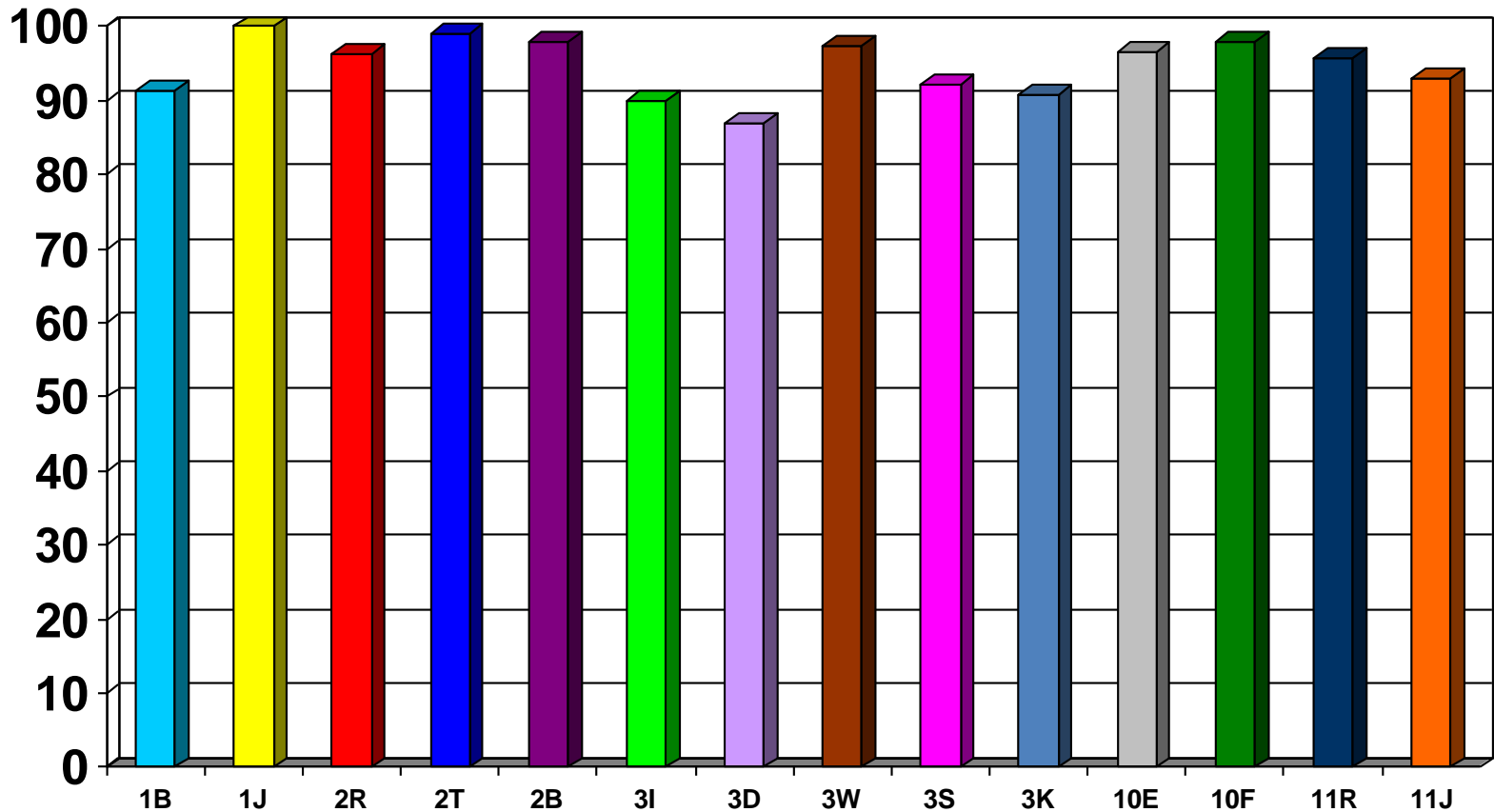
# Weekly Attendance by Class w/e 10<sup>th</sup> May 2013



# Weekly Attendance by Class w/e 17<sup>th</sup> May 2013

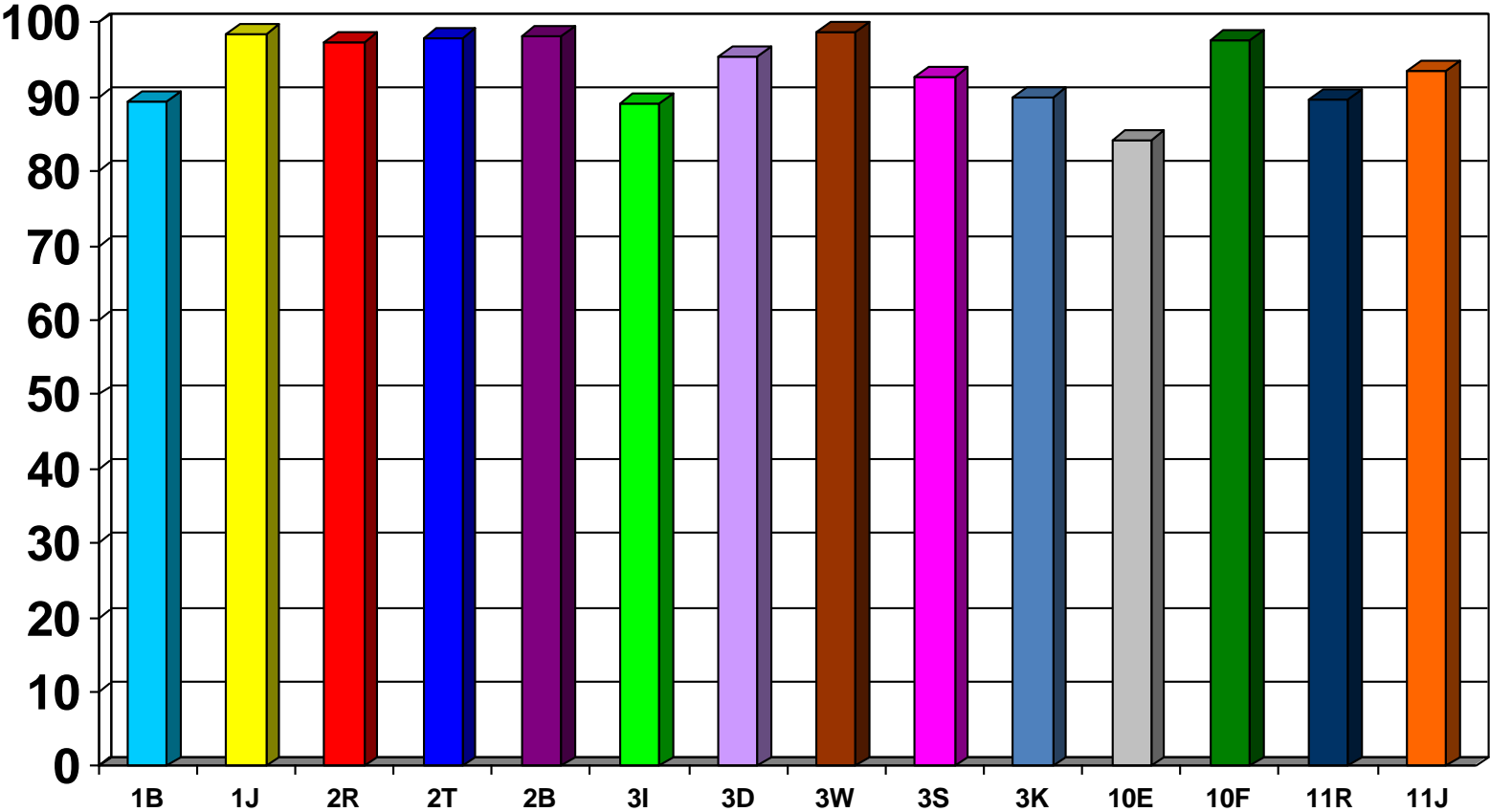


# Weekly Attendance by Class w/e 24<sup>th</sup> May 2013



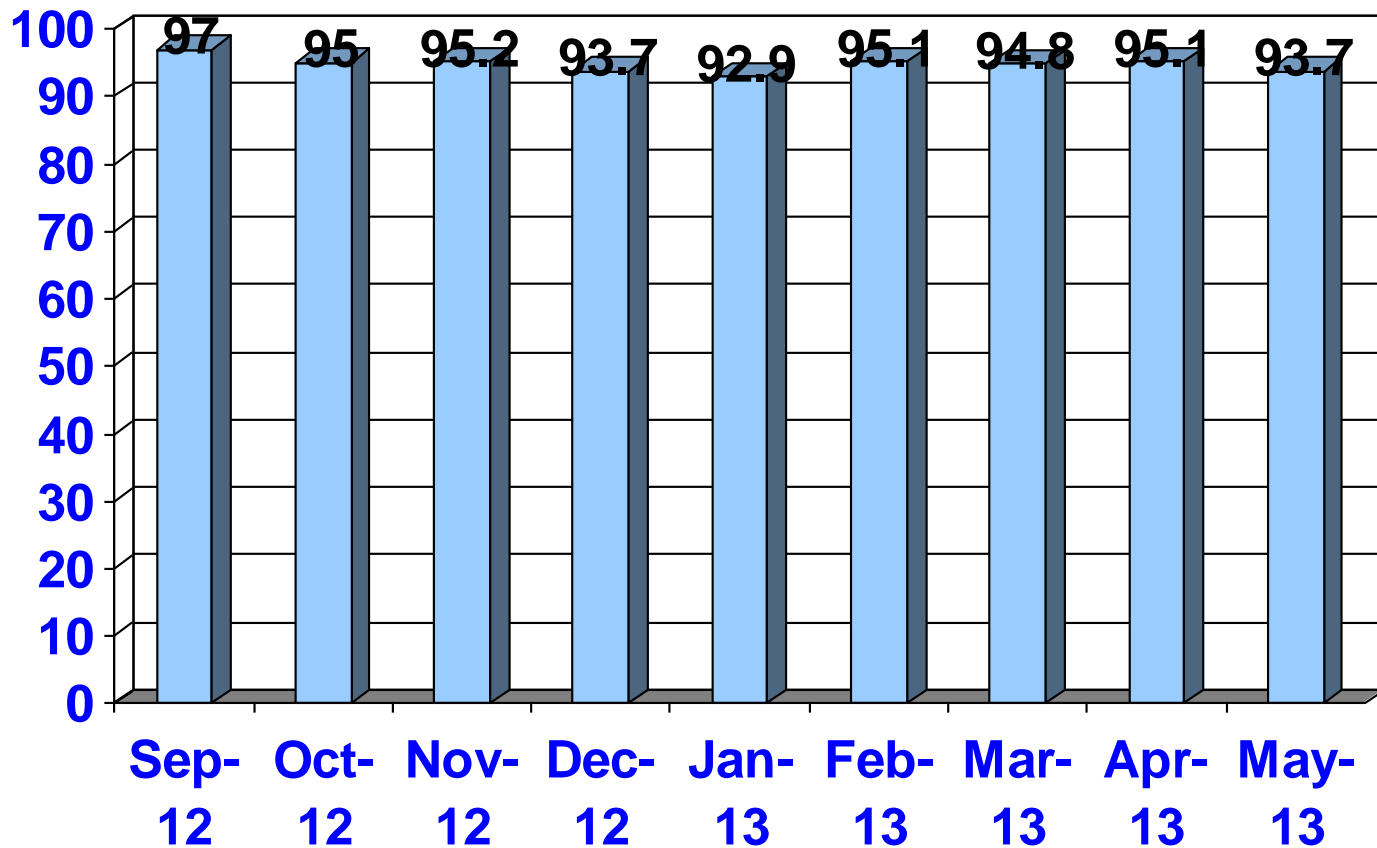
# Monthly Attendance by Class

## May 2013



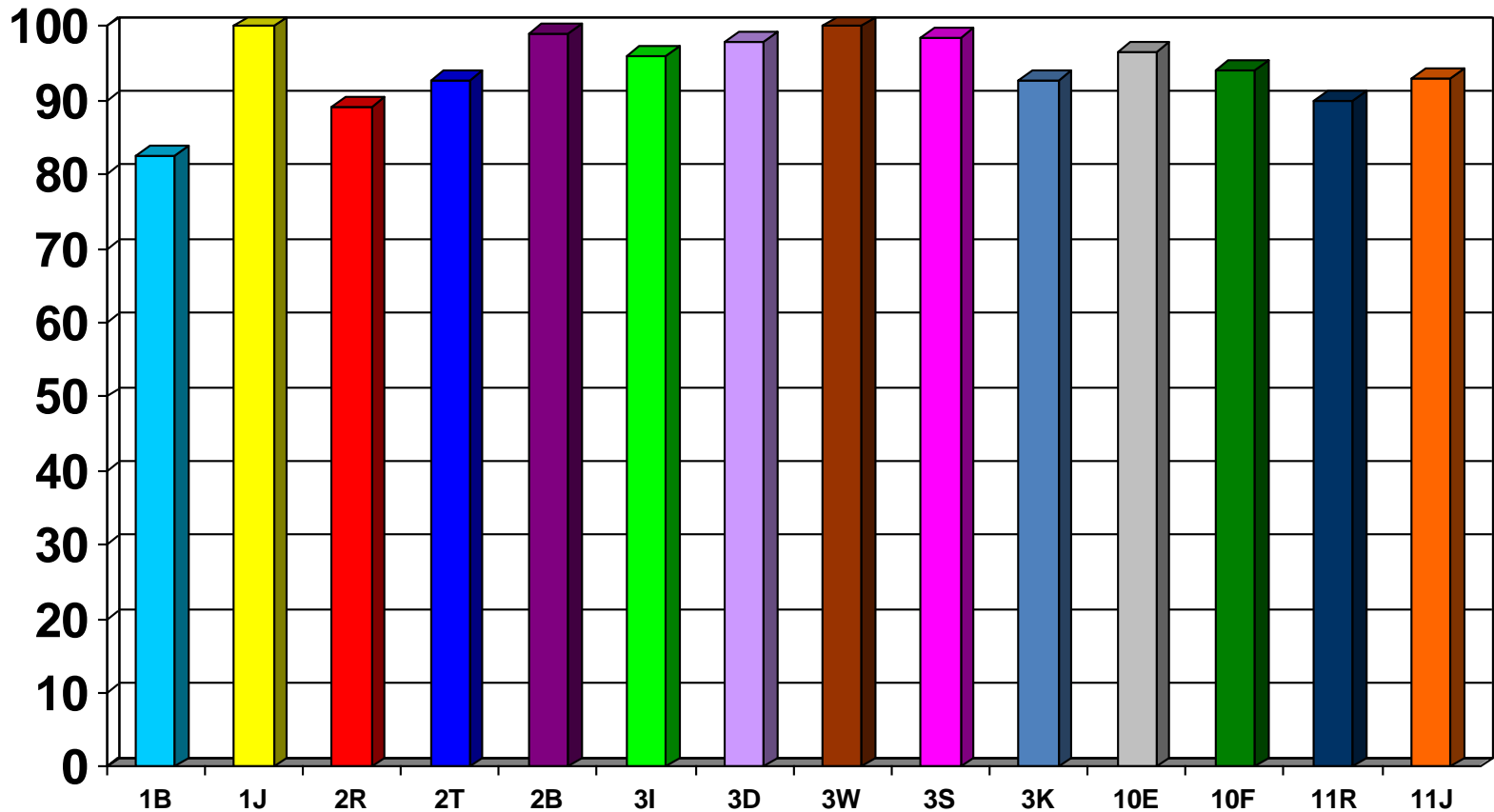


# Whole School Monthly Attendance 2012 -2013

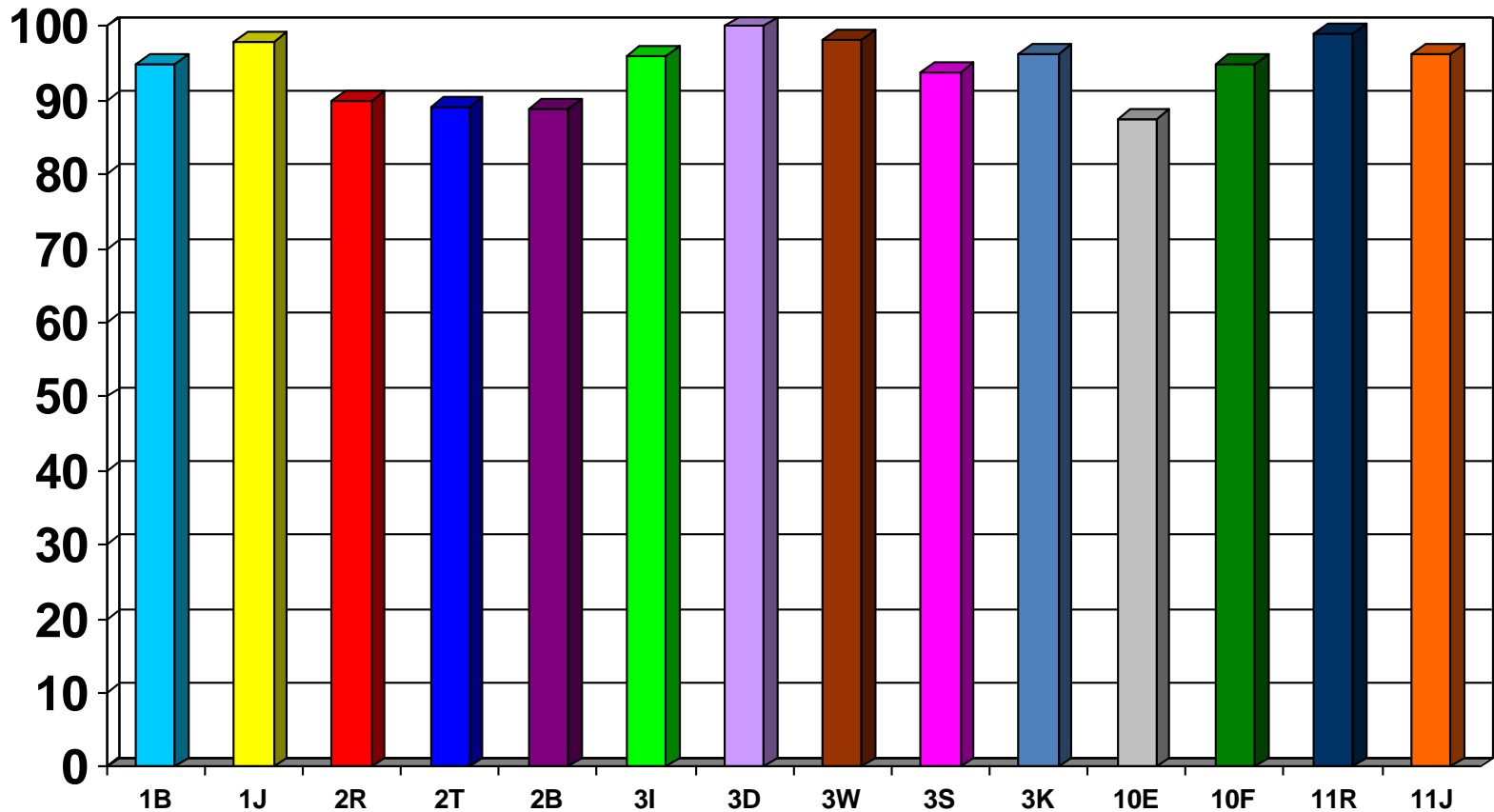


# Weekly Attendance by Class

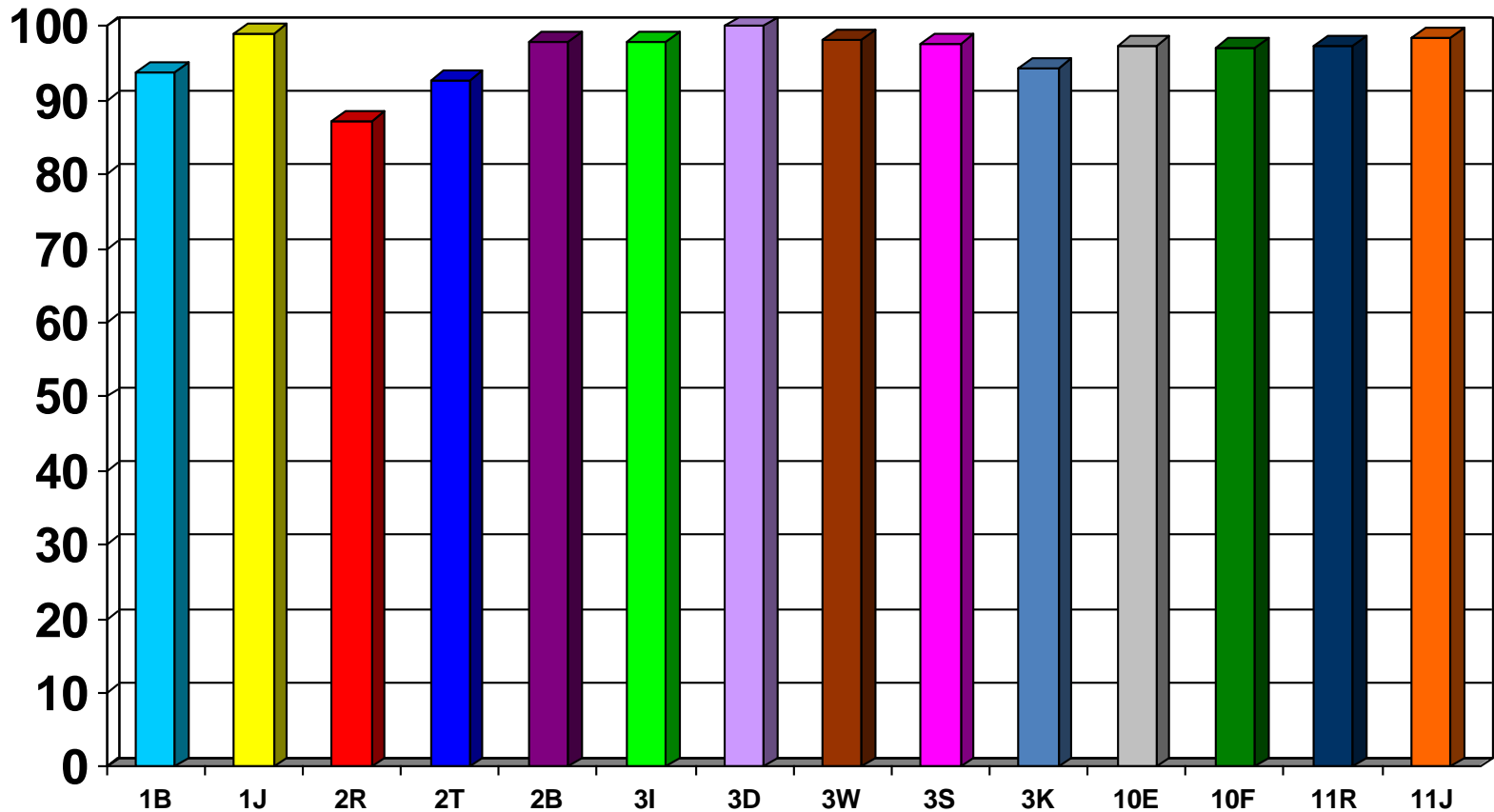
## w/e 7<sup>th</sup> June 2013



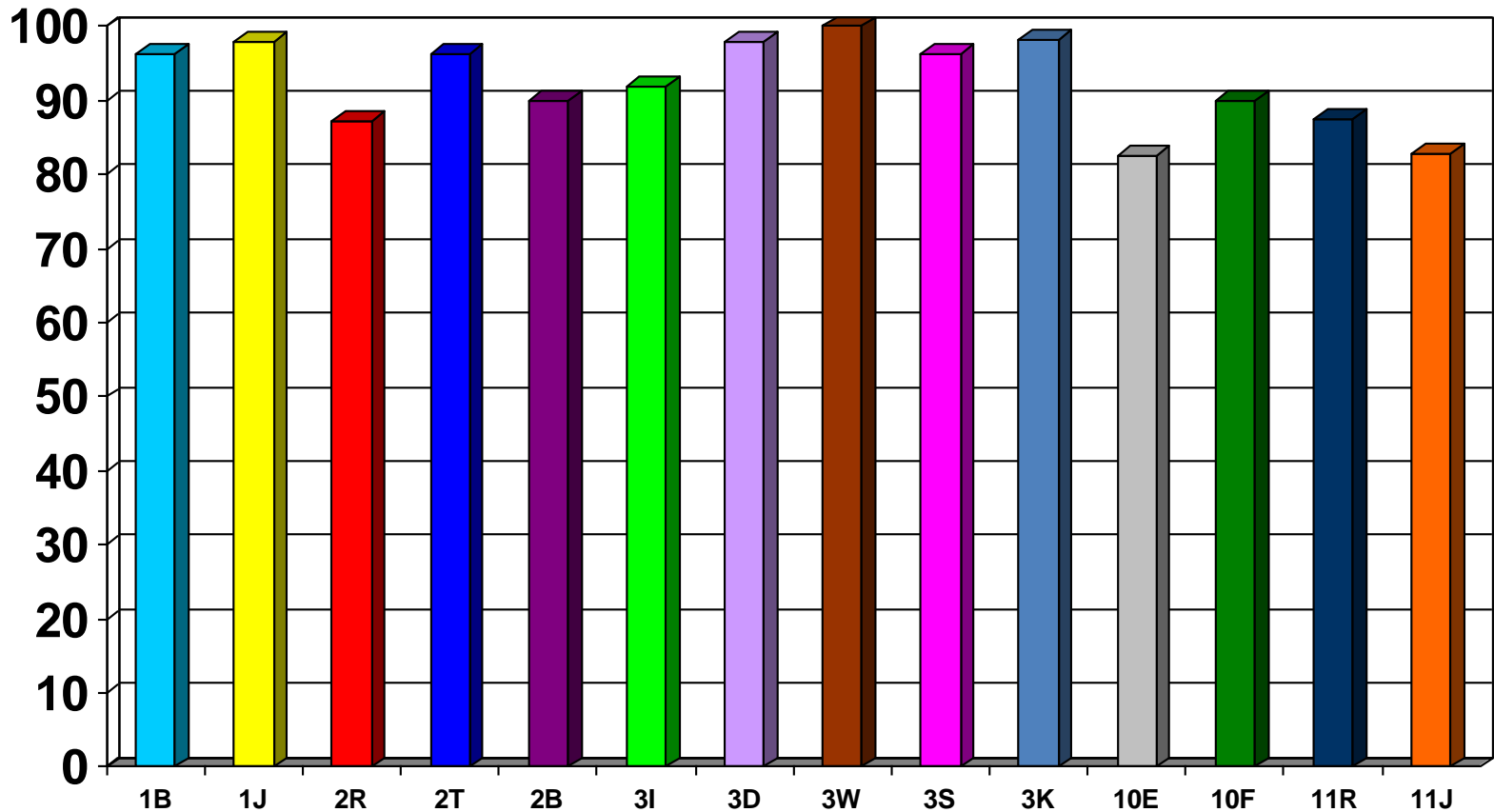
# Weekly Attendance by Class w/e 14<sup>th</sup> June 2013



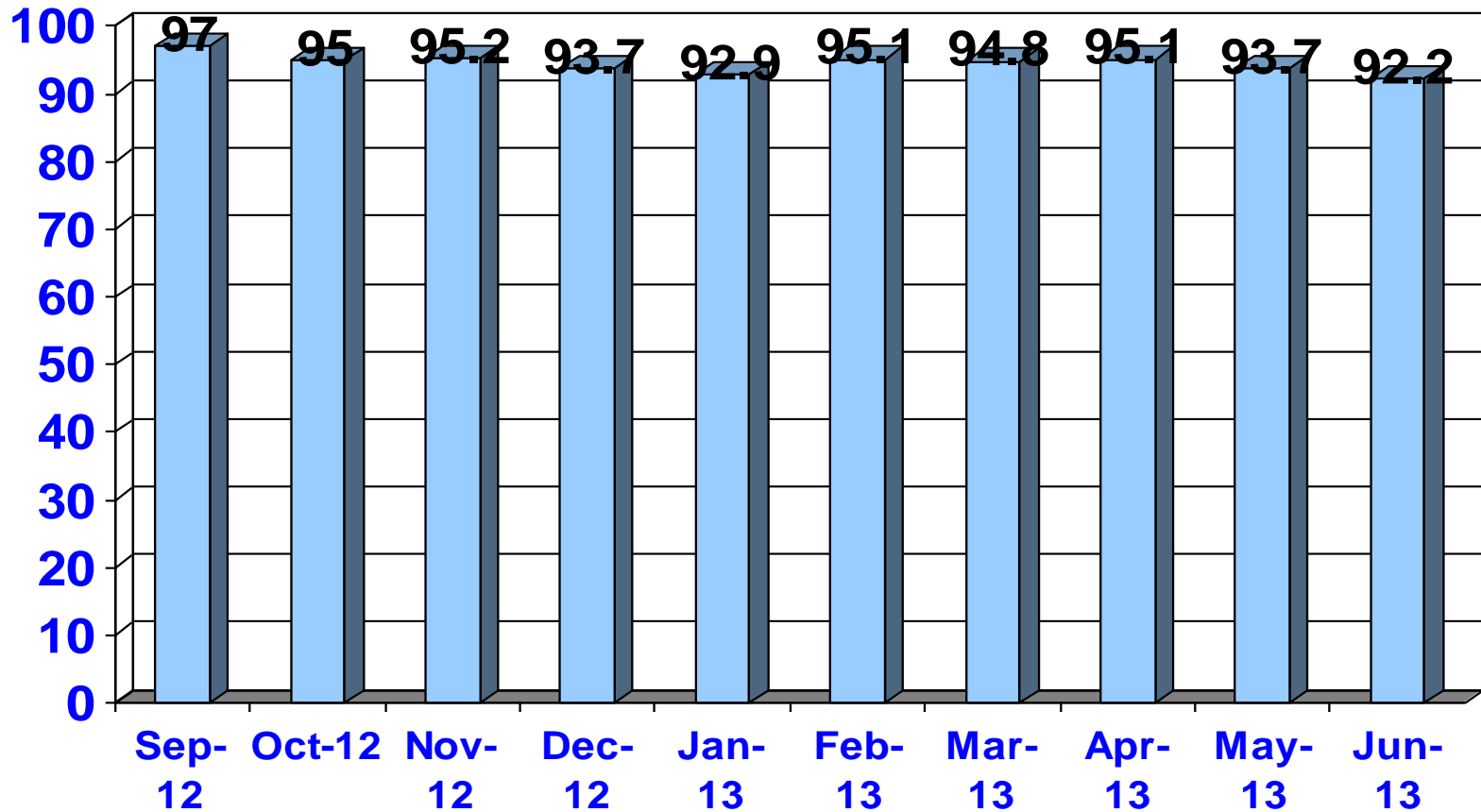
# Weekly Attendance by Class w/e 21<sup>st</sup> June 2013



# Weekly Attendance by Class w/e 28<sup>th</sup> June 2013

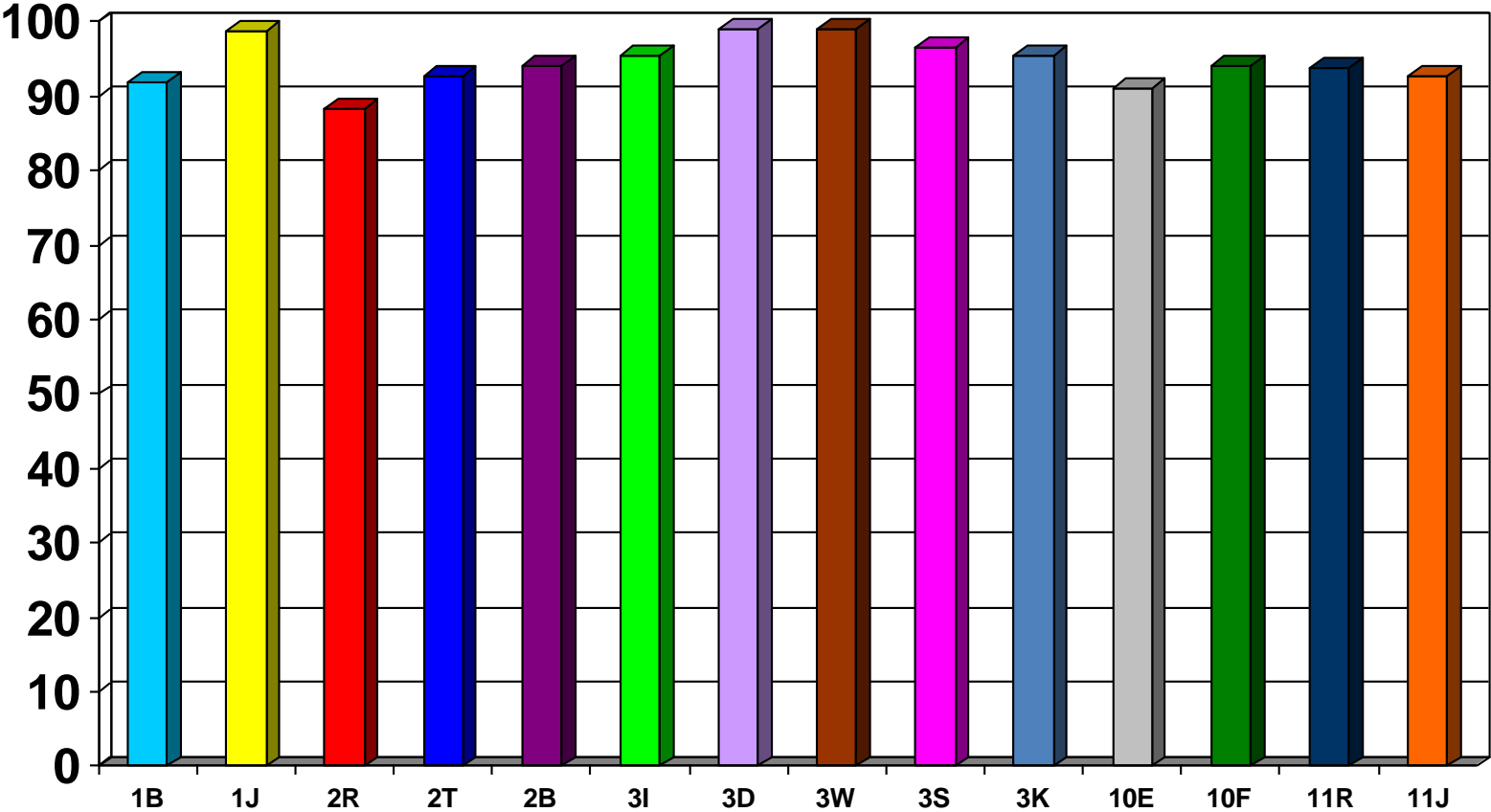


# Whole School Monthly Attendance 2012 -2013



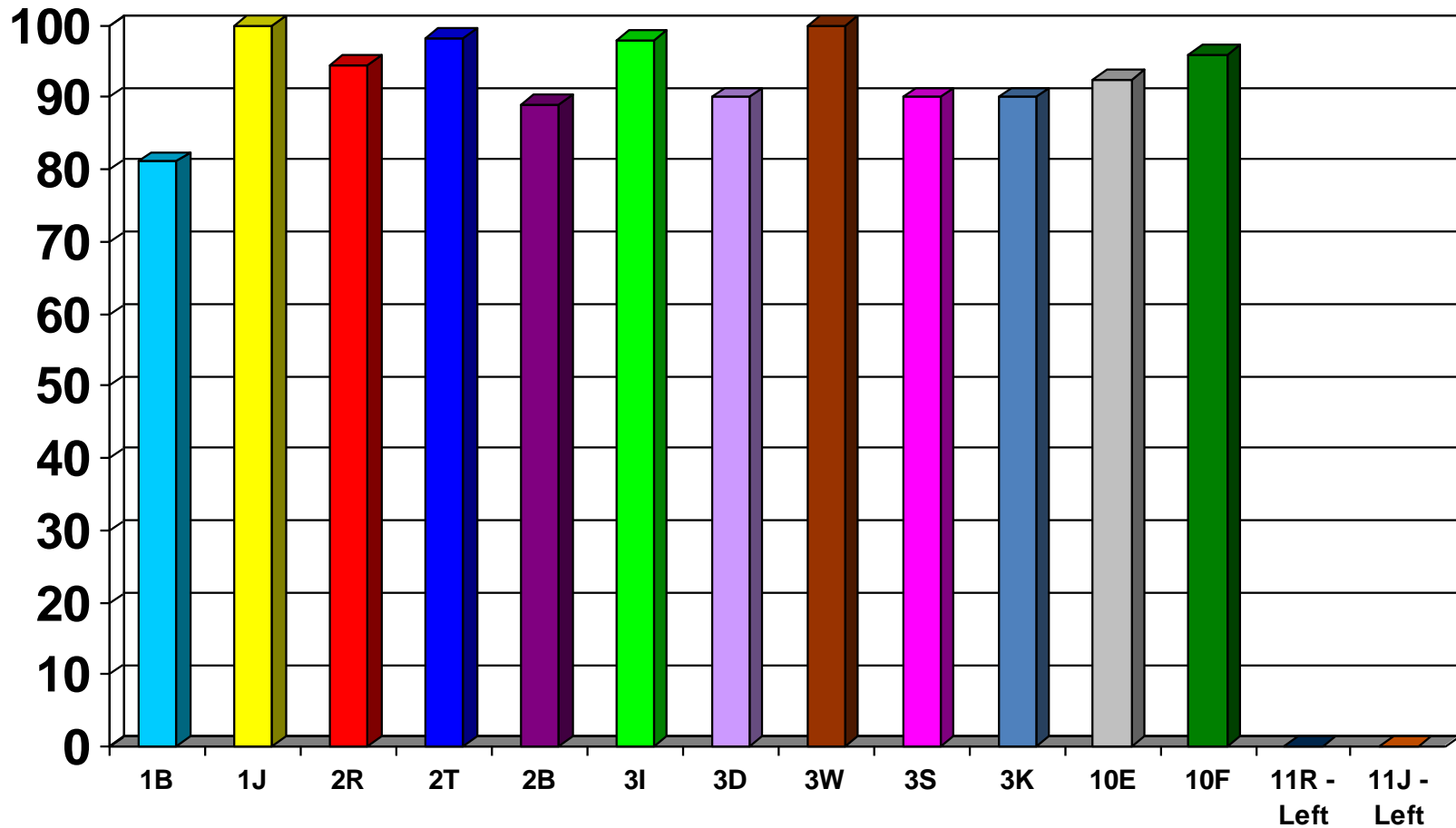
# Monthly Attendance by Class

## June 2013



# Weekly Attendance by Class

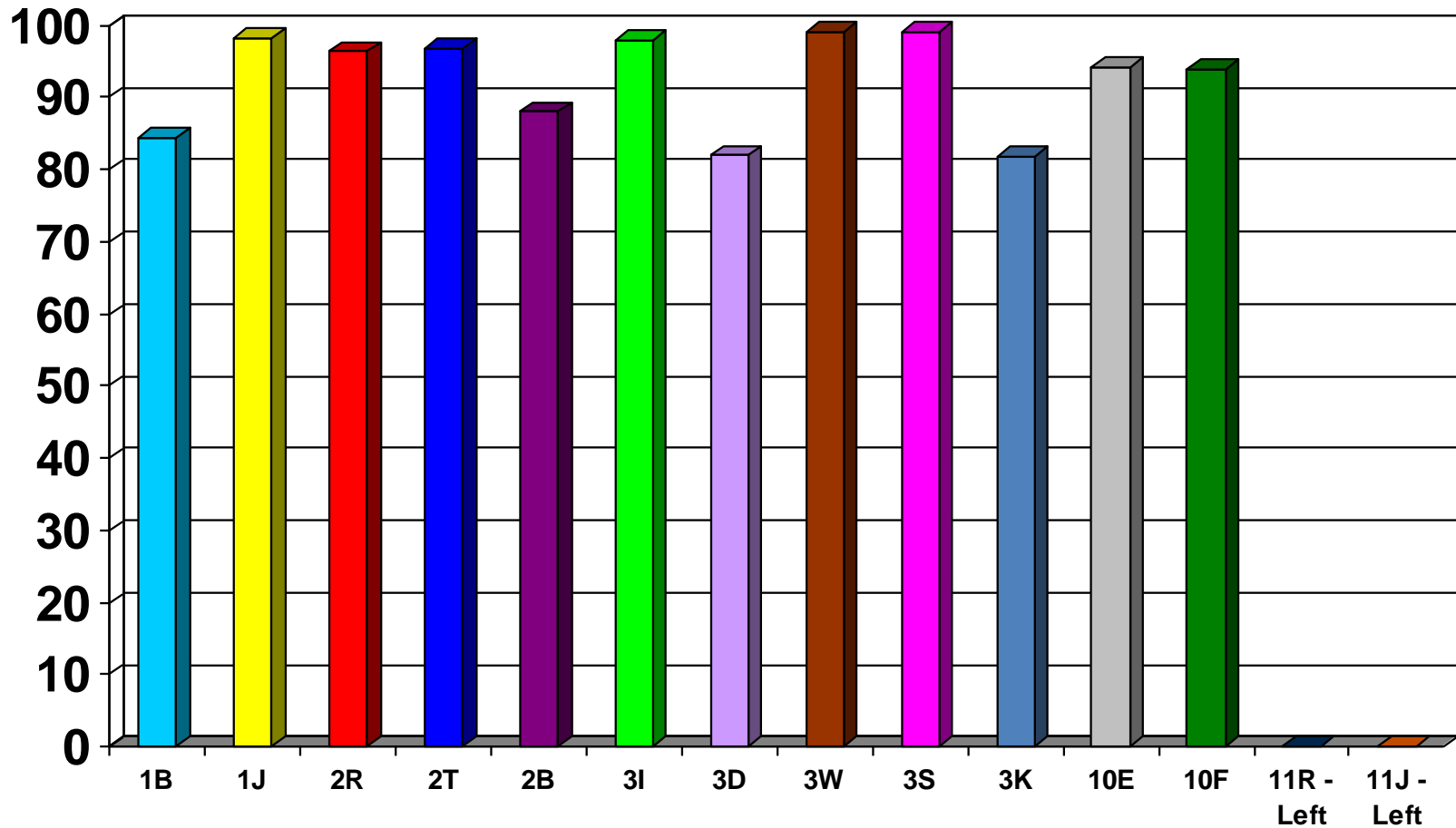
## w/e 5<sup>th</sup> July 2013





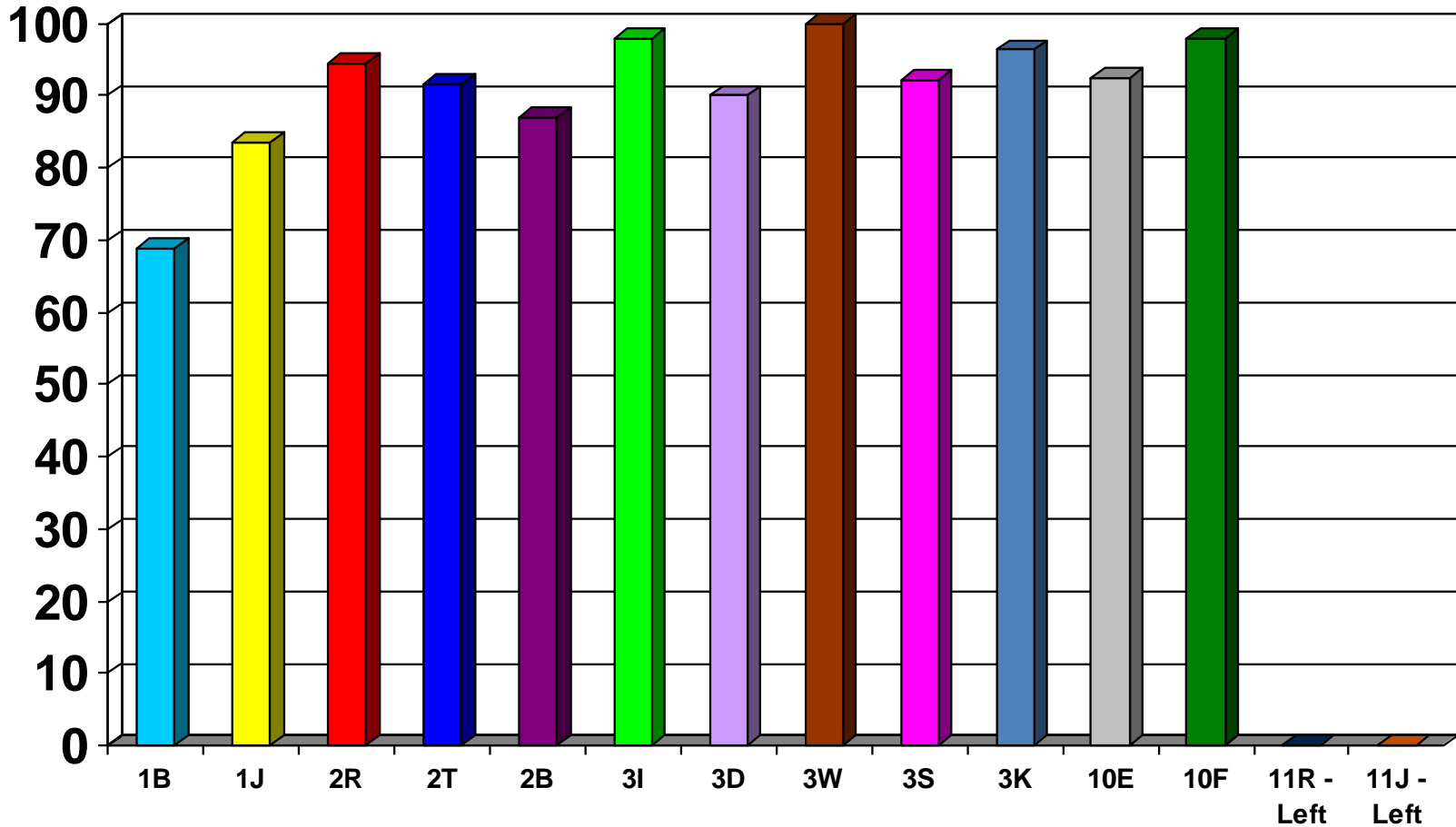
# Weekly Attendance by Class

## w/e 12<sup>th</sup> July 2013



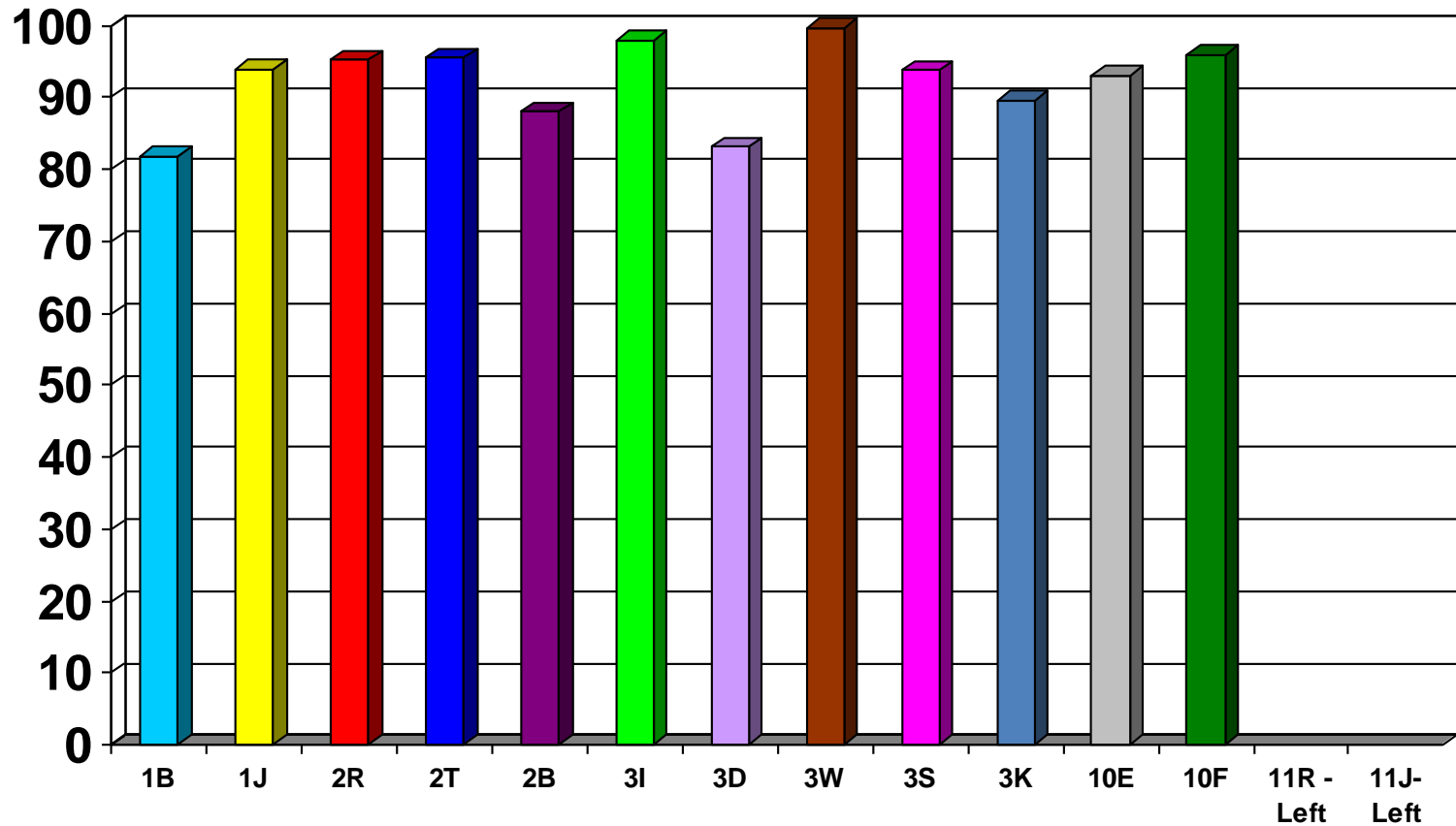
# Weekly Attendance by Class

## w/e 19<sup>th</sup> July 2013

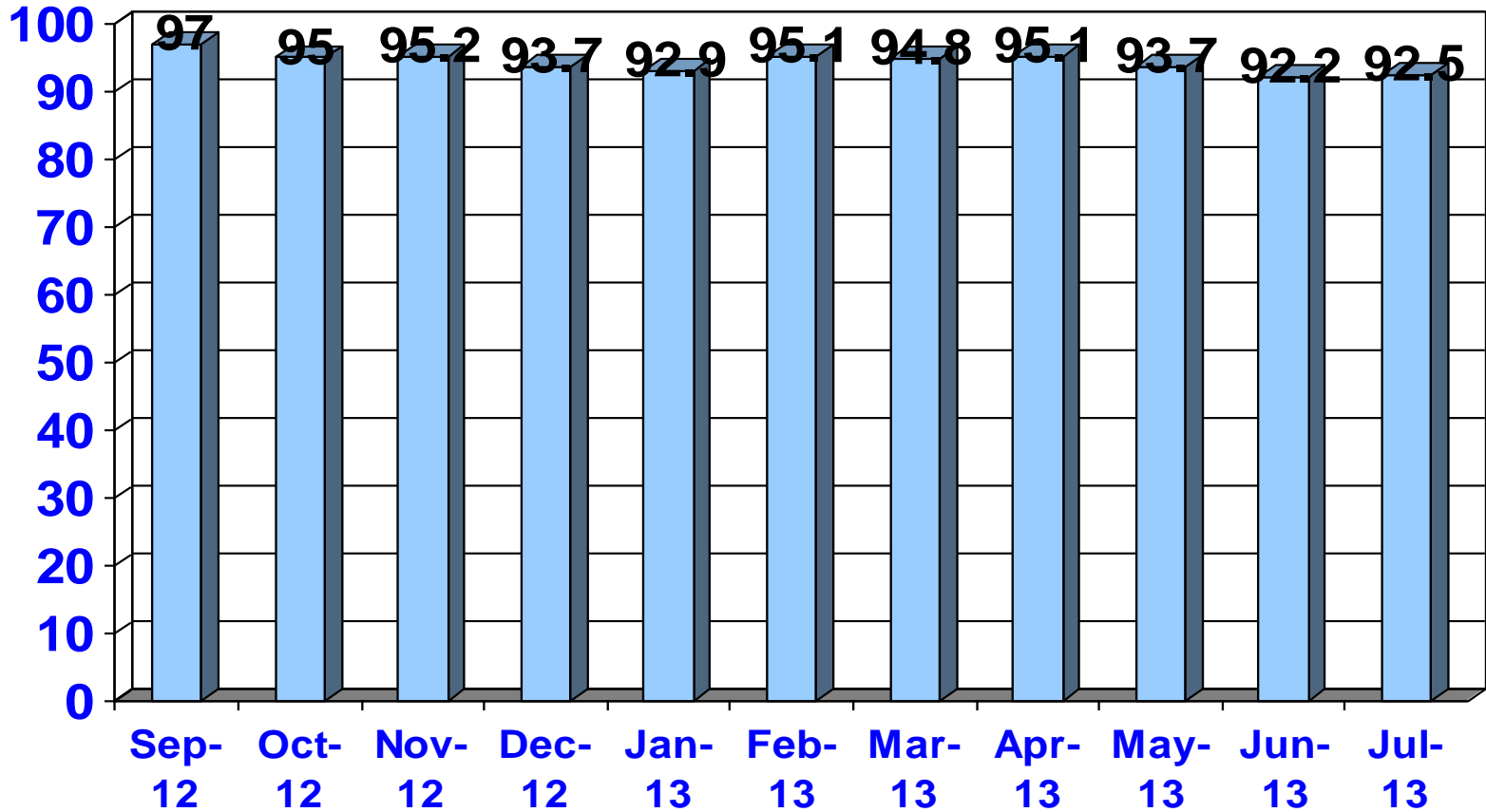


# Monthly Attendance by Class

## July 2013



# Whole School Monthly Attendance 2012 -2013



# Whole School Attendance 2012 - 2013

- Whole School Attendance 94.8%
- Authorised Absence 4.8%
- Unauthorised Absence 0.4%