

Fundraising at Priory

Creating inspiring learning
spaces and experiences
for our current and future
generations of pupils.



A message from the Principal

Thank you for taking the time to read through this booklet.

We hope the information within it will leave you as excited as we are, in this, the year we turn 70, about our plans for the future of Priory and inspire you to help us achieve our daily mission:



'Creating inspiring learning spaces and experiences for our current and future generations of pupils.'

Since Priory was established in 1953, we have seen thousands of pupils come through our doors.

Over this time, our on-going refurbishment programme has allowed us to develop and enhance our state-of-the-art facilities, both indoor and out, to aid learning and teaching, and to enhance our school environment for all our pupils' benefit.

As a result, we have some of the finest facilities of any school in Lancashire.

Whilst we actively raise funds in school to help provide such facilities for our pupils; each year, we rely on the support of our community to make our efforts go even further!

Thanks to the contributions from alumni, parents, friends of the school, grant making bodies and charitable trusts, we have been able to realise several school projects over the past few years.

However, we can never meet our goals without the support of people and businesses like you.

This year is a very special year for us here at Priory, as we celebrate our 70th year in September 2023.

To mark this special occasion, we'd love it if you could help us further achieve our mission, by supporting us in our **'70th Year Projects'**.

These are our **'Priory Garden and Outdoor Spaces'** project and our **'Jubilee Hall'** project.

You may wish to contribute to one, or both, the details of which you will find further on in this booklet, either by making a one-off donation through our JustGiving page; via a monthly contribution; through our Priory Alumni or by becoming a Priory Partner.

In whatever way you may wish to help, your legacy will live on through the work we undertake on these projects here in school; projects that will further help us achieve our mission.

All of the money raised will go to this very purpose.

Even a small donation will help us with this and your support is crucial to our efforts, so thank you in advance for any contribution you can make and please do share our information with your friends, family members and co-workers.

Any support is welcomed, so please do not hesitate to contact me for any further information or to discuss how you might be able to contribute on an individual basis.



Handwritten signature of Mr M Eastham.

Mr M Eastham, Principal

head@priory.lancs.sch.uk

Fundraising at Priory - Celebrating 70 Years

'Priory Garden and Outdoor Spaces' Project

Whilst our current gardens are award-winning (Penwortham in Bloom, North West in Bloom), with stunning views from our classroom windows, we want to enhance our Priory garden and outdoor spaces by creating 'all-weather' spaces of serenity and calm for all our pupils. Places where all will be able to sit and immerse themselves in the outdoors, during their unstructured time, at break, at lunch, before and after school; but spaces that can be used all year round.

After the focus of classroom learning, having spaces where pupils benefit from a calming place to go to unwind, reflect, read, ponder their thoughts and chat with friends is essential for their physical and mental well-being.

So, our vision for this outdoor environment of solace includes all-weather seating, a water feature and paved walkways. The lawn will be surrounded by carefully selected herbaceous plants and perennials bringing blooms of colour and scent. This will be regularly maintained by our professional gardener and expert estates team all the year round.

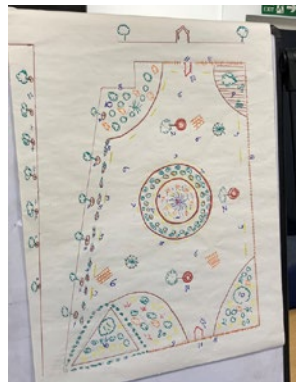


Image: Artist's impression.

Pupils too, may choose to become involved under tutelage from our qualified team. Our partner primary schools will benefit from being able to visit these outdoor learning spaces too and these areas will also benefit the many members of our local community who use our school for lettings, clubs and events outside of school hours.

Image: Design idea only.



What is needed?

- Plans and drawings
- Groundwork machinery
- Groundwork labour
- Drainage
- Materials and gardening equipment
- Trees, shrubs and plants
- Time and trade skills
- Benches, fencing, shelters



Our fundraising aim:

£30,000 - £35,000

Above images: Design ideas only.

Below image: Mr Chris Farron, Priory's professional gardener.



Fundraising at Priory – Celebrating 70 Years

'Jubilee Hall' project

As part of our celebrations, we are looking to upgrade our performing arts facilities within the main school hall. The hall is host to a wide variety of events, both by the school and by outside organisations, therefore improvements and upgrades are needed to cater for performances ranging from dance to theatre and music to assemblies. The systems therefore must be easy to use for the day to day user but provide full control for the more advanced operator.



What is needed?

- Performance Lighting including spotlights and control panel
- Radio Microphones
- Wired Microphones
- Main Output - An output solution that provides a high quality, even, acoustic coverage of the hall
- Monitor Output - A pair of active monitor speakers
- Comms - An 8-way wireless communications system for use of stage and production crew, supplied with a carry bag, batteries and charger.
- Scenery Tracks - Complete with ball raced runners above the stage running stage left to right for use with scenery cloths. These tracks are to allow scenery cloths to be swiped across from the off stage left wing to create a new scene on stage.
- Stage Curtain Tracks and Curtains
- Backstage blues system for backstage safety on the stage
- Assistive Listening System
- Projection - A suitable projector and screen to allow both assemblies to take place as well as projection of scenery.
- AV Racks



- AV Control – a control system that can be used on a day to day basis for the following functions:
 - Operation of the projector and projection screen for an assembly including projector source selection
 - Control of the AV volume through the PA system as well as the volume of up to 6 other sources
 - Playback of 6 stage lighting states.



Our fundraising aim:

£30,000 - £35,000

As a school we are committed to working on these projects and are actively seeking grants to support the investment required to complete their construction, however, this will not meet all of the funding required.



Therefore, should you be in a position to support either of these landmark schemes, please take a look at the options open to you overleaf.



How can you help?

Supporting Priory can be as simple or as elaborate as you want it to be.

Making a regular or one-off donation

If you are pushed for time but would like to support us then it's easy to donate via our JustGiving page.

JustGiving™

JustGiving is the world's leading online fundraising platform, helping charitable projects to make more with Gift Aid. Priory's JustGiving fundraising page enables us to collect donations and sponsorship in a fast and easy way.

JustGiving allows our supporters to donate any financial amount via their site with a credit or debit card. Regular monthly donations can also be set up via their direct debit collection. If you are a UK taxpayer, we can also claim Gift Aid which lets us collect a further 25% of each donation.

Visit Priory's website and make your contribution via our 'Fundraising @ Priory' page: www.priory.lancs.sch.uk/fundraising-priory or go direct to:

www.justgiving.com/penworthampriory

Donating gifts and prizes

You may like to donate something for our fundraising raffles and competitions. To do this, please contact the Principal's PA, Mrs Sue Spencer, at: s.spencer@priory.lancs.sch.uk.

Become a partner

If you'd like to play more of an integral part of a Priory project, then we welcome any support from the talent of our community.

Donating your time or offering a skill is invaluable to any sponsored project. Whether it be giving expert advice or providing a trade skill, there are no expectations to your level of commitment.



Head Girl and Head Boy from 1953 with Principal, Mr Eastham. 70th anniversary raffle draw.

The school lottery

The school lottery has been set up specifically to help us achieve our fundraising vision.



'Your School Lottery' is part of the Gatherwell Ltd lottery group which was launched with a core value of being an ethical lottery provider to help schools facing growing financial pressure.

Anyone can get involved, including friends, family members and co-workers. By taking part, the pupils at Priory will benefit directly regardless of who wins, as every penny raised goes straight back to our school. There is a guaranteed cash winner for the school each week and the chance to win the £25,000 jackpot!

You can choose to set up a direct debit, a recurring card payment or a one-off payment by card (the minimum term for this is 5 weeks at £5). Every supporter who buys a ticket will be making a difference to Priory.

Please note that all supporters must be 16 years of age or older.

To find out more information on how you can take part, please visit our 'Your School Lottery' web page to purchase your tickets.

www.yourschoollottery.co.uk/lottery/school/penwortham-priory-academy



SUPPORT OUR LOTTERY TODAY

- £1 per week
- Weekly cash prizes
- £25,000 jackpot

Splitting the £1.00

- 40p goes to our school
- 36p goes to cash prizes
- 20p goes to admin costs
- 4p goes to VAT

The Maths... 100 tickets sold a week means
= £30 weekly cash prize
= £2,080 a year for our school

To start supporting, visit:
yourschoollottery.co.uk
and search for: Penwortham Priory

Supporters must be 16 years of age or older



Priory alumni

Our school has played a significant and memorable role in thousands of lives over the years, either personally or with many seeing their children and grandchildren pass through the doors here too. Their experience here was supplemented, even then, by the generosity of others that have come before them.



Donating towards a discipline close to your heart or expertise, be it sport, the arts, science or perhaps careers talks and workshops, will lay in the minds of pupils and enrich their experience for generations to come.

In whichever way you choose to support us, you will be playing an important part in ensuring the success of these projects. In all cases you can be assured that any support will be fully appreciated.



Your legacy

We have no doubt that you'll be proud of what we achieve together however as a token of our gratitude, we have lasting ways of showing our thanks.

Wall of Acknowledgement | Plaque | Sponsored Brick |
Sponsored Paving Stone | Register of Names |

There can be naming opportunities for large benefactors, such as tree planting.

We also offer the opportunity to gain exposure with individual and corporate names included through our public relations and media channels at key stages of the projects; during construction, at completion and prior/post an opening ceremony.

Priory is not just bricks and mortar – help us build on our successes and create lasting legacies for the benefit of all our pupils, both present and future.

Thank you!



Creating inspiring learning spaces and
experiences for our current and future
generations of pupils.

Crow Hills Road, Penwortham,
Preston PR1 0JE

Tel: 01772 320250 | Email: enquiries@priory.lancs.sch.uk
www.priory.lancs.sch.uk



Learn to succeed