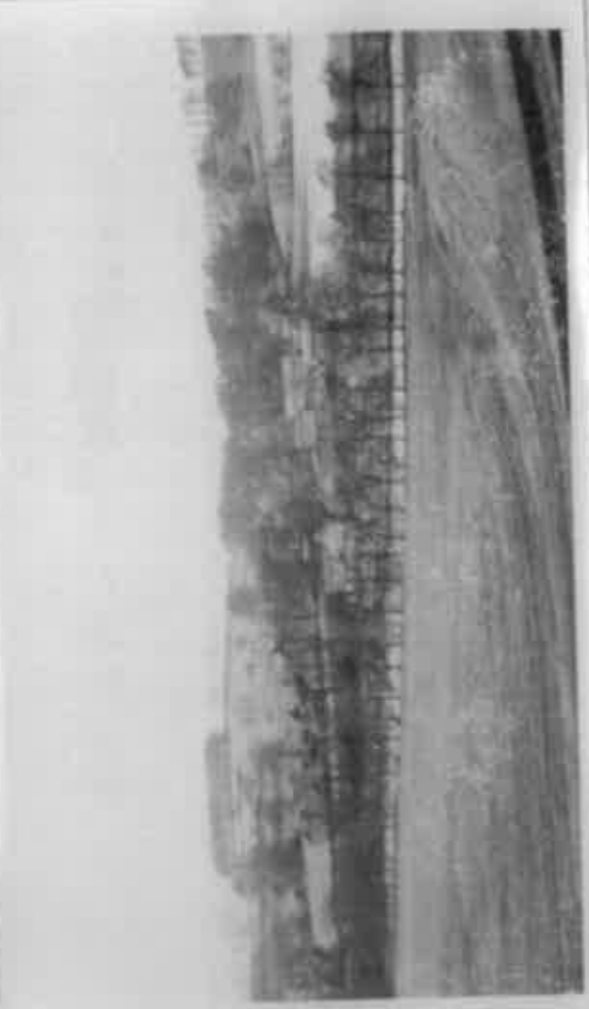


Slaidburn - 1963.

Field studies with the school.



Slaidburn - 1963.

Field studies with the school.

Sticks reservoir.

1965

On the second day exploring Slaidburn. Four of the party consult the map to find out their next point of destination left to right.

A. Bamford, G. Bond, D. Heintson,
B. Welch.

1963

PENWORTHAM COUNTY SECONDARY
SCHOOL.

SLAIDBURN. 1963.

21

11

The Junior school, Slaidburn.

1963

25

1963

6

The whole party on the last day, at Whitewell. They are not really consulting the map just pretending too. In fact we were nearly lost at one time! It's the left murder is being committed.

View of Slaidburn from hill just outside the village.

1963

16

Rock formation where fossils were found and specimens collected.

1963

10

Slaidburn Church. In the background Miss Hargreaves admires the fine building.

1963

8