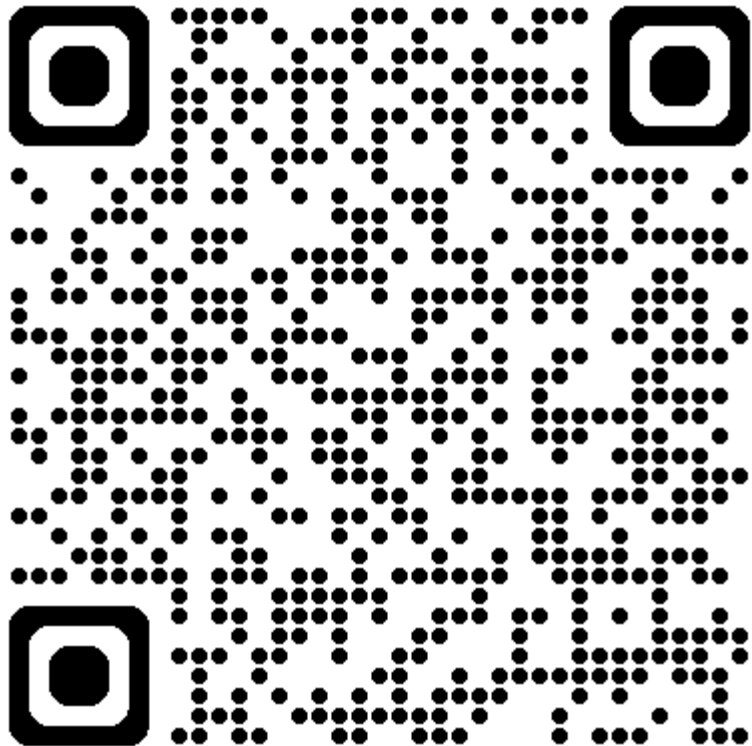


Arbor

Arbor Student App Instillation – Step 1

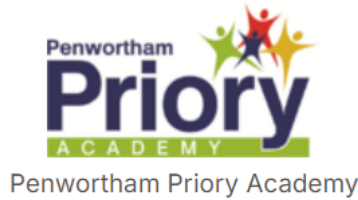


Scan the QR code on your phones

Alternatively type or click on the link below:

<https://penwortham-priory-academy.uk.arbor.sc/?/home-ui/index>

Arbor Student App Installation – Step 2



Welcome to Arbor

Email address

Password

[First time logging in?](#) [Forgot your password?](#)

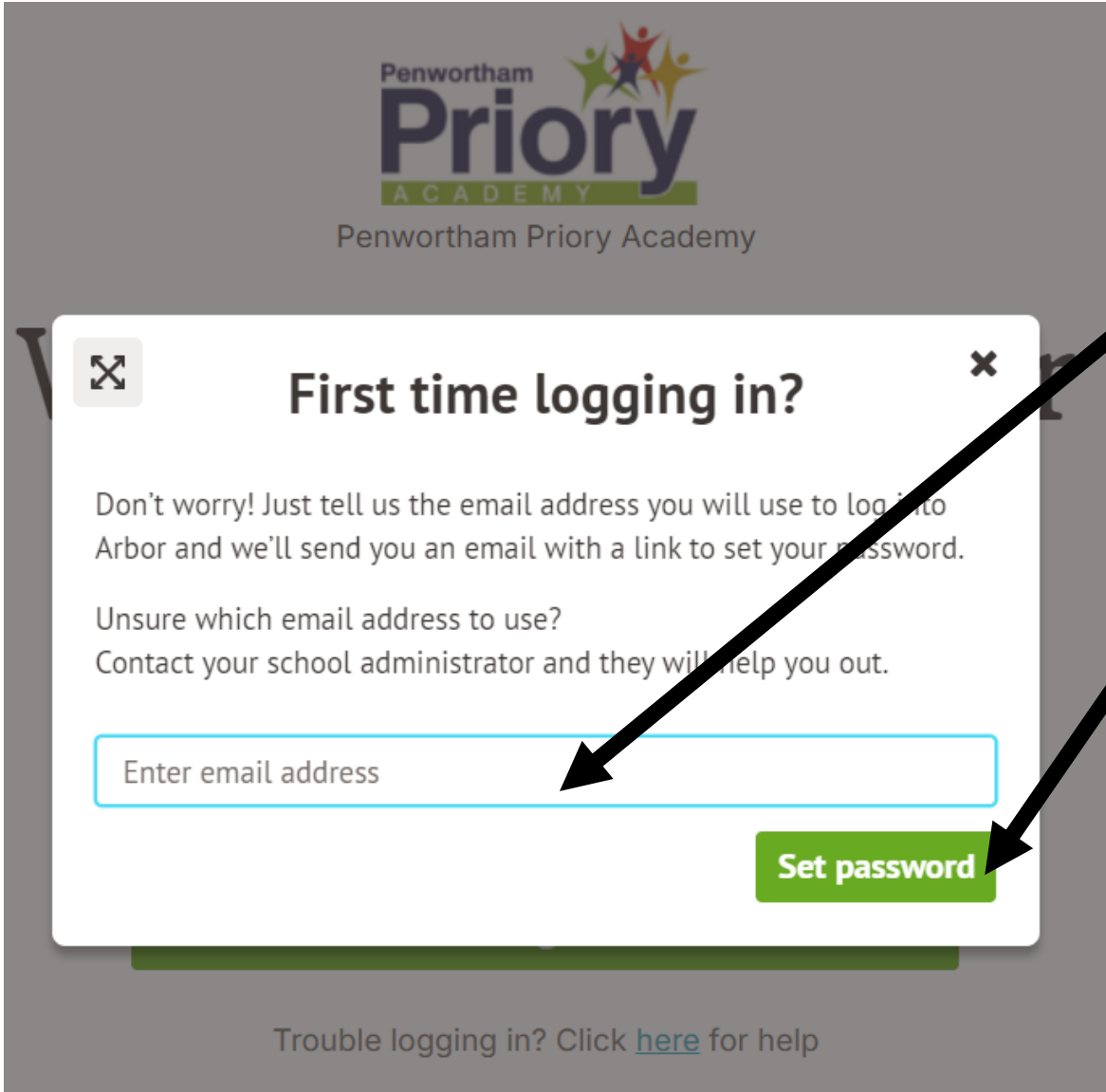
Log in

Trouble logging in? Click [here](#) for help

You should all now be looking at this page.

Click on the First Time Logging In? link

Arbor Student App Installation – Step 3



Enter your school Email address e.g.

21asmith@priory.lancs.sch.uk

and press the set password button

**UNDER NO CIRCUMSTANCES
USE ANY CAPITAL LETTERS IN
YOUR EMAIL ADDRESS. ITS ALL
HAS TO BE LOWER CASE.**

Arbor Student App Installation – Step 4



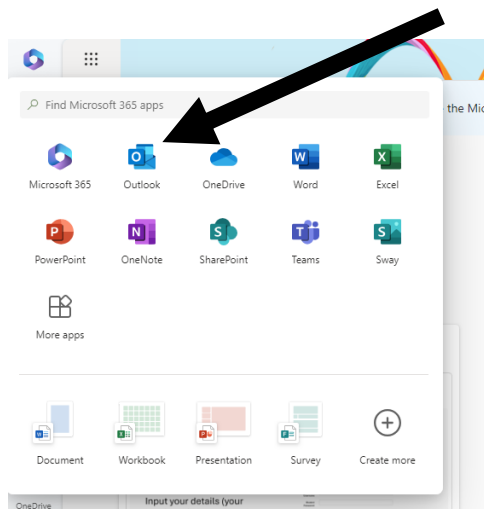
Open your school Email.

If you don't know how to open to open your school Email go to:

www.office.com

Click on the Sign In blue button, enter your school Email address (e.g. 21asmith@priory.lancs.sch.uk) and your school password (no capital letters in your Email address)

Choose the outlook icon and then click on the Email from Arbor, it should be at the top.



Arbor Student App Installation – Step 5



From: Penwortham Priory Academy <password-reset@arbor-education.com>

Sent: 30 December 2024 16:11

To:

Subject: Change your Arbor password

You don't often get email from password-reset@arbor-education.com. [Learn why this is important](#)

Hi Neil,

We've just received a request to change your password on your Arbor account.

If you requested this password change, please click the link below to set your password:

<https://penwortham-priory-academy.uk.arbor.sc/auth/change-password/id/1mMtYmRjZTc1MTQ4ODE0LjE3MzU1NzUwNDI=>

Use your email address when you log in next time:

Username:

If you didn't ask to change your password, you can ignore this email. No changes will be made to your account.

Once the Email from Arbor is open click on the blue link

Arbor Student App Installation – Step 6



Create password for

New password

Confirm password

Create password

Password criteria:

The password must be at least 7 characters in length.

The password must contain at least one letter.

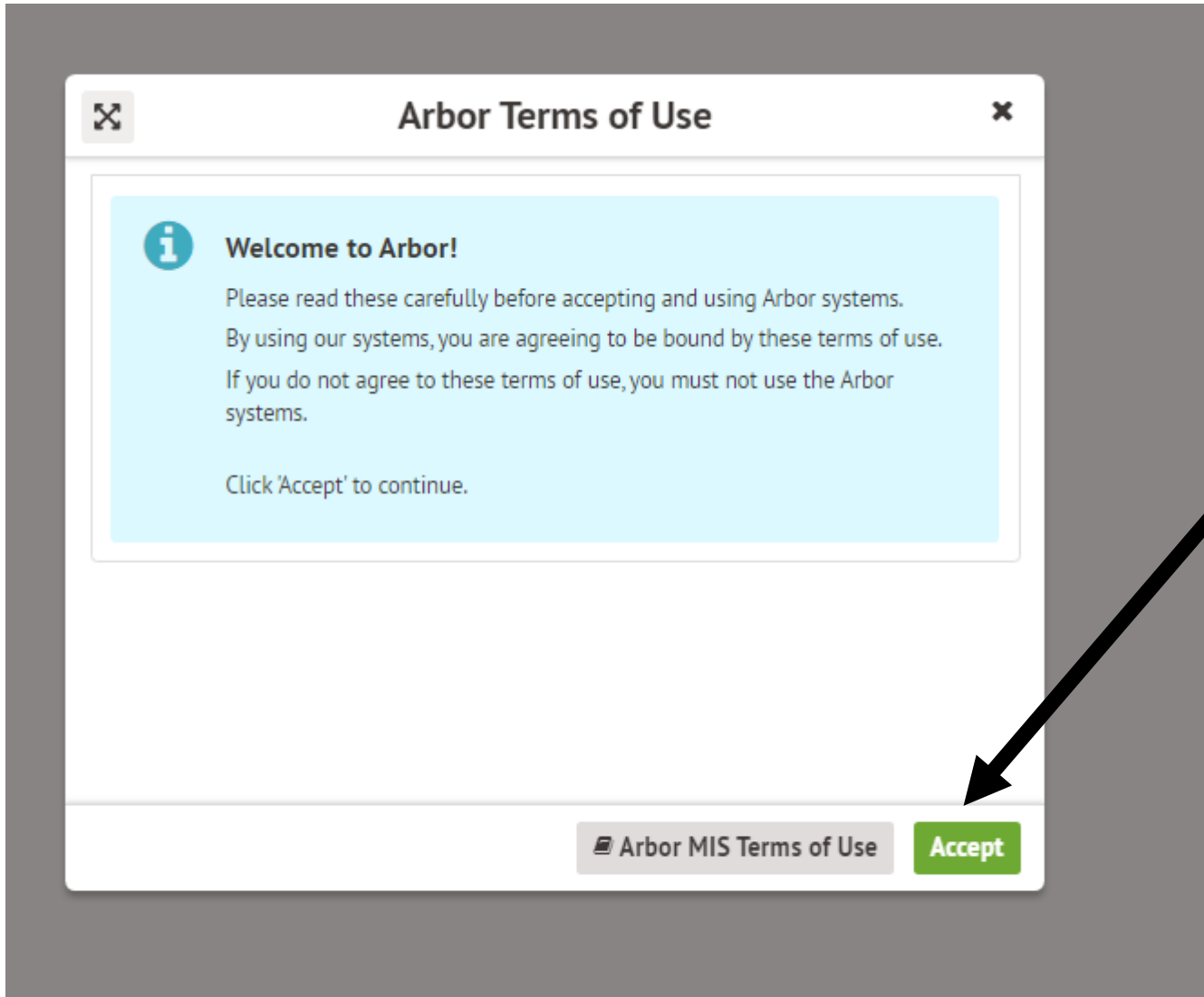
Enter a password of your choice

Confirm the password

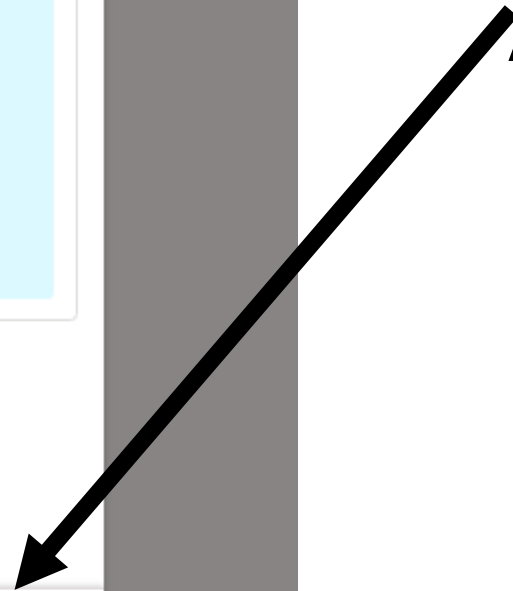
Click the Create password button

Remember password must be at least 7 characters in length and contain at least one letter

Arbor Student App Installation – Step 7



Click the green
Accept Button



Arbor Student App Installation – Step 8



You are now on the web based version of your app

A screenshot of the Arbor Student App web interface. The interface is divided into several sections. On the left is a navigation sidebar with icons for Home, Notifications, My Calendar, Help Centre, and Sign Out. The main content area is split into three columns. The top-left column shows 'Current lesson' and 'Next lesson' information. The top-right column is titled 'Statistics' and displays 'Attendance (2024/2025)' at 92.8%, 'Positive Points - this term' at 50, and 'Negative Points - this term' at 0. The middle section is 'Assignments that are due', showing one assignment: 'TEWS: Arbor Assignment Test Penwortham Priory Academy (Due 15 Jan 2025)'. The bottom section is 'My Courses', listing various subjects like PE, RE, French, Geography, Creative Arts, Computing, Learning for Life, Reading, English, History, Mathematics, Science, and Technology.

Current lesson
08:50 - 09:50
Thu, 09 Jan 2025
PE (Gen): Physical Education (Gen)
Year 7: 7E2/Pe >
Room: SHAL
Mrs Bullock

Next lesson
09:50 - 10:50
Thu, 09 Jan 2025
French (Gen): Year 7: 7E3/Fr >
Room: MFL1
Mrs Scully

Statistics

Attendance (2024/2025)
92.8%
Year: 92.8%
Last 4 weeks: 100%

Positive Points - this term
50
This year: 50 points
Last term: 0 points

Negative Points - this term
0
This year: 0 points
Last term: 0 points

Assignments that are due
TEWS: Arbor Assignment Test Penwortham Priory Academy (Due 15 Jan 2025)
Waiting for student to submit >

My Courses
PE (Gen): Physical Education (Gen) Year 7: 7E2/Pe >
RE (Gen): Religious Education Education (Gen) Year 7: 7E3/Re >
French (Gen): Year 7: 7E3/Fr >
Geography (Gen): Year 7: 7E3/Gg >
Creative Arts (Gen): Year 7: 7E3/Ca >
Computing (Gen): Year 7: 7E3/Cp >
Learning for Life (Gen): Year 7: 7EWS/LI >
Reading + (Gen): Year 7: 7E3/Rd >
English (Gen): Year 7: 7E3/En >
History (Gen): Year 7: 7E3/Hi >
Mathematics (Gen): Mathematics (Gen) Year 7: 7E3/Ma >
Science (Gen): Sciencetegrated (Gen) Year 7: 7E3/Sc >
Technology (Gen): Year 7: 7e/Te4 >
Year 7: 7EW3 >

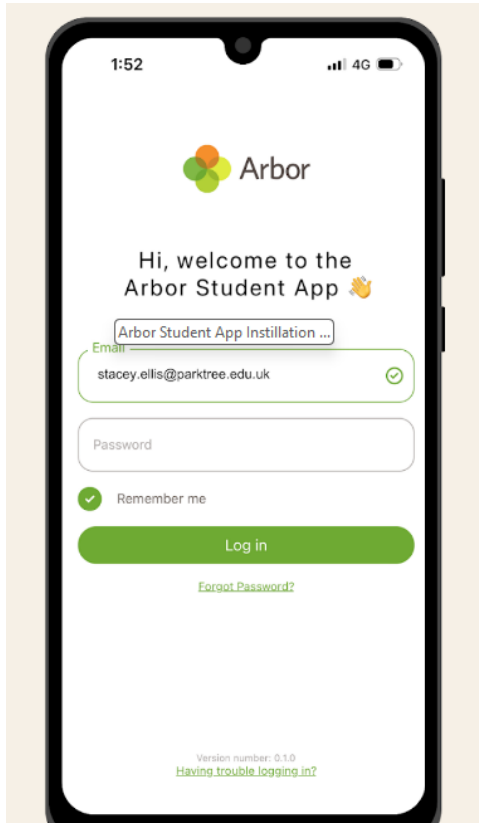
Arbor Student App Installation – Step 9



Arbor

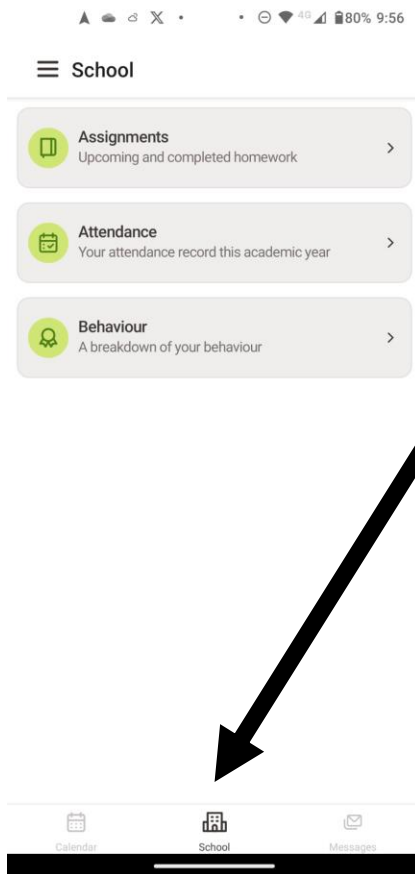
Now go to your app store (Apple) or Play Store (Android) and download the Arbor Student App (NOT THE PARENT APP)

Once the app is downloaded to your phone, open up the app and enter your school Email address (ALL LOWER CASE) and the password you just created on the web version and press log in.



Using the App

- It's a very simple app to navigate



Click on the School icon and you can see your homework (called Assignments), your attendance and your behaviour record.

We will be adding more features including messages from teachers, notification of sports fixtures etc

