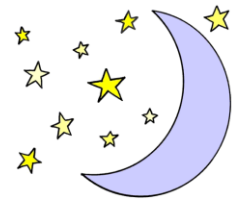


# Moonbeam Class

## Summer term – Work web



Create your own puppet or finger puppet and perform a puppet show to your family or friends. You could even video it and send it to me to watch.



Find some junk or something old in your house and turn it into something new or different! E.g. a plastic bottle into a bird feeder, a tin can into a plant pot or a milk bottle into a pencil pot.

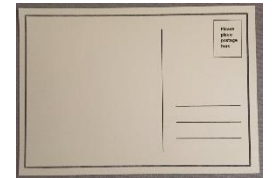
Go around your house and find things that belong in pairs. How many sets of pairs can you find? How many pairs of socks are there in your house? How many pairs of shoes can you find?

### Week 5

Conduct an interview! Write down ten questions that you would like to ask a family member or a friend and then interview them by asking them your questions and write down the answers. Remember the important punctuation a question needs at the end of it.

Set up your own obstacle course in your house or the garden and time how long it takes you and your family members to complete. Try and beat your time by completing the course again.

Write me a postcard. You could tell me about your time at home and some of the activities you have done, you could ask me questions or tell me about what you are looking forward to doing when you get back to School. Email me a picture of it or send it to School for me to read. Remember what a postcard looks like and think of the picture you want to draw on the back of your postcard.



**Choose one of the activities from the web to complete each day, (Monday to Friday) and send any photos or videos of your completed tasks to my email. I will also be happy to answer any questions you may have, regarding these tasks. I can't wait to see how you get on! [swilson@poolhouse.lancs.sch.uk](mailto:swilson@poolhouse.lancs.sch.uk)**