



PORTLAND
SCHOOL



Shaw
Education
Trust

Admissions Policy 23/24

Portland School has been part of the Shaw Education Trust since February 2023. We cater for primary and secondary aged students at Portland School with Social, Emotional & Mental Health as their primary area of need. All students will have an Education, Health and Care plan (EHC) and students attend from Stoke-on-Trent and Staffordshire.

Portland School Admissions Criteria

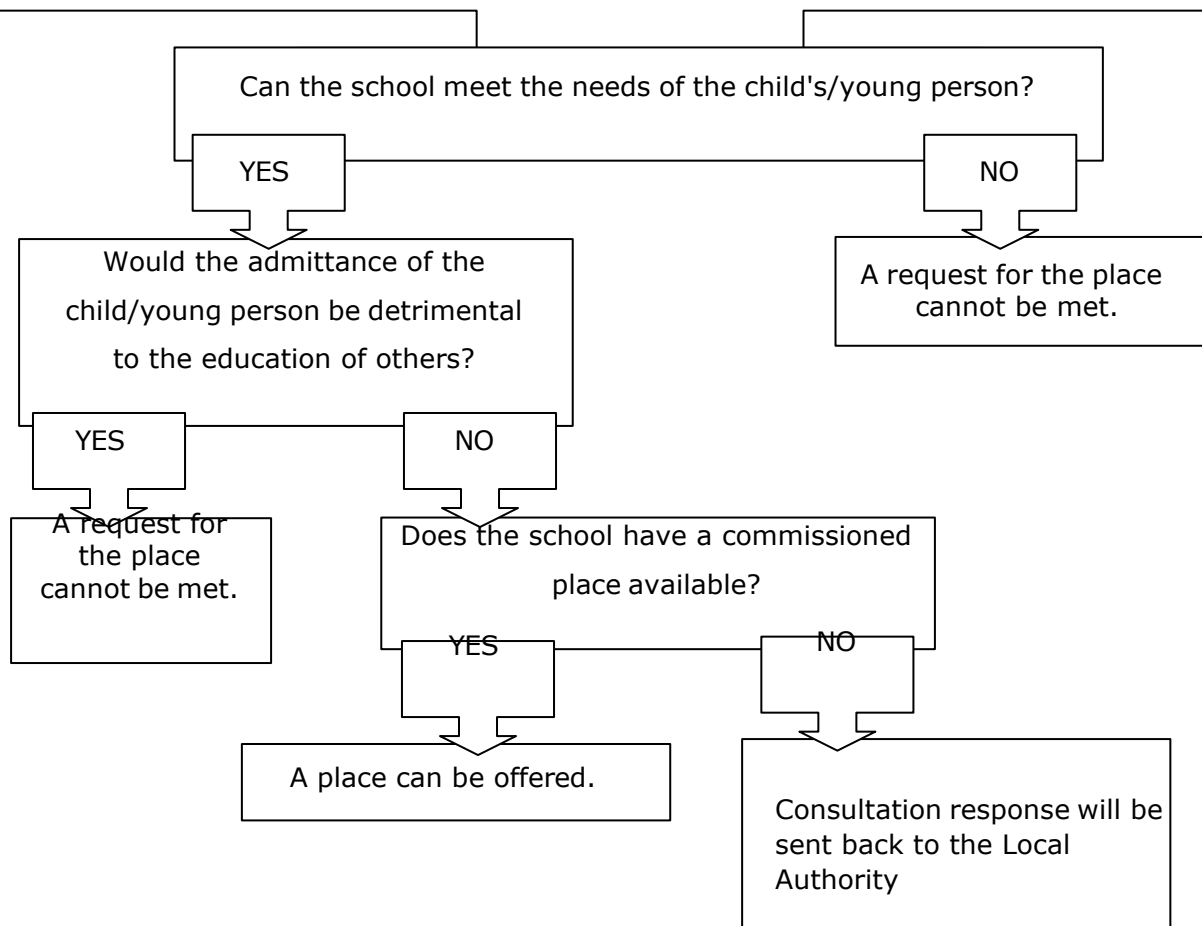
All students who attend Portland School have an Education, Health and Care plan. Pupils considered for placement:

- Will have Social, Emotion and Mental Health as their primary area of need
- May have additional needs which may include;
 - Attachment disorder
 - Autism Spectrum Condition
 - Attention Deficit Hyperactivity Disorder
 - Moderate learning need
 - Physical Disabilities
 - Sensory Impairment (VI, HI, MSI)

The process of application and decision making is displayed in the flow chart below;

PORTLAND SCHOOL ADMISSIONS PROCESS

- Child/Young Person has existing Educational Health and Care Plan.
- A Special School Educational placement is requested (either at an annual review of the EHCP or on a new EHCP).
- The revised or new EHCP is then sent to the Local Authority (LA), who decide if a request for a special school place is agreed.
- The revised Plan is sent to the school named on it for consultation.
- Paperwork is then analysed by the Senior Leadership team at Portland School as follows...





Shaw Education Trust

Shaw Education Trust Head Office,
Kidsgrove Secondary School,
Gloucester Road,
Kidsgrove,
ST7 4DL

Twitter	@ShawEduTrust
LinkedIn	@ShawEducationTrust
Call	01782 948259
Email	info@shaw-education.org.uk
Visit	shaw-education.org.uk

**people
centred**

**Act with
integrity**

**Be
innovative**

**Be best
in class**

**Be
accountable**