

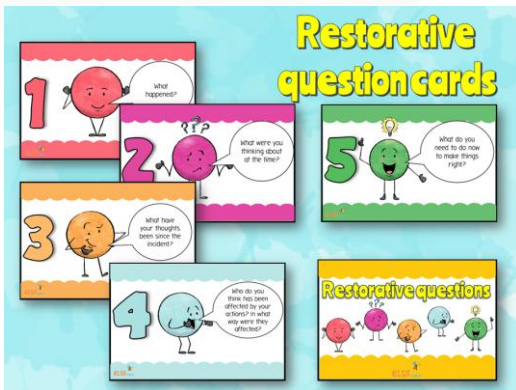
Education Inclusion Family Advisor Newsletter June 2025

A Bit About Me

Hi, my name is Emily, I'm your school's link EIFA. As an EIFA I offer advice and strategies to parents and carers with a Primary School aged child that may be experiencing some challenges around things such as routines, sleep, sibling rivalry, challenging behaviour, worries or self-esteem. If you'd like a chance to chat about any of these topics, just contact me on the details below.

Parenting Top Tip: Restorative Conversations

After your child has calmed down after a meltdown, a restorative conversation can help to mend relationships. They give your children a chance to listen, reflect, empathise and make things right. It is also a learning opportunity for everyone to plan how to deal with things differently in the future.



*Reference - ELSA

Step 1 – What happened? Let your children tell the story:

Step 2 – 'What were you thinking about at the time?'

Step 3 – 'What have your thoughts been since?'

Step 4 – 'Who has been affected by your actions? In what way?'

Step 5 – 'What do you need to do now to make things right?'

Activity Idea: Treasure Hunt!

The sun is shining and it is time for a treasure hunt! Kids love treasure hunts especially if there is a treat at the end. You could make a matchbox treasure chest to find or go looking for things to spot all around you... a post box... a road sign... Not only is this free and super fun but it gives your children a chance to see writing all round them which is great for development, practice their reading and provides opportunity for lots of lovely chat.



Carer's week: 9th - 15th June

EIFAs work in partnership with Centre 33 to support Young Carers in our school communities. Young carers are children under 18 with caring responsibilities. Visit [Caring - Centre 33](https://www.caring-centre33.org.uk) to find out more about the support available for children with caring responsibilities.



Does your child have, or potentially have, an additional need or disability? **Pinpoint** (www.pinpoint-cambs.org.uk) have lots of information, advice and tips. For **Cambridgeshire's Local Offer** go to www.cambridgeshire.gov.uk/residents/children-and-families/local-offer

Contact me directly on ☎ 07879 426 947 or
✉ Emily.Norman@cambridgeshire.gov.uk