



Ramsden Hall Academy

Statement of Purpose

Ramsden Hall Academy (RHA) is a day and residential special school for boys aged 10 to 16 years who have a wide range of Social, Emotional and Mental Health (SEMH) needs and will all have an Educational Health Care Plan (EHCP).

At RHA we admit up to 100 boys and are located in Ramsden Heath, near Billericay, Essex but our boys come from across Essex and beyond with transport provided by Essex or their local authorities.

At the time of writing the EHCP identified almost around 60% with Attention Deficit Hyperactivity Disorder, 37% on the Autistic Spectrum and the remainder with Oppositional Defiance Disorder or with Conduct Disorder, though many have co-occurrence of multi needs, commonly referred to as neurodiverse. As a result, we group our pupils according to need and learning styles in all areas. Many pupils have complex needs and come from a variety of backgrounds, but all have experienced some form of disadvantage and trauma, either within their families, or through their experience of education.

Everything we do at the academy, and in the residential provision, is based on building positive relationships. Our dedicated and experienced staff team guide and support the pupils both in the academy and residential setting. From 2021 we extended this through specific therapeutic training, including Trauma Perceptive Practice (TPP). This is an Essex approach to understanding behaviour and supporting emotional wellbeing in children and young people enabling staff to recognise and support pupils within both the school and boarding provision. All residential staff undertake this training within their probationary period.

All staff also complete CPI (Crisis Prevention Institute) training which is a leading provider of evidence-based de-escalation training. CPI programs equip staff with crisis intervention and de-escalation skills that reduce challenging behaviour and help prevent future incidents.

We aim to nurture confidence and give our pupils the chance to succeed where previously they may have been at risk of not achieving their potential, to fill the gaps from their primary education and to prepare them for life in the adult world.

We provide part-time counsellors to pupils with additional need who spend time getting to know the pupil and offer an individual package of support.

In April 2021 an extension was complete to the Academy which added to the existing main building, Academy offices and learning areas with the addition of therapy rooms, access to education, ready to learn area, additional classrooms, reception and office areas, meeting rooms and library. The main teaching block was constructed in 2009 plus the heritage building and out buildings house design technology classroom, gym and animal care rooms. This is all set in 14 acres of grounds which includes a playing field, hard play areas, outdoor gym, swimming pool, and woodland.

Pupils in Years 6-7 begin their school life in the Redwood area with staff that come to Redwood to guide their transition from primary to secondary education. They then benefit from our nurture base within our Ready to Learn programme where English, Maths, Humanities, Life Skills and Forest schools are delivered through a thematic, project based approach up to year 8. In addition to this, and for all years, we provide a range of trips and off-site activities, as well as the chance for older pupils to complete work experience.

We provide a safe, secure environment where pupils are cared for, valued, respected, challenged where appropriate, and supported to achieve and make positive progress. We believe that every student can have, and is entitled to, a positive future, and so the academy offers a variety of academic and vocational qualifications to ensure that all pupils can achieve at their individual level and access their chosen destinations after Year 11.

In the last five years every student that has completed Year 11 has gone onto a college placement or linked to a full time apprenticeship. Our curriculum is flexible and is designed around student needs and interests with a practical element wherever possible to support pupils with neurodiverse needs. Any of the pupils demonstrating the skills and attainment required to successfully reintegrate into a mainstream school are supported in the transition.

Our academy staffing includes the Head Teacher, Senior Leadership Team, qualified teachers, instructors, HLTA's and LSA'S, engagement team, safeguarding team, administration team, catering team, building and facilities team and the Residential team.

We work in close partnership with our family of academy's within Parallel Learning Trust (PLT), and are members of the Essex Special Schools Education Trust.

The academy is also a registered charity. PTFA Charity Number 1165446.

Residential

The strong bond between Residential Care and Academy is a key feature of our 24-hour curriculum. It allows pupils to benefit from both the educational and social experiences of academy life.

The residential provision, called Ramsden Lodge, is currently rated "Outstanding" by Ofsted and has facilities for up to 40 boys at a time or 40% of the academy pupils. The provision is a 'flexi boarding' option for the boys and their families, in consultation and agreement with the academy, however all year 6 & 7, and their parents are encouraged to consider boarding, while all pupils are positively encouraged to give boarding a try even if they initially chose not to. We have an emphasis on social interaction to support routines and life learning to encourage compassion, kindness, hope, connection and belonging. We try our best to make sure boarding is fun plus we give the boys appropriate structured freedom to interact with their boarding peers. We focus on the development of social skills and emotional wellbeing and residential pupils consistently show improved outcomes in terms of both attendance, academic achievement and social skills.

Historically, school attendance has been low for many of our pupils though it increases to over 90% when they become, and remain residential pupils.

Residential pupils benefit from increased confidence, improved social skills, the feeling of being part of a social group and acceptance from their peer group,

In April 2021 the purpose-built residential building, Ramsden Lodge, was complete and in May 2021 we were able to move in. Our building consists of 40 beds, 24 in single en-suite bedrooms including a few en-suite accessible bedrooms, plus 8 twin bedrooms. In addition, there are four lounges with Large TV, sofas and kitchen areas, plus a cooking and quite lounge, an American style 50's diner, cinema room and a games / senior room. Staff also have two sleep in rooms, two offices and a staff meeting room. There is internal CCTV in the residential corridors plus CCTV and audio recording

around the external areas of Ramsden Lodge. Please feel free to speak to the Head of Care if you have any questions or worries about this.

Bedroom doors have door sensors to monitor them being opened, once each student has settled for the night, to alert the night awake staff should a pupil need support.

The Residential team are expected to undertake all training that is offered to the academy teaching staff plus there is also a robust induction programme especially for the residential team, with additional training where required. With the training received, in particular the Trauma Perceptive Practice, this gives all staff the foundation knowledge to give the best possible service to the residential pupils.

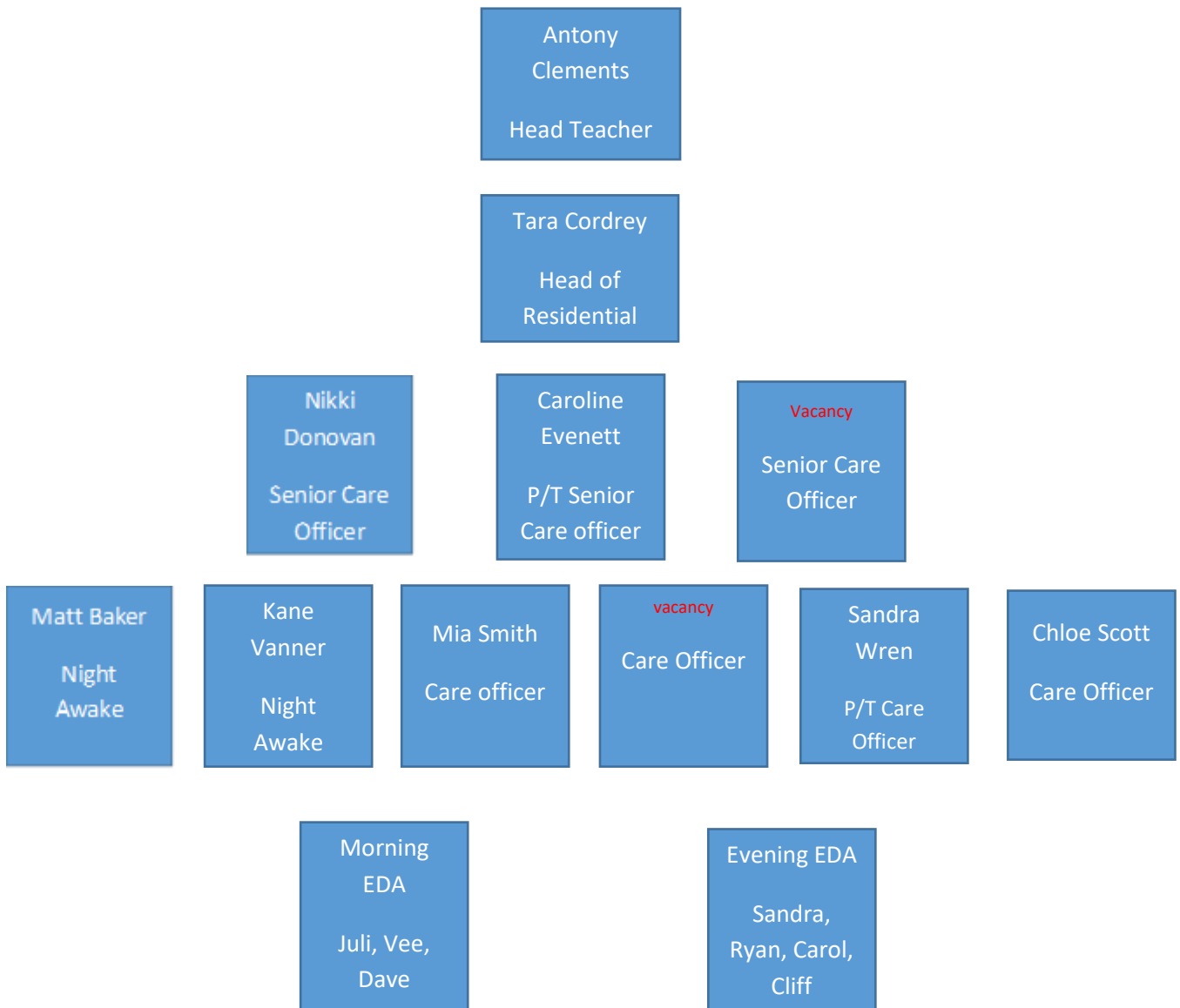
The Head of Residential Care has completed level 3, level 4 and Registered Managers Award, plus Level 7 Diploma in Health and Social Care Management. All staff have completed their level 3 in caring for children and young people, except those still in their probation period or those that are currently on the course.

The residential staff lead the Family Hub which enables experienced staff to support families by sharing experiences and ideas of positive routines to gain individualised support for their son.

The Residential team is made up of a Head of Residential Care, Senior Care officers, Care officers and Night Awake officers all of whom are experienced in their field or being guided by experienced staff. Residential staff are supervised at least on a ½ termly basis, or more frequently if they are still within their probationary period, by experienced and senior staff who have been trained by the Head of Residential Care in supervision.

Care staff are also joined by academy day staff each evening and morning to give support and consistency to and from the school day.

Residential staff structure and line Management



The academy and residential provision believe that working together we will:

Give all our pupils and their families the hope, compassion, experience and qualifications to enable them to take their place in the world.

What we will aim to do as an Academy and Residential Provision:

We will provide a safe, secure environment where pupils are valued, respected, challenged and supported to achieve and make progress.

Through our actions we will engage and support pupils who are:

- Respectful of themselves, each other and the academy
- Trustworthy, polite, honest and helpful
- Tolerant of others, open minded and without prejudice
- Resilient, determined and have a strong work ethic
- Responsible, independent and supportive of each other
- Empathetic, thoughtful, compassionate and caring
- Good communicators who are equally good as leaders, as they are team players
- Confident, having both self-belief and high aspirations
- Good role models

Ramsden Hall Academy Mission Statement

We aim to give all our pupils and their families the **hope, compassion, experience and qualifications** to enable them to **take their place in the World.**

We will build their skills and confidence so that they can learn to recognise their emotions, self-regulate, and develop strategies to express themselves safely ensure that everyone is seen and known as an individual, and offer them tailored pathways to meet their individual goals.

We will do this by ensuring:-

We are Respectful

We are Resilient

We Reflect

We Repair

We hope that you enjoy our Academy.