

YEAR 9 OPTIONS

2025

CONTENTS

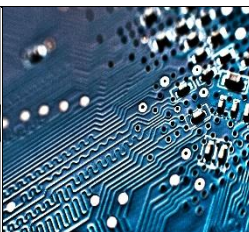
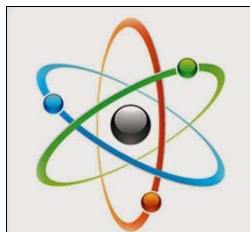
The Options Process	2
Choosing your Options	3-5

CORE SUBJECTS

English	6
Maths	7
ICT	8
Life Skills	9
Core PE	10

OPTION SUBJECTS

Animal Care	11
Art and Design	12
Business Studies	13
Construction	14
Design and Technology	15
Food Science	16
Health and Fitness	17
History	18
Horticulture	19
Physical Education	20
Religious Studies	21
Science	22



THE OPTIONS PROCESS STEP-BY-STEP

In order to make the best choice of subjects to study in Years 9, 10 and 11, we suggest you follow the 5 steps listed below:

- STEP 1** Take time to read this booklet and consider which subjects you would like to study next year.

- STEP 2** Discuss the options that are open to you with parents or carers.

- STEP 3** If you have questions about subject choices speak to a member of staff from your mentor group.

- STEP 4** Return the completed Option Choices Form at the back of this booklet to Mr Stanford by Friday 23rd May

Dear Student

Over the next few weeks, you will need to make some important decisions. The subjects you choose can have an impact not just on your time in school but also about opportunities for the future.

Core Subjects

The following subjects are our core subjects; this means that everyone will study them:

- English
- Maths
- ICT
- Life Skills
- PE(core)

Options

You will be asked to choose 4 Option subjects and 1 reserve, putting them in rank order. At least one of your top 4 choices must come from our science option block:

- Science - GCSE
- Animal Care – NCFE Level 1 or 2 Award
- Horticulture- NCFE Level 1 or 2 Award
- Food Science NCFE Level 1/2 Certificate

Your other 3 choices and your reserve can come from either the science block or from the following subjects:

- History- GCSE
- Religious Studies – GCSE
- Art and Design – GCSE
- PE – NCFE Level 1/2 Certificate
- Construction –NCFE Level 1 or 2 Award
- Design and Technology - GCSE
- Health and Fitness - Princes Trust Level 2 Award or Certificate
- Business Studies - GCSE

What do I need to think about when making my choices?

What are my strengths and skills now?
What strengths and skills do I need to develop more?
Which subjects engage me the most?
What are my long-term plans?
What type of learner am I?
Why might I consider a vocational option?
What do I want to do after Year 11?
Do I have a particular career/job in mind?

Do choose

- subjects that you enjoy
- subjects that you are good at
- subjects that will help you in the future (job or college course)

Do not choose

- subjects because your friend wants to do them
- subjects because you like the teacher

Still unsure?

This is perfectly understandable!

You may need to make sure you have a *broad range* to keep your *options open* so you can demonstrate a *wide range of skills*.

If you enjoy a style of learning that is more closely linked to professional training and practical ways of working, then Vocational Courses such as NCFE and AIM certificates should be part of your program.

Key Information

GCSE

GCSE stands for General Certificate of Secondary Education. These are two or three year courses worth 1 or, in some cases, 2 grades at 9-1 which will normally be assessed in year 11, this is called linear assessment. There is always a final examination at the end of the course.

Vocational Courses

Vocational Courses (BTEC, NCFE) will be awarded at Levels 1 or 2 often through the development of a student portfolio of evidence although some units may be assessed by an exam.

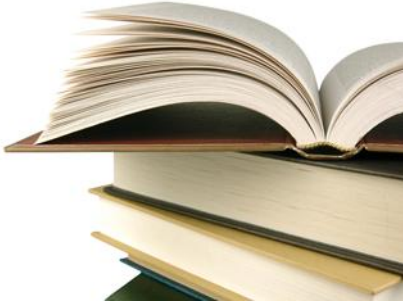
Vocational courses continue to have an important role for many students, offering breadth and contrast and a more practical, professional work-based approach. Qualifications are graded and contain both internally and externally assessed elements.

Participation of young people: education, employment and training

All young people will be expected to stay in some form of learning until they are aged 18. This does not necessarily mean young people must stay in school beyond the age of 16; they will be able to choose from one of the following options:

- Sixth Form College
- Further Education College
- Apprenticeship
- Work with training
- Independent providers
- Self-employment with training
- Volunteering with training

This is an exciting time for you. Please consider your choices carefully and complete the form at the back of the booklet.



Core Subject

English Language

The course enables students to read a wide range of texts fluently and with good understanding and write effectively using Standard English appropriately. Students will also listen to and understand spoken language, and use spoken Standard English effectively.

In Year 9 students will work towards completion of an Entry Level qualification in preparation for moving on to the Functional Skills or GCSE course in Year 10.

Assessment

Entry Level students complete a portfolio of work that is assessed by the class teacher and moderated by the exam board.

Functional Skills is assessed by two short externally set exams and two controlled Speaking and Listening internal assessments.

For GCSE, assessment is by two externally set exams at the end of the course.

Yr 9 Foundation:

Edexcel Entry Level Certificate

Yr 10-11 Progression:

Edexcel Functional Skills Level 1 or 2

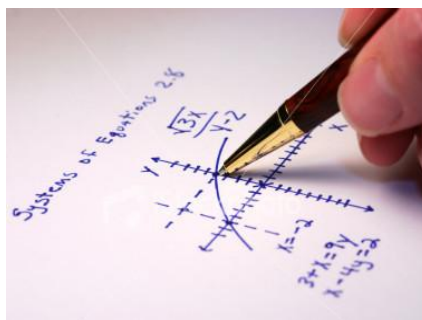
AQA GCSE English Language

Additional Qualifications:

Confident readers and writers may be offered the chance to complete a GCSE in English Literature

Post-16 Progression:

English is an essential qualification for moving on to post-16 Level 2 and 3 courses



Core Subject

Mathematics

Overview

Entry Level and Functional Skills
Mathematics promotes mathematical thinking and transferable skills. Students learn Maths that is useful in everyday situations and the world of work.

GCSE students will go on to develop their mathematical skills in six main areas:

1. Number
2. Algebra
3. Ratio, Proportion and rates of change
4. Geometry and measures
5. Probability
6. Statistics

Assessment

Entry Level students complete a portfolio of work that is assessed by the class teacher and moderated by the exam board.

Functional Skills assessment is by one externally set exam.

GCSE assessment is by two externally set exams at the end of the course.

Yr 9 Foundation:

Edexcel Entry Level Certificate

Yr 10-11 Progression:

AQA Functional Skills Level 1 or 2

AQA or Edexcel GCSE in Mathematics

Post-16 Progression:

Mathematics is an essential qualification for moving on to post-16 Level 2 and 3 courses



Core Subject

ICT

Overview

These vocational courses take an engaging and practical approach to learning.

The courses reflect and provide students with a solid understanding of the subject, which they can use in their personal and professional lives. The courses cover everyday use of ICT from PCs to smartphones, and the themes covered are business use, creativity and technical skills.

Assessment

For Digital Functional Skills students take an online assessment when they are judged to be ready. For Cambridge Nationals students complete internally assessed coursework and an external examination at the end of the course.

Yr 9 Foundation:

Edexcel Entry Level 3
or Level 1 Digital
Functional Skills

Yr 10/11 Progression:

OCR Cambridge
Nationals Level 1/2
Certificate

Additional Qualifications:

NCFE Level 1/2 units
in design, media and
technology

Post 16 Progression

Successful completion
of a Cambridge
Nationals ICT course
can lead on to Level 3
ICT courses, although
the skills learnt can be
applied to all walks of
life and learning.



Core Subject

Life Skills

Overview

Life Skills education can be defined as a planned programme of learning through which children and young people acquire the knowledge, understanding and skills they need to manage their lives, now and in the future. The Prince's Trust qualification supports the development of a wide range of work and life skills.

Assessment

Prince's Trusts Awards and Certificates are assessed through a portfolio of evidence produced by the learner. The portfolio will be internally assessed and externally moderated by the exam board.

Yr 9 Foundation:

Prince's Trust Award in Personal Development and Employability

Yr 10-11 Progression:

Prince's Trust Certificate in Personal Development and Employability

Additional Qualifications:

ASDAN Beliefs and Values Short Course

NCFE Level 2 Principles of Equality and Diversity

Post 16 Progression:

Students can acquire valuable life skills that help prepare them for future studies, the workplace and their personal lives.



Core Subject

PE

Overview

The core PE curriculum aims to

- promote enjoyment of sports
- encourage students to strive for, and to achieve their potential;
- motivate students to wish to participate in recreation outside school and after leaving school;
- promote a healthy lifestyle
- promote social interaction and communication skills
- Participate in a wide range of sporting activities
- Development of leadership skills

The programme will build upon existing knowledge, skills and understanding and encourages you to take a more active role in the organisational, safety and health-related aspects of physical activity.

Assessments

Students will be assessed through a skills matrix in order to monitor their progression and to see how to help the student improve.

Yr 9 Foundation:

Non – exam based

Yr 10-11 Progression:

Non-exam based

Post 16 Progression

An active lifestyle, as promoted through the core PE lessons, is an essential component of your future wellbeing.



Option Subject

Animal Care

Overview

This broad-based course is designed to be the first step to a career in animal care. It is suitable for anyone who would like to progress on to higher vocational qualifications related to animal management.

This course will give you the opportunity to study a wide range of animal care topics including:

- Animal Accommodation
- Practical Animal Feeding
- Animal Health and Welfare
- Animal Behaviour and Handling
- Basic Principles of Animal Biology
- Care of Exotic Animals

Assessment

This is a vocational based course with practical elements and assessments built into it. Assessment will be through continuous assignments taught through lessons, practical activities, presentations, and animal handling demonstrations.

Yr 9 Foundation:

ASDAN Animal Care
Short Course

Yr 10-11 Progression:

NCFE Level 1 or 2
Award in Occupational
Studies for the
Workplace

Post 16 Progression

Successful completion
can lead to specialised
Level 2 Animal Care
courses, or
employment at a
foundation level in the
animal care industry.



Option Subject

Art and Design

Overview

Students of our Edexcel GCSE in Art and Design will develop the creativity, technical skills, aesthetic understanding and cultural knowledge required to express and interpret original ideas through art, craft and design.

Assessment

Entry Level students complete a portfolio of work and an externally set assignment brief.

GCSE students complete a Controlled Exam assessed by the teacher and moderated by the exam board Edexcel.

Yr 9 Foundation:

Students start to learn the skills and theory essential for completing the course.

Yr 10-11 Progression:

Edexcel GCSE in Art and Design

Additional Qualifications:

Entry Level qualifications in Photography, Textile Design or 3D Design

Post 16 Progression

Successful GCSE students may move on to Level 3 qualifications in Art and Design, Fine Art or Photography



Option Subject

Business Studies

Overview

This GCSE is designed to give you a broad understanding of business and commerce. Subject content includes; business administration skills, business management, understanding different business organisations, economic factors effecting businesses.

Assessment

Assessment will be through two written exams at the end of the course.

Yr 9 Foundation:

Students start to learn the skills and theory essential for completing the course.

Yr 10-11 Progression:

Edexcel GCSE in Business Studies

Post 16 Progression

Successful completion of a GCSE could lead on to a Level 2 or 3 qualification at college.



Option Subject

Construction

Overview

In Year 9 students are building the essential skills and knowledge. All students undertake a compulsory Health and Safety unit to ensure safe working practices and self-awareness. The course has a practical bias engaging learners in learning through doing where possible. Years 10 and 11 develops skills further and allows for more practical assessments to take place.

Assessment

Assessment will be through continuous assignments taught through lessons, practical activities, presentations and coursework.

Yr 9 Foundation:

ASDAN Short Course in Construction.

Yr 10-11 Progression:

NCFE Level 1 or 2 Award in Occupational Studies for the Workplace.

Additional Qualifications:

Health and Safety in the Workplace

Post 16 Progression

Successful completion of a Level 1 or 2 course can lead to specialised chosen trade study, employment at a foundation level in construction or application for an apprenticeship.



Option Subject

Design and Technology

Overview

GCSE Design and Technology helps students develop the ability to design and make products with creativity and originality, using a range of materials and techniques.

This course requires students to develop their knowledge of woods, metals, plastics and composite materials. Other materials may also be used and the use of new technologies is also encouraged.

Assessment

This course has fifty per cent controlled assessment in order to recognise the importance of practical work within this subject.

Yr 9 Foundation:

Students start to learn the skills and theory essential for completing the course.

Yr 10-11 Progression:

AQA GCSE Design and Technology

Additional Qualifications:

Level 2 Health and Safety in the Workplace

Post 16 Progression

The course provides an excellent route into GCE A Level Product Design.



Option Subject

Food Science

Overview

The GCSE Catering course provides a vocationally related qualification that covers Levels 1 and 2 (Foundation and Intermediate) of the National Qualification Framework.

A course in Catering offers a unique opportunity in the curriculum for students to develop their knowledge and extend their skills in a vocational context.

Assessment

NCFE assessment is through completion of practical tasks and supporting coursework. GCSE assessment is through practical assessment and exam.

Yr 9 Foundation:

NCFE Level 1 Award
Occupational Studies
for the Workplace

Yr 10-11 Progression:

NCFE Level 1/2
Certificate in Food and
Cookery Skills or OCR
GCSE Food
Preparation and
Nutrition

Additional Qualifications:

Health and Hygiene
Certificate

Post 16 Progression

Successful completion
of a Level 2 Certificate
can lead to specialised
Level 3 catering
courses, employment
at a foundation level in
catering or application
for an apprenticeship.



Option Subject

Health and Fitness

Overview

An understanding of health and fitness can help you progress in a variety of different sectors and job roles; nutrition, personal training, sports therapy.

Students on this course will learn about the elements of a healthy lifestyle. The importance of nutrition and how to plan and deliver a personal fitness programme will form part of the course.

Assessment

Assessment will be through continuous assignments taught through lessons, practical activities, presentations and coursework.

Yr 9 Foundation:

Preparation for Level 1/2 course

Yr 10-11 Progression:

NCFE Level 1/2
Certificate Health and Fitness

Prince's Trust
Certificate in Personal Development and Employability

Additional Qualifications:

Shallow Pool Rescue Award

Basic First Aid

Post 16 Progression

If you choose to study health and fitness, there are a number of routes you can take to



Option Subject

History

Overview

Students of Entry Level Certificate in History will develop their knowledge and understanding of the past, investigate historical events, people and developments, and use historical sources to answer key questions.

GCSE students complete a thematic study over time on either crime or medicine, followed by a period study and British depth study chosen from students' area of interest. Finally, students undertake a modern depth study of either Nazi Germany or the USA's conflicts, home and abroad, between 1954 and 1975.

Assessment

For Entry Level students complete three pieces of assessed written work

GCSE is assessed through three written exams at the end of the course

Yr 9 Foundation:

OCR Entry Level Certificate

Yr 10-11 Progression:

OCR GCSE in History

Post 16 Progression

Successful GCSE History students may go on to study History at A Level.



Option Subject

Horticulture

Overview

This Level 2 Certificate is designed to give you a broad understanding of horticulture. It provides a balance of both practical and theoretical instruction.

Assessment

Assessment will be through continuous assignments taught through lessons, practical activities, presentations and coursework.

Yr 9 Foundation:

Students start to learn the skills and theory essential for completing the course.

Yr 10-11 Progression:

NCFE Level 2 Award
or AIM Level 1
Certificate in Skills for
Working in Horticulture
Industries

Additional Qualifications:

Health and Safety in
the Workplace

Post 16 Progression

Successful completion of Level 1 Horticulture can lead to Level 2 courses in land-based sciences, employment at a foundation level in horticulture or application for an apprenticeship.



Overview

The key concepts of the course include competence in sport, performance analysis, creativity and healthy, active lifestyles, sport psychology, anatomy and physiology. Students will be expected to develop skills in a range of different sports while also evaluating their own performance and identifying ways in which to improve their own lifestyle.

Assessment

A range of different qualifications will be either practically assessed, observation analysis, coaching, self-evaluation, course work and written exams depending on the qualification.

Yr 9 Foundation:

Students start to learn the skills and theory essential for completing the course.

Yr 10-11 Progression:

OCR Entry Level in PE

NCFE Level 1/2
Certificate

Additional Qualifications:

Specific coaching courses

Post 16 Progression

Successful completion can lead to further education courses, sports coaching or employment into the sports industry



Option Subject

Religious Studies

Overview

Students will learn how religion, philosophy and ethics form the basis of our culture, and develop valuable skills that will help prepare them for further study.

Themes studies will include relationships, conflicts, crime and punishment, human rights and social justice.

Assessment

Entry Level Certificate is assessed through externally set assessment tasks completed throughout the course.

GCSE Religious Studies is assessed by two written exams at the end of the course.

Yr 9 Foundation:

Students start to learn the skills and content essential for completing the course.

Yr 10-11 Progression:

Edexcel GCSE in Religious Studies

Post 16 Progression

Successful GCSE students may go on to study Ethics, Philosophy or Religious Studies at A Level.

Option Subject



Science

Overview

Students study all three major areas of science: Biology, Chemistry, Physics. Students will carry out scientific investigations throughout the course. This course focuses on developing the skills needed by employers such as: problem solving, team working and communication skills using a range of technologies. The course has practical bias engaging learners in learning through doing where possible. Year 10 develops skills further and assessments that are more practical will take place.

Assessment

Entry Level students sit a maximum of 6 small assessment tests (one test at the end of each unit). The combined score will determine the entry level awarded.

Students will work towards achieving an entry level in science in year 9 and 10. In Year 11 students will have a choice of which GCSE route they would like to take and progress towards exams for a GCSE in their chosen Science.

Yr 9 Foundation:

Edexcel Entry Level Certificate

Yr 10/11 Progression:

Entry Level in Further Science

GCSE choices:

GCSE in Chemistry

GCSE in Biology

GCSE Physics

Post 16 Progression

Successful completion of this course can lead to further study in any science based course including A levels. It is recognised by all establishments as a good grounding for any further study.

Options Choices Form

Please complete and return this form by Friday 23rd May

Name		Mentor Group	
------	--	--------------	--

	Subjects	Rank 1-5 1= top choice 5 = reserve
SCIENCE OPTION at least one of these subjects must be in your 1-4 choices	Science	
	Horticulture	
	Animal Care	
	Food Science	
OPEN OPTION Choose up to 3 subjects + 1 reserve from these subjects	Art & Design	
	Business Studies	
	Construction	
	Design & Technology	
	Health and Fitness	
	History	
	PE (GCSE)	
	Religious Studies	