

# YEAR 8 OPTIONS

## 2019

### CONTENTS

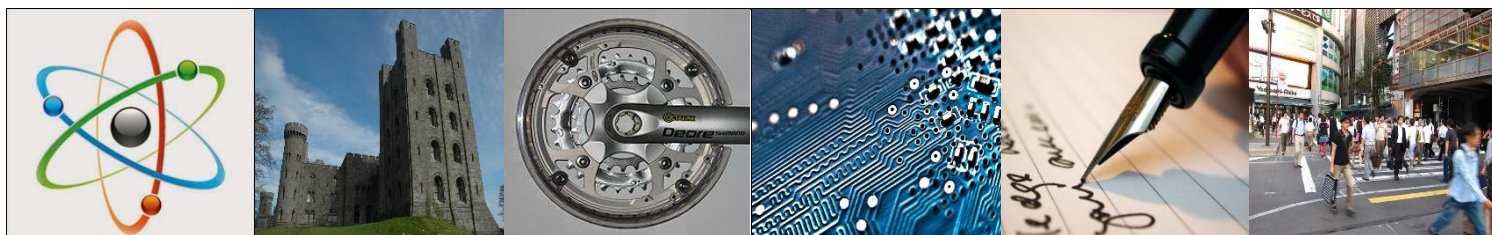
The Options Process	2
Choosing your Options	3-5

### CORE SUBJECTS

English	6
Maths	7
Computing	8
Life Skills	9
Core PE	10

### OPTION SUBJECTS

Animal Care	11
Art and Design	12
Construction	13
Design and Technology	14
Food Science	15
Health and Fitness	16
History	17
Horticulture	18
Physical Education	19
Religious Studies	20
Science	21



## THE OPTIONS PROCESS STEP-BY-STEP

In order to make the best choice of subjects to study in Years 9, 10 and 11, we suggest you follow the 5 steps listed below:

- STEP 1** Take time to read this booklet and consider which subjects you would like to study next year.
  
- STEP 2** Come to the Year 8 OPTIONS ASSEMBLY in Room 7 on Friday 24th May at 12.30pm to have the whole process explained and to find out about option subjects in Year 9.
  
- STEP 3** Take this booklet home and discuss the options that are open to you with parents or carers.
  
- STEP 4** Complete the Options Application Form (separate sheet).
  
- STEP 5** Return the Options Application Form to Mr Stanford by 1.00pm on Friday 7<sup>th</sup> June

Dear Student

Over the next few weeks, you will need to make some important decisions. The subjects you choose can have an impact not just on your time in school but also about opportunities for the future. There will be information in lessons and tutor time. All this information is also available in a booklet for you to look at in your own time. We have put aside this time to talk to you and your parents about what you want and we will do our best to give you a personal pathway that is as close to your choices as we can.

## Core Subjects

**The following subjects are our core subjects; this means that everyone will study them:**

- English P<sub>8</sub>
- Maths P<sub>8</sub>
- Computer Science P<sub>8</sub>
- Life Skills
- PE(core)

## Options

**You will be asked to choose 4 Option subjects and 1 reserve, putting them in rank order. At least one of your top 4 choices must come from our science option block:**

- Science - GCSE P<sub>8</sub>
- Animal Care - City & Guilds
- Horticulture- NCFE Level 1/2 Certificate
- Food Science GCSE P<sub>8</sub> /BTEC

**Your other 3 choices and your reserve can come from the either the science block or from the following subjects:**

- History- GCSE P<sub>8</sub>
- Religious Studies – GCSE P<sub>8</sub>
- Design and Technology- GCSE P<sub>8</sub>
- Art and Design – GCSE P<sub>8</sub>
- PE – GCSE P<sub>8</sub>
- Construction – NCFE Level 1/2 Certificate
- Health and Fitness Princes Trust Level 2 Certificate

## What do I need to think about when making my choices?

What are my strengths and skills now?  
What strengths and skills do I need to develop more?  
Which subjects engage me the most?  
What are my long-term plans?  
What type of learner am I?  
Why might I consider a vocational option?  
What do I want to do after Year 11?  
Do I have a particular career/job in mind?

## Where can I get help?

It is important that you talk to people who can help e.g. your parents/carers, your form tutor, your teachers, the Engagement Team (Mandy McIver), the Careers Service, your Engagement Manager.

### Do choose

- subjects that you enjoy
- subjects that you are good at
- subjects that will help you in the future (job or college course)

### Do not choose

- subjects because your friend wants to do them
- subjects because you like the teacher

### Still unsure?

This is perfectly understandable!

You may need to make sure you have a *broad range* to keep your *options open* so you can demonstrate a *wide range of skills*.

If you enjoy a style of learning that is more closely linked to professional training and practical ways of working, then Vocational Courses such as City & Guilds and BTECs should be part of your program.

## Key Information

### New grading system

The government has introduced a new grading system to replace the old GCSE A\*-G grades with a 9 – 1 grading system.

### GCSE

GCSE stands for General Certificate of Secondary Education. These are two or three year courses worth 1 or, in some cases, 2 grades at 9-1 which will normally be assessed in year 11, this is called linear assessment. Controlled assessment often counts for a certain percentage of the final grade though this percentage varies significantly between subjects. There is always a final examination at the end of the course.

## Vocational Courses

Vocational Courses (BTEC, City & Guilds) will be awarded at Levels 1 or 2 often through the development of a student portfolio of evidence although some units may be assessed by an exam.

Vocational courses continue to have an important role for many students, offering breadth and contrast and a more practical, professional work-based approach. Qualifications are graded and contain both internally and externally assessed elements.

## Raising the Participation Age

Raising the Participation Age is a Government policy stating that all young people will be expected to stay in some form of learning until they are aged 18. Raising the Participation Age does not necessarily mean young people must stay in school beyond the age of 16; they will be able to choose from one of the following options:

- School Sixth Form
- Sixth Form College
- Further Education College
- Apprenticeship
- Work with training
- Independent providers
- Self-employment with training
- Volunteering with training

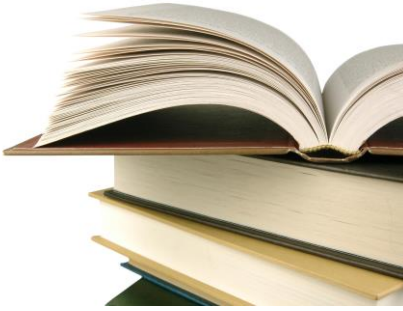
## Progress 8

The government has introduced a new measure of overall progress called Progress 8. This takes the grades from GCSEs and works out an average of the best 8. The new measure will be based on students' progress measured across eight subjects: English; Mathematics; three subjects from Sciences, Computer Science, Geography, History and Languages; and three further subjects, which can be from any other approved qualification. In the calculation, English and Maths are counted twice and not all subjects are included. Those subjects included are indicated with the symbol **P<sub>8</sub>**.

This is an exciting time for you. Please consider your choices carefully and complete the form at the back of the booklet.

Thank you.

**Mrs E Baker**  
Headteacher



## Core Subject

# English Language

### Overview

The course enables students to read a wide range of texts fluently and with good understanding and write effectively using Standard English appropriately. Students will also listen to and understand spoken language, and use spoken Standard English effectively.

In Year 9 students will work towards completion of a Step Up to English qualification in preparation for moving on to the GCSE course in Year 10.

### Assessment

Step Up to English students complete three externally set non-exam Reading and Writing assessments and two Speaking and Listening assessments.

Functional Skills is assessed by two short externally set exams and two controlled Speaking and Listening internal assessments.

For GCSE, assessment is by two externally set exams at the end of the course.

### Yr 9 Foundation:

AQA Step Up to English

### Yr 10-11 Progression:

Edexcel Functional Skills Level 1 or 2

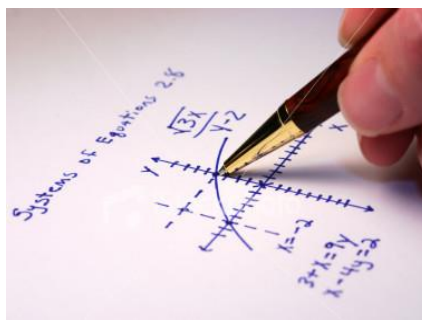
Edexcel GCSE English Language

### Additional Qualifications:

Confident readers and writers may be offered the chance to complete a GCSE in English Literature

### Post-16 Progression:

English is an essential qualification for moving on to post-16 Level 2 and 3 courses



## Core Subject

# Mathematics

## Overview

Entry Level and Functional Skills Mathematics promotes mathematical thinking and transferable skills. Students learn Maths that is useful in everyday situations and the world of work.

GCSE students will go on to develop their mathematical skills in six main areas:

1. Number
2. Algebra
3. Ratio, Proportion and rates of change
4. Geometry and measures
5. Probability
6. Statistics

## Assessment

Entry Level students complete a portfolio of work that is assessed by the class teacher and moderated by the exam board.

Functional Skills assessment is by one externally set exam.

GCSE assessment is by two externally set exams at the end of the course.

### Yr 9 Foundation:

AQA Entry Level Certificate

### Yr 10-11 Progression:

AQA Functional Skills Level 1 or 2

AQA or Edexcel GCSE in Mathematics

### Post-16 Progression:

Mathematics is an essential qualification for moving on to post-16 Level 2 and 3 courses



## Core Subject

# Computing

### Overview

These are vocational courses that take an engaging and practical approach to learning. The courses reflect and provide students with a solid understanding of the subject which they can use in their personal and professional lives. The courses cover everyday use of ICT from PCs to smartphones, and the themes covered are business use, creativity and technical skills.

### Assessment

For Cambridge Nationals students complete internally assessed coursework and an external examination at the end of the course.

#### Yr 9 Foundation:

OCR Cambridge  
Nationals Level 1/2  
Award

#### Yr 10/11 Progression:

OCR Cambridge  
Nationals Level 1/2  
Certificate

#### Additional Qualifications:

NCFE Level 1/2 units  
in design, media and  
technology

#### Post 16 Progression

Successful completion of a Cambridge Nationals ICT course can lead on to Level 3 ICT courses, although the skills learnt can be applied to all walks of life and learning.





## Core Subject

# Life Skills

### Overview

Life Skills education can be defined as a planned programme of learning through which children and young people acquire the knowledge, understanding and skills they need to manage their lives, now and in the future. The Prince's Trust qualification supports the development of a wide range of work and life skills.

### Assessment

Prince's Trusts Awards and Certificates are assessed through a portfolio of evidence produced by the learner. The portfolio will be internally assessed and externally moderated by the exam board.

#### **Yr 9 Foundation:**

Prince's Trust Award in Personal Development and Employability

#### **Yr 10-11 Progression:**

Prince's Trust Certificate in Personal Development and Employability

#### **Additional Qualifications:**

NCFE Level 2 Principles of Equality and Diversity

#### **Post 16 Progression:**

Students can acquire valuable life skills that help prepare them for future studies, the workplace and their personal lives.



## Core Subject

# PE

### Overview

The core PE curriculum aims to

- promote enjoyment of sports
- encourage students to strive for, and to achieve their potential;
- motivate students to wish to participate in recreation outside school and after leaving school;
- promote a healthy lifestyle
- promote social interaction and communication skills
- Participate in a wide range of sporting activities
- Development of leadership skills

The programme will build upon existing knowledge, skills and understanding and encourages you to take a more active role in the organisational, safety and health-related aspects of physical activity.

### Assessments

Students will be assessed through a skills matrix in order to monitor their progression and to see how to help the student improve.

### Yr 9 Foundation:

Non – exam based

### Yr 10-11 Progression:

Non-exam based

### Post 16 Progression

An active lifestyle, as promoted through the core PE lessons, is an essential component of your future wellbeing.



## Option Subject

# Animal Care

### Overview

This broad-based course is designed to be the first step to a career in animal care. It is suitable for anyone who would like to progress on to higher vocational qualifications related to animal management.

This course will give you the opportunity to study a wide range of animal care topics including:

- Animal Accommodation
- Practical Animal Feeding
- Animal Health and Welfare
- Animal Behaviour and Handling
- Basic Principles of Animal Biology
- Care of Exotic Animals

### Assessment

This is a vocational based course with practical elements and assessments built into it. Assessment will be through continuous assignments taught through lessons, practical activities, presentations, and animal handling demonstrations.

#### Yr 9 Foundation:

Students start to learn the skills and theory essential for completing the course.

#### Yr 10-11 Progression:

City & Guilds Level 2 Certificate in Animal Care

#### Additional Qualifications:

Canine First Aid

#### Post 16 Progression

Successful completion can lead to specialised Level 3 Animal Care courses, or employment at a foundation level in the animal care industry.



## Option Subject

# Art and Design

### Overview

Students of our Edexcel GCSE in Art and Design will develop the creativity, technical skills, aesthetic understanding and cultural knowledge required to express and interpret original ideas through art, craft and design.

### Assessment

Entry Level students complete a portfolio of work and an externally set assignment brief.

GCSE students complete a Controlled Exam assessed by the teacher and moderated by the exam board Edexcel.

#### Yr 9 Foundation:

Students start to learn the skills and theory essential for completing the course.

#### Yr 10-11 Progression:

Edexcel GCSE in Art and Design

#### Additional Qualifications:

Entry Level qualifications in Photography, Textile Design or 3D Design

#### Post 16 Progression

Successful GCSE students may move on to Level 3 qualifications in Art and Design, Fine Art or Photography



## Option Subject

# Construction

### Overview

In Year 9 students are building the essential skills and knowledge. All students undertake a compulsory Health and Safety unit to ensure safe working practices and self-awareness. The course has a practical bias engaging learners in learning through doing where possible. Years 10 and 11 develops skills further and allows for more practical assessments to take place.

### Assessment

Assessment will be through continuous assignments taught through lessons, practical activities, presentations and coursework.

#### **Yr 9 Foundation:**

Students start to learn the skills and theory essential for completing the course.

#### **Yr 10-11 Progression:**

NCFE Level 2  
Certificate in  
Occupational Studies  
for the Workplace

#### **Additional Qualifications:**

Health and Safety in  
the Workplace

#### **Post 16 Progression**

Successful completion of a Level 2 course can lead to specialised chosen trade study, employment at a foundation level in construction or application for an apprenticeship.



## Option Subject

# Design and Technology

### Overview

GCSE Design and Technology: Resistant Materials helps students develop the ability to design and make products with creativity and originality, using a range of materials and techniques.

This course requires students to develop their knowledge of woods, metals, plastics and composite materials. Other materials may also be used and the use of new technologies is also encouraged.

### Assessment

This course has 60 per cent controlled assessment in order to recognise the importance of practical work within this subject.

#### Yr 9 Foundation:

OCR Entry Level Certificate

#### Yr 10-11 Progression:

AQA GCSE Design and Technology

#### Additional Qualifications:

NCFE Level 1 Unit Awards in Exploring Occupational Studies for the Workplace

Level 2 Health and Safety in the Workplace

Level 2 Fire Safety Principles

#### Post 16 Progression

The course provides an excellent route into GCE A Level Product Design.



## Option Subject

# Food Science

### Overview

The GCSE Catering course provides a vocationally related qualification that covers Levels 1 and 2 (Foundation and Intermediate) of the National Qualification Framework.

A course in Catering offers a unique opportunity in the curriculum for students to develop their knowledge and extend their skills in a vocational context.

### Assessment

BTEC assessment is through completion of a practical task and supporting coursework.

GCSE assessment is through a controlled assessment task and a written exam paper.

### Yr 9 Foundation:

BTEC Level 1/2 Home Cooking Skills

### Yr 10-11 Progression:

WJEC GCSE Catering

### Additional Qualifications:

NCFE Level 1 Food Preparation and Handling

Health and Hygiene Certificate

### Post 16 Progression

Successful completion of GCSE Catering can lead to specialised Level 3 catering courses, employment at a foundation level in catering or application for an apprenticeship.



## Option Subject

# Health and Fitness

### Overview

An understanding of health and fitness can help you progress in a variety of different sectors and job roles; nutrition, personal training, sports therapy.

Students on this course will learn about the elements of a healthy lifestyle. The importance of nutrition and how to plan and deliver a personal fitness programme will form part of the course.

### Assessment

Assessment will be through continuous assignments taught through lessons, practical activities, presentations and coursework.

#### Yr 9 Foundation:

Preparation for Level 1/2 course

#### Yr 10-11 Progression:

NCFE Level 1/2  
Certificate Health and Fitness

#### Additional Qualifications:

Shallow Pool Rescue Award

Basic First Aid

#### Post 16 Progression

If you choose to study health and fitness, there are a number of routes you can take to further your career such as college courses or apprenticeships





## Option Subject

# History

### Overview

Students of Entry Level Certificate in History will develop their knowledge and understanding of the past, investigate historical events, people and developments, and use historical sources to answer key questions.

GCSE students complete a thematic study over time on either crime or medicine, followed by a period study and British depth study chosen from students' area of interest. Finally, students undertake a modern depth study of either Nazi Germany or the USA's conflicts, home and abroad, between 1954 and 1975.

### Assessment

For Entry Level students complete three pieces of assessed written work

GCSE is assessed through three written exams at the end of the course

### Yr 9 Foundation:

OCR Entry Level Certificate

### Yr 10-11 Progression:

OCR GCSE in History

### Post 16 Progression

Successful GCSE History students may go on to study History at A Level.



## Option Subject

# Horticulture

### Overview

This Level 2 Certificate is designed to give you a broad understanding of horticulture. It provides a balance of both practical and theoretical instruction.

### Assessment

Assessment will be through continuous assignments taught through lessons, practical activities, presentations and coursework.

#### **Yr 9 Foundation:**

Students start to learn the skills and theory essential for completing the course.

#### **Yr 10-11 Progression:**

NCFE Level 2 Certificate in Occupational Studies for the Workplace

#### **Additional Qualifications:**

Health and Safety in the Workplace

Level 1 Woodland Management

#### **Post 16 Progression**

Successful completion of Level 2 Horticulture can lead to Level 3 courses in land based sciences, employment at a foundation level in horticulture or application for an apprenticeship.



## Option Subject

# Physical Education

### Overview

The key concepts of the course include competence in sport, performance analysis, creativity and healthy, active lifestyles, sport psychology, anatomy and physiology. Students will be expected to develop skills in a range of different sports while also evaluating their own performance and identifying ways in which to improve their own lifestyle.

### Assessment

A range of different qualifications will be either practically assessed, observation analysis, coaching, self-evaluation, course work and written exams depending on the qualification.

#### **Yr 9 Foundation:**

Sports leaders Level 1  
GCSE PE (Short Course)  
Preparation for IGCSE

#### **Yr 10-11 Progression:**

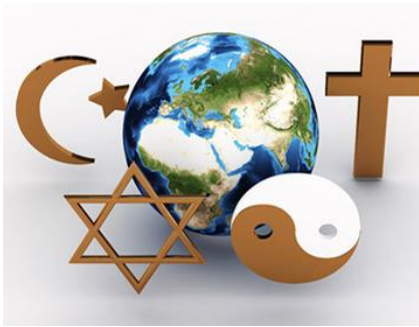
Sports Leaders Level 2  
Btec in Sport  
IGCSE PE

#### **Additional Qualifications:**

First Aid at Work  
Shallow Pool Rescue Award  
Specific coaching courses

#### **Post 16 Progression**

Successful completion can lead to further education courses, sports coaching or employment into the sports industry



## Option Subject

# Religious Studies

### Overview

Students will learn how religion, philosophy and ethics form the basis of our culture, and develop valuable skills that will help prepare them for further study.

Themes studies will include relationships, conflicts, crime and punishment, human rights and social justice.

### Assessment

Entry Level Certificate is assessed through externally set assessment tasks completed throughout the course.

GCSE Religious Studies is assessed by two written exams at the end of the course.

### Yr 9 Foundation:

Edexcel Entry Level Certificate

### Yr 10-11 Progression:

Edexcel GCSE in Religious Studies

### Post 16 Progression

Successful GCSE students may go on to study Ethics, Philosophy or Religious Studies at A Level.



## Option Subject

# Science

### Overview

Students study all three major areas of science: Biology, Chemistry, Physics. Students will carry out scientific investigations throughout the course. This course focuses on developing the skills needed by employers such as: problem solving, team working and communication skills using a range of technologies. The course has practical bias engaging learners in learning through doing where possible. Year 10 develops skills further and assessments that are more practical will take place.

### Assessment

Entry Level students sit a maximum of 6 small assessment tests (one test at the end of each unit). The combined score will determine the entry level awarded. There are two levels of Entry level science:

Entry level science

Entry level in further science.

Students will work towards achieving an entry level in science in year 9 and 10. In year 11 students will have a choice of which GCSE route they would like to take and progress towards exams for GCSE combined science (Single Award) or a GCSE in a single science from either Biology, Chemistry or Physics.

### Yr 9 Foundation:

Entry Level Certificate

### Yr 10/11 Progression:

Entry Level in Further Science

GCSE choices:

GCSE in combined science(single Award)

Or a single science (single award)

GCSE in Chemistry

GCSE in Biology

GCSE Physics

### Post 16 Progression

Successful completion of this course can lead to further study in any science based course including A levels. It is recognised by all establishments as a good grounding for any further study.

