

Year 11 (2018 V1)

13 students

- 9
- 8
- 7
- 6
- 5
- 4
- 3
- 2
- 1



(2018) KS4 Progress 5 Examination Analysis

Version: 2.1

AS Points: 2017

PLT Ramsden Hall Academy

KS4, attainment, thresholds by pupil characteristics		5/5+ (1-9) with EM		5/5+ (2-9) with EM		5/5+ (3-9) with EM		5/5+ (4-9) with EM		5/5+ (5-9) with EM		Progress 5			
												Cohort	p5	Cohort	Total Attainment 5 Pts
All	13	2	15.4%	0	0.0%	0	0.0%	0	0.0%	0	0.0%	12	-2.45	13	4.92
Male	13	2	15.4%									12	-2.45	13	4.92
Female	0	0										0			
SENDK												0			
SENDE	13	2	15.4%									12	-2.45	13	4.92
KS2 Higher	1	1	100.0%									1	-3.82	1	16.00
KS2 Middle	7	1	14.3%									7	-2.57	7	6.21
KS2 Lower	4	0	0.0%									4	-1.90	4	1.13
No KS2	1	0												1	0.00
Pupil Premium	9	2	22.2%									9	-2.56	9	5.33
Non Pupil Premium	4	0										3	-2.12	4	4.00
First Language - Other	0	0										0			
First Language - English	13	2	15.4%									12	-2.45	13	4.92
Year 7 Start	7	1	14.3%									6	-1.97	7	5.36
Year 8 Start	2	0	0.0%									2	-2.55	2	4.25
Year 9 Start	2	0	0.0%									2	-3.13	2	1.00
Year 10 Autumn Start	2	1	50.0%									2	-3.11	2	8.00
Year 10 Spring Start	0	0										0			
Year 10 Summer Start	0	0										0			
Year 11 Autumn Start	0	0										0			
Year 11 Spring Start	0	0										0			

Year 11 (2018 V1)

PLT Ramsden Hall Academy

(1-9) Analysis by pupil characteristics		1/1+ (1-9)		2/2+ (1-9)		3/3+ (1-9)		4/4+ (1-9)		5/5+ (1-9)		Total Attainment 5 Pts
All	13	9	69.2%	6	46.2%	3	23.1%	3	23.1%	2	15.4%	4.92
Male	13	9	69.2%	6	46.2%	3	23.1%	3	23.1%	2	15.4%	4.92
Female	0	0										
SENDK												
SENDE	13	9	69.2%	6	46.2%	3	23.1%	3	23.1%	2	15.4%	4.92
KS2 Higher	1	1	100.0%	1	100.0%	1	100.0%	1	100.0%	1	100.0%	16.00
KS2 Middle	7	6	85.7%	4	57.1%	2	28.6%	2	28.6%	1	14.3%	6.21
KS2 Lower	4	2	50.0%	1	25.0%							1.13
No KS2	1	0										0.00
Pupil Premium	9	6	66.7%	4	44.4%	2	22.2%	2	22.2%	2	22.2%	5.33
Non Pupil Premium	4	6	75.0%	2	50.0%	1	25.0%	1	25.0%			4.00
First Language - Other	0	0										
First Language - English	13	9	69.2%	6	46.2%	3	23.1%	3	23.1%	2	15.4%	4.92
Year 7 Start	7	5	71.4%	4	57.1%	2	28.6%	2	28.6%	1	14.3%	5.36
Year 8 Start	2	2	100.0%	1	50.0%							4.25
Year 9 Start	2	1	50.0%									1.00
Year 10 Autumn Start	2	1	50.0%	1	50.0%	1	50.0%	1	50.0%	1	50.0%	8.00
Year 10 Spring Start	0	0										
Year 10 Summer Start	0	0										
Year 11 Autumn Start	0	0										
Year 11 Spring Start	0	0										

Year 11 (2018 V1)

PLT Ramsden Hall Academy

(2-9) Analysis by pupil characteristics		1/1+ (2-9)	2/2+ (2-9)	3/3+ (2-9)	4/4+ (2-9)	5/5+ (2-9)	Total Attainment 5 Pts
All	13	4 30.8%	3 23.1%	2 15.4%	1 7.7%	0 0.0%	4.92
Male	13	4 30.8%	3 23.1%	2 15.4%			4.92
Female	0	0					
SENDK							
SENDE	13	4 30.8%	3 23.1%	2 15.4%	1 7.7%		4.92
KS2 Higher	1	1 100.0%	1 100.0%	1 100.0%	1 100.0%		16.00
KS2 Middle	7	3 42.9%	2 28.6%	1 14.3%			6.21
KS2 Lower	4	0					1.13
No KS2	1	0					0.00
Pupil Premium	9	3 33.3%	2 22.2%	2 22.2%	1 11.1%		5.33
Non Pupil Premium	4	3 25.0%	1 25.0%				4.00
First Language - Other	0	0					
First Language - English	13	4 30.8%	3 23.1%	2 15.4%	1 7.7%		4.92
Year 7 Start	7	2 28.6%	2 28.6%	1 14.3%			5.36
Year 8 Start	2	1 50.0%					4.25
Year 9 Start	2	0					1.00
Year 10 Autumn Start	2	1 50.0%	1 50.0%	1 50.0%	1 50.0%		8.00
Year 10 Spring Start	0	0					
Year 10 Summer Start	0	0					
Year 11 Autumn Start	0	0					
Year 11 Spring Start	0	0					

Year 11 (2018 V1)

PLT Ramsden Hall Academy

(3-9) Analysis by pupil characteristics		1/1+ (3-9)	2/2+ (3-9)	3/3+ (3-9)	4/4+ (3-9)	5/5+ (3-9)	Total Attainment 5 Pts
All	13	3 23.1%	2 15.4%	1 7.7%	0 0.0%	0 0.0%	4.92
Male	13	3 23.1%	2 15.4%	1 7.7%			4.92
Female	0	0					
SENDK							
SENDE	13	3 23.1%	2 15.4%	1 7.7%			4.92
KS2 Higher	1	1 100.0%	1 100.0%				16.00
KS2 Middle	7	2 28.6%	1 14.3%	1 14.3%			6.21
KS2 Lower	4	0					1.13
No KS2	1	0					0.00
Pupil Premium	9	3 33.3%	2 22.2%	1 11.1%			5.33
Non Pupil Premium	4	0					4.00
First Language - Other	0	0					
First Language - English	13	3 23.1%	2 15.4%	1 7.7%			4.92
Year 7 Start	7	1 14.3%	1 14.3%	1 14.3%			5.36
Year 8 Start	2	1 50.0%					4.25
Year 9 Start	2	0					1.00
Year 10 Autumn Start	2	1 50.0%	1 50.0%				8.00
Year 10 Spring Start	0	0					
Year 10 Summer Start	0	0					
Year 11 Autumn Start	0	0					
Year 11 Spring Start	0	0					

Year 11 (2018 V1)

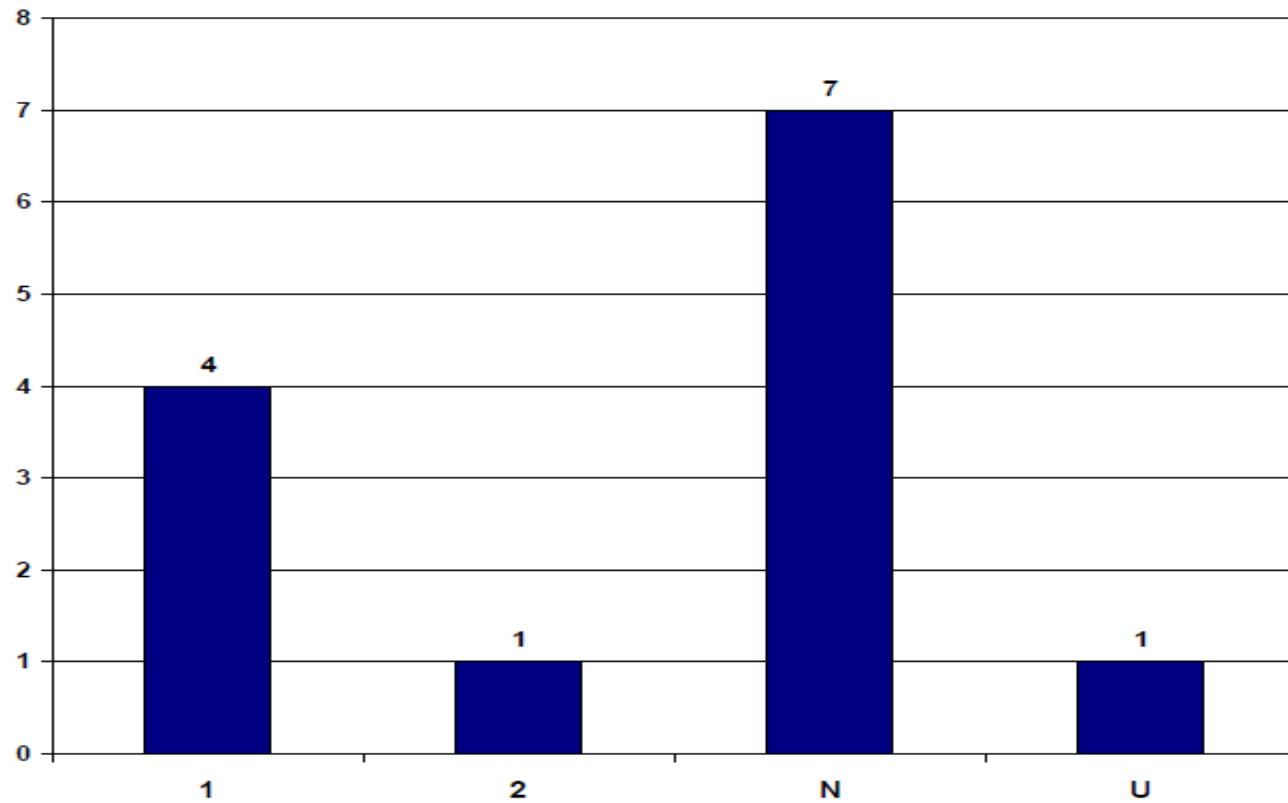
GCSE English Language



English Language

Entries: 13

APS	9-5	9-4	9-1	9	8	7	6	5	4	3	2	1	U/N/X
0.5	0.0%	0.0%	38.5%	0.0%	0.0%	0.0%	0.0%	0.0%	0.0%	0.0%	7.7%	30.8%	61.5%
				0	0	0	0	0	0	0	1	4	8



Year 11 (2018 V1)

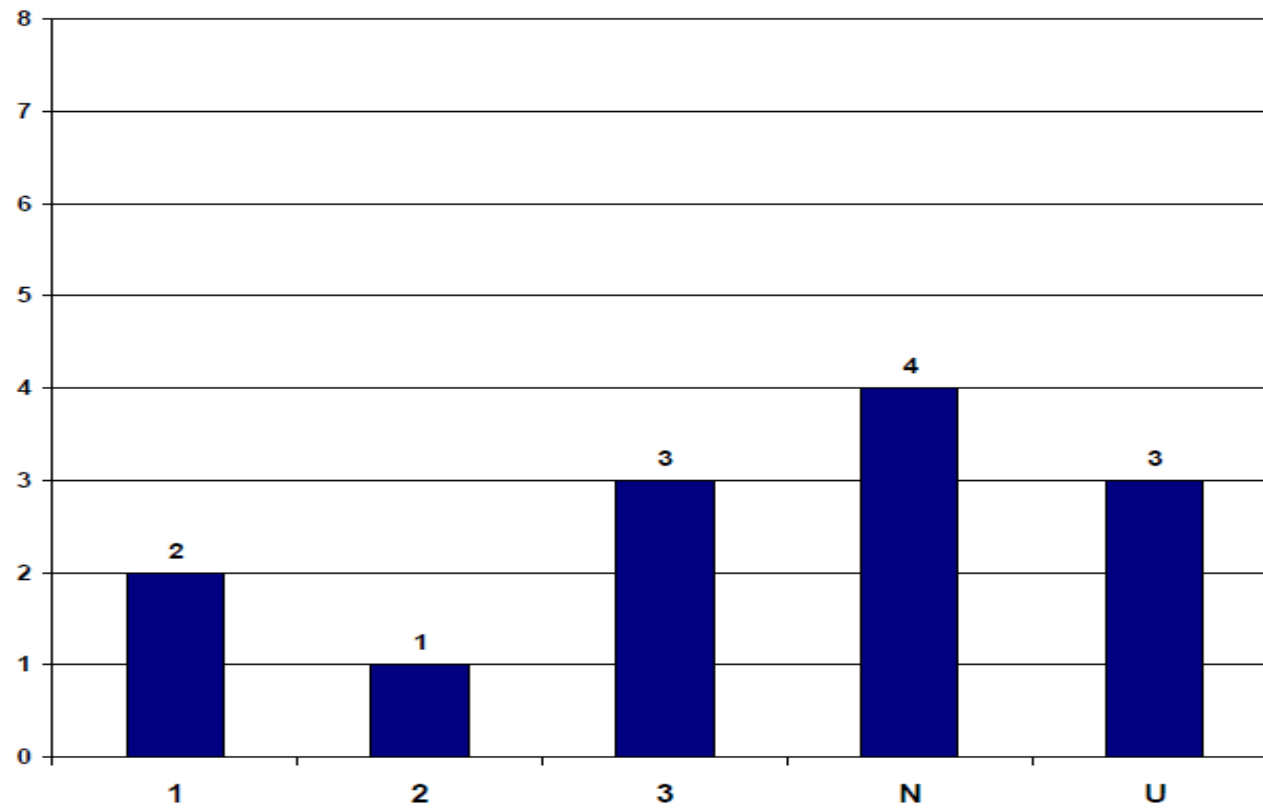
GCSE Mathematics

Parallel Learning Trust

Mathematics

Entries: 13

APS	9-5	9-4	9-1	9	8	7	6	5	4	3	2	1	U/N/X
1.0	0.0%	0.0%	46.2%	0.0%	0.0%	0.0%	0.0%	0.0%	0.0%	23.1%	7.7%	15.4%	53.8%
				0	0	0	0	0	0	3	1	2	7



Year 11 (2018 V1)

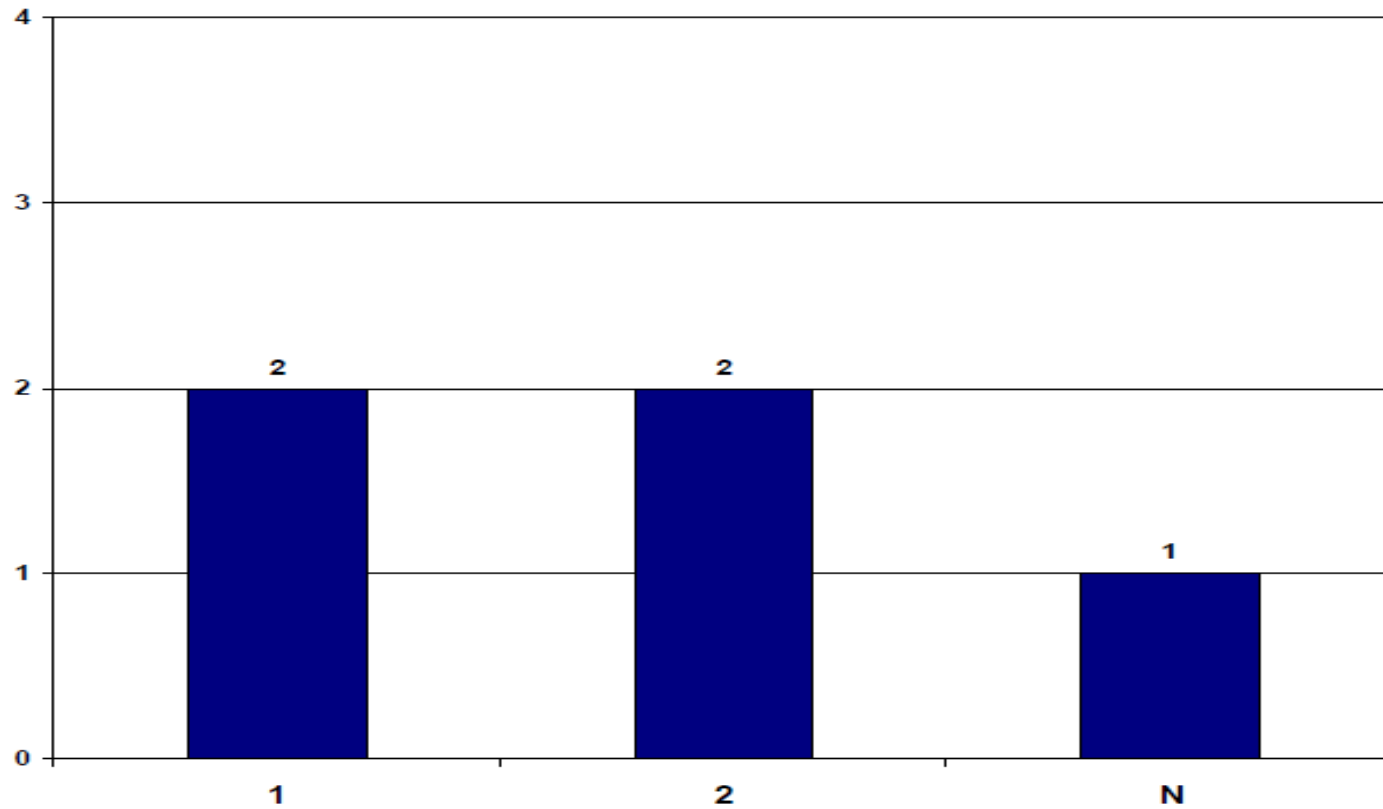
PE (IGCSE)

Parallel Learning Trust

PE (IGCSE)

Entries: 5

APS	9-5	9-4	9-1	9	8	7	6	5	4	3	2	1	N/X
1.2	0.0%	0.0%	80.0%	0.0%	0.0%	0.0%	0.0%	0.0%	0.0%	0.0%	40.0%	40.0%	20.0%
				0	0	0	0	0	0	0	2	2	1



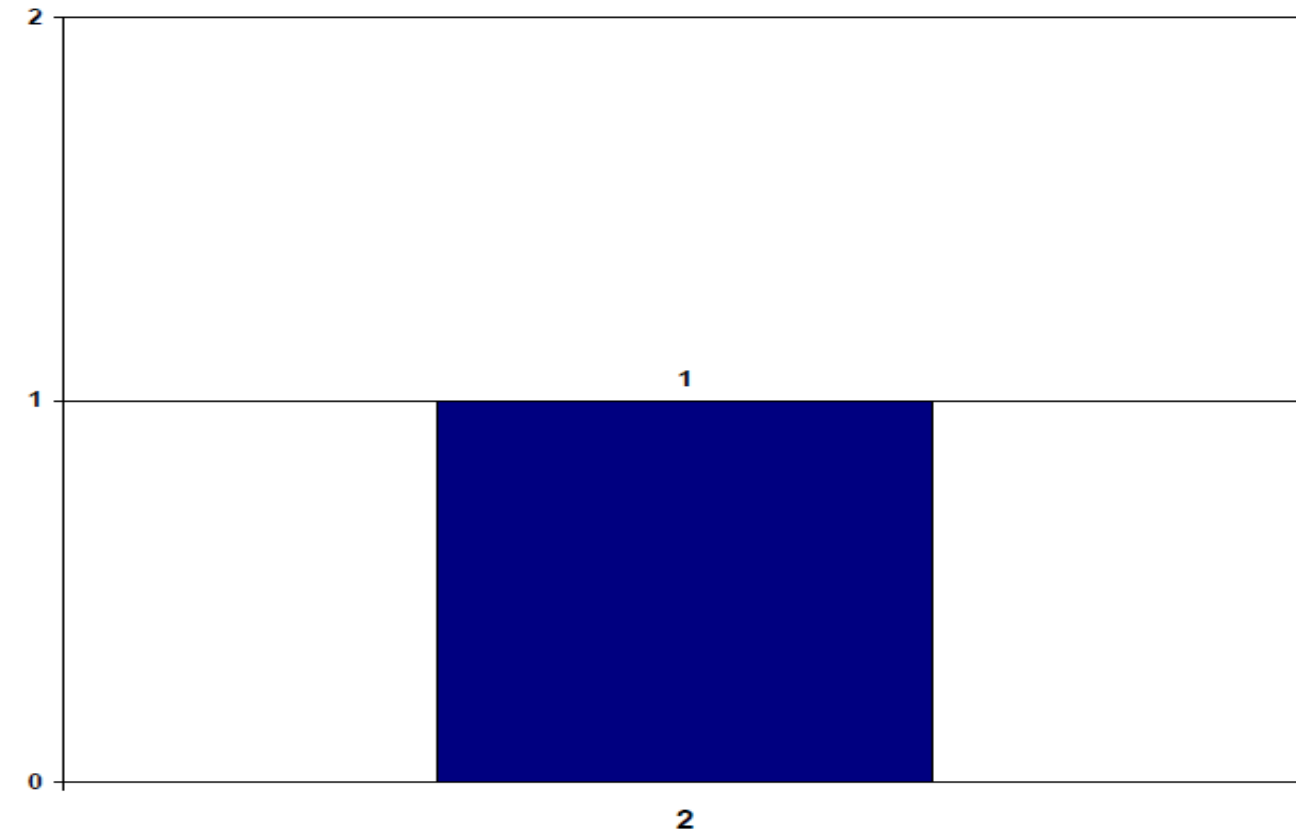
DT

Parallel Learning Trust

DT

Entries: 1

APS	9-5	9-4	9-1	9	8	7	6	5	4	3	2	1	N/X
2.0	0.0%	0.0%	100.0%	0.0%	0.0%	0.0%	0.0%	0.0%	0.0%	0.0%	100.0%	0.0%	0.0%
				0	0	0	0	0	0	0	1	0	0



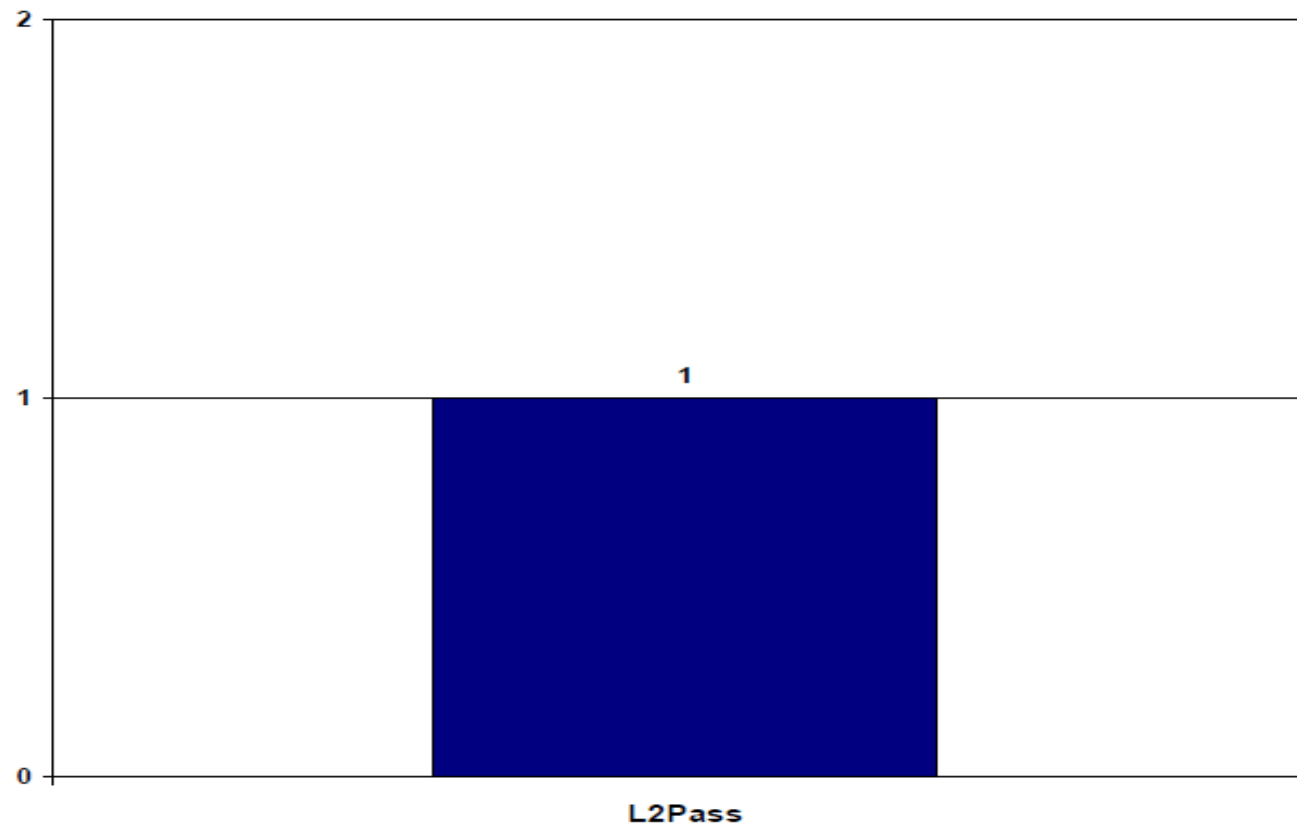
BTEC Sport

Parallel
Learning
Trust

BTEC Sport

Entries: 1

L2Pass	L1Pass	EL3	EL2	EL1
100.0%	0.0%	0.0%	0.0%	0.0%
1	0	0	0	0



Year 11 (2018 V1)

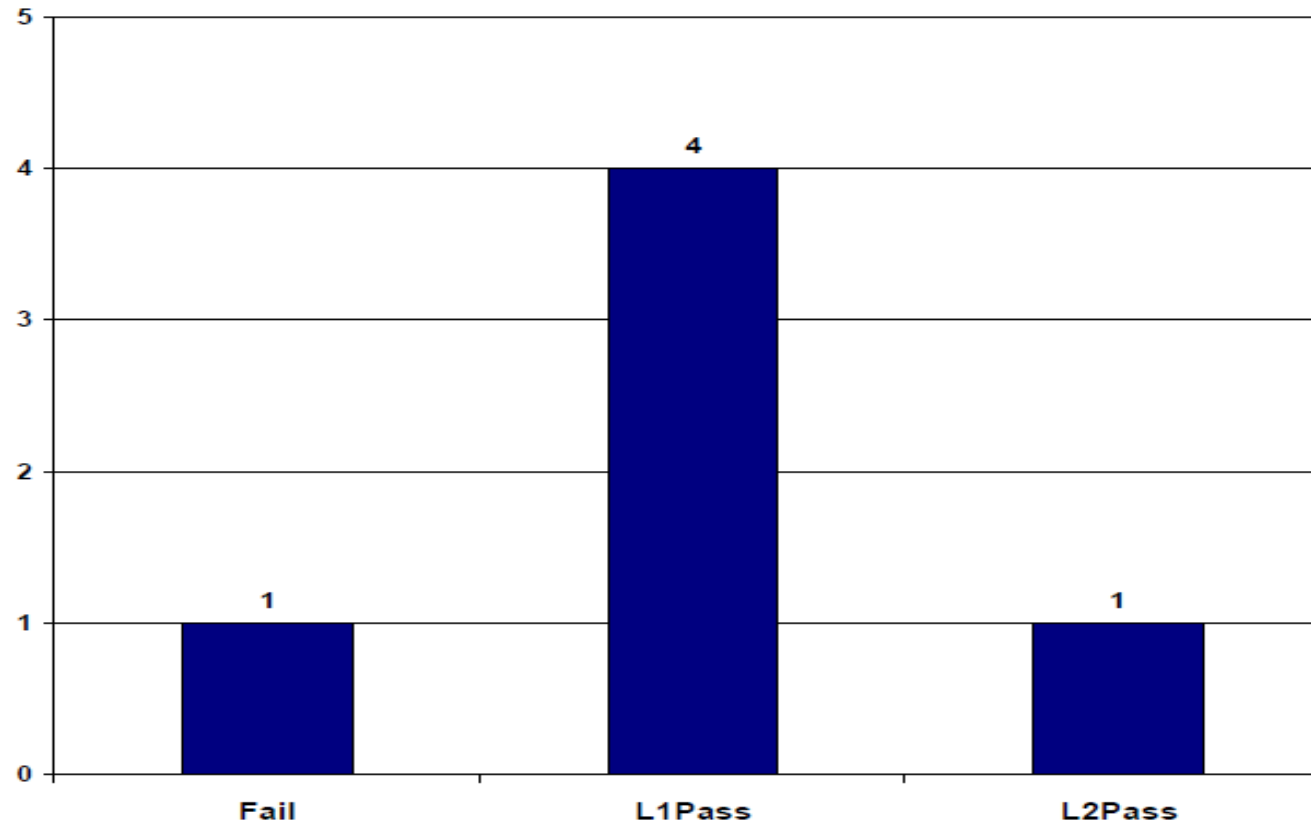
Prep for Work

(All)

Prep for Work

Entries: 6

L2Pass	L1Pass	EL3	EL2	EL1
16.7%	66.7%	0.0%	0.0%	0.0%
1	4	0	0	0



Year 11 (2018 V1)

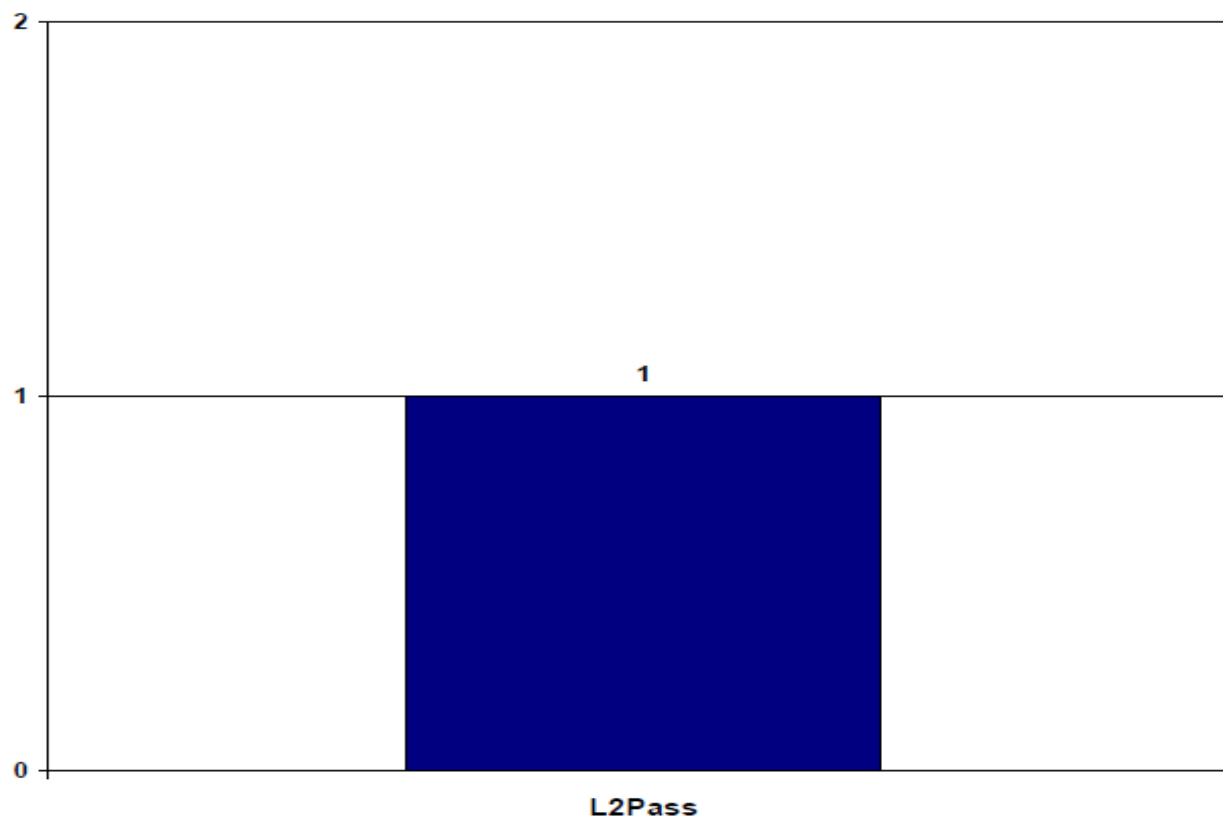
Home Cooking

Parallel Learning Trust

Home Cooking

Entries: 1

L2Pass	L1Pass	EL3	EL2	EL1
100.0%	0.0%	0.0%	0.0%	0.0%
1	0	0	0	0



Year 11 (2018 V1)

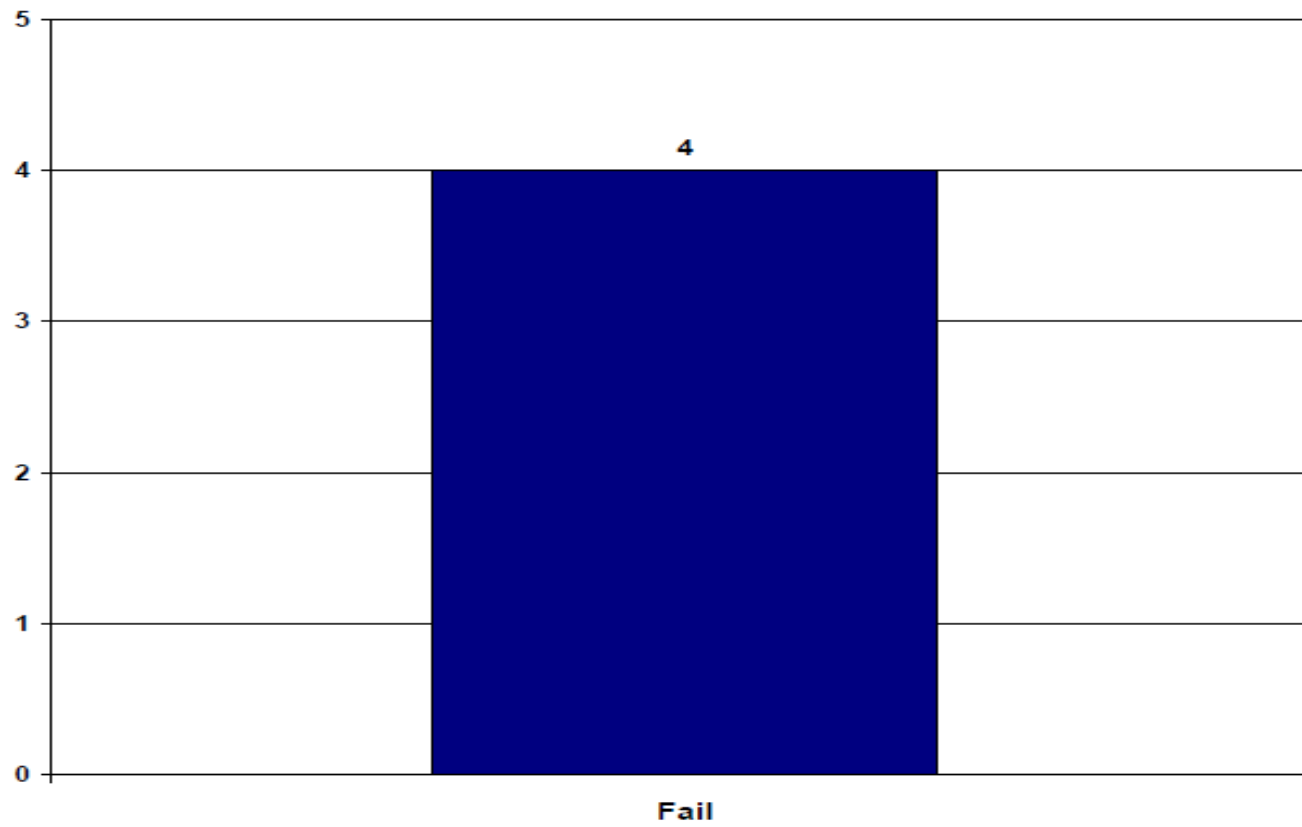
F/S Mathematics

Parallel Learning Trust

F/S Mathematics

Entries: 4

L2Pass	L1Pass	EL3	EL2	EL1
0.0%	0.0%	0.0%	0.0%	0.0%
0	0	0	0	0



Year 11 (2018 V1)

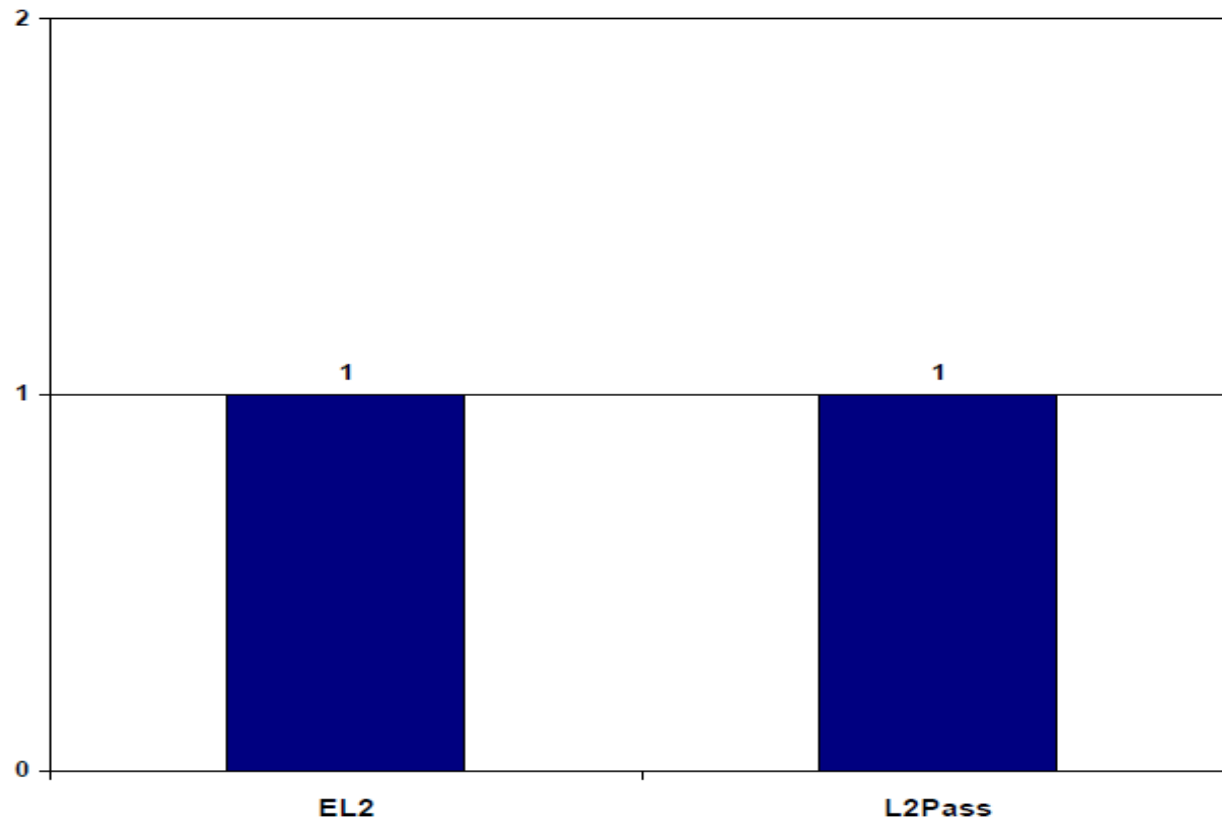
F/S English

Parallel Learning Trust

F/S English

Entries: 2

L2Pass	L1Pass	EL3	EL2	EL1
50.0%	0.0%	0.0%	50.0%	0.0%
1	0	0	1	0



Year 11 (2018 V1)

PLT Ramsden Hall Academy

BTEC/Vocational attainment analysis

F/S Mathematics

Entries: 4

L2Pass	L1Pass	EL3	EL2	EL1
0.0%	0.0%	0.0%	0.0%	0.0%
0	0	0	0	0

F/S English

Entries: 2

L2Pass	L1Pass	EL3	EL2	EL1
50.0%	0.0%	0.0%	50.0%	0.0%
1	0	0	1	0

BTEC Sport

Entries: 1

L2Pass	L1Pass	EL3	EL2	EL1
100.0%	0.0%	0.0%	0.0%	0.0%
1	0	0	0	0

Prep for Work

Entries: 6

L2Pass	L1Pass	EL3	EL2	EL1
16.7%	66.7%	0.0%	0.0%	0.0%
1	4	0	0	0

Home Cooking

Entries: 1

L2Pass	L1Pass	EL3	EL2	EL1
100.0%	0.0%	0.0%	0.0%	0.0%
1	0	0	0	0