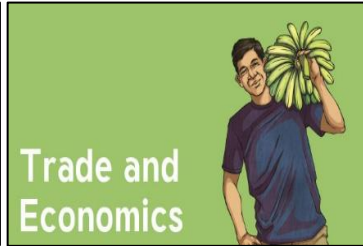
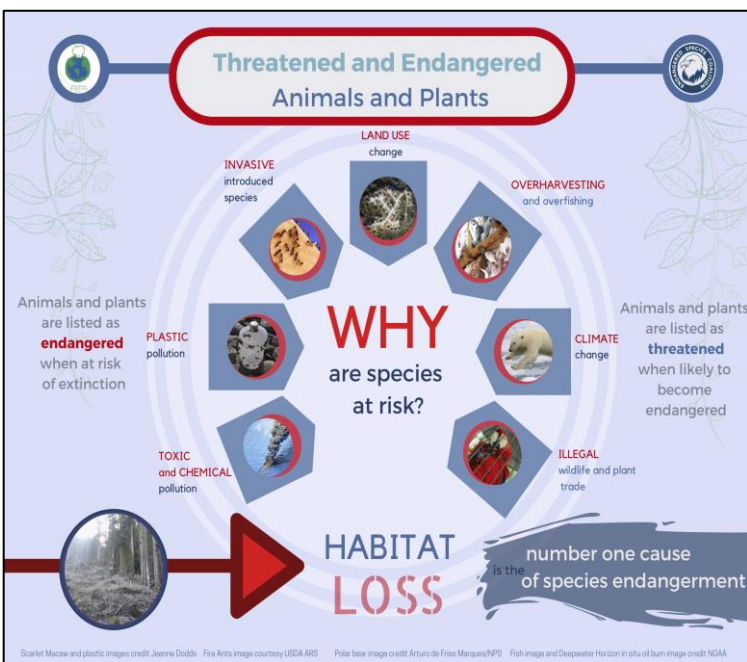


## Year 6 Knowledge Organiser



### What is trade and why is it important?

**Trade** is an important way to make sure that natural resources are shared around the world.

Countries can **export** goods to another country to generate money and they can also **import** goods that may not be available in their own country.

**Trade** has been happening around the world for hundreds of years and **goods** are carried around the world by container ships and planes.

There are many things that we enjoy as a result of **trade links** with other parts of the world.

**Chocolate** comes from the cocoa plant which grows in tropical climates. That means that for us to enjoy chocolate in England we must **import** it into the country.

**Bananas** need lots of sun to grow which means that they cannot grow in England. The United Kingdom imports around 1.15 million tonnes of bananas every year.

**Coffee** comes from a plant which grows between the Tropics of Cancer and Capricorn. The UK drinks an average of 70 million cups of coffee a day. This means there is a high demand for it to be **imported**.

### Vocabulary Dozen

<b>trade</b>	The buying, selling or exchanging of goods between people, companies or countries.
<b>profit</b>	The amount of money you gain when you are paid more for something that it cost you to make or provide that service.
<b>import</b>	To buy products or raw materials from another country.
<b>export</b>	To sell products or raw materials to another country.
<b>industry</b>	Consists of people or companies who make products or provide a service.
<b>consume</b>	To be used by a person or country.
<b>product</b>	Something produced and sold in large quantities (often made in a factory).
<b>sustainability</b>	The ability to maintain supply with exhausting the supplies available.
<b>fair trade</b>	The practice of buying goods directly from producers in developing countries at a fair price.
<b>global</b>	Happens in all parts of the world.
<b>supply</b>	Is the amount of something which someone has or which is available to use.
<b>globalisation</b>	The process by which a company tries to expand to operate across the world.



Inspirational Figures	Role
Alexander the Great	Discovered bananas in 327 BC and introduced them to the Western world.
Greta Thunberg	An environmental activist who is raising awareness for climate change.
Laura Bingham	Travelled across South America, West Coast to East Coast, by bike.
Oxfam	Created the first Fairtrade Organisation in 1964.

