

Dear Families,

I hope that you are all keeping well. We have had a good January here at Rushey Green. This month we have been focusing on our school learning value of **Perseverance**

*'sometimes learning can be hard but we try and try to do our best'*

In February we will have a focus on **Collaboration**:

I am pleased to welcome our new SENCO Ms Thomas who will join us on Monday. I am sure Ms Thomas will look forward to meeting you and will be available for a meet and greet each morning on the Penerley Road entrance.

## PARKING

Please can I encourage cars to park respectfully around the school. It is sad to hear neighbours complaining of cars blocking their drive and parking on private property.

## COVID update

This week we have been monitoring cases across school, whilst we have relatively few numbers we are still taking caution to keep the virus from spreading. Please do not send children to school with symptoms, take pre caution and get a test. Thank you.

## The School day

School starts at 9am and ends at 3.15pm During COVID restrictions **Reception and Nursery ended at 3pm they will no return back to the normal time of 3.10pm**

The Culverley road gate will open at 8.40am and classroom doors to open at 8.45am.

Front office will be open from 8.45-9.15am in the morning and 3.15pm-3.45pm at the end of the day.

As we approach February we will support the Lewisham Council celebration of the LGBTQ+ community. We will promote our ethos of 'we are all welcome here' - inclusion is the strength of our school. If any member of the LGBTQ+ community would like to share an event or would like to discuss how we as a school can further engage with the community please do come and see a member of the senior leadership team, we would love to hear from you.



**#LewishamIsProud**

# Here are some examples of what we have been learning.

## 4S Positive Attitude

DURING PSHE, 4S HAVE BEEN DISCUSSING REASONS WHY HAVING A POSITIVE ATTITUDE CONTRIBUTES TO OUR HAPPINESS



Could you be entitled to free school meals? Check here: <https://pps.lgfl.org.uk/> In addition the school could receive additional funding to help your children in school.

You could also be sent £15 per week per child to help with food during school closures.



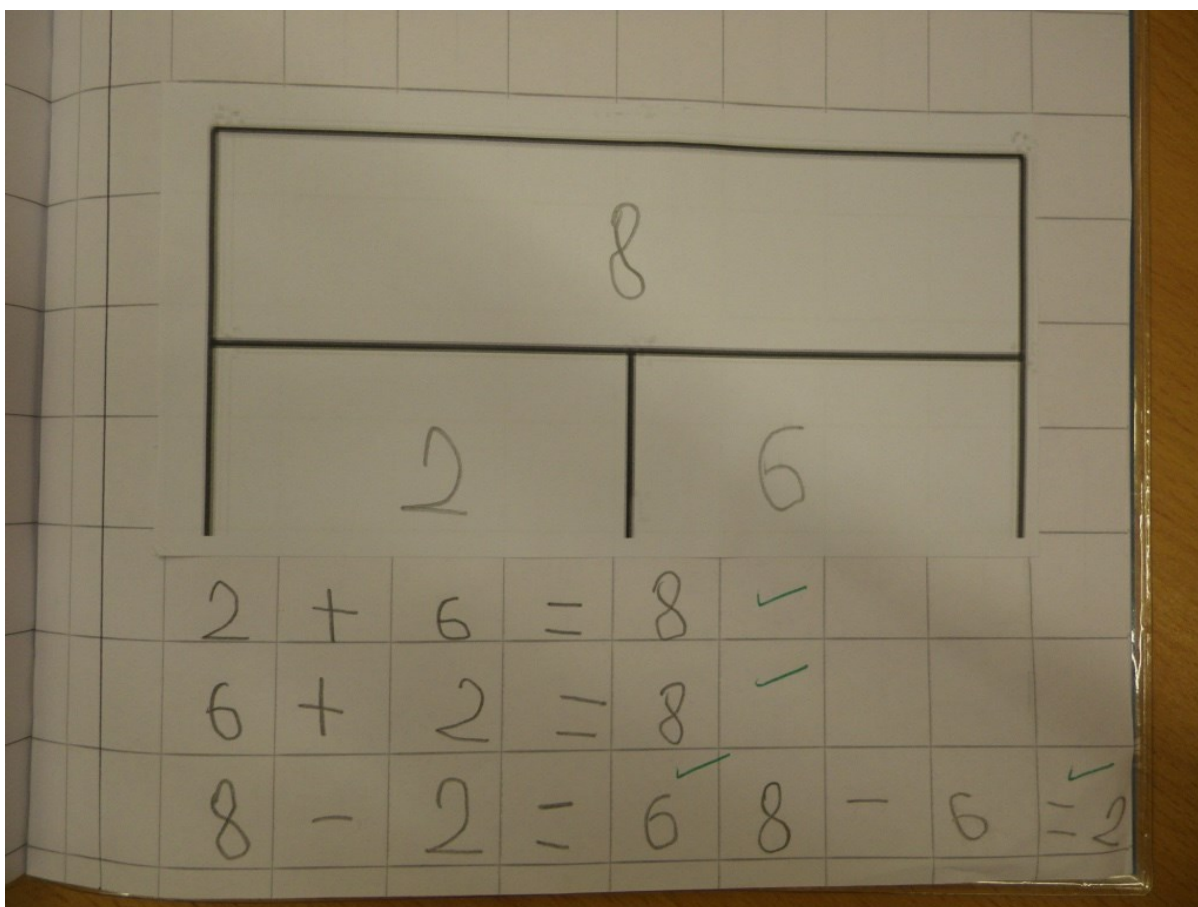
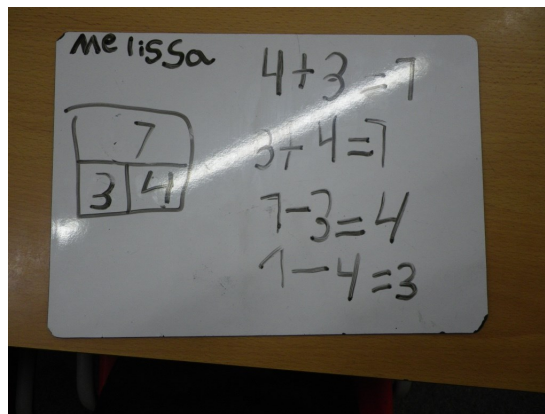
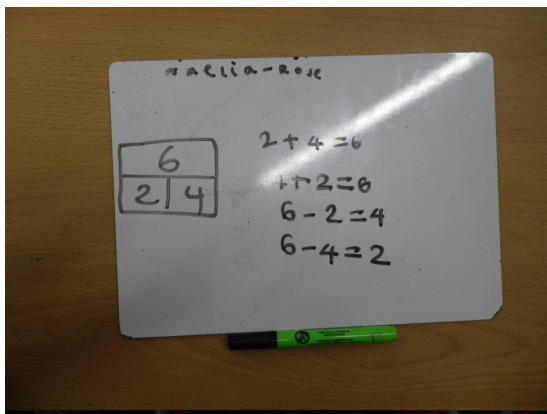
## PHOTO DAY

We are having a photo day on Tuesday  
1st February 2022

We are updating the school website  
and displays in school.

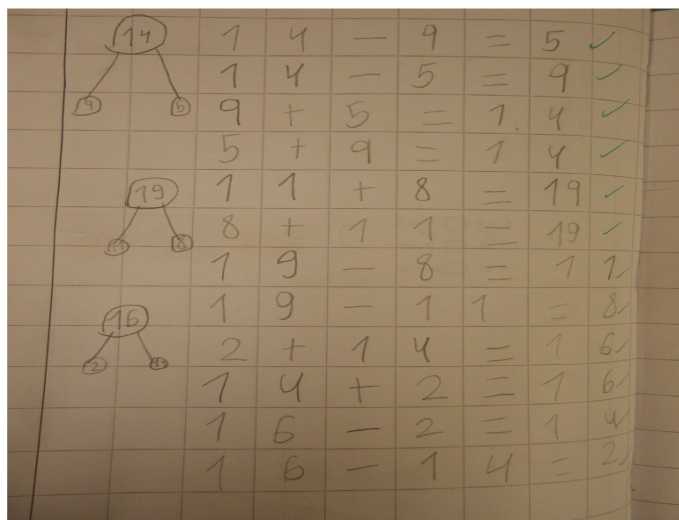
Best dressed and best smiles on this  
day please!





This week in 1R we have been learning about fact families in maths. We have used the bar model to help us write number sentences using the three numbers; we did two addition sentences and two subtraction sentences.

Some of us used the part part whole model:

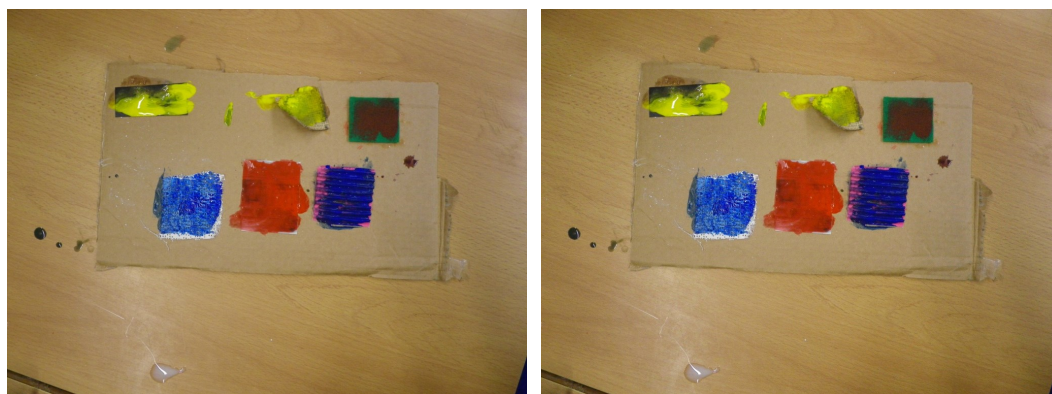


In English we have been learning about fiction and nonfiction books.

Can you tell which book is fiction and which one is nonfiction?



In art we have used primary colours and the dip dip dab method to paint on various materials/textures.

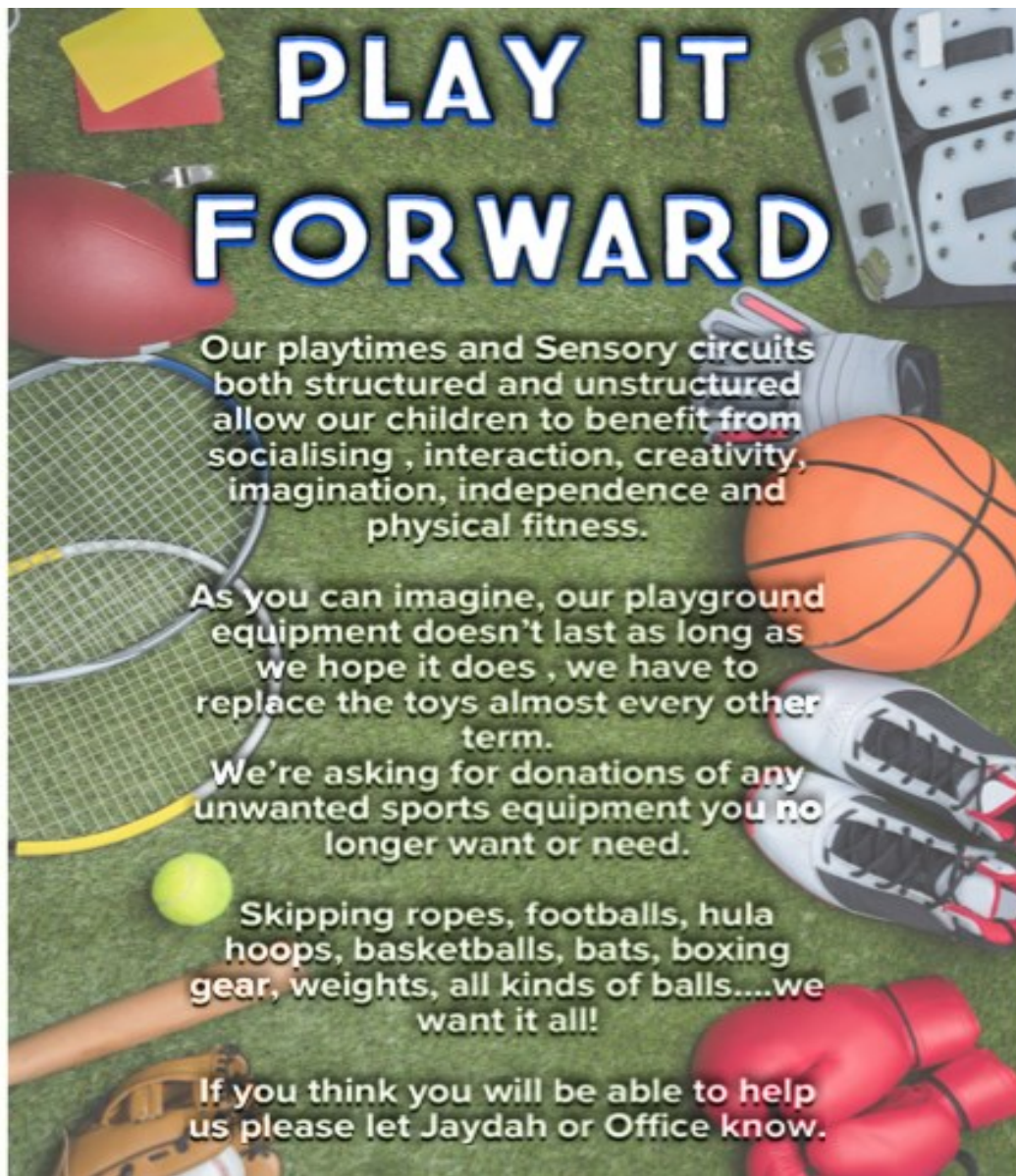






We have also learnt the features of a paint brush, there is a handle, bristles and a ferrule. We've practised making thin and thick brush strokes in the shape of a C, some small and some quite big. We really had to concentrate and listen to the instructions. Here are some of our fantastic art pieces!





**No more party bags—why not donate a bat and ball? A skipping rope? Cricket set? Hoola Hoop?**

**Dedicated a gift to your child's class or the rest of the school. We welcome donations if you can help please ask for at Reception for Jaydah RGSA.**

**Keeping  
children safe  
is everyone's  
responsibility**



## ONLINE SAFETY

This February children re visit learning on how to keep safe online. We encourage all our children to know the signs of safety and tell an adult if they see something inappropriate.



Please check your child does not share details of themselves online. Keep Webcams off! NOTE social media, chat groups can often be playground for bullying. We do not tolerate any form of bullying at Rushey Green, cyber bullying is an offense and could lead to serious consequences by the police.

## RACE EQUALITY

We have been working together to review our curriculum content , this is our commitment to developing an anti racist curriculum. If would like to become part of the Race equality steering group. Please come and speak to Mrs Williams

We would welcome your input.

If you are concerned about a child or need help in any way please let us know. We are here.....

Contact: Designated safeguarding lead

**Miss Stacey McIntosh**

**[s.mcintosh@rusheygreen.lewisham.sch.uk](mailto:s.mcintosh@rusheygreen.lewisham.sch.uk)**







During the month of January, the children have been learning about **Article 29 - Goals of education.**

Education must develop every child's personality, talents and abilities to the fullest. It must encourage the child's respect for human rights, as well as respect for their parents, their own and other cultures, and the environment. The start of a new year is often a time for looking at our lives and making promises to ourselves.

The UN Convention on the Rights of the Child is a list of promises from world leaders to all the children and young people of the world.

The children have been thinking about what they would like to achieve this year and how their education could help them to achieve their goal.

Some activities to do at home:



Article 29 says that education should develop your **personality**, **abilities** and **talents**. Look up these words and discuss their meaning. Create a drawing or write a poem or story to show some of your abilities and talents or an aspect of your personality.



Draw a picture of your school showing two of the **things you most like doing**.

Article 29 talks about developing talents, but **what is talent? What is your talent?** Decide on your top tips for how to develop your talent.



If your child has completed any of the tasks, please bring them to Miss Fisher.