



RUSHEY GREEN PRIMARY SCHOOL NEWSLETTER



Gentle reminders...

Thursday 5th May: R2 class assembly (9—9.30am)

Friday 6th May: 3A class assembly (9—9.30am)

Week beginning 9th May: Year 6 SATS week

Monday 9th May and Tuesday 10th May: 5TTG Parents' Evening (3.30—6pm)

Monday 9th May and Tuesday 10th May: 2China Parents' Evening (3.30—6pm)

Friday 13th May: 4I class assembly (9—9.30am)

CHEFFING...



Year 5 children this week have been the first in the school to enter the school kitchen to work with Chef Luke and Miss Lena to deliver some practical and class based learning for Food Technology.



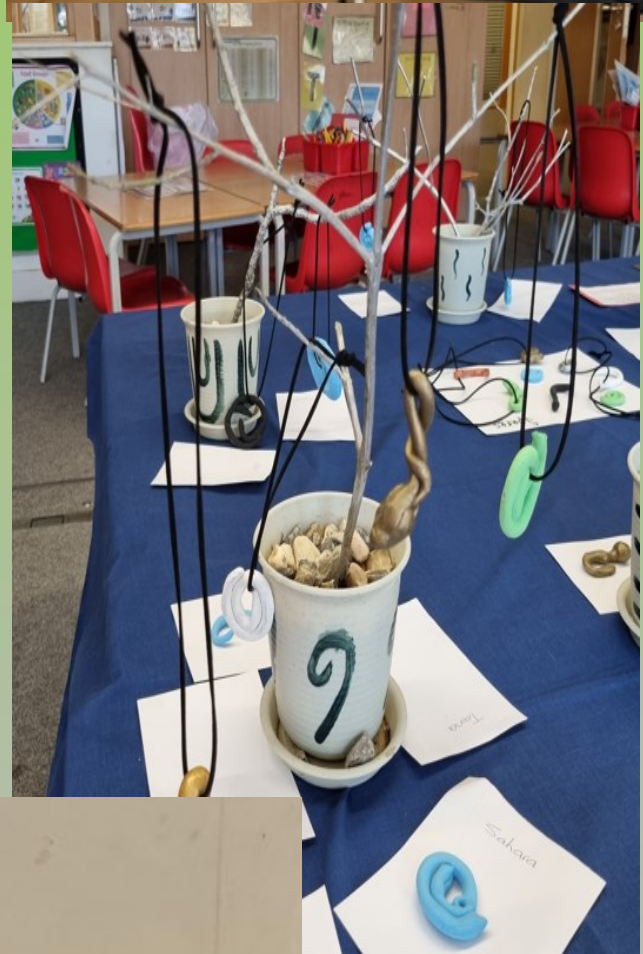
Over the next 6 weeks the children will work in groups to look at where our food comes from, how we can be sustainable and seasonal when we shop and how we can make healthier choices. They will also learn practical knife skills, how to use equipment and be safe in a kitchen as well as listening and team work. ***This week the children made pasta from homemade dough, beef meatballs, veggie tomato sauce and salad.***

A huge thank you...



Such an amazing evening yesterday! Thank you to everyone who attended, donated and volunteered to such a worthy cause. Thank you to the children for all their hard work...the art work was fabulous! Thank you to all the artists who donated pieces to auction at the fundraiser. We are extremely proud of our school and the community that we are part of.







Rushey Green Primary
School
Art Auction
in aid of a memorial garden
for
Sabina Nessa

Here is the link to the auction: [https://linktr.ee/
sabinasgarden](https://linktr.ee/sabinasgarden)

Artist: Luke Agbaimoni

Title: Paddington Station

Medium: Photograph (unframed)

Dimensions: 29.7 x 42 cm

Luke is an author, photographer and designer based in London England. He has an arts background with a degree in graphic design. His photography however was self-taught after he had graduated. He has a special love for dusk and night photography, enjoying the technical challenge of capturing low light images.

Tube Mapper is a photography project by Luke Agbaimoni... The Underground is the backbone of the city of London, a part of our identity. It's a network of shared experiences and visual memories. The tube mapper project captures moments of subconscious recognition and overlooked interests, showcasing images that can be seen near or at every London tube station.



<https://linktr.ee/sabinasgarden>

Artist: Tracy Allen

Title: HOG7950505

Medium: Screenprint (unframed)

Dimensions: 84.1 x 118.8 cm

Originally from Canada, Tracy Allen moved to London in 1998. She has a BA in Metalwork and Silversmithing (Camberwell College of Arts / L'Haute Ecole d'Arts Appliqués, Geneva, Switzerland, 2006) and an MA in Printmaking (Camberwell College of Arts, 2008). She currently lives and works in London.

Tracy is an artist and a maker – anything from jewellery, textiles, book making, printmaking, sewing, a bit of film to public art projects and collaborative works. Most of her work incorporates both local and universal subject matter with a social value and that are culturally recognized. She then reworks them to produce new aesthetic forms with an element of humour incorporated.

<https://linktr.ee/sabinasgarden>



Name: Billy Black

Title: Bamboo Baby Blanket (hypoallergenic)

Medium: Crochet Bamboo

Instagram: @billyblacklondon

Artist in yarn; garments, sculpture, rugs and blankets. Happy camper and wanderer. I knit and crochet....sweaters, rugs, decorations, scarves, shawls and more. I'm fascinated by colour and geometry. I take commissions for new creations and also repairs of your well-loved knitwear.



<https://linktr.ee/sabinasgarden>

Artist: Adam Hogarth

Title: Dobutsu 2

Medium: Screenprint (unframed)

Dimensions: 30 x 30cm

Adam has a BA Hons Fine Art from Northumbria University and a MFA from The Royal College of Art in Fine Art Print. He was a fellow at the Royal Academy of Arts from 2016 to 2020. He currently lives in Catford and works at Thames Side Print Studio and teaches at Citylit and Camden Working Men's College.



<https://linktr.ee/sabinasgarden>

Artist: Amanda Horwood

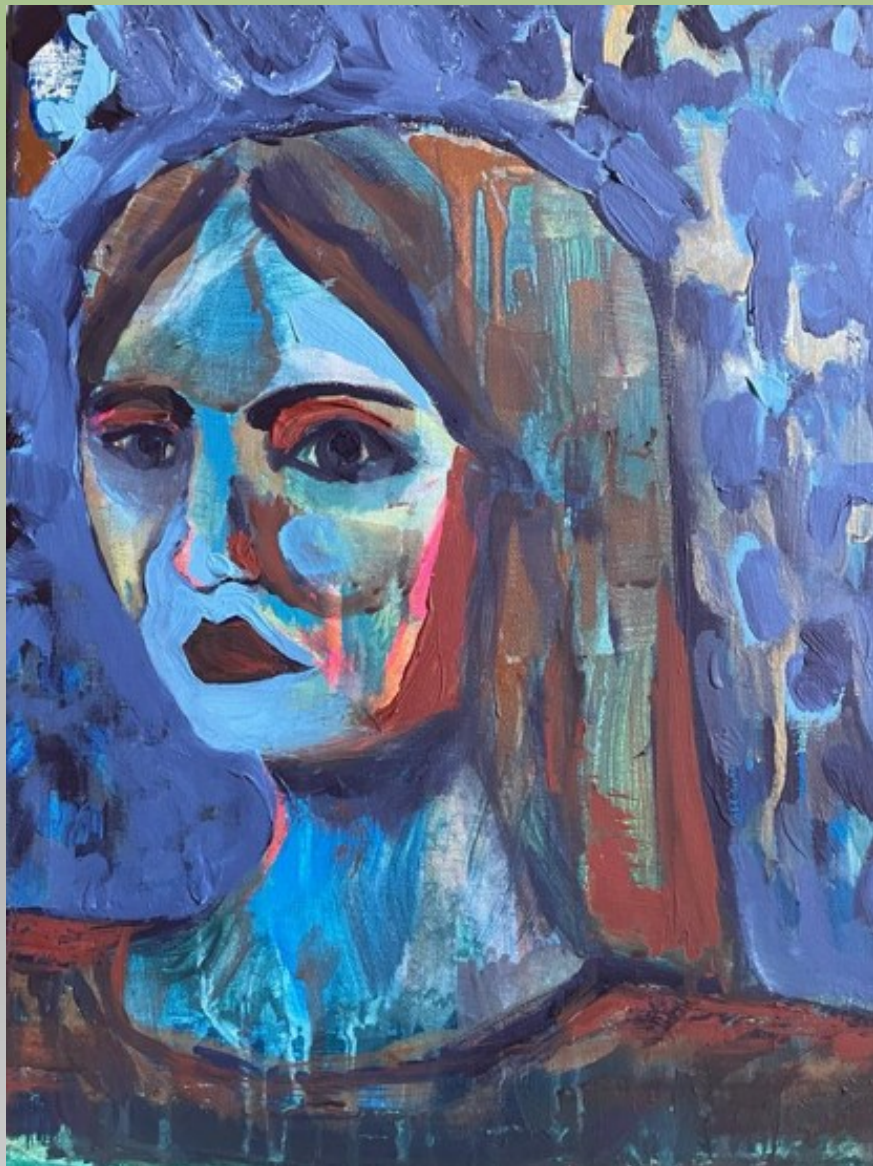
Title: Blue and Bronze Woman

Medium: Gouache, Acrylic and Ink on Canvas

Dimensions 12 x 16 inches

Website: <https://amandahorwood.com/>

Although my work is figurative I use a process that is similar to abstract painting. I layer and remove paint. I experiment and take risks. I work fast then take a step back and reflect. This starts and stops over and over again. The direction of the painting is led by the process and it takes on a life of its own. But I am there with it and sometimes I have to take control and be ruthless, making aesthetic decisions which may mean some characters may not survive or areas of the painting which have some nice qualities but do not benefit the painting as a whole are sacrificed. Under the final image there are other paintings that had to exist for the final version to be reached. They've contributed to the final version and you can get a sense hints of the past within the present. The painting has its own history like the characters within it.



<https://linktr.ee/sabinasgarden>



EXTRA BANK **HOLIDAY**

The Queen is celebrating her Platinum Jubilee for 70 years of service. This year an extra Bank Holiday will be awarded on Friday 3rd June. As this falls within the school holiday.

Teachers are able to add an additional day's holiday to the school calendar.

This will be taken on Friday 22nd July 2022. The date was originally planned as a training day, the day has now been moved to Friday 10th June 2022. Children will not be required to attend school on this day.

Stop! Read!



What Parents & Carers Need to Know about FACEBOOK MESSENGER

Facebook Messenger is a communication app through which users can exchange messages and send photos, stickers, and video and audio files. Messenger allows both one-to-one and group chats, has a stories feature and – via its latest addition, Rooms – can host a video call with up to 50 people. As of 2021, the app had 35 million users in the UK alone (more than half the population!) among its 1.3 billion users worldwide. Whereas Messenger is integrated into Facebook on desktops and laptops, it has existed as a standalone app for mobile devices since 2011.

AGE RATING
13+

WHAT ARE THE RISKS?

ADDICTIVE NATURE

Messenger's numerous features can encourage children to spend more time on the app – and therefore on their phone, increasing their levels of screen time. It also invokes FOMO (the fear of Missing out), especially among older children, who will almost certainly have a high proportion of their friends communicating via the app.

LIVE STREAMING

The new Rooms feature lets Messenger users hold video calls with up to 50 people. A young person can join any room they see, but the other people in these rooms don't even necessarily need to be Facebook account holders. This live streaming development heightens risk factors around privacy, security and the possibility of exposure to inappropriate content.

REQUESTS FROM STRANGERS

If the Facebook profile which accompanies their Messenger app is set to public, there's a possibility that young people will receive message requests from individuals they don't know. There have previously been reports of grooming attempts on Facebook, with predators using fake profiles to engage children in conversation.

OVERSHARING PERSONAL INFO

If the app is given access to their device's photo library or location services, young people can unintentionally share sensitive information (private photos, videos, their number or current whereabouts) with people on Messenger who they don't know. Even among friends, shared photos or videos don't always stay private: the recipient(s) could save and re-share them with others.

CYBERBULLYING

Like many communication apps, Messenger can be an avenue for cyberbullies or trolls to target children. This might take the form of harassment, abusive messages or being purposely excluded from (or targeted in) group chats. A 2021 Ofcom report revealed that more than half (58%) of 12-15-year-olds had suffered such negative experiences online in the preceding year.

SECRET CONVERSATIONS

The Secret Conversations function lets Messenger users have encrypted exchanges that no-one else can read. Unlike regular chats on the app, these can only be viewed on the device being used at the time. Messages can also be set to delete once read (although screenshots can be taken), so a child could chat privately with someone without any record of that conversation having taken place.

Advice for Parents & Carers

USE ADDITIONAL SECURITY

Messenger's App Lock feature uses your child's fingerprint or face ID to ensure that nobody else can access their messages without permission. Messenger has also added a variety of optional tools to increase young people's safety on the app, including two-factor authentication, login alerts and filtered message requests.

REPORT INAPPROPRIATE BEHAVIOUR

If your child experiences anything negative on Messenger, you can help them report it. Facebook can then take action such as disabling the offender's account, limiting their ability to send messages or blocking them from contacting your child again. If your child doesn't want to display to others that they're online, they can switch off Active Status in the app's settings.

ADJUST PRIVACY SETTINGS

Make your child's Messenger stories visible only to their friends. Avoid adding your child's phone number (so they can't be found by someone using their number to search for them), and not syncing contacts lets your child choose who to add (or not) individually. Via Settings, you can control who appears in your child's chat list, who goes into the message request folder and who can't contact your child at all.

REVIEW THE CHAT LIST

Some parents regularly check their children's Messenger conversations (to see who they're talking to, rather than what they're talking about). While this is certainly safe, it can seem intrusive. If approached in a sensible, collaborative way, however, it can help parents and carers to keep an eye on exactly who their child is communicating with.

DISCUSS LIVE STREAMING

Talk with your child about safe and secure video calling. When setting up calls on Messenger Rooms, only invite people who your child knows and trusts. Show them how to lock a room if they don't want other people joining – and how to remove anyone they don't want on the call. Remind them about behaving responsibly during a live stream, even if it's with people they know.

ENCOURAGE SAFE SHARING

Ensure your child knows to send pictures and videos only to family and trusted friends, and not to publicly share images which compromise their location (showing a landmark near home or clothing with identifiable logos, like a school or local club crest). Encourage them to pause before sharing anything – if there's a chance it could harm their reputation (or someone else's), don't send it.

Meet Our Expert

Alex Wright is a former Facebook employee and social media expert with more than 15 years' experience in digital media. He has worked with some of the biggest organisations on the planet and has a vast understanding of how social media platforms work and how they engage their audience.

National Online Safety
#WakeUpWednesday

www.nationalonlinesafety.com @natonlinesafety /NationalOnlineSafety @nationalonlinesafety

Users of this guide do so at their own discretion. No liability is entered into. Current as of the date of release: 13.04.2022

Support for dads



An 8-week online group by dads for dads



Tuesday 3rd May - 5th July



Use QR code or link to register or
email EPECProject@slam.nhs.uk

Tuesday evenings
7-8.30pm on Zoom

What other dads said...

"When I signed up I expected a tonne of advice and strategies. What I didn't expect was the sense of community I got from a bunch of dads who genuinely seem to understand."

S, dad of two, Lewisham

"I'm amazed with the honesty and openness from the group. Great sessions, useful tips and practical advice to help manage my two young boys. It's a regular feature of my week that I look forward to."

N, dad of two, Lambeth

Good
parenting
ideas based
on science,
research &
experience



SAFEGUARDING

Miss Stacey McIntosh



**Pastoral Manager &
Designated Safeguarding Lead**

If you are concerned about the safety of a child at Rushey Green Primary School, please contact our Designated Safeguarding Lead Miss Stacey or the Designated Safeguarding Governor via the School Office.

If your concern is urgent and out of school hours, please contact:

MASH: 0208 314 6660

KING'S
College
LONDON



EMPOWERING
PARENTS
EMPOWERING
COMMUNITIES

NHS

South London
and Maudsley
NHS Foundation Trust



Scan
me

Good
parenting
ideas based
on science,
research &
experience



VL 13/07/21

Feeling overwhelmed? Trying to manage the stresses of parenting?



Join our research into a new parenting group for parents of children, aged 2-11, who experience strong emotions and struggle to trust in relationships.

- Learn discipline strategies that work
 - Improve communication
- Meet other parents who share your experience
 - Enjoy family life more

For more information, sign up here:

https://kclbs.eu.qualtrics.com/ife/form/SV_3luWeTjmKHZaKYC