



Monday 12th September 2022

# Student Bulletin

Creating Bright Futures for All

Through Life Transforming Learning



# Queen Elizabeth II 1952 to 2022



- ▶ On Thursday 8th September our nation lost its' beloved Queen
- ▶ She died at her favourite residence, Balmoral Castle
- ▶ She is succeeded by her eldest child, Prince Charles
- ▶ He was proclaimed King Charles III on Saturday 10th September
- ▶ The official coronation will take place in 2023
- ▶ Queen Elizabeth's funeral cortege left Scotland on Sunday. The Queen's body was accompanied by her daughter, Princess Anne
- ▶ The funeral of Queen Elizabeth will take place on Monday 19th September
- ▶ This will be a public holiday to allow everyone to remember the Queen in their own way



A close-up photograph of a wooden Scrabble board. Several wooden tiles are visible, some resting on the board and others scattered around. The tiles in the foreground clearly spell out the word 'JOB' in black capital letters. The 'J' tile has a subscript '8', the 'O' has a subscript '1', and the 'B' has a subscript '3'. Other tiles with letters like 'L', 'B', 'C', 'F', and 'N' are also visible in the background.

## Job of the week: Anaesthetist

- ▶ Every week the bulletin will have a careers focus with a 'Job of the week'
- ▶ Each short video provides information on a job that includes qualifications, salary, how to get there and what it entails
- ▶ [ANAESTHETIST](#)



# Festivals of the week

- ▶ Saturday 10th September-Sunday 25th September
- ▶ Pitru Paksha: A time when Hindus pay homage to their ancestors.
- ▶ During this time, it is believed that the souls of the ancestors descend to earth
- ▶ Families make offerings to their ancestors - often through food
- ▶ They avoid alcohol and strong-smelling food at this time and do not buy new/expensive items such as clothes as it is seen as an insult to the deceased



# Theme of the week

## International Literacy Day



# Year 9 CEIAG Event - Wednesday 14/9

- ▶ MFSH are coming in with some employers to run a 'Day in Life' activity
- ▶ The sessions will run across 2 periods - 1+2 then 3+4
- ▶ If you have DT or Art period 2, you go to the hall NOT to Maths
- ▶ Please can selected groups go straight to the hall at the start of p1 and p3

	Classes
Period 1	All Students from 9T2 - DT2/DT1/Ar1 (rest of students to remain in Maths with PHA/LGO)
Period 2	9T2/DT2 AGR 9T2/DT1 JSI 9T2/Ar1 SCM
Period 3	9L1/Hi1 SCA 9L1/Gg2 JWI
Period 4	9T1/DT2 AGR 9T1/DT1 JSI 9T1/Ar1 SCM

# New Student Leadership Team



After successful interviews with Mr. Blakelock, Miss Martin, and Mr Williams, we are delighted to announce our new Head Students **Mary Hustwayte** and **Jack Shipway**.

All our candidates were exceptional and they really demonstrated our Rye Values brilliantly.

We would additionally like to present our new Student Leaders who will make up the rest of the leadership team:

**Grace Kilkoyne, Ruby Starkey, Rachel Baker, Beth Ripley, Holly Stocker and Rocky Fenton.**





# New Student Ambassador Roles



To work alongside the Student Leadership team we would like to recruit a team of **Student Ambassadors** from across the year groups.

**We are looking for 2 Student Ambassadors per Tutor Group.**

## What does the role involve?

- The Student Ambassadors work as a team to represent the College.
- Their primary role is to act as good publicists for the Academy.
- Student ambassadors are called upon during the year for College Open Evening, Open Mornings, and a range of other events including Student Leadership events.
- You will be your Tutor Group's student representative.
- Becoming a Student Ambassador is great development experience for future leadership roles within school.

## Interested?

Please write a letter including why you would like to become a Student Ambassador and what qualities you think you can bring to the role.

**Deadline: Friday 16<sup>th</sup> September.**

**Please hand your letters into your tutor.**





# Steps to Success - Yr 11 students on the programme



All Yr 11 Students on this programme will be attending a two hour workshop with Anna on Friday, in room 10



Mrs Starkey will put the groupings up in her classroom - rm 33



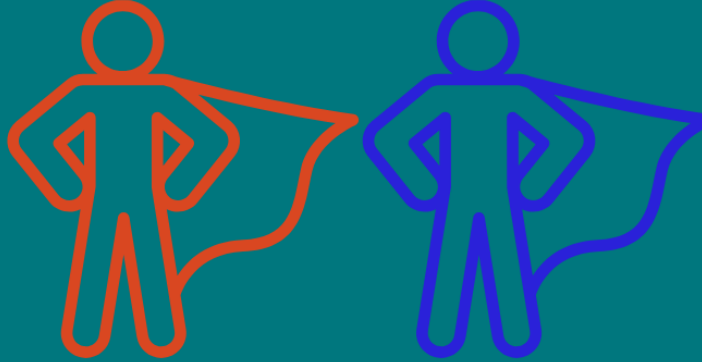
Please arrive on time



# PE Clubs

- ▶ The following clubs will be running from Monday:
- ▶ Monday 3:30pm until 4:30pm:
- ▶ Netball - All Years
- ▶ Boys Football - Years 7, 8 and 9
- ▶ Wednesday 3:30pm until 4:30pm:
- ▶ Girls Football - All years
- ▶ Boys Football - Year 10 and 11

# Celebrating exemplary Rye Values



**A huge well done and thank you to  
Henry and Thomas in Year 9.  
Their quick thinking, sense of  
responsibility and support for a fellow  
student on the bus this week helped  
avoid a more serious medical situation  
and made the student feel safe and calm.  
We are very proud of you both.  
You are fantastic examples of all our  
Rye College Values**



**WE ARE  
KIND**



**WE ARE  
EMPLOYABLE**



# Year 9 Geography Club

Thursdays, after School in Rm 4







# Year 7 & 8 Geography Club

Second Break every Wednesday in Rm 4  
Come along, bring your lunch and join in  
with some geography based activities.



# Year 10 GCSE Choices - Message from Mr Rickard

No student will be allowed to change their option subjects after Monday 19<sup>th</sup> September.

If any student wishes to discuss their current options and possible alternatives, please see Mr. Rickard in the leadership office at break times, before or after-school before this deadline.

# Mental Health support App



- ▶ Now available on Desktops!!
- ▶ Provides information and links to support your mental health.
- ▶ Please have a look

▶ Tellmi is a safe, anonymous app where you can talk about absolutely anything.

▶ From anxiety to autism, dating to depression, or self-harm to self-esteem, sharing your experiences with our awesome community helps you to feel better.

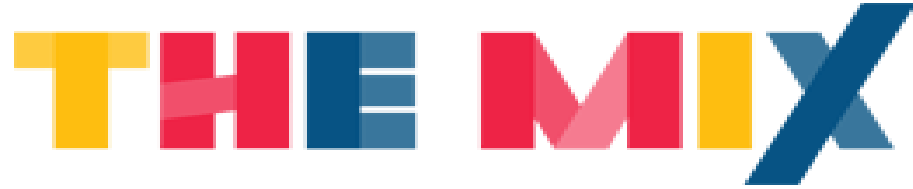
▶ Our moderators check everything to keep you safe and our in-house counsellors are always on hand if you need extra support.

▶ <https://www.tellmi.help/how-tellmi-works>

▶







- The Mix is an advice and information website for Under25's, and they also operate a helpline, one-to-one chat and a crisis messaging service.
- They have discussion forums, group chat and opportunities to get involved in volunteering and campaigning on loads of issues.
- They have also made a range of apps and online tools which provide interactive support around relationships, moving home, getting jobs, coping with stress and loads more.

[www.themix.org.uk](http://www.themix.org.uk)

# Email accounts

- ▶ Do **NOT** use your school email address to join websites/services.
- ▶ Your school email address should **only** be used for websites/services that your class teacher has told you to sign up to, for example Seneca, Wix, Sparx, Duolingo and Memrise.
- ▶ It should not be used for anything else!
- ▶ Including, but not limited to: a variety of social media sites [Facebook, Twitter, Instagram and Discord being but a few], Uber, various pizza outlets, Etsy, eBay, WizardingWorld, Apple ID, Wish, All4...
- ▶ For non-school activities, **you can create your own FREE email account** - examples include Gmail, Outlook.com, Yahoo Mail, iCloud Mail
- ▶ When you leave school, your school email account will be deleted and no longer exist. **It is easy to permanently lose access to places if you can't access the original email address.** It is much easier to change the email address associated with an account while you still have access.
- ▶ If you are using your school email address somewhere you shouldn't, **create a free email address and change your account settings.**

# Staying Safe



## STUDENT SAFEGUARDING & SUPPORT

Rye College is committed to **'Create Bright Futures for All'**.

Safeguarding is what we do to promote your safety and protect you from harm.



### Our Safeguarding Team

We encourage all students to use this support network. You can also email any queries to: [yourconcern@ryecollege.co.uk](mailto:yourconcern@ryecollege.co.uk)



Miss Carpenter  
Designated Safeguarding Lead (DSL)  
[Ejcarpenter@ryecollege.co.uk](mailto:Ejcarpenter@ryecollege.co.uk)  
Location: Rye College



Mrs Gull  
Assistant DSL  
[E.gull@ryecollege.co.uk](mailto:E.gull@ryecollege.co.uk)  
Location: Student Hub



Mr Downes  
Assistant DSL  
[E.dowdes@ryecollege.co.uk](mailto:E.dowdes@ryecollege.co.uk)  
Location: Rye College



Mrs Mills  
Assistant DSL  
[E.mills@ryecollege.co.uk](mailto:E.mills@ryecollege.co.uk)  
Location: School Office



Mrs Holmes  
Assistant DSL  
[E.holmes@ryecollege.co.uk](mailto:E.holmes@ryecollege.co.uk)  
Location: Student Hub



Mr Francis  
Assistant DSL  
[E.francis@ryecollege.co.uk](mailto:E.francis@ryecollege.co.uk)  
Location: Rye College

### External Contacts and Support Groups

There is a wide range of external support for you to access confidential help and support:

	The UK's leading children's mental health charity providing in-school support and expert training to help improve the emotional wellbeing of pupils, families, teachers and school staff. Our Place2Be School Project Manager is Inga Springell.	<a href="mailto:ispringell@ryecollege.co.uk">ispringell@ryecollege.co.uk</a> <a href="mailto:place2be@ryecollege.co.uk">place2be@ryecollege.co.uk</a> 020 7923 5500 Text: 85258
	Childline is a free service that offers direct support for young people, information to help you deal with bullying, drugs and alcohol, family relationships, questions around sexual relationships, personal feelings, and school life.	0800 1111 (9am - 3:30pm) 1-2-1 Counsellor Chat Service (9am - 10:30pm) <a href="http://www.childline.org.uk">www.childline.org.uk</a>
	The National Society for the Prevention of Cruelty to Children help to prevent child abuse, helps to rebuild children's lives and support families.	0800 1111 for children (Childline's 24-hour helpline) <a href="http://www.nspcc.org.uk">www.nspcc.org.uk</a>
	Shout 85258 is a free, confidential, 24/7 text messaging support service for anyone who is struggling to cope. They help people who are anxious, stressed, depressed, suicidal or overwhelmed and who need immediate support.	Text SHOUT to 85258 Free, confidential support via text, available 24/7
	i-Rock is a local East Sussex charity who can offer you advice and support on emotional and mental wellbeing, jobs, education and housing.	0800 502020 <a href="mailto:info@ironewall.org.uk">info@ironewall.org.uk</a>

## New email address

If you are worried about a friend or your own safety you can now email

[Yourconcern@ryecollege.co.uk](mailto:Yourconcern@ryecollege.co.uk)

If you do not want to talk to a member of staff about it.

This is also for sensible suggestions / concerns you may have about the college environment or behaviour of fellow students.

This will be checked weekly, and your concerns will be responded to.

# Staying Safe



## STUDENT SAFEGUARDING & SUPPORT

Rye College is committed to **'Create Bright Futures for All'**.

Safeguarding is what we do to promote your safety and protect you from harm.



### Our Safeguarding Team

We encourage all students to use this support network. You can also email any queries to: [yourconcern@ryecollege.co.uk](mailto:yourconcern@ryecollege.co.uk)



Miss Carpenter  
Designated Safeguarding Lead (DSL)  
[Ecarpenter@ryecollege.co.uk](mailto:Ecarpenter@ryecollege.co.uk)  
Location: Rye College



Mrs Gull  
Assistant DSL  
[lgull@ryecollege.co.uk](mailto:lgull@ryecollege.co.uk)  
Location: Student Hub



Mr Downes  
Assistant DSL  
[Edownes@ryecollege.co.uk](mailto:Edownes@ryecollege.co.uk)  
Location: Rye College



Mrs Mills  
Assistant DSL  
[Emills@ryecollege.co.uk](mailto:Emills@ryecollege.co.uk)  
Location: School Office



Mrs Holmes  
Assistant DSL  
[Elholmes@ryecollege.co.uk](mailto:Elholmes@ryecollege.co.uk)  
Location: Student Hub



Mr Francis  
Assistant DSL  
[Effrancis@ryecollege.co.uk](mailto:Effrancis@ryecollege.co.uk)  
Location: Rye College

### External Contacts and Support Groups

There is a wide range of external support for you to access confidential help and support:

	The UK's leading children's mental health charity providing in-school support and expert training to help improve the emotional wellbeing of pupils, families, teachers and school staff. Our Place2Be School Project Manager is Inga Springell.	<a href="mailto:ispringell@ryecollege.co.uk">ispringell@ryecollege.co.uk</a> <a href="mailto:place2be@ryecollege.co.uk">place2be@ryecollege.co.uk</a> 020 7923 5500 Text: 85258
	Childline is a free service that offers direct support for young people, information to help you deal with bullying, drugs and alcohol, family relationships, questions around sexual relationships, personal feelings, and school life.	0800 1111 (9am - 3:30pm) 1-2-1 Counsellor Chat Service (9am - 10:30pm) <a href="http://www.childline.org.uk">www.childline.org.uk</a>
	The National Society for the Prevention of Cruelty to Children help to prevent child abuse, helps to rebuild children's lives and support families.	0800 1111 for children (Childline's 24-hour helpline) <a href="http://www.nspcc.org.uk">www.nspcc.org.uk</a>
	Shout 85258 is a free, confidential, 24/7 text messaging support service for anyone who is struggling to cope. They help people who are anxious, stressed, depressed, suicidal or overwhelmed and who need immediate support.	Text SHOUT to 85258 Free, confidential support via text, available 24/7
	i-Rock is a local East Sussex charity who can offer you advice and support on emotional and mental wellbeing, jobs, education and housing.	0800 502020 <a href="mailto:info@zonewall.org.uk">info@zonewall.org.uk</a>

## New email address

If you are worried about a friend or your own safety you can now email

[Yourconcern@ryecollege.co.uk](mailto:Yourconcern@ryecollege.co.uk)

If you do not want to talk to a member of staff about it.

This is also for sensible suggestions / concerns you may have about the college environment or behaviour of fellow students.

This will be checked weekly, and your concerns will be responded to.



# Tutor Time

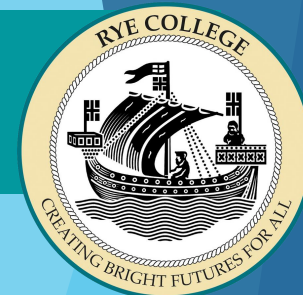


	Monday	Tuesday	Wednesday	Thursday	Friday
Year 7	Bulletin	Theme of the week	Wellbeing	Assembly	Quiz/acknowledgements
Year 8	Bulletin	Theme of the week	Wellbeing	Assembly	Quiz/acknowledgements
Year 9	Bulletin	Theme of the week	Assembly	Wellbeing	Quiz/acknowledgements
Year 10	Bulletin	Assembly	Wellbeing	Theme of the week	Quiz/acknowledgements
Year 11	Bulletin	Intervention	Intervention	Intervention	Assembly

**Attendance to Tutor time is compulsory**

- As soon as you get to your desk place your equipment on your desk
- Tutors will check uniform and equipment
- Take register
- Engage with set activity
- Recap Rye Values
- Dismissal

# MUGA Rota



	Before School	Break 1	Break 2
Monday	Year 7	Year 8	Year 9
Tuesday	Year 7	Year 10	Year 7
Wednesday	Year 7	Year 11	Year 8
Thursday	Year 7	Year 9	Year 10
Friday	Year 7	Year 7	Year 11

## Rules

**Only the year group allocated on that day on the MUGA - NO EXCEPTIONS (so don't ask!)**

No swearing

No eating / drinking

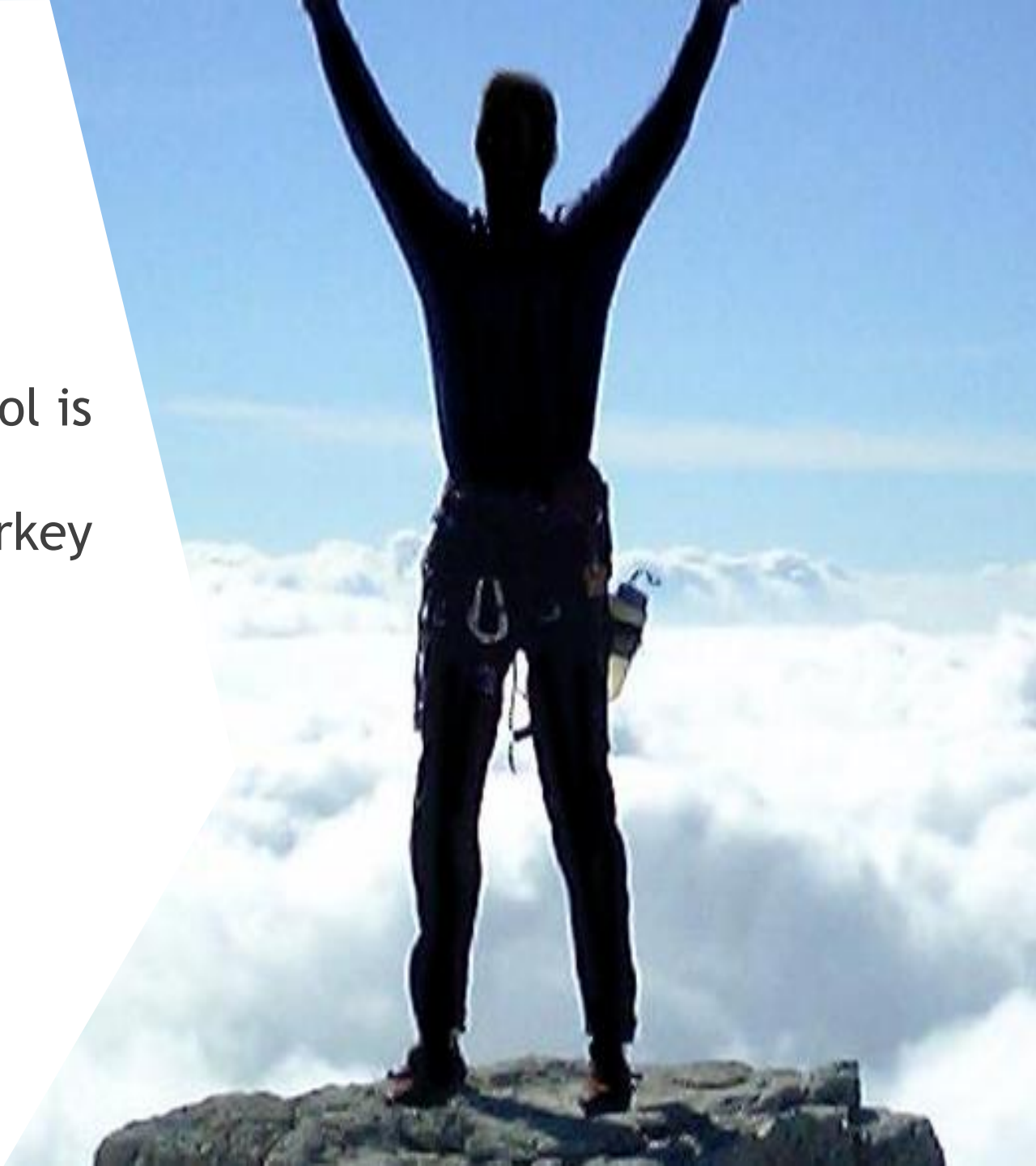
No slide tackles

Bring your own ball.

If rules are broken the Year group will lose their next MUGA slot

# Sharing achievements

- ▶ If you, or someone you know in school is proud of something they have done outside of school, please let Mrs Starkey know
- ▶ We would love to include this in our bulletin and put on our website and social media pages



# Rye College Values



**WE ARE  
PROUD**



**WE ARE  
POSITIVE**



**WE ARE  
EMPLOYABLE**



**WE ARE  
KIND**



**WE ARE  
COMMITTED**

**PROUD**



*At Rye College, we have a sense of pride in our work, ourselves and our community. We are mindful of the presentation of our work and the standards we present. We take pride in what we produce and pay attention to details.*

**Our Rye College Values**

**POSITIVE**



*At Rye College, we demonstrate a positive attitude to our learning, and relationships with others. We engage in our learning with a 'can-do' attitude. We embrace challenging and thought-provoking tasks.*

**Our Rye College Values**

**EMPLOYABLE**



*At Rye College, we develop and nurture diverse skills, talents and abilities that support our progress within and beyond the school. We grow ourselves so we can positively participate in our community and society as a whole.*

**Our Rye College Values**

**KIND**



*At Rye College, we show kindness and respect to all members of our community. We understand British values and act inclusively in our conduct. We celebrate what characteristics we share and those that make us different.*

**Our Rye College Values**

**COMMITTED**



*At Rye College, we possess an ambitious attitude towards our learning and academic progress. We strive towards fulfilling our potential, demonstrating an understanding of our own strengths and weaknesses.*

**Our Rye College Values**





# RYE COLLEGE STANDARDS IN OUR SCHOOL



## We work hard

- Arrive on time
- Line up and enter the room silently
- Start work immediately
- Bring our equipment
- Sit where directed
- Phones/headphones out of sight
- No toilet breaks in lessons (unless essential)



## We work with pride

- No slouching
- Engage in learning at all times
- Answer questions with full sentences – no 'I don't know'
- Present our work to a high standard
- Aspire to do our best at all times



## We participate, collaborate, contribute

- Wear uniform with pride
- Behave in line with Rye College expectations
- Be polite, respectful and follow instructions
- Work in groups when directed
- Be silent when directed



## We work consistently

- Write in blue or black pen
- Respond to feedback using purple pen
- Complete our homework to the best of our ability and on time
- Self / peer assess - green pen for what went well, pink pen for even better



## We respect our environment

- Don't litter – use bins
- No graffiti anywhere
- No running in corridor
- No eating or drinking (except water) in lessons and in corridors