



ENRICHMENT WEEK 2024

On-site Curriculum Pathways

.....

24th - 28th June 2024

Creating Bright Futures For All

WHAT ARE YOU GOING TO DO?



ENRICHMENT WEEK

ON-SITE CURRICULUM PATHWAYS

We are delighted to confirm that during the week of **Monday 24th – Friday 28th June 2024**, students in Years 7, 8 and 9 will take part in the school's Enrichment Week.

Enrichment is an important and rewarding week during the school year, as it is an opportunity for students to challenge themselves with new experiences, work alongside their peers and further develop positive relationships with students and colleagues.

During the week, all students will have the opportunity to go on at least one off-site trip. The trips have been chosen to provide students with fun, exciting and rewarding activities that develop new skills. Student and families have now made their 3 possible off-site trip activity choices.

Our on-site activities for when students are not on trips, will be based around the following pathways:

- Creative Arts;
- Food Technology;
- Production;
- Physical Education;
- STEM.

Please pay careful attention to what each Curriculum Pathway entails and make your preferences on the online form.

We will do our best to accommodate those choices based on an equal distribution of students in each pathway across the week.



CURRICULUM PATHWAY

SCIENCE

Curriculum Pathway Overview

Join our Science Department for a day of Crime Science Investigation! A member of the science department has been murdered! Students have to determine who committed the crime. Students are tasked with analyzing several pieces of evidence using forensics techniques.

Areas for personal development

- Team work
- Critical thinking
- Problem solving
- Decision making
- Observation and attention to detail
- Good communications and interpersonal skills



Staff: Ms Szczesnowska, Mrs Willis, Mr Outten, Ms Ranasinghe, Miss Brooker-O'Sullivan

Number of places per day: 50

Year groups: Year 7 - 9

Days the pathway runs: Mon, Tues, Wed, Fri AM

Is it a closed pathway (invited students only): No



CURRICULUM PATHWAY

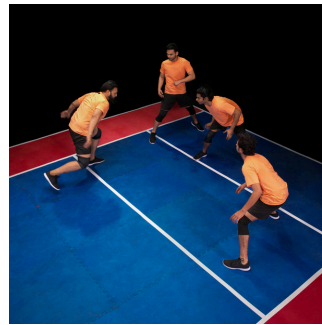
PHYSICAL EDUCATION

Curriculum Pathway Overview

Join our PE department to experience different sports which you may not have tried before and are not on the Curriculum. Students will have 3 sessions a day covering sports including Street Surfing, Kabaddi, American flag Football, Orienteering, Ultimate Frisbee, handball and more. If you want a great fun and active Enrichment Week choose our exciting pathway!

Areas for personal development

- Team work
- Fitness
- Good mental health
- Confidence
- Meeting new people
- Good communications and interpersonal skills



Staff: Mr Gambrell, Miss Mitchell, Mr Channer, Miss Staton

Number of places per day: 60

Year groups: Year 7 - 9

Days the pathway runs: Mon, Tues, Wed, Thurs, Fri AM

Is it a closed pathway (invited students only): No



CURRICULUM PATHWAY

FOOD TECHNOLOGY

Curriculum Pathway Overview

Join our Food Technology team for a day of Italian themed cooking! Our foodie focused days will give a greater depth level of preparing and cooking an Italian themed starter, main course and dessert. From making pizza dough from scratch, to nailing some patisserie skills - students will love getting involved in crafting delicious creations!

Areas for personal development

- Team work
- Creative flair
- Problem solving
- Decision making
- Observation and attention to detail
- Good communications and interpersonal skills



Staff: Mr Werrett and sous chef assistant!

Number of places per day: 20

Year groups: Year 7 - 9

Days the pathway runs: Mon, Wed, Thurs

Is it a closed pathway (invited students only): No

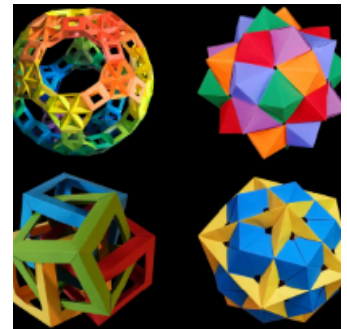


CURRICULUM PATHWAY

MATHS

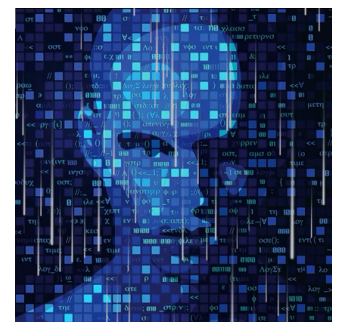
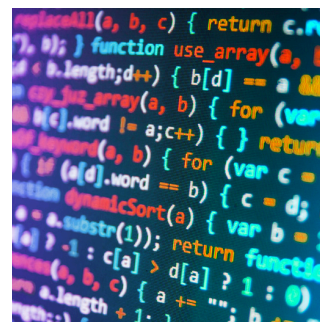
Curriculum Pathway Overview

Join our Maths team to discover the world of robot balls. This year the robot balls Sphero will go head to head in a tug of war! Will your coding win? Other activities with Sphero will involve using lego to build a frame for your robot ball and then racing against the other teams. Activity B will be a code breaking club where you get to decipher codes and create your own, later in the day you will build maths origami structures.



Areas for personal development

- Team work
- Critical thinking
- Problem solving
- Decision making
- Observation and attention to detail
- Mindfulness
- Creativity



Staff: Mrs Harrison, Miss Goodwin, Mr Diamond

Number of places per day: 20

Year groups: Year 7 - 9

Days the pathway runs: Mon, Tues, Wed, Fri Am

Is it a closed pathway (invited students only): No



CURRICULUM PATHWAY

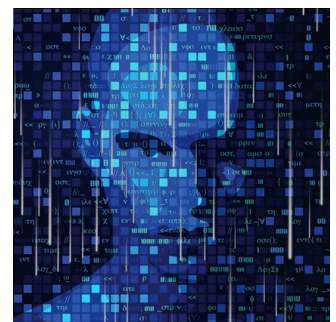
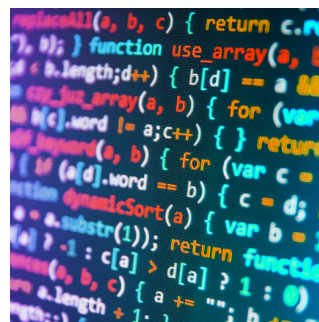
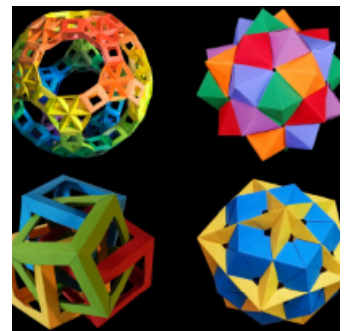
ENGINEERING

Curriculum Pathway Overview

Join our Engineering team to immerse yourself in robotic control! This year the team will be working in small teams to engineer a robotic gripper “hand” to complete a very fiddly task....

Areas for personal development

- Team work
- Critical thinking
- Problem solving
- Decision making
- Observation and attention to detail
- Good communications and interpersonal skills



Staff: Mr Simmonds and Mr Jordan

Number of places per day: 20

Year groups: Year 7 - 9

Days the pathway runs: Mon, Tues, Wed, Fri AM

Is it a closed pathway (invited students only): No



CURRICULUM PATHWAY

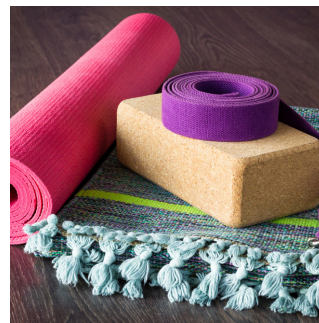
CREATIVE ARTS

Curriculum Pathway Overview

Join our Art Department as we learn about Set and Prop Design. We will be creating exciting props for our school production of Charlie and the Chocolate Factory. From giant lolly pops, to chocolate fish to enormous chocolate bars!

Areas for personal development

- Use your imagination
- Be creative
- Manage your time effectively
- Work collaboratively as a team on a project
- Communication skills
- Mindfulness



Staff: Mrs Charlton-Matthews, Mr Evans

Number of places per day: 40

Year groups: 7 - 9

Days the pathway runs: Mon, Tues, Wed, Thurs, Fri AM

Is it a closed pathway (invited students only): No



CURRICULUM PATHWAY

PRODUCTION

Curriculum Pathway Overview

The cast and crew of our Summer production of Charlie and the Chocolate Factory will spend the week rehearsing for the show as well as learning about stage management, set design and the working life of a performing artist. This pathway includes an Enrichment Trip offer to see Wicked The Musical on Wednesday 26th June.

Mon - Tues - Set painting and focused scene rehearsal

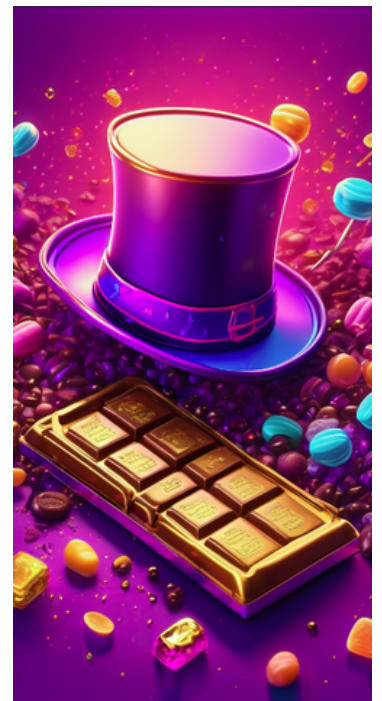
Wed - Trip

Thurs - Rehearsal - All cast are expected to attend

Fri AM - Rehearsals

Areas for personal development

- Use your imagination
- Be creative
- Boost confidence
- Work collaboratively as a team on a project
- Communication skills



Staff: Mr Harrison, Mrs Chillingworth, Ms Grennan, Mrs Greenough

Number of places per day: Cast member of show

Year groups: Year 7 - 9

Days the pathway runs: Mon, Tues, Thurs, Fri AM

Is it a closed pathway (invited students only): Yes