



Monday 23rd March 2023

Student Bulletin

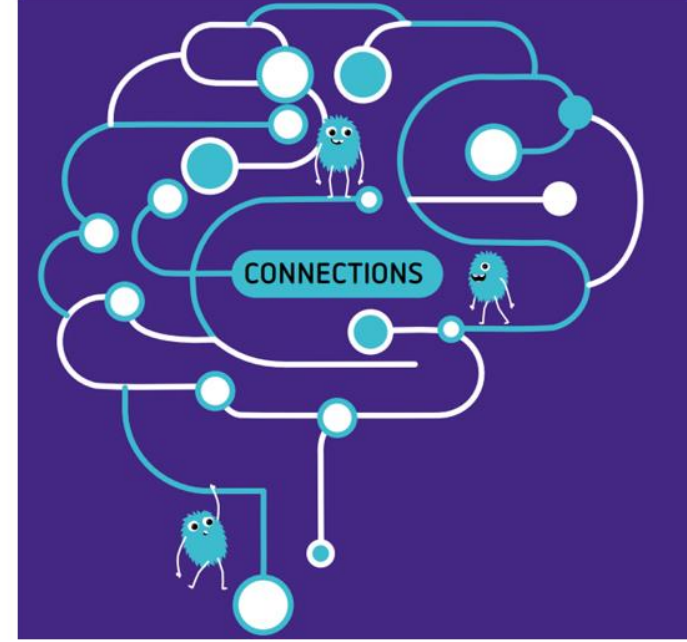


Creating Bright Futures for All

Through Life Transforming Learning



Theme of the week - British Science Week

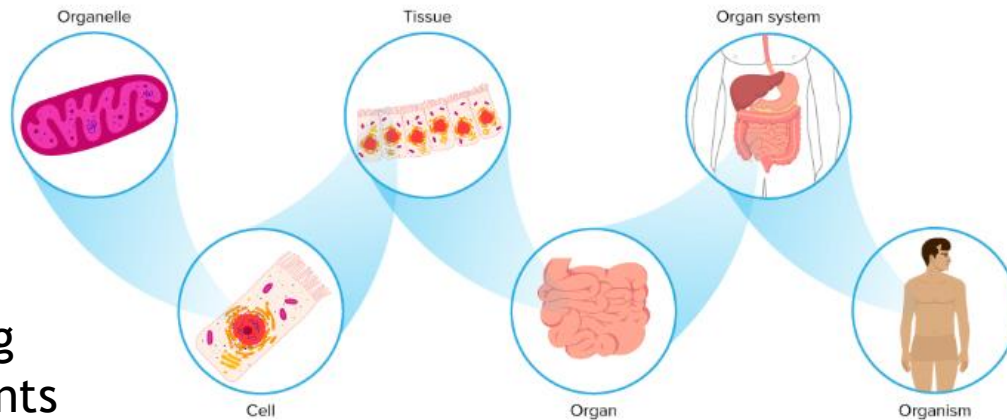


Time to Get Crafty Competition

Who can show how the human body is created from connections in the craftiest way?

- Baking
- Sewing
- Crochet
- Art of any kind

Our body is an amazing collection of components that all connect and work together to create us!

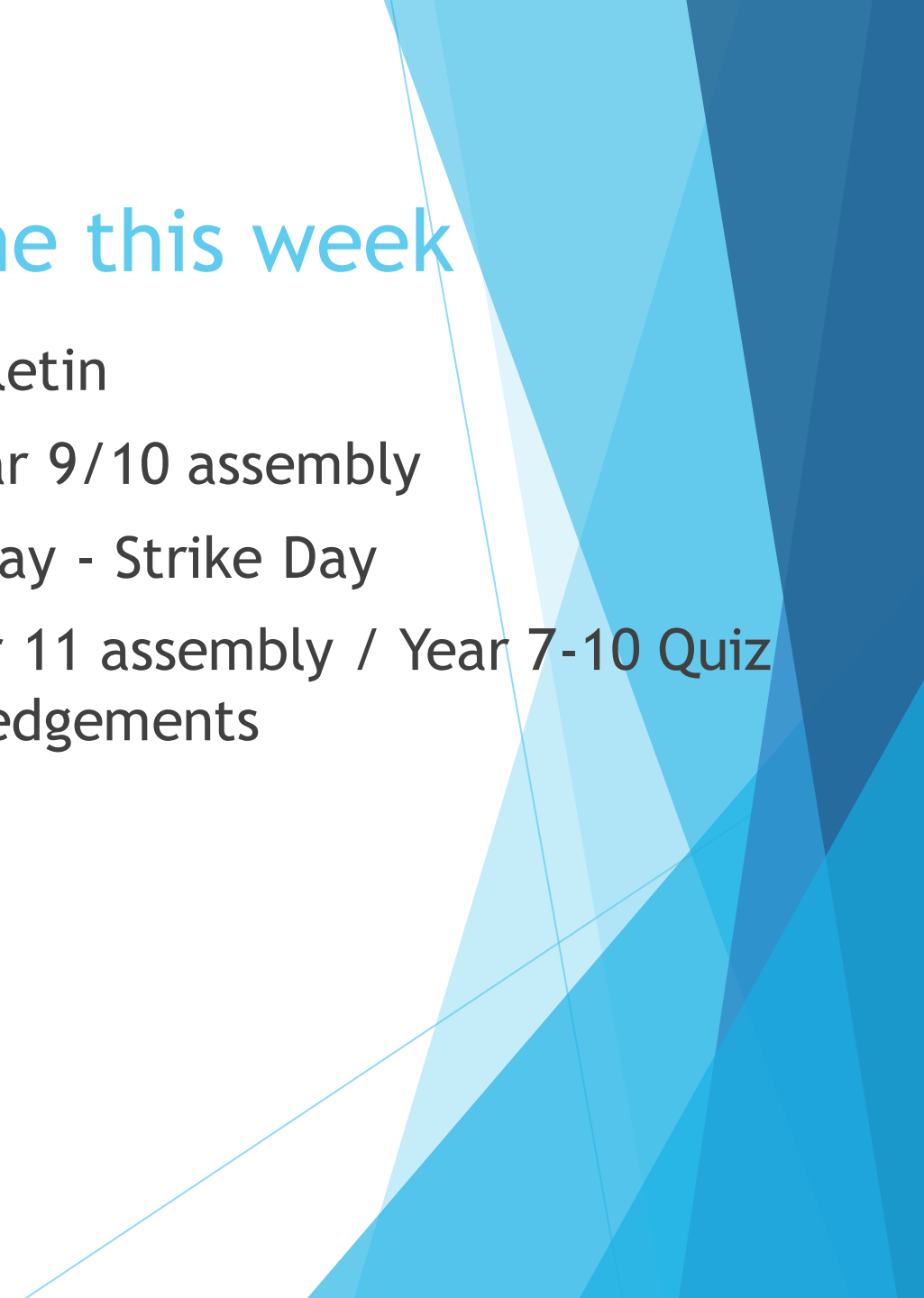


Please bring your entries into science for Monday 20th March for your chance to win a prize.

The science department will come together to vote and then announce the top 3 winners of the competition in the bulletin on Monday 27th March

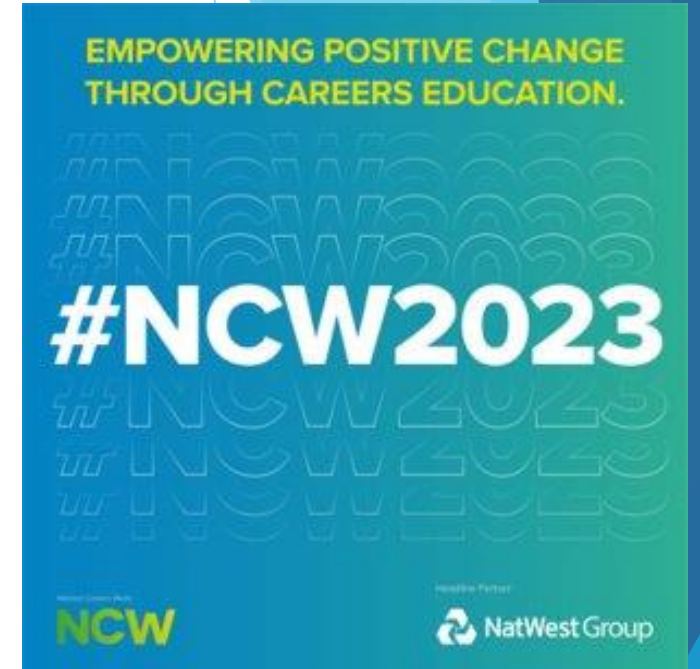


Tutor Time this week

- ▶ Monday - Bulletin
 - ▶ Tuesday - Year 9/10 assembly
 - ▶ Weds/Thursday - Strike Day
 - ▶ Friday - Year 11 assembly / Year 7-10 Quiz and acknowledgements
- 

National Careers Week

- ▶ Well done to all students in Year 7-9 who attended the careers fair
- ▶ Your behaviour was impeccable. You were curious, confident, engaged, well mannered and kind to all employers - Demonstrating all of our Rye Values!
- ▶ You received some wonderful feedback from the employers
- ▶ I wanted to say what an absolute pleasure it was to meet so many of the students of Rye College and how impressed we were at their confidence, good manners and keenness to listen. I fully appreciate how daunting it must have been going in to a hall filled with professional business people, tasked with approaching and speaking to them to find out about the world of careers. The students should be justly proud of their efforts and their teachers too in preparing them for the occasion.
- ▶ I was incredibly impressed with the ability of the students to engage with all of us. A fantastic life skill. Many students really touched my heart with their praise of the app and their eagerness to listen about adapting to life circumstances.





QR Code Competition

- ▶ Don't forget to hand in your entries to your form tutor who will pass on to Mrs Starkey
- ▶ Completed entries will be entered into a draw to win a £20 voucher
- ▶ £10 vouchers also available for the best completed entries
- ▶ Return entries to reception or Mrs Starkey by the end of Monday 13th March



A close-up photograph of wooden letter blocks on a wooden surface. Three blocks are arranged in a light-colored wooden tray, spelling out the word 'JOB'. The 'J' block has a subscript '8', the 'O' block has a subscript '1', and the 'B' block has a subscript '3'. Several other letter blocks are scattered around the tray on the wooden surface.

Job of the week: Zoologist



**WE ARE
EMPLOYABLE**

- ▶ Every week the bulletin will have a careers focus with a 'Job of the week'
- ▶ Each short video provides Labour Market Information (LMI) on a job that includes qualifications, salary, how to get there and what it entails
- ▶ [ZOOLOGIST](#)



Noise Levels in Work Areas and Littering

Can all students please be reminded that when using the corridor between the hall and science classrooms to **walk calmly and quietly**. This is a professional working area. Students who are running, swearing and shouting are disrupting our staff members who work in this area and are not creating a good impression of our school to visitors. It is a very poor reflection of our Rye College Values.

We are **PROUD** of our school and find it sad to see the current level of littering around school.

Food waste trodden into carpets or left **NEXT** to a bin is completely unacceptable and something we should **NEVER** see.
Please dispose of your litter correctly in one of the many bins around school.



A copy of the weekly menu can also be found [here](#) on our website.

 **Fruity!**  **Nutritionist's Choice**  **Vegetarian**  **Oily fish**  **Wholegrain**  **Halal Available**

Rye College Fitness Suite:



- ▶ Morning 8:15 till 8:45am:
- ▶ Monday: Year 7
- ▶ Tuesday: Year 9
- ▶ Wednesday: Year 8
- ▶ Thursday: Year 10 & 11

- ▶ Afterschool 3:30 till 4:20pm:
- ▶ Monday: Year 10 & 11
- ▶ Tuesday: Year 8
- ▶ Wednesday: Year 9
- ▶ Thursday: Year 7



PE Fixtures

- ▶ 22nd March Year 8 Boys Football (Away)
- ▶ Year 7 - 10 Girls Basketball
- ▶ Students interested in playing in any of the above fixtures need to see Miss Mitchell

PE Clubs

- ▶ All after school clubs run from 3:20 to 4:20
- ▶ Monday: All Years Netball
- ▶ Tuesday: Boys Year 7 - 10 Skiltek Football - £4 per session
- ▶ Thursday: Year 7 - 10 Girls Skiltek Football - £4 per session



Coding Competition

- ▶ Amazon's brand-new coding competition for ages 13-18 invites students to explore the potential of Artificial Intelligence (AI) and be in with the chance of winning some amazing prizes.
- ▶ Students can work on this from home and access free resources to help them learn how to code and to learn about artificial intelligence.
- ▶ Mrs Harrison will be available after school Tuesday to help students with their application
- ▶ [Amazon Future Engineer | Alexa Young Innovator Challenge](#)
- ▶ Next year the Maths department will launch this as a club



New! - Dance Club

- ▶ Year 7+8
- ▶ Wednesday lunchtime 1:50 - 2:15
- ▶ School uniform ok to wear (no shoes)
- ▶ Shorts to be worn under skirts
- ▶ Bring food if needed
- ▶ All welcome!



New Cricket Opportunities for everyone



**RYE CRICKET CLUB
GIRLS SECTION 2023**

Venue:
Rye Sports Centre
Cost: £40.
New participants £30
(first two weeks free).

This year Rye CC is forming a girls section!
We start Tuesday 7th March for 8 weeks.

7:00-8:00pm Girls only sessions (Supported by
Sussex County Womens Cricket Club coaches).

Contact: Martin Blincow for info / to sign up.
Mobile: 07535 482006 / email: blincsfamily@aol.com



**RYE CRICKET CLUB
YEAR 7-11 HARDBALL**

Venue:
Rye Sports Centre
Cost: £40.
New participants £30
(first two weeks free).

This year Rye CC is running Years 7-11 hardball
cricket training sessions.

We start Thursday 2nd March for 8 weeks.

7:00-8:00pm Mixed ability hard ball session.

Contact: Martin Blincow for info / to sign up.
Mobile: 07535 482006 / email: blincsfamily@aol.com



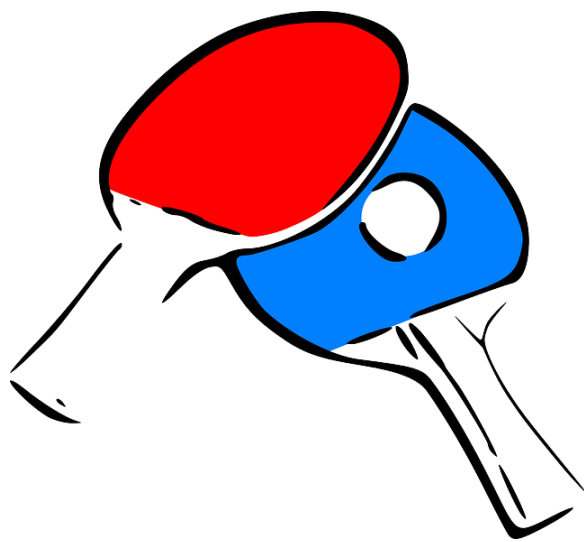
**WE ARE
POSITIVE**



**WE ARE
COMMITTED**



Table-Tennis Club



Rye College Table Tennis Club

Tuesdays

3.20pm to 4.30pm

School Gym

Beginners Welcome. Equipment Provided

Great Fun and Very Social

Fun and Games, improve your skills or learn new ones.

Challenge the Robot

Bring a Friend or Make New Ones

First 2 Sessions Free for Students

Sport not your thing? This might be just for you!

See PE Staff for Information or **Just Turn Up**

*Qualified Table Tennis England Coach in Attendance.



Tel 07803138881

www.tabletennisrother.co.uk

A Table Tennis England Premier Club & Sport England Club Mark Accredited

Crochet Club

- ▶ All years Welcome
- ▶ Room 4
- ▶ Wednesdays 3.20 - 4:00



Geography Club

- ▶ Years 7 - 9
- ▶ Room 4
- ▶ Thursdays 3.20 - 4:00





Introducing - Comic Club!



New! - Comic Club:
All Comic enthusiasts
are welcome to join.

★ A new club for Comic lovers ★

Browse and read our growing selection
of graphics based novels & comics

★ Wednesdays - Library - 1st Break ★

Science Club

- ▶ Continues after school on a Tuesday
- ▶ 3:20 to 4:00 in room 25
- ▶ The theme will be Marine Biology



Pride Group

Room 26 - Mrs Willis
Tuesday breaktime
All welcome



**WE ARE
PROUD**



**WE ARE
POSITIVE**



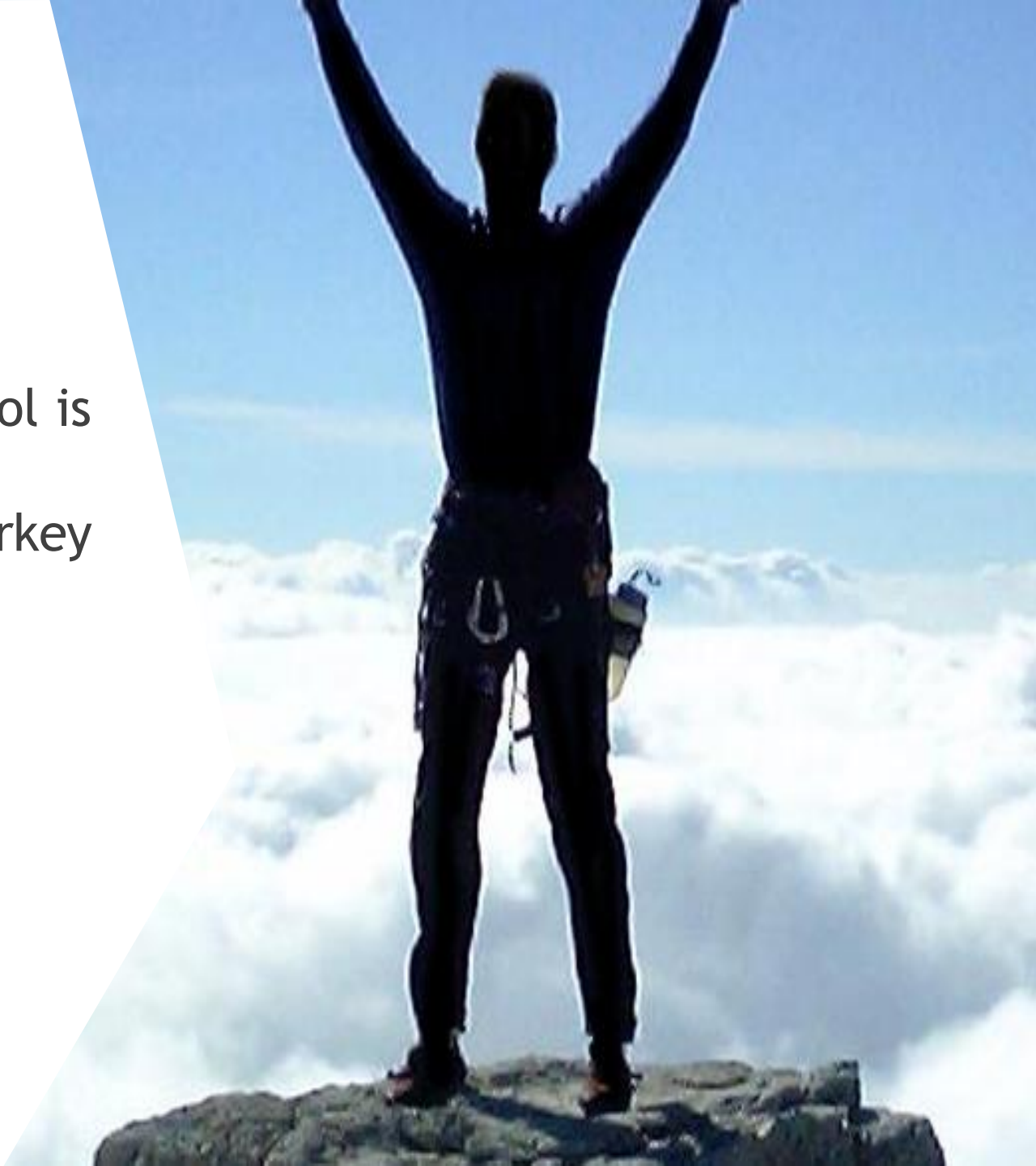
**WE ARE
KIND**



Daniel Quasar/Facebook

Sharing achievements

- ▶ If you, or someone you know in school is proud of something they have done outside of school, please let Mrs Starkey know
- ▶ We would love to include this in our bulletin and put on our website and social media pages



Staying Safe



STUDENT SAFEGUARDING & SUPPORT

Rye College is committed to **'Create Bright Futures for All'**.
Safeguarding is what we do to promote your safety
and protect you from harm.



Our Safeguarding Team

We encourage all students to use this support network. You can also email any queries to: yourconcern@ryecollege.co.uk



Miss Carpenter
Designated Safeguarding Lead (DSL)
E.carpenter@ryecollege.co.uk
Location: Rye College



Mrs Gull
Assistant DSL
E.gull@ryecollege.co.uk
Location: Student Hub



Mr Downes
Assistant DSL
E.downes@ryecollege.co.uk
Location: Rye College



Mrs Mills
Assistant DSL
E.mills@ryecollege.co.uk
Location: School Office



Mrs Holmes
Assistant DSL
E.holmes@ryecollege.co.uk
Location: Student Hub



Mr Francis
Assistant DSL
E.francis@ryecollege.co.uk
Location: Rye College

External Contacts and Support Groups

There is a wide range of external support for you to access confidential help and support:

	The UK's leading children's mental health charity providing in-school support and expert training to help improve the emotional wellbeing of pupils, families, teachers and school staff. Our Place2Be School Project Manager is Inga Springell.	ispringell@ryecollege.co.uk place2be@ryecollege.co.uk 020 7923 5500 Text: 85258
	Childline is a free service that offers direct support for young people, information to help you deal with bullying, drugs and alcohol, family relationships, questions around sexual relationships, personal feelings, and school life.	0800 1111 (9am - 3:30pm) 1-2-1 Counsellor Chat Service (9am-10:30pm) www.childline.org.uk
	The National Society for the Prevention of Cruelty to Children help to prevent child abuse, helps to rebuild children's lives and support families.	0800 1111 for children (Childline's 24-hour helpline) www.nspcc.org.uk
	Shout 85258 is a free, confidential, 24/7 text messaging support service for anyone who is struggling to cope. They help people who are anxious, stressed, depressed, suicidal or overwhelmed and who need immediate support.	Text SHOUT to 85258 Free, confidential support via text, available 24/7
	i-Rock is a local East Sussex charity who can offer you advice and support on emotional and mental wellbeing, jobs, education and housing.	0800 502020 info@zonewall.org.uk

New email address

If you are worried about a friend or your own safety you can now email

Yourconcern@ryecollege.co.uk

If you do not want to talk to a member of staff about it.

This is also for sensible suggestions / concerns you may have about the college environment or behaviour of fellow students.

This will be checked weekly, and your concerns will be responded to.

Tutor Time



	Monday	Tuesday	Wednesday	Thursday	Friday
Year 7	Bulletin	Theme of the week	Wellbeing	Assembly	Quiz/acknowledgements
Year 8	Bulletin	Theme of the week	Wellbeing	Assembly	Quiz/acknowledgements
Year 9	Bulletin	Theme of the week	Assembly	Wellbeing	Quiz/acknowledgements
Year 10	Bulletin	Assembly	Wellbeing	Theme of the week	Quiz/acknowledgements
Year 11	Bulletin	Intervention	Intervention	Intervention	Assembly

Attendance to Line-up and Tutor time is compulsory

- As soon as you get to your desk place your equipment on your desk
- Tutors will check uniform and equipment
- Take register
- Engage with set activity
- Recap Rye Values
- Dismissal

MUGA Rota



	Before School	Break 1	Break 2
Monday	Year 7	Year 8	Year 9
Tuesday	Year 7	Year 10	Year 7
Wednesday	Year 7	Year 11	Year 8
Thursday	Year 7	Year 9	Year 10
Friday	Year 7	Year 7	Year 11

Rules

Only the year group allocated on that day on the MUGA - NO EXCEPTIONS (so don't ask!)

No swearing

No eating / drinking

No slide tackles

Bring your own ball.

If rules are broken the Year group will lose their next MUGA slot

Rye College Values



**WE ARE
PROUD**



**WE ARE
POSITIVE**



**WE ARE
EMPLOYABLE**



**WE ARE
KIND**



**WE ARE
COMMITTED**

PROUD



At Rye College, we have a sense of pride in our work, ourselves and our community. We are mindful of the presentation of our work and the standards we present. We take pride in what we produce and pay attention to details.

Our Rye College Values

POSITIVE



At Rye College, we demonstrate a positive attitude to our learning, and relationships with others. We engage in our learning with a 'can-do' attitude. We embrace challenging and thought-provoking tasks.

Our Rye College Values

EMPLOYABLE



At Rye College, we develop and nurture diverse skills, talents and abilities that support our progress within and beyond the school. We grow ourselves so we can positively participate in our community and society as a whole.

Our Rye College Values

KIND



At Rye College, we show kindness and respect to all members of our community. We understand British values and act inclusively in our conduct. We celebrate what characteristics we share and those that make us different.

Our Rye College Values

COMMITTED



At Rye College, we possess an ambitious attitude towards our learning and academic progress. We strive towards fulfilling our potential, demonstrating an understanding of our own strengths and weaknesses.

Our Rye College Values