



Monday 20th March 2023

Student Bulletin




Creating Bright Futures for All

Through Life Transforming Learning



Theme of the week - World Maths Day

A close-up photograph of wooden letter blocks on a wooden surface. Three blocks are arranged in a light-colored wooden tray, spelling out the word 'JOB'. The 'J' block has a subscript '8', the 'O' block has a subscript '1', and the 'B' block has a subscript '3'. Other letter blocks are scattered around the tray, including 'B', 'C', 'F', and 'N' with various subscripts.

Job of the week: Acoustician



**WE ARE
EMPLOYABLE**

- ▶ Every week the bulletin will have a careers focus with a 'Job of the week'
- ▶ Each short video provides Labour Market Information (LMI) on a job that includes qualifications, salary, how to get there and what it entails
- ▶ [ACOUSTICIAN](#)



Tutor Time this week

- ▶ Monday - Bulletin
- ▶ Tuesday - Year 10 assembly / Year 7-9
Theme of the week
- ▶ Wednesday - Year 9 assembly / Year 7,8,10
Wellbeing
- ▶ Thursday Year 7&8 assembly / Year 9
wellbeing / Year 10 Theme of the week
- ▶ Friday - Year 11 assembly / Year 7-10 Quiz
and acknowledgements

Year 7 University Game



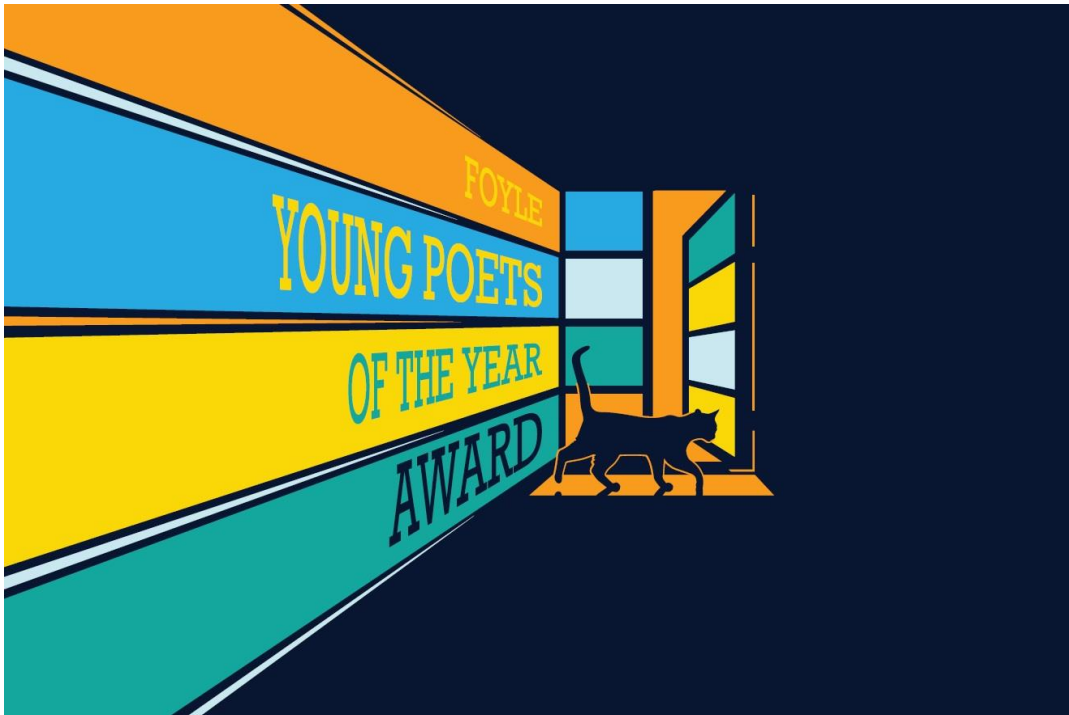
University of Brighton

- ▶ Today the University of Brighton are coming in to visit year 7 and deliver their 'University game'
- ▶ This provides an opportunity to learn all about University life and to speak with Ambassadors about their experience
- ▶ The game will take place in the library, so you will need to go straight there to register

Period 1	DWi Life Education 7L2/Le2
Period 2	BOu Science 7S1/Sc1
Period 3	RSt English 7E1/En1
Period 4	EFO Science 7S2/Sc2 + Keegan G, Aggie R-K and Rowan B Johnie R-W, Holly W and Ely W who have the game p1 will need to join the other Science class p4

World Poetry Day Competition

UNESCO first adopted 21 March as World Poetry Day in 1999, with the aim of supporting linguistic diversity through poetic expression and increasing the opportunity for endangered languages to be heard. World Poetry Day is the occasion to honour poets, revive oral traditions of poetry recitals, promote the reading, writing and teaching of poetry, foster the convergence between poetry and other arts such as theatre, dance, music and painting, and raise the visibility of poetry in the media.



The Foyle Young Poets of the Year Award is one of the biggest and most established prizes for young people aged 11 – 17 in the world. If you're an aspiring writer, enter your poems to the competition at foyleyoungpoets.org by 31 July 2023.

If you need any help with submissions, please ask in the Library as we can submit poems as a school and assist individuals to do so.



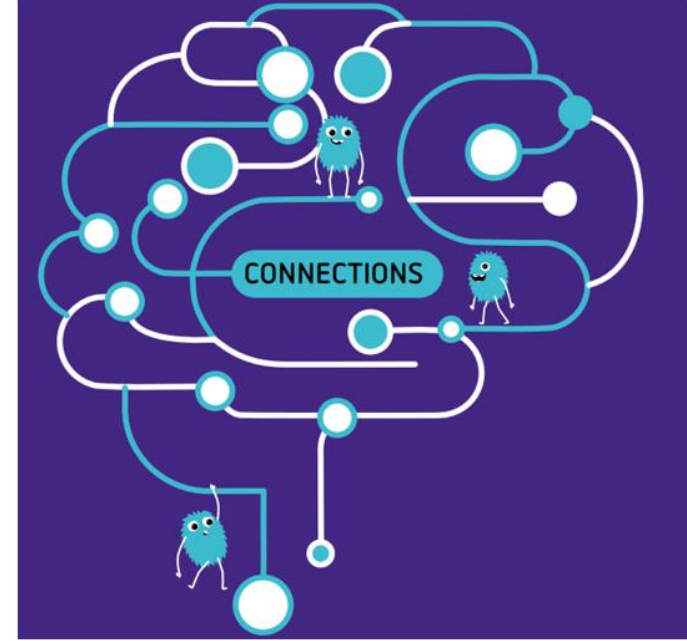
WE ARE
POSITIVE



WE ARE
EMPLOYABLE



WE ARE
COMMITTED

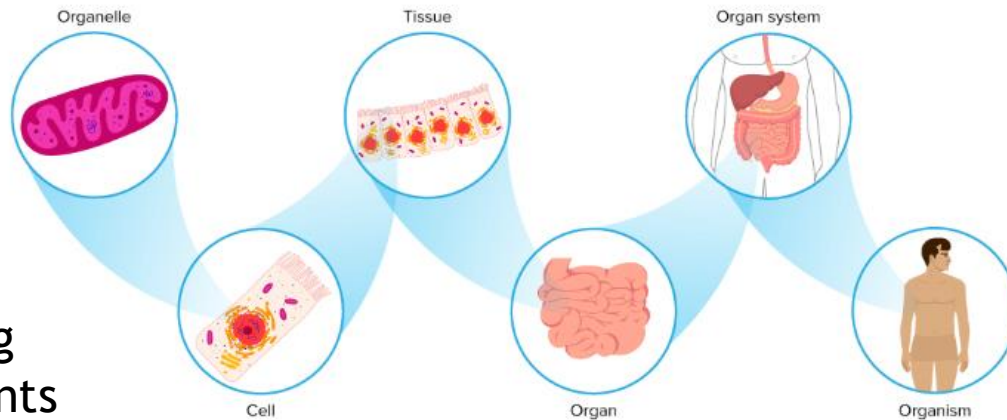


Time to Get Crafty Competition

Who can show how the human body is created from connections in the craftiest way?

- Baking
- Sewing
- Crochet
- Art of any kind

Our body is an amazing collection of components that all connect and work together to create us!



Entries in TODAY

Please bring your entries into science for Monday 20th March for your chance to win a prize.

The science department will come together to vote and then announce the top 3 winners of the competition in the bulletin on Monday 27th March

Participants Wanted!

Join a free interactive community project **SongMaps Rye** using the arts and science to look at how climate change affects your local area.

For more info
Email us at
strongbackproductions@gmail.com



- Are you curious about how rising seas and pollution are affecting Rye?
- Would you like to meet other people from across your area to ask local workers and science experts about what's really happening every day?
- Would you like to be part of a collective solution – coming together with poets, musicians, artists, scientists, fishermen, farmers and volunteers from Rye and nearby?

We're looking for 30 participants aged 13 years and upwards to explore how climate change and rising seas are affecting Rye. We want to record these changes using poetry, music and the visual arts informed by science.

5 FREE WORKSHOPS

**WORK WITH ACCLAIMED
ARTISTS & SCIENTISTS**

**FINAL CELEBRATORY
EVENT**

- ▶ This is a fabulous chance to get involved in a local community project that brings together the creative arts and science!
- ▶ The first workshop is on **Sunday 26th March**, at **Tilling Green Community Centre**, Andy Dinsdale from Strandliners will be speaking.
- ▶ You will be able to create poetry, music, sound and visual art in the workshops.
- ▶ If you are interested, you will need to email strongbackproductions@gmail.com You will be sent a consent form that will need to be returned via email or taken to the first workshop.
- ▶ Mrs Willett will be at the workshop to offer help to anyone who needs it.
- ▶ It will be amazing to have Rye College students contribute to this fantastic project.



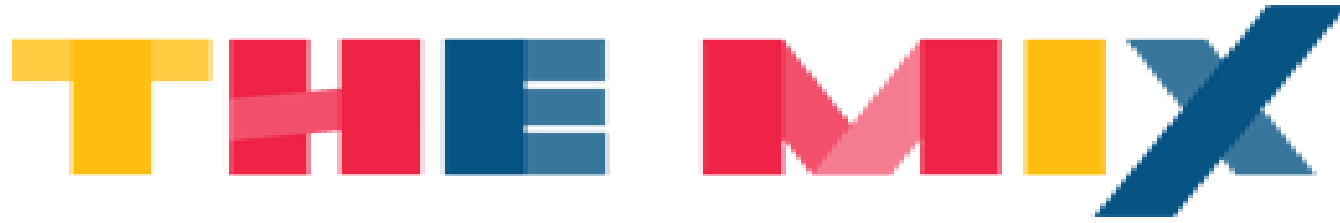
Supported using public funding by
**ARTS COUNCIL
ENGLAND**

childline

ONLINE, ON THE PHONE, ANYTIME

childline.org.uk | 0800 1111

- ▶ If you're under 19 you can confidentially call, chat online or email about any problem big or small.
- ▶ Opening times:
 -
- ▶ 0800 11 11
- ▶ <https://www.childline.org.uk/>



The Mix is the UK's leading support service for young people. We are here to help you take on any challenge you're facing - from mental health to money, from homelessness to finding a job, from break-ups to drugs. Talk to us via our online community, on social, through our free, confidential helpline or our counselling service.

Helpline

If you're under 25 and need help but don't know where to turn, call us for FREE on [0808 808 4994](tel:08088084994). We'll explore your situation with you and find organisations that may be able to help you further. We're open from 4pm to 11pm Monday to Saturday.

Canteen Menu This Week

Find out what's on
the Canteen Menu
this week

A copy of the weekly menu
can also be found [here](#) on
our website.

THIS WEEK'S Eats.

Week Three

W/C: 14/11, 05/12, 09/01, 30/01, 27/02, 20/03

FOOD UNION

	CHOICE One	CHOICE Two
MON	Chilli Con Carne 🍌❤️ Served with Wholegrain Rice and Spiced Sweetcorn	Vegetarian Chilli 🌱🍌❤️ Served with Wholegrain Rice
TUE	Mandarin BBQ Style Chicken Served with Stir Fried Vegetables and Peas	Chickpea and Tomato Masala 🌱❤️ Served with Wholegrain Rice
WED	Roast Turkey Served with Roast Potatoes or Yorkshire Pudding, Carrots and Gravy	Crispy Topped Veggie Pie 🌱 Served with Mashed Potato, Broccoli, Sweetcorn and Gravy
THUR	Buffalo Chicken Served with Lime Ranch Dressing, Herb Diced Potatoes, Cornsaw and Sweetcorn	Vegetarian Incredible Burger 🌱❤️ Served with Herb Diced Potatoes, Cornsaw and Sweetcorn
FRI	Battered Fish Served with Chips, Baked Beans and Peas	New Yorker Quorn Dog 🌱 Served with Chips, Peas, Baked Beans and Mixed Side Salad

AVAILABLE Daily




FOOD ON THE MOVE

HOT

Love Joes Burritos and Wraps
Freshly Baked Pizza
Pasta and Sauces
Topped Jacket Potatoes

COLD

A healthy selection of Fresh Salads,
Fresh Sandwiches, Baguettes and Wraps



🍌 Fruity! ❤️ Nutritionist's Choice 🌱 Vegetarian 🐟 Oily fish 🍌 Wholegrain 🌱 Halal Available

Rye College Fitness Suite:



- ▶ Morning 8:15 till 8:45am:
- ▶ Monday: Year 7
- ▶ Tuesday: Year 9
- ▶ Wednesday: Year 8
- ▶ Thursday: Year 10 & 11

- ▶ Afterschool 3:30 till 4:20pm:
- ▶ Monday: Year 10 & 11
- ▶ Tuesday: Year 8
- ▶ Wednesday: Year 9
- ▶ Thursday: Year 7



PE Fixtures

- ▶ 22nd March Year 8 Boys Football (Away)
- ▶ Year 7 - 10 Girls Basketball
- ▶ Students interested in playing in any of the above fixtures need to see Miss Mitchell

PE Clubs

- ▶ All after school clubs run from 3:20 to 4:20
- ▶ Monday: All Years Netball
- ▶ Tuesday: Boys Year 7 - 10 Skiltek Football - £4 per session
- ▶ Thursday: Year 7 - 10 Girls Skiltek Football - £4 per session



New! - Dance Club

- ▶ Year 7+8
- ▶ Wednesday lunchtime 1:50 - 2:15
- ▶ School uniform ok to wear (no shoes)
- ▶ Shorts to be worn under skirts
- ▶ Bring food if needed
- ▶ All welcome!



New Cricket Opportunities for everyone



**RYE CRICKET CLUB
GIRLS SECTION 2023**

Venue:
Rye Sports Centre
Cost: £40.
New participants £30
(first two weeks free).

This year Rye CC is forming a girls section!
We start Tuesday 7th March for 8 weeks.

7:00-8:00pm Girls only sessions (Supported by
Sussex County Womens Cricket Club coaches).

Contact: Martin Blincow for info / to sign up.
Mobile: 07535 482006 / email: blincsfamily@aol.com



**RYE CRICKET CLUB
YEAR 7-11 HARDBALL**

Venue:
Rye Sports Centre
Cost: £40.
New participants £30
(first two weeks free).

This year Rye CC is running Years 7-11 hardball
cricket training sessions.

We start Thursday 2nd March for 8 weeks.

7:00-8:00pm Mixed ability hard ball session.

Contact: Martin Blincow for info / to sign up.
Mobile: 07535 482006 / email: blincsfamily@aol.com



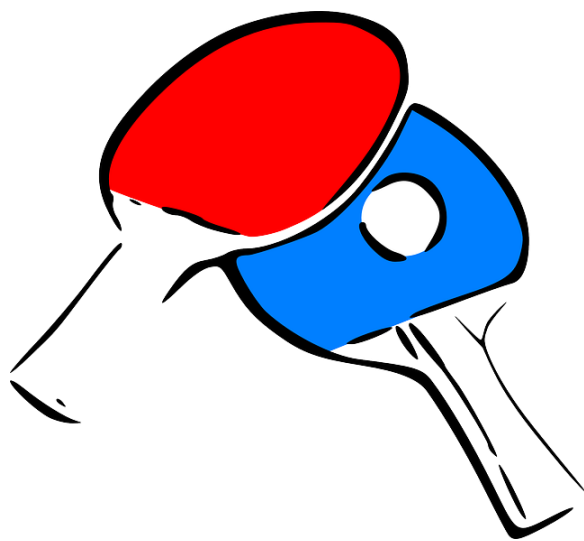
**WE ARE
POSITIVE**



**WE ARE
COMMITTED**



Table-Tennis Club



Rye College Table Tennis Club

Tuesdays

3.20pm to 4.30pm

School Gym

Beginners Welcome. Equipment Provided

Great Fun and Very Social

Fun and Games, improve your skills or learn new ones.

Challenge the Robot

Bring a Friend or Make New Ones

First 2 Sessions Free for Students

Sport not your thing? This might be just for you!

See PE Staff for Information or **Just Turn Up**

*Qualified Table Tennis England Coach in Attendance.



Tel 07803138881

www.tabletennisrother.co.uk

A Table Tennis England Premier Club & Sport England Club Mark Accredited

Crochet Club

- ▶ All years Welcome
- ▶ Room 4
- ▶ Wednesdays 3.20 - 4:00



Geography Club

- ▶ Years 7 - 9
- ▶ Room 4
- ▶ Thursdays 3.20 - 4:00





Introducing - Comic Club!



New! - Comic Club:
All Comic enthusiasts
are welcome to join.

✦ A new club for Comic lovers ✦

Browse and read our growing selection
of graphics based novels & comics

✦ Wednesdays - Library - 1st Break ✦

Science Club

- ▶ Continues after school on a Tuesday
- ▶ 3:20 to 4:00 in room 25
- ▶ The theme will be Marine Biology



Pride Group

Room 26 - Mrs Willis
Tuesday breaktime
All welcome



**WE ARE
PROUD**



**WE ARE
POSITIVE**



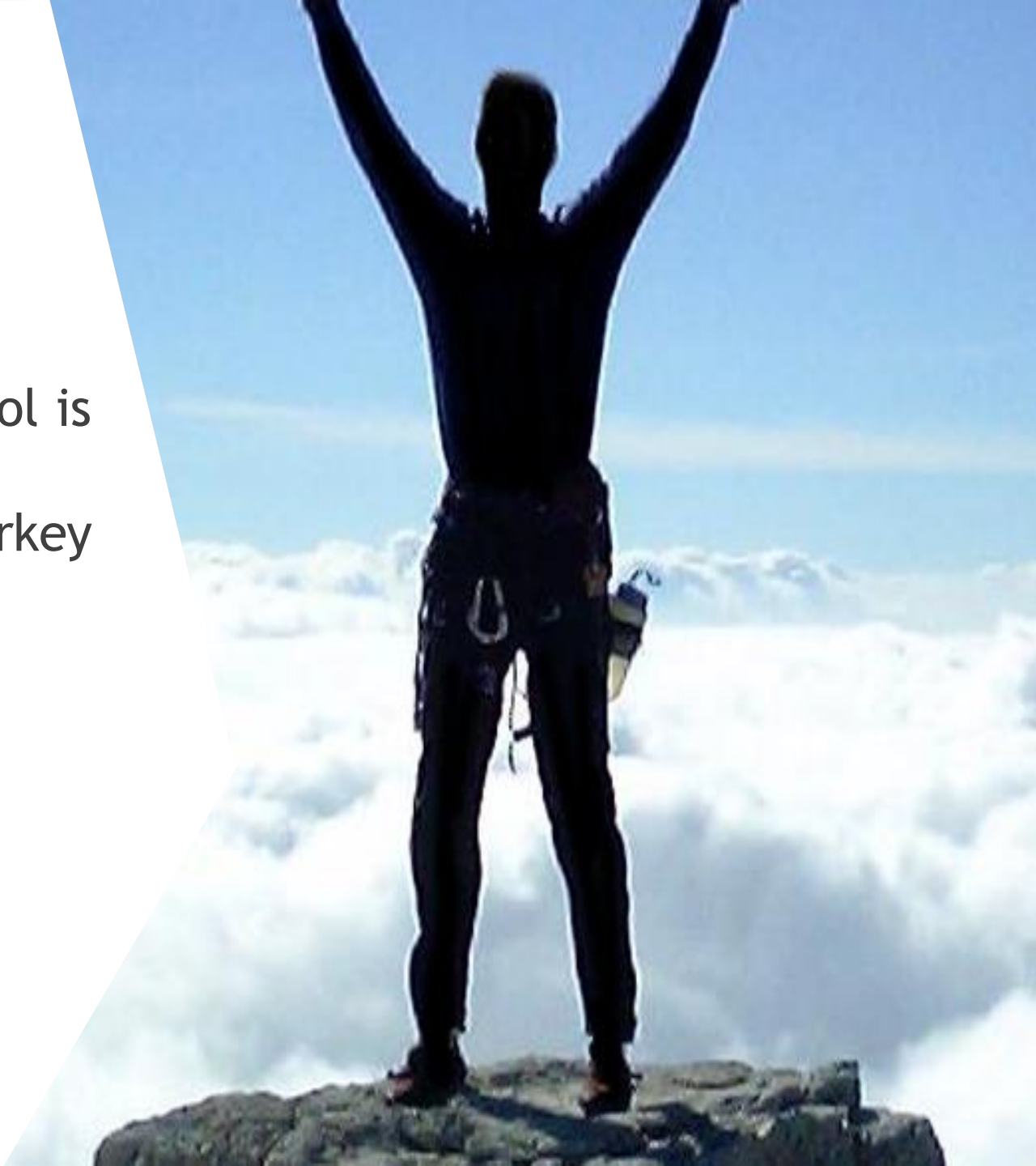
**WE ARE
KIND**



Daniel Quasar/Facebook

Sharing achievements

- ▶ If you, or someone you know in school is proud of something they have done outside of school, please let Mrs Starkey know
- ▶ We would love to include this in our bulletin and put on our website and social media pages



Staying Safe



STUDENT SAFEGUARDING & SUPPORT

Rye College is committed to **'Create Bright Futures for All'**.

Safeguarding is what we do to promote your safety and protect you from harm.



Our Safeguarding Team

We encourage all students to use this support network. You can also email any queries to: yourconcern@ryecollege.co.uk



Miss Carpenter
Designated Safeguarding Lead (DSL)
E.carpenter@ryecollege.co.uk
Location: Rye College



Mrs Gull
Assistant DSL
E.gull@ryecollege.co.uk
Location: Student Hub



Mr Downes
Assistant DSL
E.downes@ryecollege.co.uk
Location: Rye College



Mrs Mills
Assistant DSL
E.mills@ryecollege.co.uk
Location: School Office



Mrs Holmes
Assistant DSL
E.holmes@ryecollege.co.uk
Location: Student Hub



Mr Francis
Assistant DSL
E.francis@ryecollege.co.uk
Location: Rye College

External Contacts and Support Groups

There is a wide range of external support for you to access confidential help and support:

	The UK's leading children's mental health charity providing in-school support and expert training to help improve the emotional wellbeing of pupils, families, teachers and school staff. Our Place2Be School Project Manager is Inga Springell.	ispringell@ryecollege.co.uk place2be@ryecollege.co.uk 020 7923 5500 Text: 85258
	Childline is a free service that offers direct support for young people, information to help you deal with bullying, drugs and alcohol, family relationships, questions around sexual relationships, personal feelings, and school life.	0800 1111 (9am - 3:30pm) 1-2-1 Counsellor Chat Service (9am-10:30pm) www.childline.org.uk
	The National Society for the Prevention of Cruelty to Children help to prevent child abuse, helps to rebuild children's lives and support families.	0800 1111 for children (Childline's 24-hour helpline) www.nspcc.org.uk
	Shout 85258 is a free, confidential, 24/7 text messaging support service for anyone who is struggling to cope. They help people who are anxious, stressed, depressed, suicidal or overwhelmed and who need immediate support.	Text SHOUT to 85258 Free, confidential support via text, available 24/7
	i-Rock is a local East Sussex charity who can offer you advice and support on emotional and mental wellbeing, jobs, education and housing.	0800 502020 info@zonewall.org.uk

New email address

If you are worried about a friend or your own safety you can now email

Yourconcern@ryecollege.co.uk

If you do not want to talk to a member of staff about it.

This is also for sensible suggestions / concerns you may have about the college environment or behaviour of fellow students.

This will be checked weekly, and your concerns will be responded to.

Tutor Time



	Monday	Tuesday	Wednesday	Thursday	Friday
Year 7	Bulletin	Theme of the week	Wellbeing	Assembly	Quiz/acknowledgements
Year 8	Bulletin	Theme of the week	Wellbeing	Assembly	Quiz/acknowledgements
Year 9	Bulletin	Theme of the week	Assembly	Wellbeing	Quiz/acknowledgements
Year 10	Bulletin	Assembly	Wellbeing	Theme of the week	Quiz/acknowledgements
Year 11	Bulletin	Intervention	Intervention	Intervention	Assembly

Attendance to Line-up and Tutor time is compulsory

- As soon as you get to your desk place your equipment on your desk
- Tutors will check uniform and equipment
- Take register
- Engage with set activity
- Recap Rye Values
- Dismissal

Rye College Values



**WE ARE
PROUD**



**WE ARE
POSITIVE**



**WE ARE
EMPLOYABLE**



**WE ARE
KIND**



**WE ARE
COMMITTED**

PROUD



At Rye College, we have a sense of pride in our work, ourselves and our community. We are mindful of the presentation of our work and the standards we present. We take pride in what we produce and pay attention to details.

Our Rye College Values

POSITIVE



At Rye College, we demonstrate a positive attitude to our learning, and relationships with others. We engage in our learning with a 'can-do' attitude. We embrace challenging and thought-provoking tasks.

Our Rye College Values

EMPLOYABLE



At Rye College, we develop and nurture diverse skills, talents and abilities that support our progress within and beyond the school. We grow ourselves so we can positively participate in our community and society as a whole.

Our Rye College Values

KIND



At Rye College, we show kindness and respect to all members of our community. We understand British values and act inclusively in our conduct. We celebrate what characteristics we share and those that make us different.

Our Rye College Values

COMMITTED



At Rye College, we possess an ambitious attitude towards our learning and academic progress. We strive towards fulfilling our potential, demonstrating an understanding of our own strengths and weaknesses.

Our Rye College Values

MUGA Rota



	Before School	Break 1	Break 2
Monday	Year 7	Year 8	Year 9
Tuesday	Year 7	Year 10	Year 7
Wednesday	Year 7	Year 11	Year 8
Thursday	Year 7	Year 9	Year 10
Friday	Year 7	Year 7	Year 11

Rules

Only the year group allocated on that day on the MUGA - NO EXCEPTIONS (so don't ask!)

No swearing

No eating / drinking

No slide tackles

Bring your own ball.

If rules are broken the Year group will lose their next MUGA slot