



Monday 5th June 2023

Student Bulletin



Creating Bright Futures for All

Through Life Transforming Learning



Theme of the
week:
Pride Month

Pride has many purposes - here are a few:

- Raise awareness of the lives and experiences of LGBT+ folks
- Raise awareness of ongoing issues faced by the community
- Inspire action to improve lives of LGBT+ people
- Remember those who came before us
- Celebrate LGBT+ identities
- Celebrate the LGBT+ community around the world
- Show our support for the community (especially for allies)
- Find community

► <https://www.bbc.co.uk/newsround/av/40717297>



Tutor Time this week

- ▶ Monday- Bulletin
- ▶ Tuesday - Theme of the week
- ▶ Wednesday - Wellbeing
- ▶ Thursday - The great debate
- ▶ Friday - Weekly quiz and acknowledgements

A close-up photograph of a wooden Scrabble rack containing the tiles for the word 'JOB'. The tiles are light-colored wood with black lettering. The 'J' has an 8-point value, the 'O' has a 1-point value, and the 'B' has a 3-point value. Several other tiles are scattered on a wooden surface around the rack, including 'L', 'B', 'C', 'F', and 'N'.

Job of the week: Insurance Broker



**WE ARE
EMPLOYABLE**

- ▶ Every week the bulletin will have a careers focus with a 'Job of the week'
- ▶ Each short video provides Labour Market Information (LMI) on a job that includes qualifications, salary, how to get there and what it entails
- ▶ [INSURANCE BROKER](#)

East Sussex Library news

Summer Reading Challenge volunteer

- The Summer Reading Challenge encourages children aged 4 to 12 to read six books during the summer holiday.
- Working in the library, the Summer Reading Challenge Volunteer encourages children to enrol in the challenge, and motivates them to continue by giving out rewards for each book read.
- Full training will be given

Tasks

- Handing out reading rewards
- Talking to children aged 4-12 years and their parents/guardians about books and reading
- Motivating and encouraging children to complete the challenge
- Helping to collate statistics at the end of the challenge

Visit [Summer Reading Challenge volunteer | East Sussex County Council](#) for more details



New Student Leadership Team



After successful interviews, we are delighted to announce our new Head Students **Ava Charles-Graham** and **Kinga Feher**.

All of our candidates were exceptional and they really demonstrated our Rye Values brilliantly.

We would additionally like to present our new Student Leaders who will make up the rest of the leadership team:

Jasmine Haddock, Lewis Jenner, Ruby Cook, James Archer, Wren Leake, Connor Gibbs, George Wallace-Ottman, Liam McManus and Amelia Roberts.



Another successful trip to Rye Fish Market

- ▶ Another Year 9 class visited the Rye Fish Market
- ▶ Students were lucky enough to speak with a local fisherman, the shop manager and the owners of Chapman's of Rye
- ▶ Students got to hold live lobsters and even tried their hand at filleting fish!



Students Trespassing

- ▶ It has been brought to our attention that students have been going into the Love Lane allotments after school
- ▶ This is private property, so entry is classed as trespassing
- ▶ Students have also been unpleasant to allotment holders which is unacceptable
- ▶ Once we find out who is responsible, the students may be reported to the Police
- ▶ This behaviour brings the school into disrepute and goes against all of our Rye values



Year 10 Work Experience - 26-30 June



**WE ARE
EMPLOYABLE**

- ▶ There are still over 30 students who have not returned their work experience forms
- ▶ Without these students will not be able to complete their work placement
- ▶ These were emailed to parents and hard copies are available from reception or Mrs Starkey
- ▶ A letter confirming placements and next steps will be sent out this week
- ▶ If students wish to know their placement before receiving the letter, please see Mrs Starkey

Year 10 - East Sussex College - Hastings Taster Day

- ▶ Rye College allocated Monday 19th June
- ▶ Sign up online at <https://tasters.escevents.co.uk/>
- ▶ For the Hastings campus' – students will either be able to sign up to a **Station Plaza** Taster Day, or **Ore Valley** Taster Day. These are different campuses, but the taster will run on the same day. The courses offered at each campus will be clear when registering.
- ▶ Station Plaza is home to our A-Level courses and a whole range of vocational diplomas including Art and Design, Beauty, Business, Hair, Health and Social Care, Hospitality and Catering, Public Services, Sport, and Travel.
- ▶ Ore Valley is home to our Construction, Engineering, IT and Computing, and Music subjects.



Bexhill College Taster Day

- ▶ Enrolment for this closes today - 5th June
- ▶ If you have been unable to register, please contact marketing@bexhillcollege.ac.uk





Wanted for Science...

- ▶ Please can you save any 500ml empty plastic bottles
- ▶ These are needed for fun Science activities during enrichment week
- ▶ Please take to the Science dept

Year 11 exams - Breakfasts and revision sessions

- ▶ Optional revision sessions held every morning there is an exam
- ▶ Sessions run by subject specialists
- ▶ Free drinks and breakfasts available in the canteen from 8am
- ▶ Snacks and refreshments also provided in revision rooms
- ▶ This information has been emailed to students and parents and can also be found on the Rye College website

Date	Start	Subject	Component Title	Room
Mon 15 May	09:10	Engineering	Des Specs User Req Written	Room 32
Mon 15 May	13:00	Drama	Drama Written Paper	No breakfast session
Tue 16 May	09:10	Triple Biology	Biology Paper 1	Room 25
Tue 16 May	09:10	Combined Science	Biology Paper 1	Room 26
Wed 17 May	09:10	English Literature	Romeo and Juliet and Poetry Anthology	Room 103
Wed 17 May	13:00	PE - GCSE	Written Paper	No breakfast session
Thu 18 May	09:10	History	History Paper 1B Option A	Room 9
Fri 19 May	09:10	Maths	Non-Calculator Foundation Paper	Rooms 16 and 17
Fri 19 May	09:10	Maths	Non-Calculator Higher Paper	Rooms 18 and 19
Mon 22 May	09:10	Triple Chemistry	Chemistry Paper 1	Room 25
Mon 22 May	09:10	Combined Science	Chemistry Paper 1	Room 26
Mon 22 May	13:00	Geography	Geography Paper 1	No breakfast session
Tue 23 May	09:10	French	Listening and Reading	Room 102
Wed 24 May	09:10	English Literature	A Christmas Carol, An Inspector Calls and Unseen Poetry	Room 103
Wed 24 May	13:00	Sport Science	Risk of Sport Injuries Written	No breakfast session
Thu 25 May	09:10	Triple Physics	Physics Paper 1	Room 25
Thu 25 May	09:10	Combined Physics	Physics Paper 1	Room 26
Half term				
Mon 05 Jun	09:10	English Language	20 th Century Fiction and Narrative	Room 103
Mon 05 Jun	13:00	French	Writing	No breakfast session
Wed 07 Jun	09:10	GCSE Maths	Calculator Foundation Paper	Rooms 16 and 17
Wed 07 Jun	09:10	GCSE Maths	Calculator Higher Paper	Rooms 18 and 19
Wed 07 Jun	13:00	History	History Paper 2A Option A	No breakfast session
Thu 8 Jun	9:10	GCSE PE Sport	PE: Socio-cultural issues in Sport Psychology	Room 8
Fri 09 Jun	13:00	GCSE Geography	Geography Paper 2	Room 4
Fri 09 Jun	09:10	Triple Biology	Biology Paper 2	No breakfast session
Fri 09 Jun	09:10	Combined Science	Biology Paper 2	No breakfast session
Mon 12 Jun	09:10	English Language	21 st Century non fiction and 19 th Century Fiction and Transactional Writing	Room 103
Tue 13 Jun	09:10	Triple Chemistry	Chemistry Paper 2	Room 25
Tue 13 Jun	09:10	Combined Science	Chemistry Paper 2	Room 26
Wed 14 Jun	09:10	Maths	Calculator Foundation Paper	Rooms 16 and 17
Wed 14 Jun	09:10	Maths	Calculator Higher Paper	Rooms 18 and 19
Fri 16 Jun	09:10	Triple Physics	Physics Paper 1	Room 25
Fri 16 Jun	09:10	Combined Science	Physics Paper 1	Room 26
Fri 16 Jun	13:00	Geography	Geography Paper 3	No breakfast session
Tue 20 Jun	13:00	Dance	Dance Written Paper	No breakfast session

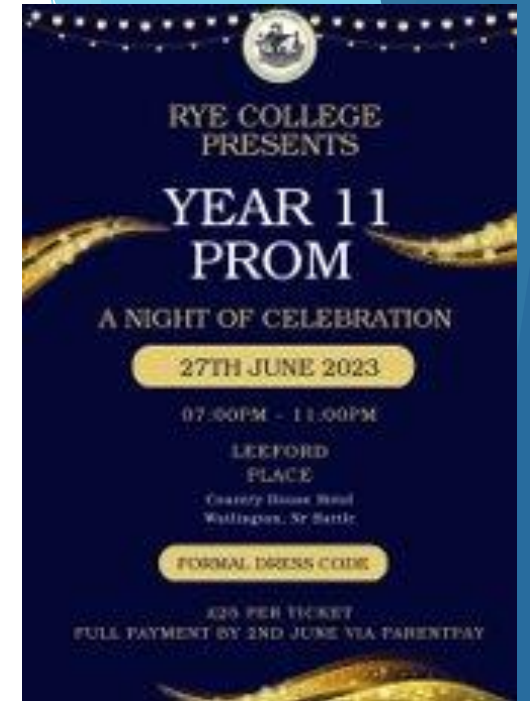
Year 11 Leavers Assembly



- ▶ Year 11 students are invited to a farewell assembly in the library on Thursday 22nd June from 4-5pm
- ▶ This is an opportunity to say goodbye to your teachers and peers, as not all will be attending the prom
- ▶ Mrs Starkey will be sending you via email a Microsoft form invitation to complete so we are aware of numbers
- ▶ Subject certificates and special awards will be presented during this event
- ▶ Light refreshments will be available

Year 11 Reminders

- ▶ It's not too late to purchase prom tickets - Payment in full by 2nd June.
- ▶ Please pay via ParentPay or see Jo on reception/Mrs Starkey if you have a problem with this
- ▶ Don't forget to order your Leavers Hoodies also by 2nd June via Superstitch our uniform supplier.



Pride Group - Change of time announcement

Room 26 - Mrs Willis
Tuesday lunchtime
All welcome



**WE ARE
PROUD**



**WE ARE
POSITIVE**

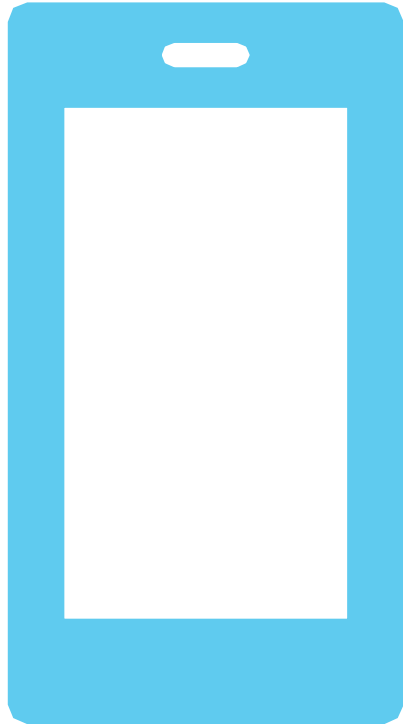


**WE ARE
KIND**



Daniel Quasar/Facebook

Mobile Phone Rules



- ▶ Mobile Phones should be 'on site - out of sight'
- ▶ This applies to lessons and breaktimes
- ▶ Mobile phones should be switched off and kept inside bags or coats - not on desks or in skirt/trouser pockets
- ▶ If you need to urgently contact someone at home, please go to Student Hub or reception and they will support you to do so
- ▶ If you are seen using a phone you will be asked to put it away
- ▶ If you continue to use it, the phone will be confiscated and you will be given a detention
- ▶ If you continually break the rules, you will be asked to hand it in to Student Hub at the start of every day, and collect it at the end

Food Tech Room

- ▶ This is out of bounds at break and lunchtime
- ▶ The only exception is if they have just had a lesson and are finishing off
- ▶ This is due to students treating it like a common room, taking ingredients etc
- ▶ Mr Werrett needs a break!



School Entrance/Exit



No Entry



**Students please
enter school
via the back gate**

- ▶ Students should only enter the school site via the back gate
- ▶ Only students with permission to do so, or students arriving at school after 9am (who need to be signed in) can enter school via reception.
- ▶ We also ask that students who are dropped to school by car in the morning are dropped off in the Freedom Leisure Centre car park, not the Rye College visitor and staff car park.
- ▶ The back gate should also be used for leaving school
- ▶ The only reason for leaving via reception is if you are being collected for an appointment during the school day

Admin Corridor through to Science



Please be respectful when using this corridor as people are trying to work



Please walk and keep noise levels low



The staff kitchen in this corridor is strictly out of bounds

Canteen Menu This Week

Find out what's on the Canteen Menu this week

A copy of the weekly menu can also be found [here](#) on our website.

WEEK 3 MENU
W/C: 01/05, 22/05, 12/06, 03/07, 24/07, 14/08, 04/09, 25/09, 16/10

FOOD UNION

	CHOICE One	CHOICE Two
MON	BBQ Beef Meatballs 🍷❤️ with Wholemeal Pasta, Pizza Pinwheel and Peas	Cauliflower Mac 'n' Cheese 🌱🍷❤️ with Pizza Pinwheel and Peas
TUE	Beef Lasagne 🍷❤️ Served with Pizza Pinwheel and Salad	Vegetarian Chilli 🌱🍷❤️ Served with Wholegrain Rice and Peas
WED	Roast Pork Served with Roast Potatoes, Vegetables and Gravy	Beetroot and Feta Burger 🌱 Served with Garlic and Herb Wedges and Apple Slaw
THUR	Chicken Shawarma 🍷 Served with Mexican Yellow Rice and Peas	Chinese Vegetable Noodles 🌱❤️ Served with Peas
FRI	Fish and Chips Served with Baked Beans and Peas	The Veggie Dog 🌱 Served with Chips, Baked Beans and Peas

WEEKLY SPECIAL
• Sweet Chilli Chicken Noodle Salad •
SALADS:
Tuna and Sweetcorn Pasta Salad
Pesto Pasta Salad 🍷❤️
SANDWICHES/BAGUETTES:
Ham & Cheese Sandwich
Chicken, Lettuce & Mayo Sandwich
Cheese Sandwich 🌱
Ham Baguette
Cheese & Tomato Baguette 🌱
WRAPS:
Tuna Crunch Wrap 🍷
Pepper and Houmous Wrap 🌱❤️
HOT DISHES:
Paninis
Pasta & Sauces
Freshly Baked Pizza
Love Joe's Mexican Burrito

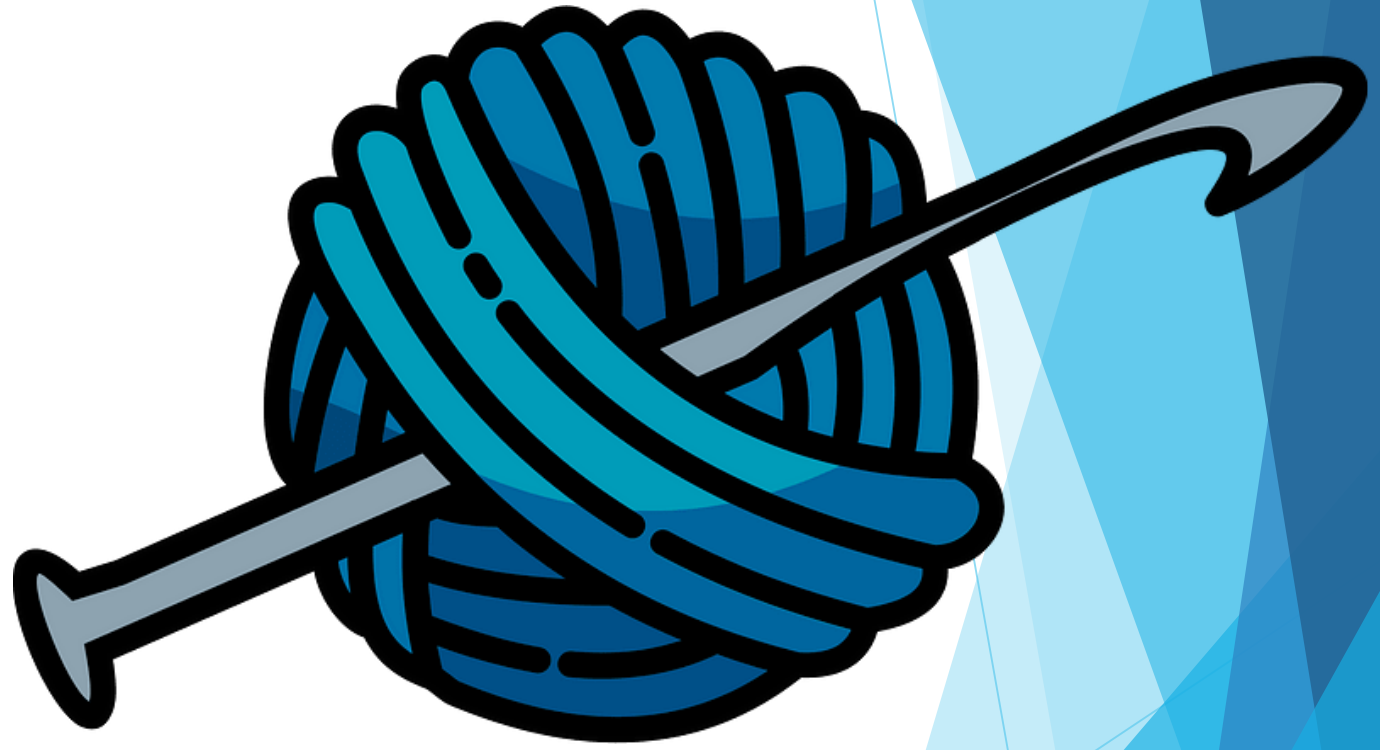
🍏 Fruity! ❤️ Nutritionist's Choice 🌱 Vegetarian 🐟 Oily fish 🍷 Wholegrain 🕸 Halal

Last day of term

- ▶ Friday is the last day of term 5
- ▶ This will be a non-uniform day
- ▶ We have not yet decided which charity to support
- ▶ Please have a quick discussion about any local charities you would like the proceeds from this term to go to
- ▶ Your Tutor will email Mrs Starkey your suggestions
- ▶ We return to school on Monday 5th June
- ▶ This will be week 1
- ▶ Have a great break

Crochet Club

- ▶ All years Welcome
- ▶ Room 4
- ▶ Wednesdays 3.20 - 4:00



Updated Rye College Fitness Suite Times:

Starting 24th April

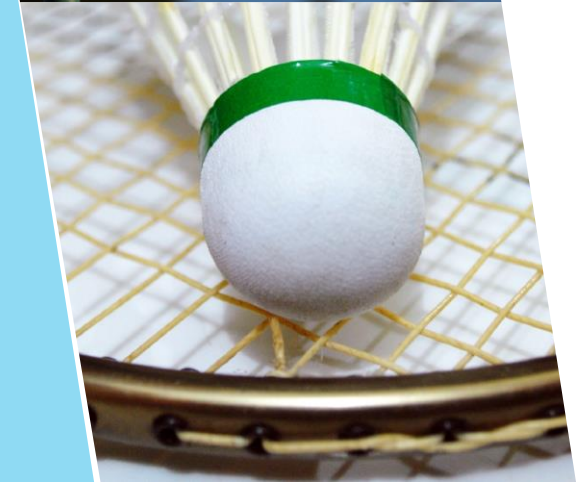


- ▶ **Morning 8:15 till 8:45am:**
- ▶ Monday: Year 9
- ▶ Tuesday: Year 10 & 11
- ▶ Wednesday: Year 7
- ▶ Thursday: Year 8

- ▶ **Afterschool 3:30 till 4:20pm:**
- ▶ Monday: Year 7 & 8
- ▶ Tuesday: Year 9
- ▶ Wednesday: Year 10 & 11

PE Clubs - Starting 24th April

- ▶ All after school clubs run from 3:30 to 4:20
- ▶ Tuesday: Optional Year 10 Sport Science Coursework Catch Up

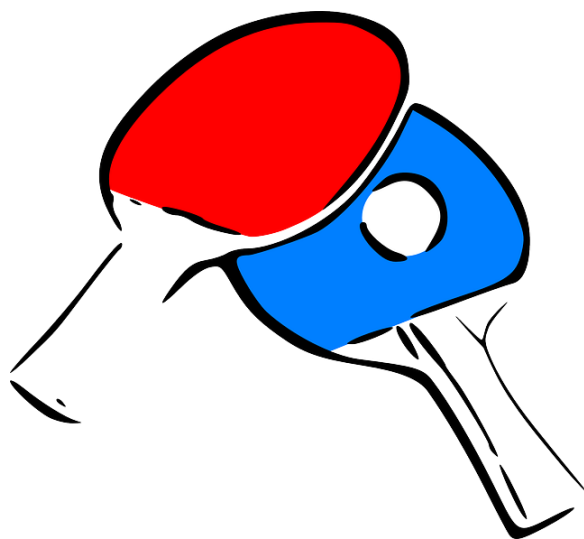


New! - Dance Club

- ▶ Year 7+8
- ▶ Wednesday lunchtime 1:50 - 2:15
- ▶ School uniform ok to wear (no shoes)
- ▶ Shorts to be worn under skirts
- ▶ Bring food if needed
- ▶ All welcome!



Table-Tennis Club



Rye College Table Tennis Club

Tuesdays

3.20pm to 4.30pm

School Gym

Beginners Welcome. Equipment Provided

Great Fun and Very Social

Fun and Games, improve your skills or learn new ones.

Challenge the Robot

Bring a Friend or Make New Ones

First 2 Sessions Free for Students

Sport not your thing? This might be just for you!

See PE Staff for Information or **Just Turn Up**

*Qualified Table Tennis England Coach in Attendance.



Tel 07803138881

www.tabletennisrother.co.uk

A Table Tennis England Premier Club & Sport England Club Mark Accredited

Geography Club

- ▶ Years 7 - 9
- ▶ Room 4
- ▶ Thursdays 3.20 - 4:00





Introducing - Comic Club!



New! - Comic Club:
All Comic enthusiasts
are welcome to join.

★ A new club for Comic lovers ★

Browse and read our growing selection
of graphics based novels & comics

★ Wednesdays - Library - 1st Break ★

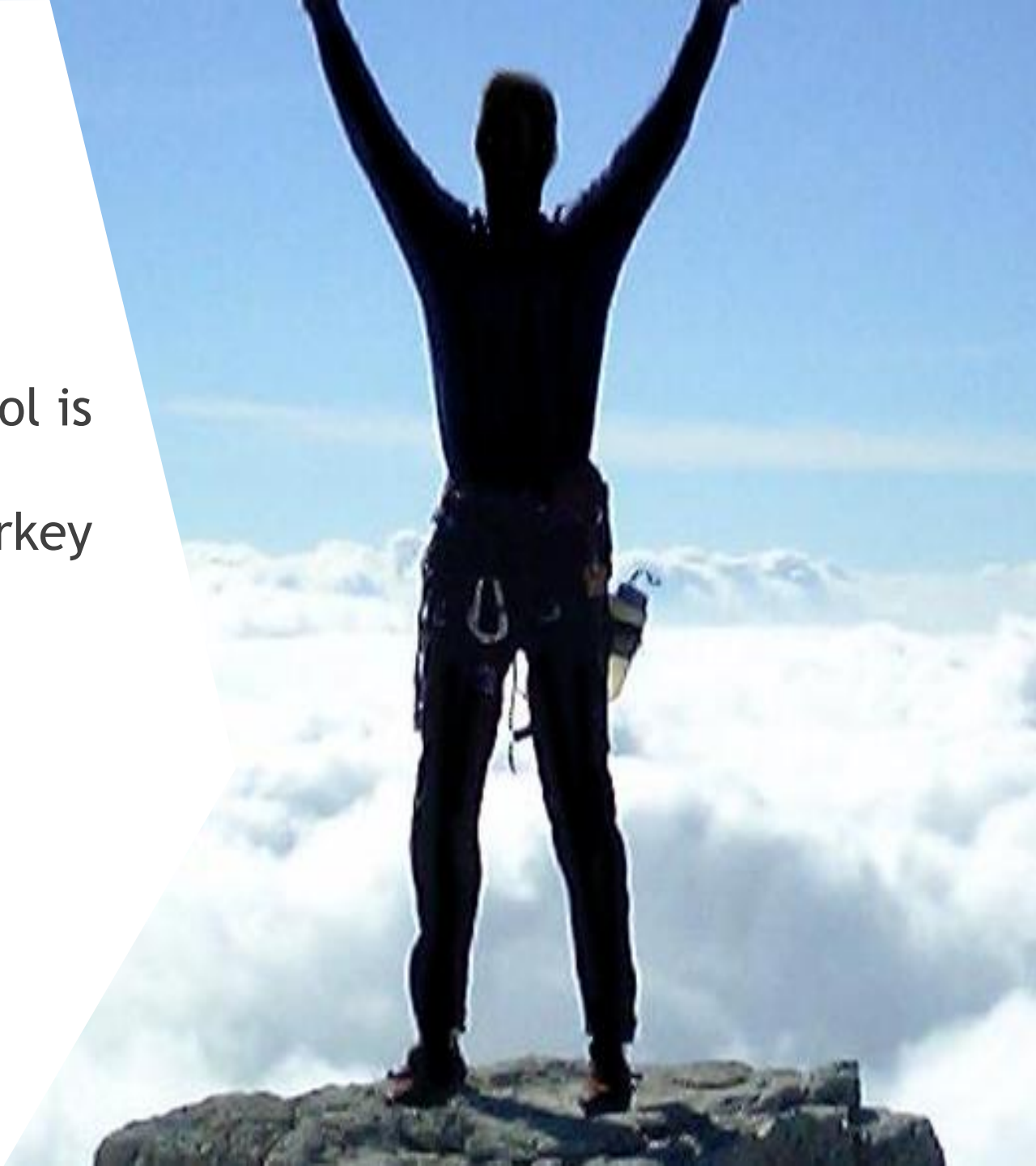
Science Club

- ▶ Continues after school on a Tuesday
- ▶ 3:20 to 4:00 in room 25
- ▶ The theme will be Marine Biology



Sharing achievements

- ▶ If you, or someone you know in school is proud of something they have done outside of school, please let Mrs Starkey know
- ▶ We would love to include this in our bulletin and put on our website and social media pages



Staying Safe



STUDENT SAFEGUARDING & SUPPORT

Rye College is committed to **'Create Bright Futures for All'**.

Safeguarding is what we do to promote your safety and protect you from harm.



Our Safeguarding Team

We encourage all students to use this support network. You can also email any queries to: yourconcern@ryecollege.co.uk



Miss Carpenter
Designated Safeguarding Lead (DSL)
Ejcarpenter@ryecollege.co.uk
Location: Rye College



Mrs Gull
Assistant DSL
E.gull@ryecollege.co.uk
Location: Student Hub



Mr Downes
Assistant DSL
E.dowdes@ryecollege.co.uk
Location: Rye College



Mrs Mills
Assistant DSL
E.mills@ryecollege.co.uk
Location: School Office



Mrs Holmes
Assistant DSL
E.holmes@ryecollege.co.uk
Location: Student Hub



Mr Francis
Assistant DSL
E.francis@ryecollege.co.uk
Location: Rye College

External Contacts and Support Groups

There is a wide range of external support for you to access confidential help and support:

	The UK's leading children's mental health charity providing in-school support and expert training to help improve the emotional wellbeing of pupils, families, teachers and school staff. Our Place2Be School Project Manager is Inga Springell.	ispringell@ryecollege.co.uk place2be@ryecollege.co.uk 020 7923 5500 Text: 85258
	Childline is a free service that offers direct support for young people, information to help you deal with bullying, drugs and alcohol, family relationships, questions around sexual relationships, personal feelings, and school life.	0800 1111 (9am - 3:30pm) 1-1 Counsellor Chat Service (9am - 10:30pm) www.childline.org.uk
	The National Society for the Prevention of Cruelty to Children help to prevent child abuse, helps to rebuild children's lives and support families.	0800 1111 for children (Childline's 24-hour helpline) www.nspcc.org.uk
	Shout 85258 is a free, confidential, 24/7 text messaging support service for anyone who is struggling to cope. They help people who are anxious, stressed, depressed, suicidal or overwhelmed and who need immediate support.	Text SHOUT to 85258 Free, confidential support via text, available 24/7
	i-Rock is a local East Sussex charity who can offer you advice and support on emotional and mental wellbeing, jobs, education and housing.	0800 502020 info@ironewall.org.uk

New email address

If you are worried about a friend or your own safety you can now email

Yourconcern@ryecollege.co.uk

If you do not want to talk to a member of staff about it.

This is also for sensible suggestions / concerns you may have about the college environment or behaviour of fellow students.

This will be checked weekly, and your concerns will be responded to.

Tutor Time



	Monday	Tuesday	Wednesday	Thursday	Friday
Year 7	Bulletin	Theme of the week	Wellbeing	Assembly	Quiz/acknowledgements
Year 8	Bulletin	Theme of the week	Wellbeing	Assembly	Quiz/acknowledgements
Year 9	Bulletin	Theme of the week	Assembly	Wellbeing	Quiz/acknowledgements
Year 10	Bulletin	Assembly	Wellbeing	Theme of the week	Quiz/acknowledgements
Year 11	Bulletin	Intervention	Intervention	Intervention	Assembly

Attendance to Line-up and Tutor time is compulsory

- As soon as you get to your desk place your equipment on your desk
- Tutors will check uniform and equipment
- Take register
- Engage with set activity
- Recap Rye Values
- Dismissal

MUGA Rota



	Before School	Break 1	Break 2
Monday	Year 7	Year 8	Year 9
Tuesday	Year 7	Year 10	Year 7
Wednesday	Year 7	Year 11	Year 8
Thursday	Year 7	Year 9	Year 10
Friday	Year 7	Year 7	Year 11

Rules

Only the year group allocated on that day on the MUGA - NO EXCEPTIONS (so don't ask!)

No swearing

No eating / drinking

No slide tackles

Bring your own ball.

If rules are broken the Year group will lose their next MUGA slot

Rye College Values



**WE ARE
PROUD**



**WE ARE
POSITIVE**



**WE ARE
EMPLOYABLE**



**WE ARE
KIND**



**WE ARE
COMMITTED**

PROUD



At Rye College, we have a sense of pride in our work, ourselves and our community. We are mindful of the presentation of our work and the standards we present. We take pride in what we produce and pay attention to details.

Our Rye College Values

POSITIVE



At Rye College, we demonstrate a positive attitude to our learning, and relationships with others. We engage in our learning with a 'can-do' attitude. We embrace challenging and thought-provoking tasks.

Our Rye College Values

EMPLOYABLE



At Rye College, we develop and nurture diverse skills, talents and abilities that support our progress within and beyond the school. We grow ourselves so we can positively participate in our community and society as a whole.

Our Rye College Values

KIND



At Rye College, we show kindness and respect to all members of our community. We understand British values and act inclusively in our conduct. We celebrate what characteristics we share and those that make us different.

Our Rye College Values

COMMITTED



At Rye College, we possess an ambitious attitude towards our learning and academic progress. We strive towards fulfilling our potential, demonstrating an understanding of our own strengths and weaknesses.

Our Rye College Values