



Student Bulletin Monday 14th December

COVID Reminders

- ▶ Ensure your facemask is on before you leave your classroom
- ▶ You **MUST** wear facemasks in corridors and communal areas inside school buildings
- ▶ You **MUST** wear face masks in shops and on public transport (for the entire journey)
- ▶ Wash your hands frequently
- ▶ Sanitise your hands when you enter and leave the room
- ▶ Remain in the seating plan that has been set - This is **NOT** negotiable
- ▶ Socially distance (2 metres) wherever possible
- ▶ Avoid physical and intimate contact with other students
- ▶ Please report anyone failing to comply with COVID regulations to the Student Hub
- ▶ Please adhere to the COVID rules over the Christmas holidays - we would like you all back in school, safe and well on Tuesday 5th January
- ▶ Remember: Hands - Face - Space

BUT CAN I...?

(SPOILER ALERT: If it's indoors, probably not)

...invite friends to my house?

No, you can only meet indoors with others from your household or support bubble.

...go to a fast food restaurant/coffee shop?

If you'll be sitting inside you can only do this with other people from your own household or support bubble.

...go shopping with my friends?

Afraid not - shops count as being indoors and you shouldn't meet indoors with anyone you don't live with.

...go to the cinema or bowling?

You should only do these things with other people that you live with, or that are in your support bubble.

It's my birthday, can I have a party?

Not right now, but you could find other ways to celebrate. You could have a virtual celebration or meet (no more than six) for a socially distance birthday walk or bike ride. You need to find ways of replacing indoor activities with things you can do outdoors.

Year 11 1:1 interviews

- ▶ Year 11 interviews Tuesday and Wednesday with Nicola - Room 105.
- ▶ These are now for the final few students and those students who missed their first interview date.
- ▶ Form Tutors have list of names/times.
- ▶ Names displayed on door to 105
- ▶ Please do not be late.
- ▶ If possible, collect the next person from their lesson if they are not waiting outside.

Year 11 information



Application workshop: All year 11 students are welcome to drop-in to room 30 on Tuesday after school if they have any questions or would like any help with their college applications.



Mock exam seats: During this week your seat numbers will be displayed on the windows of the hall, visible from the area next to PE. Please familiarise yourself with these.



Mock exam procedures: If you have an exam first thing, do not go to registration. For every exam you are to go to the area outside the hall by PE and line up in your seating plan rows. You will then be asked to enter the hall row by row and will be registered inside



Emails: Please check your Outlook emails, particularly the 'Year of entry 2016' group. There will be an important information about exams and college applications in this group.

Year 10 and 11 RSHE (Relationships, Sex and Health Education)

- ▶ Lessons to take place on the Wednesday 16th December.
- ▶ Groupings as follows (in normal teaching rooms):
- ▶ **Year 10 - Wednesday 16th December period 1**
- ▶ 10M/Ma1 - JRI
- ▶ 10M/Ma2 - DST
- ▶ 10M/Ma3 - LBE
- ▶ 10M/Ma4 - PFR
- ▶ 10M/Ma4 - KMO
- ▶ **Year 11 - Wednesday 16th December period 2**
- ▶ 11E1/En1 - KMO
- ▶ 11E2/En2 - JRI
- ▶ 11S2/Sc1 - LBE
- ▶ 11S2/SC2 - PFR
- ▶ 11S2/Sc3 - DST

RYE SMART

RYE COLLEGE STUDENTS ARE TO...

STANDARDS

BE
PROUD

MINDSET

BE
POSITIVE

ATTRIBUTES

BE
EMPLOYABLE

RYE
COMMUNITY

BE
KIND

TEACHING &
LEARNING

BE
COMMITTED



CREATING BRIGHT FUTURES FOR ALL

Rye SMART weekly focus - Mindset

- ▶ Each week we will be having a weekly focus on one of the Rye SMART strands
- ▶ If you demonstrate excellent Rye SMART **mindset** you will receive a Mindset postcard
- ▶ Not sure what the Mindset strand is all about? Watch the video below (scroll down to **Mindset**):
- ▶ <https://ryecollege.co.uk/curriculum/ryesmart>

Equality and Diversity - Miss Halvey

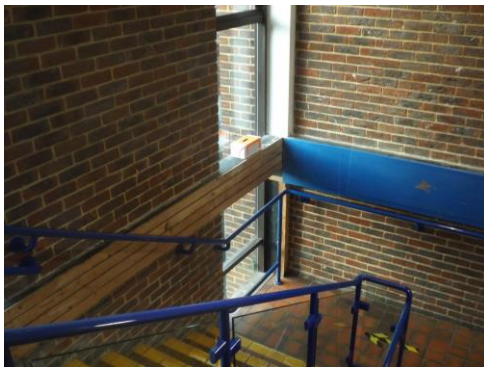
- Year 10 Equality, diversity and inclusion year 10 group will continue after half term as Miss Halvey is not in school.
- Think about the words you are using:
 - "Thats is gay"
 - "Man up"
 - "That's not ladylike"
- These are just some of the more 'PG' comments that I hear from some of your peers.
- Comments like these begin to force people to conform to gender stereotypes that DO NOT NEED to exist.
- Think before you speak.
- Do not judge others on their choices, their life is not up to you!
- Please discuss with your form tutor what your opinions are on the comments that you have heard.
- If you can't say anything nice; don't say anything at all - Be Kind!

Student Leadership Team

- ▶ The first task for the Student Leadership Team has been to create suggestion boxes. The purpose of these are for you to make suggestions/raise issues that you would like to put forward for discussion/action.



- ▶ Here are some photos of where you can find them:



Technology stairs



Reception



Student Hub



Christmas Jumper Day for Christmas Foodbank

- ▶ Please remember to bring in your donations for the Rye Foodbank by Wednesday
- ▶ Here is a reminder of what you can bring:
- ▶ Biscuits
- ▶ Stuffing
- ▶ Gravy
- ▶ Cranberry sauce
- ▶ Bread sauce
- ▶ Christmas pudding
- ▶ Rice/pasta
- ▶ Tins/jars eg tuna, sauces, jam, beans, custard, tomatoes, soup etc
- ▶ Try to avoid boxed goods (unless wrapped/sealed) due to storage/dampness issues

Christmas
JUMPER DAY





*Merry
Christmas!*