

# Can I compare the geography of Britain and Italy?

You are going to use your knowledge and understanding of the Romans and Italy to compare Italy to Britain.

You are challenged to think about the landscapes of both countries as well as their climates and populations.

*You may wish to write notes as you read.*

Do you know which map is of which place?

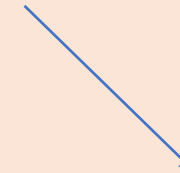


# Do you know which map is of which place?

If you said that this was Italy, you are correct!



If you said that this was Great Britain, you are correct!



Do you think you know whether these places are in Italy or Britain?





# Famous English landmark: Stonehenge



- Stonehenge stands majestic near Salisbury in the county of Wiltshire and began its long history in 3000BC and probably started as a burial ground. No one is really sure why Stonehenge was built but some historians believe that it may have been a site for burials, healing, ceremonies, or as a temple to the Sun.
- In around 2500BC, the familiar stone circle was created. The larger stones around the outside are called the Sarsen Stones, the largest of which weighs about 35 tonnes!
- The smaller stones in the centre came from Wales and are called the bluestones.

# Famous Italian landmark: Colosseum



- The Colosseum, also known as the Flavian Amphitheatre, was built between AD 70 and AD 80.
- It was used for gladiator fights, animal hunts and public executions.
- The floor of the Colosseum could be flooded in order to stage sea battles.
- Although some of the Colosseum was destroyed in the great earthquake in 1349, it remains a popular tourist attraction.

# The Highest Point in England: Scafell Pike



- It is the highest mountain in England, standing at 978m (3,209 ft.) above sea level, in the Lake District in Cumbria.
- Scafell Pike is an igneous rock formation, which was formed more than 450 million years ago.
- It takes about 2-3 hours to walk the quickest way to the summit via the Wasdale Head route, where you can then appreciate the spectacular 360 degree views.



# The Highest Point in Italy: Mont Blanc



- Mont Blanc is the highest peak in the north of Italy and measures 4807m high, rising 4,808m above sea level.
- Mont Blanc is a sedimentary rock formation, which was formed about 15 million years ago.
- It takes about 3 days to climb. The first day (3-4 hours). The second day (8-10 hours). Then the third day for the descent back (4-6 hours).
- It was first ascended in 1786.

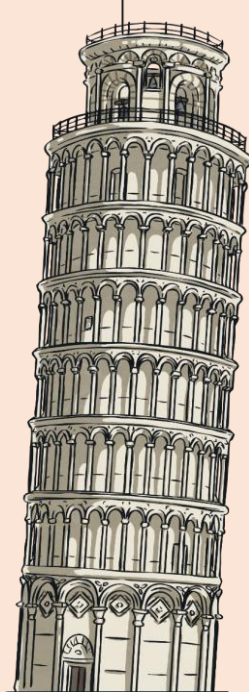


# Famous English Building: Tower of London



- The Tower of London is a historic castle in central London. Its official name is Her Majesty's Royal Palace and Fortress of the Tower of London.
- William the Conqueror built the White Tower in 1078.
- The tower was used as a prison for many years and also houses the crown jewels.

# Famous Italian Building: Leaning Tower of Pisa



- The Leaning Tower of Pisa is the freestanding bell tower for Pisa Cathedral in Pisa. Its official name is Torre di Pisa in Italian.
- Building of the Leaning Tower of Pisa first began in 1173. The tower was not completed until 1372.
- It is one of four buildings that make up the cathedral complex or 'Piazza dei Miracoli', which means 'Square of Miracles'.
- Due to the angle it stands at, the Leaning Tower of Pisa is about 55.9 metres tall on the lower side and about 56.7 metres tall on the higher side.

# Culture

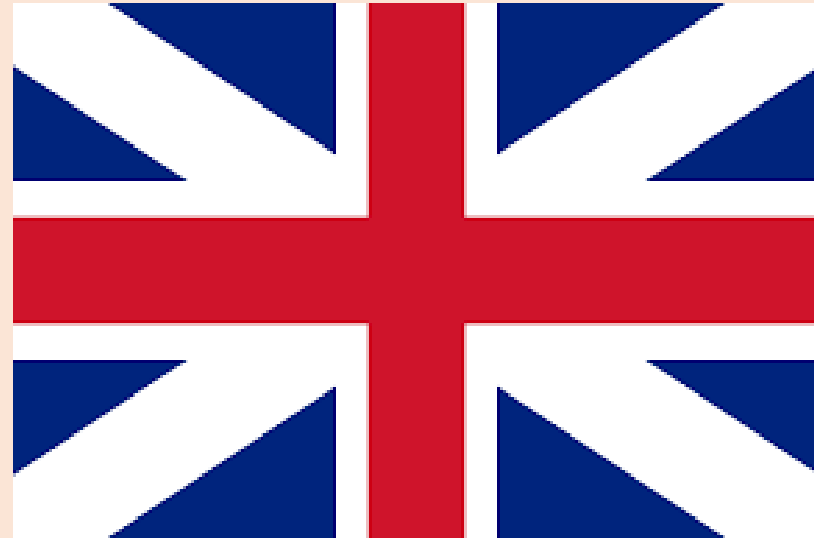
## Italy

- Population: 60 million
- Major Religion: Christianity
- Capital City: Rome



## Britain

- Population: 66.5 million
- Major Religion: Christianity
- Capital City: London



# Climate

## Italy

- Italy is a hot summer holiday destination.
- There are popular ski resorts in the mountainous regions in the North of Italy.
- Central Italy has a milder climate with similar temperatures all year round.
- Southern Italy has very hot, dry summers and mild winters.



## Britain

- Britain has warm summers and cool winters. Summers are cooler than others in Europe but winters are milder.
- July and August are the warmest months.
- January and February are the coldest months.
- The west of Britain is the wettest.
- It rains throughout the year.





Now go back through your notes, or look back through the powerpoint. You will need to write a comparison between Britain and Italy.

How are these places the same?

How are these places different?

Use either the venn diagram or design a poster to show the comparison between Britain and Italy.

