

Can I tell the time to the
hour and half hour?

Year 3/4 Thursday 11th February 2021

Alternative provision.

Watch the video

- <https://vimeo.com/434770979>
- Now complete the questions on the next slides

O'clock and half past

1 Match the clocks to the times.



7 o'clock



3 o'clock



12 o'clock



10 o'clock

Complete the sentence.

At o'clock, the minute hand points to

2 Match the clocks to the times.



half past 4



half past 1



half past 9



half past 6

Complete the sentence.

At half past, the minute hand points to

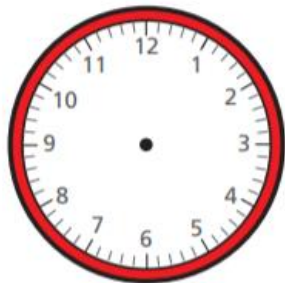
- 3 Write the time shown on each clock.
Use the word bank to help you.

o'clock

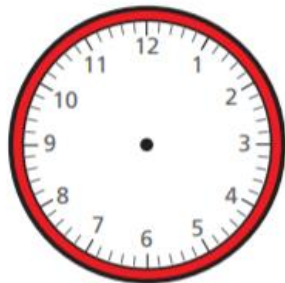
half past



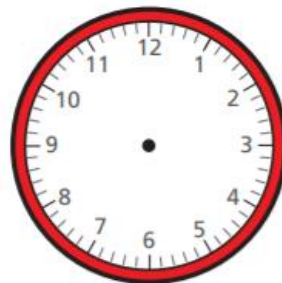
- 4 Draw hands to show the time on each clock.



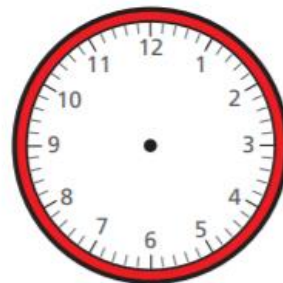
half past 11



half past 3



4 o'clock



1 o'clock

- 5 Circle to show whether each sentence is true or false.

a) The clock shows 6 o'clock.

true

false



b) The clock shows half past 10

true

false



c) The clock shows half past 12

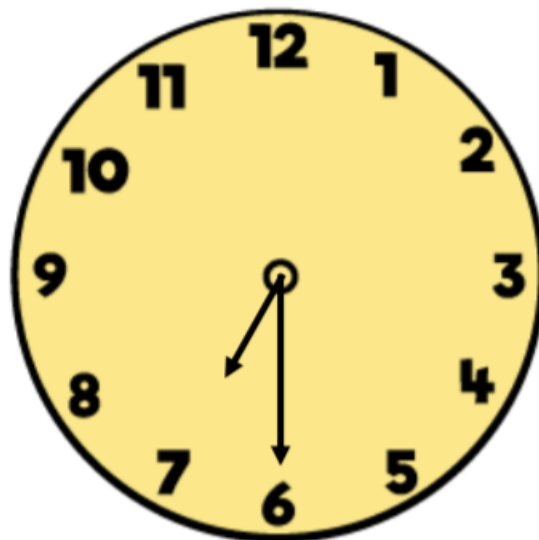
true

false



Compare answers with a partner.

The clock shows half past 7



ANSWER sheets

- Please check your answers using the answer sheets on the next slide.
- If you have made a mistake, can you explain what you did wrong and what you should have done instead?

O'clock and half past

1 Match the clocks to the times.



7 o'clock



3 o'clock



12 o'clock



10 o'clock

Complete the sentence.

At o'clock, the minute hand points to

12

2 Match the clocks to the times.



half past 4



half past 1



half past 9



half past 6

Complete the sentence.

At half past, the minute hand points to

6

- 3 Write the time shown on each clock.
Use the word bank to help you.

o'clock

half past



2 o'clock



half past 8



half past 5



9 o'clock

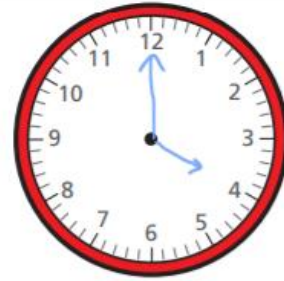
- 4 Draw hands to show the time on each clock.



half past 11



half past 3



4 o'clock



1 o'clock

- 5 Circle to show whether each sentence is true or false.

- a) The clock shows 6 o'clock.

true

false



- b) The clock shows half past 10

true

false



- c) The clock shows half past 12

true

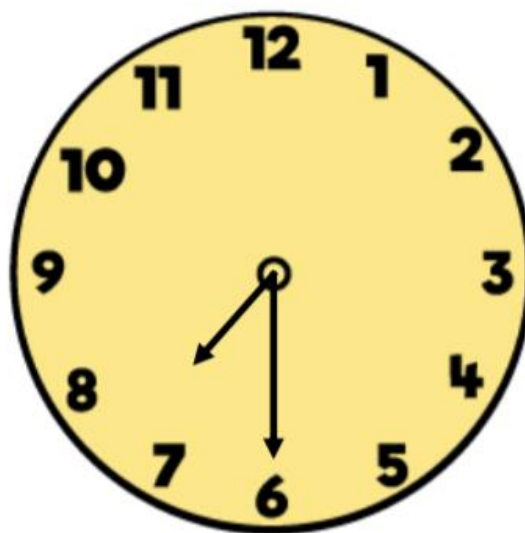
false



Compare answers with a partner.

False

If it is half past 7 the hour hand should be half way between 7 and 8



Did you get it right?