

Can I tell the time to the
half hour?
(recap)



Half past

Year 3/4 Tuesday 23rd February 2021
Alternative provision.

Watch the video

- <https://vimeo.com/436533915>
- Now complete the questions on the next slides
- Date your work for me please and if you did the work on your own with no help write an **I** at the top and if you had help please write **AS** at the top
- Don't forget to write your answers including your working out.

Time to the half hour

1 Match the clocks to the times.



half past 7



half past 10



half past 1



half past 4

2 Match the clocks to the times.



8 o'clock



half past 8



half past 3

3 Tick the time that matches the clock.



6 o'clock

half past 6



6 o'clock

half past 12

4 Complete the pattern.



What time comes next?

The clock shows half past 6



ANSWER sheets

- Please check your answers using the answer sheets on the next slide.
- If you have made a mistake, can you explain what you did wrong and what you should have done instead?

Time to the half hour

1 Match the clocks to the times.



half past 7



half past 10



half past 1

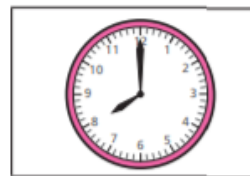


half past 4

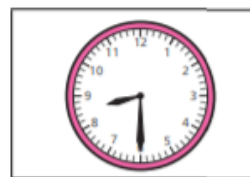
2 Match the clocks to the times.



8 o'clock



half past 8



half past 3

3 Tick the time that matches the clock.



6 o'clock

half past 6



6 o'clock

half past 12

4 Complete the pattern.



What time comes next?

False



The first clock shows half past 5 because the hour hand is half way between 5 and 6

The second clock shows half past 6