



# RYE COMMUNITY PRIMARY SCHOOL

## NEWSLETTER TERM FIVE



Just in case you missed it....

### Ofsted rates Rye Primary a 'Good' school!

We are beyond proud to be able to share with you (once again :-)) that ... **"Ofsted rates Rye Primary a 'Good' school!"** Following Ofsted's inspection visit in March 2023 we have been rated **'Good' in ALL categories**. Given the significance of this outcome for the whole community, we have highlighted some of the report which we feel captures our school so well.

Ofsted recognised **"a strong culture of safeguarding"** and observed that **"pupils are happy"** with **"warm and supportive relationships throughout the school"**.

We are delighted that Inspectors recognised how **"leaders know pupils well"** and as a result **"pupils feel safe at this school, and all confidently name adults they would speak to if they had concerns or worries."**

Inspectors feel **"pupils behave well around the school and in lessons."**

The report also commends **"staff who are confident and knowledgeable"** and **"have high ambitions for their pupils and what they can contribute to their school"**.

I am delighted our ambition for all pupils through a high-quality curriculum has also been recognised by inspectors. Everyone works so hard to ensure pupils are happy and experience exceptional relationships with our staff. We are very proud of our approach to education and thrilled that inspectors feel the same way!

Miss Martin , Headteacher

### **Mrs Kathy Griffiths, Chief Executive of Aquinas, said:**

*"This is a much-deserved inspection outcome for this fantastic school. Everyone has worked tremendously hard to ensure all children get a good education despite the obvious challenges of recent years. Families can be confident about sending their children to this school and delighted with the significant progress made since the last inspection."*

Rye Primary joined Aquinas in November 2018 having previously being graded 'inadequate'. This is the second academy in the trust to improve their Ofsted grading in such a way after Rye College was also found to be a "Good" school in January 2023.



# STARFISH



This term the children have been learning about the woods and the animals that live there. We have been creating woodland animals and making animal footprints. We are very excited about our trip visit to Hamstreet woods. Also, we have been learning how to plant a seed and enjoyed a visit to the allotment. In Forest School we have been collecting leaves to make leaf rubbings and listening to noises in nature. We also enjoyed celebrating the coronation and made beautiful crowns!

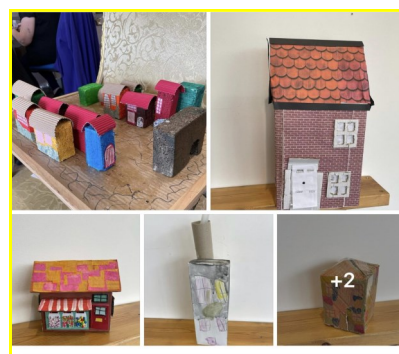


# MINNOWS



A highlight for Minnows class this term has been our trip to the library. Henry the librarian was fantastic at bringing stories to life. Many children were able to borrow books to take home and share.

Last term Minnows visited the Rye Town Model and over the Easter break children made their own models. These are proudly on display at The Heritage Centre for all to see. Minnows- if you visit the centre to collect your model you and your family will be able to receive a discount into the show!





# CLOWNFISH



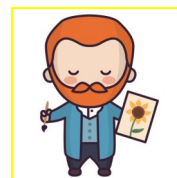
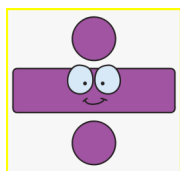
This term Clownfish have enjoyed the topic 'Ready, Steady, Grow'. The children have enjoyed planting various seeds and have kept a weekly bean diary.

The story focus was 'Jack and the Jelly Beanstalk' and the children went on to create their own versions of the book.

In math's we have been looking at division and have just started the unit on fractions. We have been focusing on halves and quarters.

Clownfish have enjoyed looking at paintings by Vincent Van Gogh and have been concentrating on colour mixing and brush techniques. We will soon be creating our own versions of a Vincent Van Gogh picture.

We have been busily practicing for next terms Phonics Screening and the children have loved spotting the digraphs and trigraphs within the alien words.



# SEAHORSES



In Seahorses we have had a very busy term learning about the world around us. We have identified and named the seven continents and five oceans and have found out about different countries. Countries that are close to the equator are very hot and countries that are far away from the equator are very cold.

We have also been learning about plants and what they need to stay healthy. We set up an experiment and have different plants growing one without water, one without light, one in a colder temperature and one without soil. We have noticed they are all growing differently and think that water is the most important thing that they need.





# SEA TURTLES

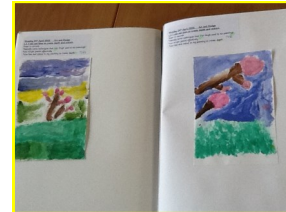


. Sea Turtles are thoroughly enjoying their, 'Ready, Steady Grow' topic. In English, we have been reading 'Jack and the Jelly Bean Stalk', by Rachael Mortimer. They have written some imaginative stories about Jack and the Beanstalk.

In Science, we have been learning about plants. Sea Turtles have grown their own pea plant and kept a weekly diary on how the plant has grown.

In Art and Design, Sea Turtles have been learning about Van Gogh. They have been creating their own interpretations of his famous, 'Sunflower', painting and other pieces of his artwork.

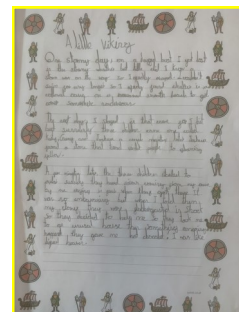
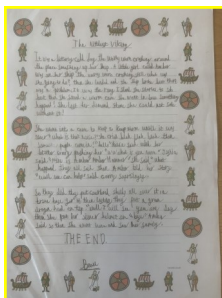
In Geography, we have been comparing the similarities and differences between living in London UK with living in Quito in Ecuador.



# CUTTLEFISH



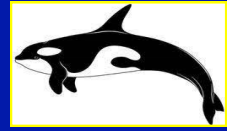
In Cuttlefish this term we have been learning all about the Vicious Vikings! We have written about the adventures of Amber, 'The Littlest Viking', who got lost at sea and washed up onto the shores of Pegwell Bay where she was befriended by three local children. We have made Viking brooches out of clay and we are now learning all about the Gokstad Longship which was discovered just outside of Oslo in 1890. We look forward to telling you more about this at our sharing assembly on 26th May.



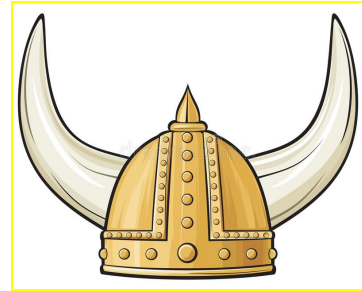
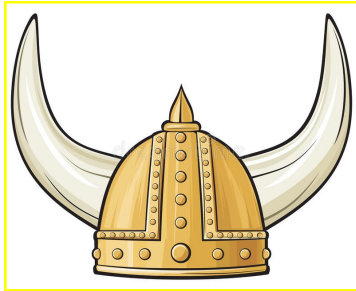




# ORCAS



As part of our Experience Day and our study of the Vikings, Orcas class designed and created their own Viking brooch. These brooches were used by the Vikings to fasten their clothes together as there were no zips in this time period. The children moulded their clay into the shape of a brooch, added their own design and then used metallic paint to create the dazzling effect!

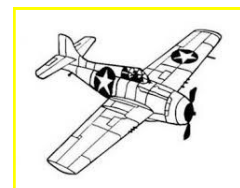
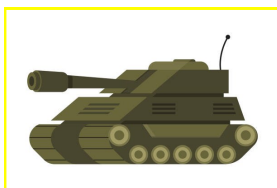


# MARLIN



This term we have been learning about WW2. We began by looking at the outbreak of the war looking at the key events and dates. We then looked closely at the blitz, evacuation, rationing and the role women played in the war. We learnt about the importance of the Anderson shelters and designed and build our own.

We have been reading the book, Letters from the Lighthouse, for our book talk. This has led us on a journey with two young children who are evacuated from London.

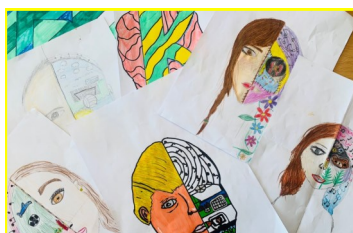




# DOLPHINS



The Dolphins have worked unbelievably hard in preparation for their SATs this week, and have made us so proud. At the beginning of the term, we kicked it off with a bang by winning the Aquinas Science Quiz against all other schools in our Trust! Following this, we've been looking at WW2 from different perspectives, in between a lot of Maths and English revision lessons! After each test this week, we have completed our Leavers art activity, made fresh pizza, created phone charms and bracelets as well as a movie afternoon. A very well-deserved treat for our hard-working Year 6s.



## Coronation Celebrations!

What an amazing Coronation afternoon! Our whole school came together to put on a royal spectacle fit for a king! From a yummy picnic lunch to face painting to crown making to royal dress up, races and games and disco tunes! Thank you to our wonderful PTA for the enormous amount of work that went into making this such a special coronation occasion for our children to remember!





# Attendance News



Whole school attendance currently stands at 92.7%, please see the table below for your child's class attendance and the number of late marks their class has received so far this academic year. Our attendance target is 97%.

	Present R/C	Auth. Absent R/C	Unauth. Absent R/C	Late R/C
Student Group	Marks ↓	Marks	Marks	Marks
Dolphins	94.19%	4.37%	1.44%	106
Marlin	94.02%	4.08%	1.91%	87
Seahorses	93.41%	4.3%	2.29%	71
Orcas	93.18%	3.91%	2.92%	114
Sea Turtle	92.71%	4.55%	2.74%	104
Cuttlefish	92.52%	5.48%	1.99%	104
Clown Fish	90.37%	6.94%	2.69%	193
Minnows	90.05%	8.61%	1.34%	160

## Home Visits

As part of our drive to improve attendance and support our families we regularly carrying out unannounced home visits, this may happen for a number of reasons, such as:

- Child is a persistent absentee (attendance below 90%)
- Child is frequently absent and reasons are not provided for absence
- School has not been able to make contact with parents
- Child has been absent for a significant amount of time and sufficient medical evidence has not been provided.
- Child has a higher than the national average amount of unauthorised absence.
- Child is refusing to come to school and parents are in need of additional support.
- We are aware of other concerns relating to the family.



As you will be aware, this year we have been sending **RAG**-rated attendance letters for your child (ren), each term. If your child's attendance is below 95% we would like to be able to work with you and your child to support you and see this improve, before we issue the next **RAG**-rated letter at the end of Term 6.

We do have various support measures to help; so if you would like some advice please speak to Miss Martin or Mrs Homewood on the school gate, in the morning, or call into the school office and speak to Mrs James or Mrs Cruttenden. We also have the support of Kate Ates our EWO (Education Welfare Officer), who is working with us and other local schools, throughout this year. She has been making contact and meeting with parents when attendance becomes a concern.

We want the best for all our children and to help them succeed; for us to be able to do this, children need to be attending school everyday, unless they are too unwell to do so.

Regular attendance ensures children to keep up in lessons, understand and retain the subject knowledge they are being taught. Children will good attendance also form and maintain strong friendship groups.

Please help us to help your child Dream, Believe and Achieve.




# BARN DANCE

led by the 'Catsfield Steamers'

**Friday 2nd June 7-10pm**  
**Beckley Village Centre**  
**Main Street, Beckley TN31 6RL**

Pre-booked tickets collected on the door:  
 £12 per adult  
 £25 per family of 4

★ Ticket includes Ploughman's Supper ★  
 Licensed bar - Raffle - Free parking

**All enquiries & bookings:**  
**Jenny Farrant 01797 260321**  
**[jfarmworldknelle@gmail.com](mailto:jfarmworldknelle@gmail.com)**



Chichester Diocesan Association for Family Support Work | Charity No 285537 | Company Limited by Guarantee  
 Registered No 1648905 | Registered Office: Carlton House, 22 Stanford Avenue, Brighton BN1 6AA

## FOREST SCHOOL

PARENTS AND KIDS  
 WELCOME TOGETHER

WEEKLY SESSIONS @  
 RYE PRIMARY  
 COMMUNITY SCHOOL

MONDAYS 3-5PM  
 STARTING 19TH  
 JUNE FOR 4  
 WEEKS

JOIN US FOR SOME  
 FAMILY FUN  
 OUTDOORS!

TO BOOK PLEASE EMAIL  
[FRANTRAININGSUSSEX@GMAIL.COM](mailto:FRANTRAININGSUSSEX@GMAIL.COM)  
 OR CALL 07814448478!



## Polite Reminder

May we please remind you that school ends at 3pm and it is your responsibility to collect your children at this time. We have had an increasing number of parents arriving late. This causes huge inconvenience as there are times when all staff are in a meeting and has resulted in staff members having to stay after their work hours to watch children who haven't been collected and this has an effect on their own after school commitments.





Friday 26th May: Last Day of Term

Monday 29th May– Friday 2nd June: Half Term Holiday

Monday 5th June: Start of Term 6

Monday 12th– Thursday 15th June: Sarah Prescott Photographer, class and individual photos

Tuesday 27th June– EYFS Sports Day

Wednesday 28th June– KS1 Sports Day

Thursday 29th June– KS2 Sports Day

Thursday 6th and Friday 7th July: Y6 transition days to Rye College

w/c Monday 10th July– Y6 Bikeability

Monday 10th July - Wednesday 12th July—Yr6 Residential

Wednesday 19th July: Last Day of Term, **School Closes at 1.30pm**

Thursday 20th July: Inset Day (school closed to children)

Friday 21st July: Inset Day (school closed to children)

Monday 24th July: Summer Holiday Begins



**See you all back in school on**  
**Monday 5th June**