

Tuesday 9th February

Learning Intentions:

3 and 4: I can use imperative verbs.

5 and 6: I can use modal verbs to indicate possibility.



For the last week of term, we are going to focus on our grammar skills.

Grammar Week!

- **Tuesday** - verbs
- **Wednesday** – adverbs
- **Thursday** – expanded noun phrases
- **Friday** – comprehension

Starter:

Click on the link below to sort the words into **verbs**, **adjectives** or **nouns**.

[Word types \(bigbrownbear.co.uk\)](http://bigbrownbear.co.uk)

Remember: a verb is an action.

Adjectives are describing words.

Nouns can be people, places, animals or 'things'.

Choose the level that is right for you.

MODAL VERBS

Modal verbs are verbs which cannot usually work alone.

They are used with a main verb.

These are **modal verbs**:

might

will

should

may

would

can

could

must

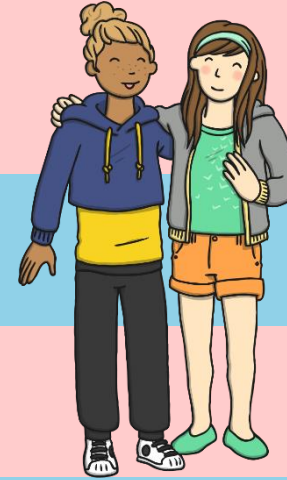
shall

ought to

Modal verbs make questions by inversion.

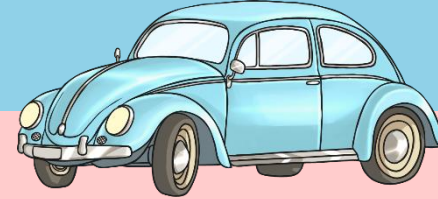
She **can** go out.

Can she go out?



We **could** drive there.

Could we drive there?



Children **should** eat fruit.

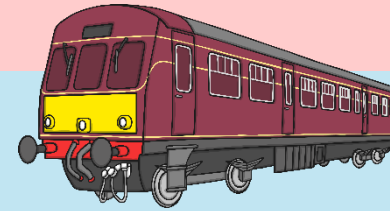
Should children eat fruit?



Modal verbs can be used to show how possible something is, or how likely it is to happen/have happened.

For example:

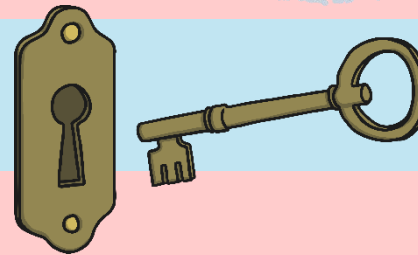
He's very late. He **could have missed** the train.



It's snowing so it **must be** very cold outside.



They **will lock** the windows when they go out.



Can you spot the **Modal verbs** used to show **possibility** in these sentences?

Mum **might** take us swimming after school.



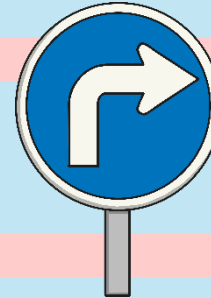
You **could** eat a banana instead of those sweets.



“Hurry up! We **will** be late!” said Dad

Hurry up!

We **can** go the other way – it’s quicker.



You **ought** to go to bed earlier.



Which **Modal verbs** are missing from these sentences?

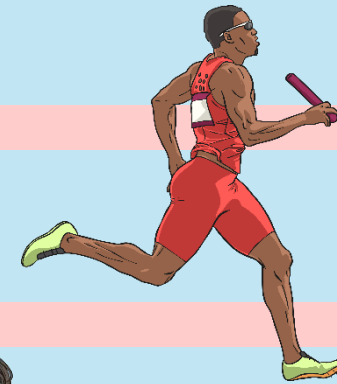
You **must** be hot in that thick coat.



If it's dry, **shall** we play outside?



He's so fast, he **should** win the race.



I'm fed up with my long hair. I **might** have it cut.



Did you choose these **modal verbs**?

Which others could you have used?

Modal verbs can also be used to show:

advice or obligation

Pupils **must** wear a uniform.

You **should** not smoke.



habits

I **will** often have cereal for my breakfast.

We **shall** always enjoy a walk in the park.



permission

May I leave a few minutes early?

Could we go to the post box on the way?

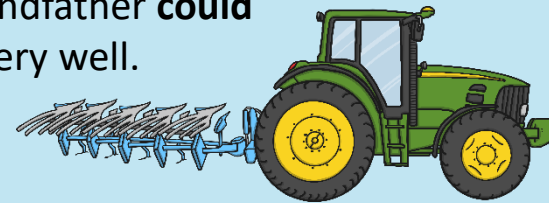
Please can we have an ice cream?



ability

I **can** drive a tractor.

My grandfather **could** draw very well.



Task 1:

- Create a poster and split it into 4 parts. You can add a different section to it each day as we cover the 4 different **grammar topics**.
- For today, give examples of what a **modal verb** is, how it can be used in a sentence and different types.

Task 2:

- Choose the level of activity on **modal verbs** which is right for **you**.
- You do not need to print the task out – you can write out the answers into your book/on paper.