



Sacred Heart Catholic Primary School

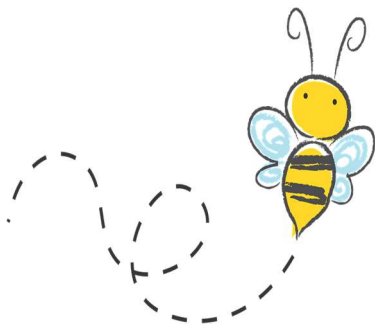
Newsletter

Friday 13th March 2026

Dates to Remember

- Friday 20th March – Year 2 Worship Assembly and coffee morning for parents
- Friday 20th March – Year 4 and Year 5 trip to Manchester Museum
- Tuesday 24th and Wednesday 25th March – Year 6 Residential to Winmarleigh Hall
- Friday 27th March – School closes for the Easter holidays at 3.15pm
- Monday 13th April – Children return to school
- Friday 24th April – Reception class trip to Worden Park

Bee Promises



This week we received 40 nominations of children displaying behaviours linked to our Bee Promises of Bee Responsible, Bee Respectful and Bee Kind.

Well done to all children nominated and congratulations to the winners of each Bee Promise Award!

Bee Responsible – Blen (Year 5)

Bee Respectful – Shaun (Year 5)

Bee Kind – Vimashee (Year 3)



Year 6 Residential



The Year 6 Residential to Winmarleigh Hall on Tuesday 24th March is fast approaching. We would like to remind all parents/carers the trip is available to pay either by cash at the school office or on ParentPay.

We recommend making small regular payments to chip away at the full cost of the trip as this must be paid in full by the time your child leaves Sacred Heart in July 2026.

If you do not have access to ParentPay or have any concerns, please call the school office on 01772 726937 where we will be happy to help.



Well done to the Tag Rugby team who won both matches on Thursday night, securing winning the league.



Little Zoo Visit



Yesterday KS1 enjoyed a visit from the 'Little Zoo to You' company. The children absolutely loved seeing and learning all about the wonderful animals such as guinea pigs, turtles, snakes, and giant African land snails which the children are enjoying in the picture.

Upcoming Trips

If your child's class has an upcoming trip, this is available for payment on ParentPay or by cash in the school office.

We would really appreciate your support with school trip payments so we can ensure the trips go ahead.



This is just a polite reminder that we are a **nut free** school.

Please do not send your child to school with any snack/packed lunch items that contain nuts.

Cupboard Love food hubs



The next food hub will take place on Saturday 21st March from 9:30am to 10:30am at the back of St Michael's Church (Egerton Road entrance).

We provide a selection of fresh fruit and vegetables, some fresh and/or frozen ready meals, bread, cereal and store cupboard basics for a minimum donation of £1.

Family Feast Fridays

Each Friday we will be sharing a recipe idea for the week ahead to help us all with new ideas for meals each week! We would love to hear if you have tried them out- please send us pictures!! And if you have any recipes you would like to share with us, please send them to bursar@sacredheart.mecmat.org

This week we wanted to share: **A yummy school cake recipe from BBC Good Food**



Ingredients

200g/7oz butter
softened, plus extra for the tin
200g/7oz caster sugar
4 large eggs
200g/7oz self-raising flour
50ml/2fl oz milk
2 tsp vanilla extract
200g/7oz icing sugar
coloured sprinkles

Method

step 1

Heat the oven to 180C/160C fan/gas 4. Butter a 20 x 30cm cake tin and line with baking parchment. Put the butter and sugar in a large bowl and beat with an electric whisk for a few minutes until pale and fluffy. Add the eggs, flour, milk and vanilla and beat again until you have a smooth batter.

step 2

Scrape the batter into the prepared tin, spread right to the corners and smooth the surface. Bake for 40-45 mins or until a skewer inserted into the centre comes out clean, checking at 5 min intervals if it isn't ready after 45 mins. Leave the sponge to cool on a wire rack.

step 3

Mix the icing sugar with enough water to make a thick icing. Spread the icing over the cooled cake, then top with lots of sprinkles – the surface should be almost completely covered. Leave for at least 1 hr to set. Cut into squares and serve with hot custard, if you like.

Attendance and Punctuality

	Reception	Year 1	Year 2	Year 3	Year 4	Year 5	Year 6
Attendance	95.79%	92.21%	100%	95.91%	100%	98.21%	93.75%
Punctuality	1 Late	3 Late	1 Late	2 Late	2 Late	0 Late	3 Late