

Omega Multi-Academy Trust

GOVERNANCE STRUCTURE



STATEMENT OF INTENT

Our Governance structure ensures there are clear reporting lines and explicit requirements to ensure integrity, good governance and strong performance.

Members are responsible for determining the governance of the Trust. They approve our Articles of Association, as agreed with the Department for Education which sets out the details for our internal management, decision making and running of the Trust. The Members also appoint Trustees in accordance with the Articles of Association.

Trustees focus on four core functions of governance:

- Ensuring clarity of vision, ethos and strategic direction
- Holding executive leaders to account for the educational performance of our schools and their pupils, and the performance management of staff
- Overseeing and ensuring effective financial performance
- Managing strategic risk

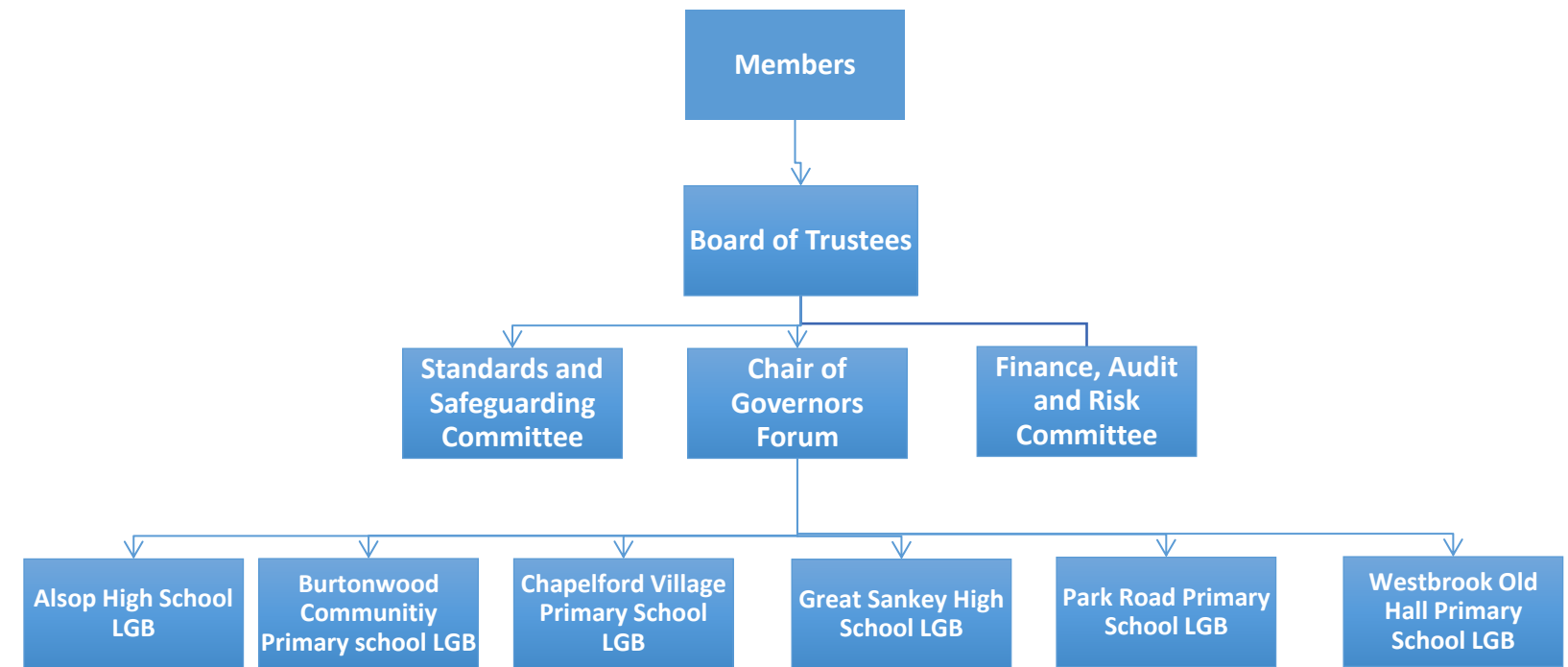
Trustees meet as a Board of Trustees, as well as through two key sub-committees; the Finance, Audit and Risk Committee and also as a Standards & Safeguarding Committee.

Each school has a Local Governing Body (LGB) and local governors serve as a key link between the schools, parents/carers and the local community. They monitor the performance of the school, advising the Trustees of any concerns.

All Members, Trustees and Governors complete an annual declaration of business interests and declare any pecuniary interests within meetings.

Our Scheme of Delegation identifies the key decision-making roles for establishments within Omega Multi-Academy Trust. It determines the functions undertaken by the Board of Trustees and which have been delegated to its committees, the Chief Executive Officer/Central Executive Team, Local Governing Bodies and the Headteachers of individual schools.

STRUCTURE



KEY GOVERNANCE DOCUMENTS



[Trust Board Scheme of Delegation](#)



[Finance, Audit & Risk Terms of Reference](#)



[Local Governing Body Terms of Reference](#)