

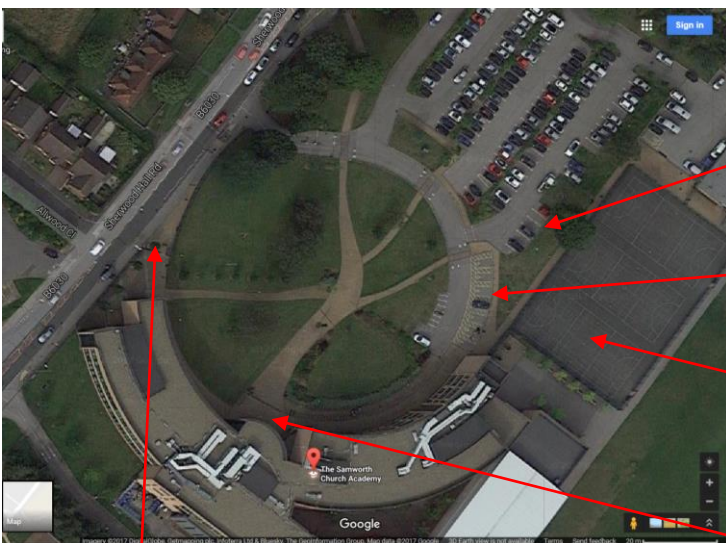
How to find us

The Samworth Church Academy
 Sherwood Hall Road
 Mansfield
 Nottinghamshire
 NG18 2DY



From Mansfield (approx. 8 minutes):

1. From the A60 take the B6033, Bath Lane (signposted Forest Town/Clipstone).
2. Continue through two mini roundabouts remaining on the B6033, Ravensdale Road.
3. At the junction turn left onto the B6030, Sherwood Hall Road.
4. We are now on your right hand side and you should take the first exit to your right into our car park where we have limited parking for visitors (see diagram below)



At the barrier press the intercom and reception will allow you into the car park. Take the second entrance on your left where you will see approximately 6 visitor spaces.

Continue straight ahead if you require disabled parking.

In the event of a fire drill or evacuation of the building during your visit, please leave by the nearest emergency exit and assemble on the outdoor games court.

You will find our main reception to the front of the building in the centre.

Pedestrian access is via a separate entrance gate.