

# 2026

SAMWORTH  
CHURCH  
ACADEMY



## SIXTH FORM PROSPECTUS



01623 663452



[sixthformteam@tscacademy.org.uk](mailto:sixthformteam@tscacademy.org.uk)

# Welcome

---

The Sixth Form at the Academy is 'Good' and students have a range of Level 3 courses on offer. We have dedicated areas for Sixth Form study but the overall philosophy is that our Sixth Formers are a fully integrated part of the Academy community. They are our student leaders and are expected to behave and interact with all at the Academy in a professional, friendly and caring manner. We provide many opportunities for students to develop their leadership skills and develop as individuals in a way that will make them stand out on any future applications for university, apprenticeships or employment. Our Sixth Formers are exceptional young people and we are very proud of all of their achievements.



**01623 663452**



**sixthformteam@tscacademy.org.uk**



## CHRIS VALLANCE, VICE PRINCIPAL

Our sixth form really is one of the shining lights of our academy. It is a huge privilege to be a part of the sixth form team and work alongside our incredible students and staff.

We pride ourselves on positive academic outcomes for students whilst also making them fully rounded members of both the academic and local community. This is achieved through a broad curriculum offer that is further enhanced through a great variety of extra-curricular activities. Furthermore, this extensive curriculum offers something to students with varied interests and learning styles. Our guidance programme ensures students are able to understand and navigate the complex society around them, all while keeping great focus on their own personal development and wellbeing. We look forward to welcoming you to Samworth Sixth Form and for you to further enhance our dynamic post-16 area.



## LAURA JONES, HEAD OF SIXTH FORM

It is my absolute honour and pleasure to lead the Sixth Form Team, and to work alongside such incredible staff and students. We pride ourselves on an individualised, supportive approach, helping every child to achieve maximum progress with minimal stress, with the support they need to flourish. We offer a range of additional opportunities alongside a wide range of academic offer. Including an excellent Personal Development Programme, a wide range of careers experiences and a broad enrichment programme. All in a bid to prepare students for seventy plus great years, as well rounded, balanced individuals who can thrive in modern day Britain.



**01623 663452**



**sixthformteam@tscacademy.org.uk**

# SIXTH FORM

SAMWORTH  
CHURCH  
ACADEMY



Students should select 3 courses they wish to study and we would always recommend having a back up option.

Students in year 12 will undertake 3 Level 3 courses, A level or BTEC alongside 1 enrichment activity. These activities include:

- Extended Project Qualification (EPQ)
- Sports Leaders
- Early Teacher Training
- Young Leaders
- Peter Jones Tycoon Challenge
- Core Maths

Sixth form students will be part of a tutor group and will participate in Guidance sessions for one hour per week covering PSHE, RS and careers content appropriate to their KS5 studies.

Our aim is to best prepare students to leave us ready to succeed in their next step.



**01623 663452**



[sixthformteam@tscacademy.org.uk](mailto:sixthformteam@tscacademy.org.uk)

# COURSES

- Accounting
- Animal Management (BTEC)
- Applied Psychology (BTEC)
- Applied Science (BTEC)
- Art
- Biology
- Business Studies
- Chemistry
- Computer Science
- Cookery
- Dance
- English Literature
- Film Studies
- French
- Geography
- Hairdressing
- Health & Social Care (BTEC)
- History
- Information Technology
- Mathematics
- Maths (Further)
- Media Studies
- Music
- Music (RSL)
- Performing Arts (RSL)
- Photography
- Physical Education
- Physics
- Product Design
- Psychology
- Religious Studies
- Sociology
- Spanish
- Sport (BTEC)

SAMWORTH  
CHURCH  
ACADEMY



**01623 663452**



[sixthformteam@tscacademy.org.uk](mailto:sixthformteam@tscacademy.org.uk)



# Accounting

## A Level



### Entry requirements

GCSE Maths grade 6

### How will I be assessed?

Paper 1- 3 hours 50%

Paper 2- 3 hours 50%

## Modules include:

- An introduction to the role of an accountant in a business
- Types of business
- Analysis and evaluation of financial information
- Limited company accounts
- Capital investment appraisal
- Partnership accounts
- The double entry model
- Verification of accounts records
- Preparation of financial statements of sole traders
- Budgeting
- Marginal costing
- Absorption and activity based costing

### Where could this lead?

Financial Accountant

Tax

Management Accountant

Wages Clerk

Payroll

Consultant

# Animal Management

## BTEC Level 3 National Extended Certificate



### Entry requirements

GCSE English grade 4  
BTEC Level 2 Pass

### How will I be assessed?

1- Written exam 33%  
Coursework- 4 individual pieces  
covering 67%

### Modules include:

- Animal behaviour
- Practical animal husbandry
- Work experience in the Animal Care vocational area
- Understand the different roles of animals and animal related organisations in society
- Principles of animal behaviour
- Understand the essential signs of good and ill health in animals
- Animal Housing and accommodation

### Where could this lead?

Animal Care worker  
Dog Trainer  
Animal handler  
Zoo keeper  
Agriculture worker

# Applied Psychology

## BTEC Level 3 Extended Certificate



### Modules include:

- Approaches in Psychology
- Research Methods
- Health Psychology
- Introduction to Psychopathology

### Entry requirements

GCSE English grade 5  
GCSE Maths grade 3  
BTEC Level 2 Merit

### How will I be assessed?

Exam 58%- 2 exam units  
Coursework 42%- 2 coursework units

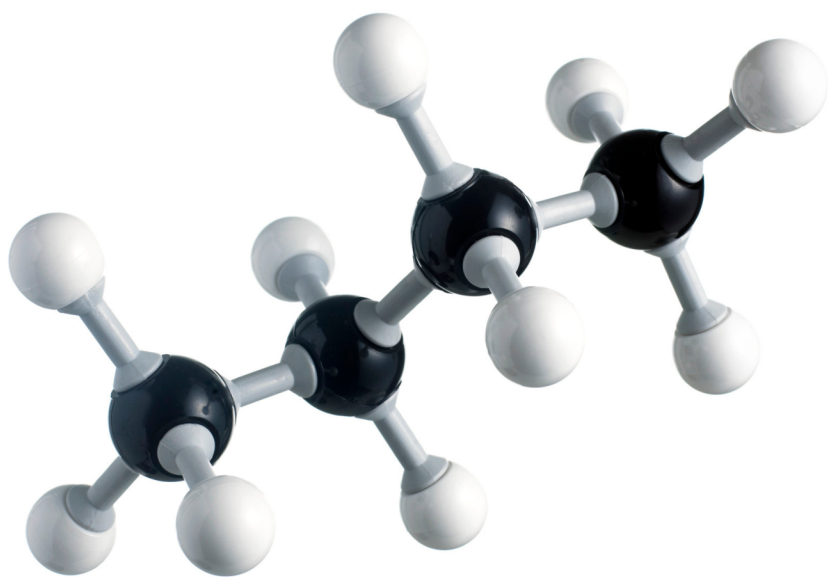
### Where could this lead?

Psychologist  
Social Care  
Criminology  
Counselling  
Therapist  
Further Education Teacher  
Mental Health support worker



# Applied Science

## BTEC Level 3



### Entry requirements

GCSE Maths grade 5  
GCSE Science 5.5

### How will I be assessed?

Exam 40%  
Coursework 60%

### Modules include:

- Principles of Applied Science 1
- Practical scientific procedures and techniques
- Scientific investigation skill
- Human regulation and reproduction
- Laboratory techniques and their application
- Principles and Applications of Science 2
- Investigative report
- Physiology of body systems

### Where could this lead?

Researcher  
Sports Science  
Forensic Science  
Pharmaceuticals  
Product development-chemical

# Art

## A Level



### Entry requirements

GCSE English grade 5  
GCSE Art grade 5

### How will I be assessed?

Personal investigation 60%  
Externally set task 40%

15 hour exam

## Modules include:

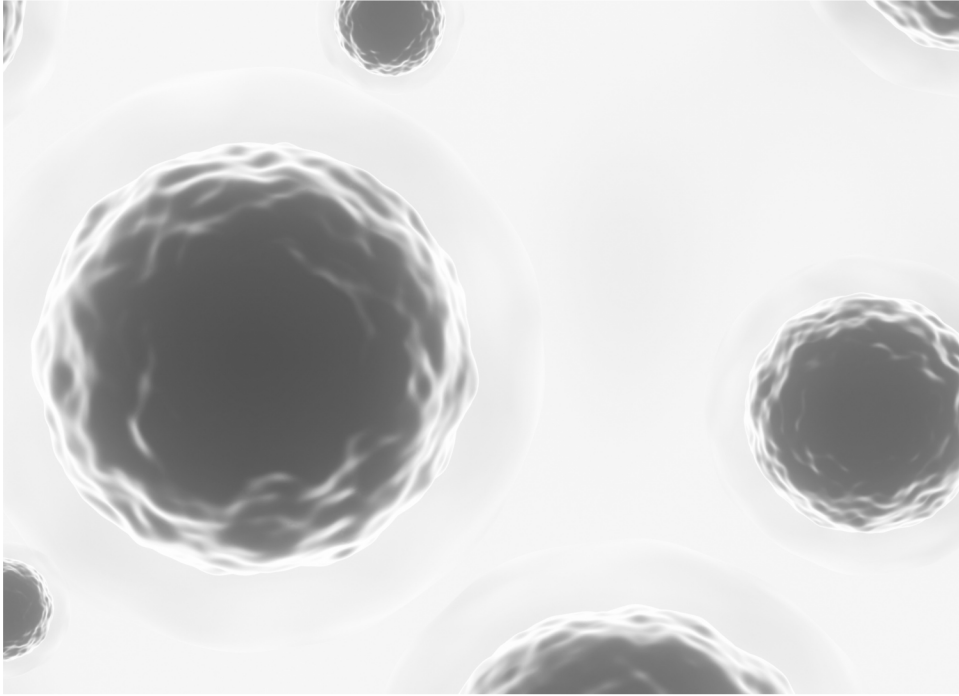
- Creating a personal project in response to a given theme
- Creating a portfolio of practical work showing development of ideas, experimentation and review and detailed recording of ideas whilst giving personal meanings to the work
- Showing contextual understanding of Artists and designers who influence student work
- Experimentation with several media, techniques and processes
- Analysis and evaluation of work throughout
- Written related study to support the personal project

### Where could this lead?

Artist  
Curator  
Designer  
Art therapist  
Architect

# Biology

## A Level



### Entry requirements

GCSE Maths grade 5  
GCSE Biology grade 6 or  
GCSE Combined Science 6.6

### How will I be assessed?

3 Exams  
Required practical assessments

## Modules include:

- Biological molecules
- Cells
- Exchanging substances with the environment
- Genetics, variation and relationships between organisms
- Energy transfer in and between organisms
- Organisms respond to changes in their internal and external environments
- Genetics, populations, evolution and ecosystems
- The control of gene expression

### Where could this lead?

Medicine/Dentistry/Veterinary  
Biological Sciences  
Biomedical Science  
Virology  
Researcher

# Business Studies

## A Level



### Entry requirements

GCSE Maths grade 5  
GCSE English grade 5

### How will I be assessed?

Paper 1 2hrs 33.3%  
Paper 2 2 hrs 33.3%  
Paper 3 2 hrs 33.3%

Equal distribution of marks  
across the 3 papers

## Modules include:

- What is a business, why do they exist and how to start a business
- Role of management
- Market research, target markets and how to promote a business
- How to produce a product efficiently, to a good quality
- Raising finance, managing cash and making a profit
- Business strategy
- Managing change in relation to business
- Managing the culture and keeping staff happy whilst implementing change

### Where could this lead?

Entrepreneur  
Business administration  
Management  
Marketing  
Analyst  
HR



# Chemistry

## A Level



### Entry requirements

GCSE Maths grade 5  
GCSE Chemistry grade 6  
or  
GCSE Combined Science  
grade 6.6

### How will I be assessed?

3 Exam papers  
Required practical assessments

## Modules include:

- Physical Chemistry
- Inorganic and Organic Chemistry
- Chromatography
- The interaction of chemical elements and the role they play in making up our world and beyond
- Implementing Science beyond a laboratory setting
- Analytical, evaluative and synoptical skills in relation to Chemistry
- Planning to manipulate information and data

### Where could this lead?

Research  
Engineering  
Medicine/ Dentistry/ Veterinary  
Pharmaceuticals  
Petrochemicals  
Forensic Science  
Nursing

# Computer Science

## A Level



## Modules include:

- Fundamental principles and concepts of computer science including: abstraction, decomposition, logic, algorithms and data representation
- The ability to analyse problems in computational terms through practical experience of solving such problems, including writing programs
- The capacity to think creatively, innovatively, analytically, logically and critically
- The capacity to see relationships between different aspects of computer science
- Mathematical skills

### Entry requirements

GCSE Computer Science grade 8

### How will I be assessed?

Computer Systems 40%  
Algorithms and programming 40%  
Programming project 20%

### Where could this lead?

Engineering  
Finance  
Business  
Computer programming  
Software developer



# Cookery

## Leiths Level 3 Extended Certificate in Professional Cookery



### Entry requirements

GCSE Maths grade 4  
GCSE English grade 4

### How will I be assessed?

2 x 3 hour practical cooking assessments  
Online food hygiene and allergen exam  
Planning coursework task

## Modules include:

- The Level 3 Extended Certificate in Professional Cooking accredited by the Confederation of Tourism and Hospitality (CTH) is a hands-on practical cookery qualification. It is a five-term course based around practical menus designed to develop a wide range of culinary and transferable skills. It is designed for students who want to develop the knowledge and skills required for a wide range of careers as well as a lifetime love of cooking good food. This qualification enhances a personal statement and UCAS application and can play a pivotal role in opening the door to careers in food and drink including becoming a chef, food photography and product development as well as marketing and advertising in food. The course also offers a clear onward learning pathway to our Level 4 Diploma at Leiths School of Food and Wine in London.

### Where could this lead?

Chef  
Food Scientist  
Hospitality and catering assistant  
Nutritionist

# Dance

## A Level



### Modules include:

- Creation of solo dance in the style of a practitioner
- Practical techniques in contemporary and jazz dance
- Creation of the quartet in the given style
- Crafting of a Choreography in response to a given stimulus
- The study of independent contemporary dance sector
- The study of Ballet Rambert 1966-2002
- Set work analysis

### Entry requirements

GCSE Dance grade 6  
GCSE English grade 5

### How will I be assessed?

50% on performance, both solo and group, which will be a combined choreography unit  
50% written exam

### Where could this lead?

Performance  
Dance  
Theatre  
Teaching  
Therapy  
Creative writing

# English Literature

## A Level



## Modules include:

- A variety of fascinating texts from novels, to drama, to poetry!
  - These include 'Othello', 'The Handmaid's Tale' and 'The Great Gatsby'
- An independent critical study based on two texts of your choice which will allow you to pursue a theme you enjoy
- Students are encouraged to engage with discussions exploring a wide range of issues.

### Entry requirements

GCSE English grade 6

### How will I be assessed?

2 Papers

1- 3hrs 40%

2- 2hr 30 40%

3- Coursework, critical study of texts across time, 20%

### Where could this lead?

Teaching

Journalism

Creative writing

Politics

Philosophy

Broadcasting

# Film Studies

## A Level



## Modules include:

- This course provides an excellent compliment to creative, psychology or English-based subjects.
- You will enjoy watching films and learning about how they are made - students have loved learning how to understand the 'deeper meaning' of films, which has led them to enjoy this art form in ways they never thought about before.
- Studying film is also an excellent way to learn about people, and the world - we study the historical contexts behind the films.
- For coursework, you will get to create a short film, or write the screenplay for one.
- Students will be expected to complete the 'wider reading' and research requirements in their own time.
- Key concepts, theories and terminology used in the study of film.
- Complete a study of six films from multiple perspectives
- In your second year you will study a further five films, including experimental and documentary filmmaking.
- A complete assessment in the form of either a short film or screenplay with a fully photographed storyboard.

### Entry requirements

GCSE English grade 5  
GCSE Film grade 5 is desirable  
but not essential

### How will I be assessed?

2 Papers  
1- 35%  
2- 35%  
3- Coursework 30%

### Where could this lead?

Film industry  
Teaching  
Journalism  
Creative writing  
Media  
Broadcasting

# French

## A Level



### Modules include:

- Discussing, agreeing and arguing
- Listening, understanding and summarising
- Reading, understanding and summarising
- Deeper analysis of literature and film in French
- Speaking in detail to answer questions and debate issues
- Listening for comprehension
- Reading for comprehension
- Writing summaries to adapt what has been heard or read into your own words
- Writing to analyse and evaluate French literature and film

### Entry requirements

GCSE French grade 6  
GCSE English grade 4

### How will I be assessed?

2 Papers  
1- 50%  
2- 20%  
3- Speaking exam 30%

### Where could this lead?

Linguist  
Translator  
International relations  
Politics  
Languages



# Geography

## A Level



### Entry requirements

GCSE Humanities grade 5  
GCSE Maths grade 5  
GCSE English grade 5

### How will I be assessed?

3 Papers  
1- 30%  
2- 30%  
3- 20%

## Modules include:

- Globalisation
- Migration changes
- Urbanisation
- Global warming
- Climate change
- Disaster hotspots
- Climate change in relation to coastlines
- Energy security
- Water
- Biodiversity
- Superpower Geography
- Bridging the development gap
- Food supply
- Cultural diversity
- Pollution
- Leisure and Tourism

### Where could this lead?

Environmental engineering  
International development  
Town planning  
Law  
Geographic information system  
mapping and disaster  
management



# Hairdressing

## NVQ Level 2 Diploma



### Modules include:

- Advise & Consult with Clients
- Shampoo, condition and treat the hair and scalp
- Develop and maintain your effectiveness at work
- Style and finish hair
- Set and dress hair
- Cut hair using basic techniques
- Colour and lighten hair
- Plait and twist hair
- Fulfil salon reception duties

#### Entry requirements

No formal entry requirements

Interview

#### How will I be assessed?

There is a theory exam for each unit.

Your practical skills will be assessed multiple times per unit.

#### Where could this lead?

Graduate stylist Hairdresser  
NVQ Level 3 Hairdressing

# Health + Social Care

## BTEC Level 3 National Certificate



### Entry requirements

GCSE English grade 4  
BTEC Level 2 Pass

### How will I be assessed?

Exam 58%- 2 exam units  
Coursework 42%- 2 coursework units

### Modules include:

- Understanding different types of communication
- Understanding concepts related to equality, diversity, knowledge and discriminating practice, how to overcome it
- Understanding Health and Safety within a Health and Safety Environment, Law
- Different stages of lifespan
- An overview of the human body
- Public Health Policies, Current Legislation
- Essay writing, team work, evaluation and analysis

### Where could this lead?

Nursing  
Education  
Policing  
Social Care  
Care assistant  
Support worker

# History

## A Level



## Modules include:

- Britain Transformed, 1918 - 97.
  - Learn how Britain was transformed socially and politically by war, technology and the struggle for greater social equality.
- The USA: Conformity and Challenge, 1955 - 92.
  - Learn how the USA sought to live the "American Dream" but had to face up to the challenges of Civil Rights protests, the fight for women's rights and the development of Rock and Roll
- Lancastrians, Yorkists and Henry VII, 1399 - 1509.
  - Study the dramatic developments in late medieval England that centered around the personalities and political skills of kings, queens and their powerful subjects
- Russian Revolution, 1917.
  - A coursework study of this fascinating topic and the interpretations of different historians.

### Entry requirements

GCSE History or RS grade 5  
GCSE English grade 5

### How will I be assessed?

3 Papers  
1- 2hrs 15  
2- 1hr 30  
3- 2hrs 15  
Coursework- 4000 words

### Where could this lead?

Law  
Journalism  
Teaching  
Research  
Politics  
Museum work  
Archaeology

# Information Technology

## Cambridge Technical Level 3



### Entry requirements

GCSE Computer Science grade 4

### How will I be assessed?

Exam- 50%  
Three pieces of coursework

## Modules include:

- How IT technologies and practices are essential for IT professionals
- IT fundamentals in hardware, networks, software and ethical use of computers in business
- How organisations use information and the types of information
- IT legislation, regulation governing use of information
- How to design applications
- Understand how to create mobile applications
- How social media and digital marketing can have a positive and negative effect

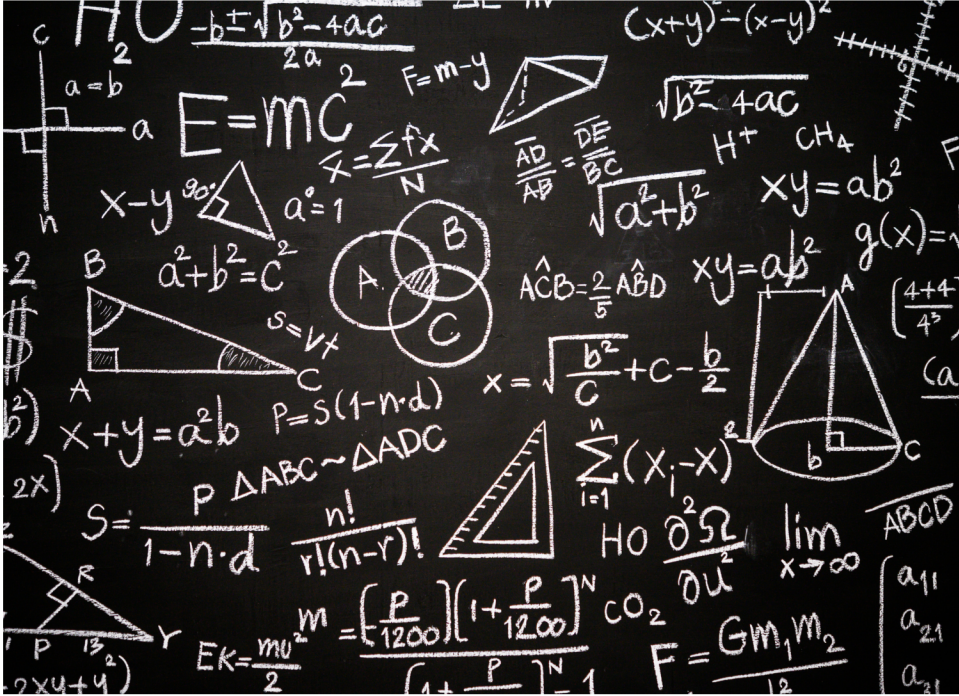
### Where could this lead?

IT Support worker  
Game development  
Web and animation development  
Network security  
Systems analyst  
IT Sales



# Mathematics

## A Level



### Entry requirements

GCSE Maths grade 7

### How will I be assessed?

3 Papers

1- 2hrs

2- 2hrs

3- 2hrs

## Modules include:

- Co-ordinate geometry
- Calculus
- Graphs
- Algebra
- Gain a deeper understanding of trigonometry
- Statistics, including probability and normal distribution
- Mechanics, including Newton's Laws of Motion and constant acceleration formulae
- Gaining an understanding and appreciation of vectors.

### Where could this lead?

Mathematics

Physics

Engineering

Medicine

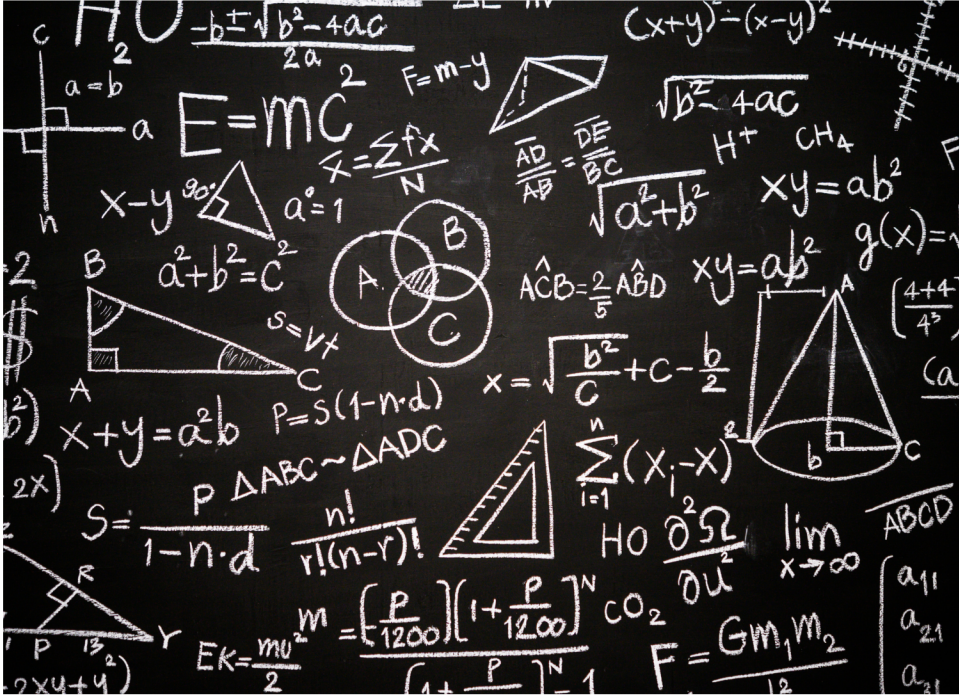
Psychology

Architecture

Finance and Accounting

# Mathematics (Further)

A Level- To be studied in addition to 3 other A Level options



Modules include:

In Further Mathematics, you will study the more abstract and pure mathematical ideas such as complex numbers and learn about matrices – a whole new element to algebra. You can also delve deeper into applied modules, looking at higher level optimisation or some advanced testing of statistical hypotheses. You may even have a taste of mechanics to give you a taster of what you might study on an Engineering degree.

If you are considering studying Mathematics at university, Further Mathematics is an excellent way to bridge the gap and cover some of the first year topics of your degree.

## Entry requirements

GCSE Maths grade 8 and taking  
A Level Maths during y12

## How will I be assessed?

3 x 2hr papers

## 1- Pure Maths

## 2- Pure Maths

3- Applied Maths (2 from mechanics, discrete and statistics)

Where could this lead?

Mathematics

# Physics

# Engineering

## Medicine

Psychology

# Architecture

## Finance and Accounting



# Media Studies

## A Level



## Modules include:

- This course provides an excellent complement to creative, business or psychology-based subjects.
- You will enjoy learning about how a variety of media industries work, and explore how media products are made.
- You will get to create a set of linked media products for your coursework, such as a music video and tour poster, or DVD cover and film poster.
- Media Products, Industries and Audiences
- Media Forms and Products in Depth
- Television in the Global Age
- Magazines: Mainstream and Alternative Media
- Media in the Online Age
- Cross Media Production

### Entry requirements

GCSE Media studies grade 5 is desirable but not essential  
GCSE English grade 5

### How will I be assessed?

1- 2hrs 15 35%  
2- 2hr 30 35%  
3- Non exam assessment-coursework 30%

### Where could this lead?

Marketing  
Film  
Advertising  
Music video  
Journalism  
Video games

# Music

## A Level



### Entry requirements

GCSE Music grade 7  
Must play an instrument  
GCSE English grade 5

### How will I be assessed?

1- Listening exam 40%  
2- Coursework- 60%  
Performance and composition elements

### Modules include:

- The Western Classical Tradition (The Development of the Symphony 1750-1900) which includes two set works.
- A choice of one area of study from: Area of study B: Rock and Pop, Area of study C: Musical Theatre and Area of study D: Jazz
- A choice of one area of study from: Area of study E: Into the Twentieth Century including two set works. Area of study F: Into the Twenty-first Century including two set works

### Where could this lead?

Musician  
Composer  
Sound engineer  
Producer  
Musicologist  
Music therapist  
Private tutor and teacher

# Music

## RSL Level 3 Subsidiary Diploma for Music Practitioners



### Entry requirements

GCSE Music grade 5  
GCSE English grade 5

### How will I be assessed?

Two core units: 'Planning for a Career in Music' and one other depending on the pathway  
One additional unit of the students choosing from any pathway

### Modules include:

- Students can choose a specific pathway to follow, performance, composition, technology or business. Each pathway has different modules.
- Performance pathways modules include Rehearsal skills & Live Performance and Recorded Music Performance.
- Composition pathways include Composing Styles & Music Sequencing and Composing for Film and Documentary.
- Technology pathways include Live Sound Recording & Sound Reinforcement and Studio Sound Mixing

### Where could this lead?

Musician  
Composer  
Sound engineer  
Producer  
Musicologist  
Music therapist  
Private tutor and teacher

# Performing Arts

## Level 3 Diploma RSL



### Modules include:

- Performance preparation
- Planning for a career in the performing arts sector
- Acting for camera
- Contemporary theatre
- Drama in the community
- Vocal techniques

#### Entry requirements

GCSE Drama grade 5  
GCSE English grade 5

#### How will I be assessed?

Units for this course are entirely practical with written coursework.

Pass, Merit, Distinction grading

#### Where could this lead?

Performer  
Designer  
Director  
Actor  
Musical Theatre



# Photography

## A Level



### Entry requirements

GCSE English grade 4  
GCSE Art or Photography grade 5

### How will I be assessed?

Coursework 60%  
Exam 40%

15 hour exam

## Modules include:

- Creating mind maps and mood boards to convey a theme or idea
- Primary photographs
- Research of photographers
- Photographer analysis skills
- Contact sheets
- Manual and digital manipulation
- Photoshop
- Evaluation skills
- Planning a composition

### Where could this lead?

Creative industries  
Photographer  
Art therapy

# Physical Education

## A Level



### Modules include:

- Physiological factors affecting performance
- Skeletal system
- Muscular system
- Respiratory system
- Environmental effects on body systems
- Biomechanics
- Psychological factors affecting performance
- Skill acquisition
- Sports psychology
- Sociocultural issues in physical activity and sport
- Sport and society

### Entry requirements

GCSE English grade 4  
GCSE Science grade 5  
GCSE PE grade 5  
Must play sport outside of school to a high level

### How will I be assessed?

3 Exams

Coursework

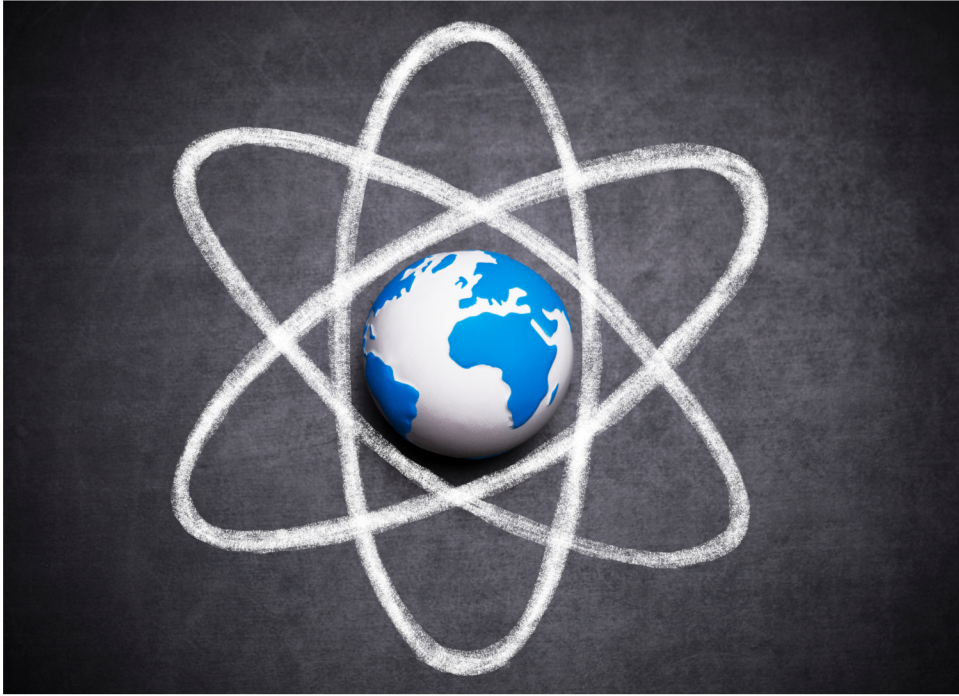
EAPI- analysis of performance  
Practical Performance

### Where could this lead?

Physical Education Teacher  
Sports Scientist  
Sports Coaching  
Performance sport  
Nutritionist  
Sports Psychologist

# Physics

## A Level



### Entry requirements

GCSE English grade 6  
GCSE Physics grade 6  
or  
GCSE combined Science 6.6

### How will I be assessed?

3 Exams

### Modules include:

- Measurements and their errors
- Particles and radiation
- Waves
- Mechanics and materials
- Electricity
- Further mechanics and thermal physics
- Fields and their consequences
- Nuclear physics
- Astrophysics
- Medical physics
- Engineering physics
- Turning points in physics
- Electronics

### Where could this lead?

Medicine  
Engineering  
Environmental Science  
Veterinary Medicine  
Dentistry

# Product Design

## A Level



### Entry requirements

GCSE Maths grade 5  
GCSE Technology grade 6

### How will I be assessed?

Written exam 50%  
Coursework 50%

## Modules include:

- Identifying and outlining possibilities for design
- Identification and investigation of a design possibility, investigation of client/end user
- Designing a prototype
- Design and development of design idea
- Making a final prototype
- Design, manufacture and realisation of final prototype, including tools, equipment, quality and accuracy
- Evaluation of own design and prototype

### Where could this lead?

Furniture design  
3D design  
architecture  
Engineering  
Product design



# Psychology

## A Level



### Entry requirements

GCSE English grade 6  
GCSE Maths grade 5

### How will I be assessed?

3 Papers- each 33.3%

### Modules include:

- Social influence
- Memory
- Attachment
- Research methods
- Approaches in Psychology
- Biopsychology
- Relationships, stress and addiction
- Key debates and research debates within Psychology
- Gender and culture
- Free will and Determinism
- Nature vs Nurture debate
- Holism vs Reductionism
- Idiographic vs Nomothetic Research

### Where could this lead?

Psychology  
Criminology  
Social Services  
Police  
Counselling  
Mental Health  
Public Services

# Religious Studies

## A Level



### Entry requirements

GCSE English grade 5  
GCSE Humanities grade 5  
GCSE Religious Studies grade 6

### How will I be assessed?

100% Examination

### Modules include:

- Ancient philosophical influences
- The nature of the soul, mind and body
- Arguments about the existence or non-existence of God
- Normative ethical theories
- Ethical language and thought
- Sexual ethics and the influence on ethical thought of developments in religious beliefs
- There is a key change in A Level RS which is the emphasis on Philosophy and Ethics throughout the course, which is different from GCSE

### Where could this lead?

Theology  
Philosophy  
Environmental Science  
Archaeology  
Civil Service

# Sociology

## A Level



### Entry requirements

GCSE English grade 6 OR  
GCSE Humanities grade 6  
(including RS)

### How will I be assessed?

3 x 2hr Exam Papers- 33.3%  
each

## Modules include:

- Introducing Socialisation, Culture & Identity
- Introducing key terms in sociology
- Culture, norms, values and identity
- How diverse are modern families?
- Researching & Understanding
- Social Inequalities
- Debates in Contemporary Society
- Globalisation and the digital social world: What is the impact of advancing social media?

### Where could this lead?

Policing  
Research  
Teaching  
Politics  
Civil Service



# Spanish

## A Level



## Modules include:

- Hispanic Society, values and traditions
- Regional identity
- Artistic culture in the Hispanic World
- Spanish Film
- Listening for comprehension
- Reading for comprehension
- Aspects of Hispanic politics
- Immigration
- Hispanic youth
- Spanish work of literature
- Writing to analyse and evaluate Spanish literature and film

### Entry requirements

GCSE Spanish grade 6  
GCSE English grade 4

### How will I be assessed?

Speaking exam- 30%  
Listening, reading and  
translation exam 50%  
Two essays- 20%

### Where could this lead?

International relations  
Finance  
Interpreting  
Teaching  
Overseas careers



# Sport

## BTEC Level 3 National Extended Certificate



### Modules include:

- Anatomy and Physiology
- Fitness training and programming for health, sport and well-being
- Professional development in the sports industry

Optional unit can be chosen from;

- Sports leadership
- Application of fitness testing
- Sports psychology
- Practical sports performance

### Entry requirements

GCSE English grade 4  
BTEC Sport Level 2 Pass  
GCSE PE grade 4

### How will I be assessed?

Exam 1hr 30  
Fitness training and programming-  
2.5hrs to respond to a case study  
Coursework

### Where could this lead?

Fitness trainer  
Sports Coach  
Sports Science  
PE Teacher



Email the Sixth Form Team:  
[sixthformteam@tscacademy.org.uk](mailto:sixthformteam@tscacademy.org.uk)



Find us on Facebook at [facebook.com/thesamworthchurchacademy](https://facebook.com/thesamworthchurchacademy)  
Follow us on Instagram at [@thesamworthchurchacademy](https://www.instagram.com/thesamworthchurchacademy)



The Samworth Church Academy is a part of the Diocese of Southwell and Nottingham Academy Trust (SNMAT). To learn more visit [www.snmat.org.uk](http://www.snmat.org.uk)

#### Disclaimer

This prospectus is issued for the general guidance of students considering entry to the Post-16 provision at The Samworth Church Academy in September 2026. The information is correct at the time of going to press (Sept 2025) and the programmes and services described herein are those which Samworth Church Academy is planning to offer.

We make every effort to ensure that the content of our prospectus, website and other materials is accurate. However, on occasion it may be necessary to alter certain aspects of a module or programme, for example if changes are required to meet external requirements; or if programmes are under-subscribed and thus not feasible to run. In such circumstances we may have to alter the timetable, change the teaching location of the programme or, in extreme cases, cancel or substantially amend the content of the programme.

We cannot add additional groups when a subject is full, due to capacity. In this case we will operate the policy of the highest grades until it is full. Should any of these changes become necessary, we will give you as much notice as possible before they come into effect and ensure that any disruption to your studies is minimised.

