



## YOUR FUTURE, YOUR CHOICE

*Transition Event  
2026*

*Wednesday 20<sup>th</sup> May*

*12:00-4:00*

Option to enjoy lunch  
with your child  
cooked by pupils in  
our café.



### MEET PROVIDERS FROM

- Colleges and education
- Care and day services
- Leisure opportunities

### ALSO AVAILABLE

- Advice and support about accessing adult services, including health and social care
- Support with EHCP processes
- School's role in supporting next steps, including work experience and accreditations



01543 414 892  
[wendy.arnfield@saxon.set.org](mailto:wendy.arnfield@saxon.set.org)  
Work Experience and  
Community Coordinator  
[emily.thompson@saxon.set.org](mailto:emily.thompson@saxon.set.org)  
Assistant Head Secondary

# WEEKLY

# Bulletin Board



## Queen's Day 2026

### Friday 5<sup>th</sup> June

We Remember

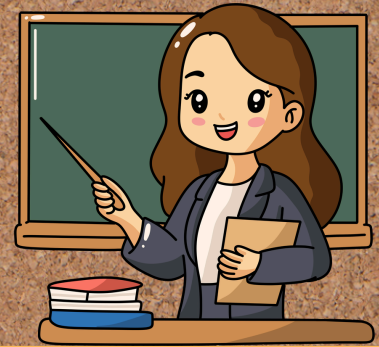
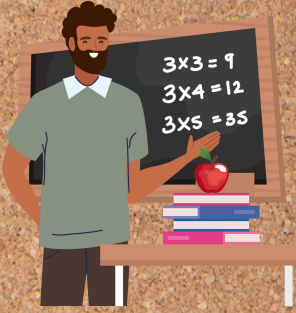
Memorial 11:00am - invitees only

Street party theme- open to parents 1:30-2:30pm



# WEEKLY

# Bulletin Board



National Thank a Teacher Day is on the 17<sup>th</sup> June.

If you would like to thank a teacher, please click [here](#).

Thank  
you

THANK  
YOU



# WEEKLY

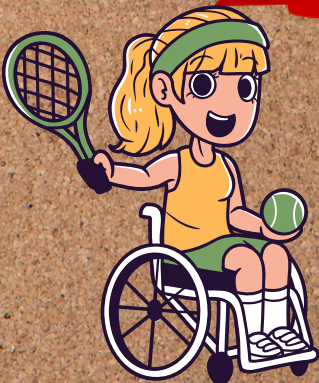


## Bulletin Board

### Sport's Day 2026

Primary : PM 16th/23<sup>rd</sup> June TBC

Secondary: PM 17th/24<sup>th</sup> June TBC



# WEEKLY



## Bulletin Board

### Half Term Activities

#### Staffy Trail in Tamworth

Explore Tamworth town centre and visit 3 amazing Staffy sculptures along the way.

Download the Staffy Trail App to unlock discounts and prizes or pick up a printed map from Tamworth library (or any Staffordshire library).

It takes about 1-1½ hours to walk and is accessible for people with most abilities.



Residents, families, schools and community groups are invited to take part in an exciting and creative project this summer to transform Tamworth Castle into a breathtaking 'Flower Castle.'

As part of the Tamworth Flower Festival, taking place from 23 to 26 July, the exterior of Tamworth Castle will be decorated with hundreds of handmade fabric, knitted and crocheted flowers, all created by the local community.

Join us at the Castle Stables at Holloway, for a free drop-in workshop.

Workshop Dates:

Thursday 28 May, 10:30am–2:00pm – Debbie Murphy

Friday 29 May, 10:30am–2:00pm – Sarah Baxter

Saturday 30 May, 10:30am–2:00pm – Debbie Murphy

\* Free, drop-in (no booking required – first come, first served)

\* Suitable for children (6+), adults and families

\* Children must be supervised by a responsible adult



# WEEKLY



## Bulletin Board

### More Half-Term Activities



Sunday 24th May 2026

An award-winning extravaganza that plays tribute to one of the leading contemporary recording artists of our time. Katy Ellis a self confessed 'Swiftie' with an incredible live band and dancers promises to deliver the most authentic recreation of a Taylor Swift show you will ever see.

Book [here](#)



Wednesday 27th May 2026

Bringing the unstoppable energy, dazzling choreography, and iconic style of the world's biggest music phenomenon, this spectacular tribute show celebrates the global K-pop explosion like never before.

Book [here](#)

# WEEKLY



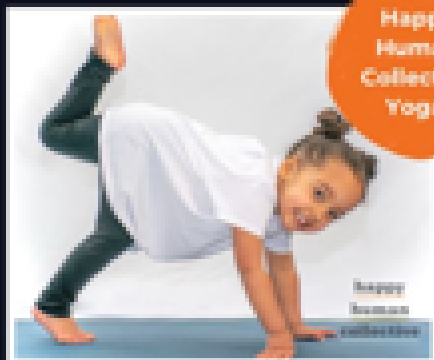
# Bulletin Board

## Day of DANCE

Inclusive  
Dance  
Workshop  
with Lauren



Happy  
Human  
Collective  
Yoga



Indian Fusion  
Dance & Craft  
Workshop



Day of Dance  
Showcase



### Featuring:

Strange Futures Theatre Company  
Ascension Youth Dance Company  
Out Of Whack  
Damn Fine Dance  
The Hub Dance Co  
Nrithyam School Of Dance

### Sunday 28<sup>th</sup> June

- 10am - Inclusive Dance Workshop with Lauren Russell (ages 11-18)
- 11.15am - Happy Human Collective Yoga - (ages 8-11)
- 12.30pm - Happy Human Collective Yoga - (ages 3-7yrs)
- 2pm - Indian Fusion Dance & Craft
- 2.45pm - Indian Fusion Dance Workshop
- 7pm - Day of Dance Showcase

All Tickets  
Priced  
£3 - £6

Book online at [TheHubStMarys.co.uk](http://TheHubStMarys.co.uk) or call 01543 256671



# WEEKLY

# Bulletin Board



## Key Dates

20th May - Transition Event at school

25th-29<sup>th</sup> May - Half Term

5<sup>th</sup> June - Queen's Day 11:00am Memorial  
1:30-2:30pm Open to parents

16/23<sup>rd</sup> June - Primary Sport's Day TBC

17/24<sup>th</sup> June - Secondary Sport's Day TBC

26th June - INSET Day - School closed to pupils.

20<sup>th</sup> July - End of Term

7th September - Pupils return to school

**EVIDENCE**

FOR LEARNING

Please check Evidence for Learning to see what your child has been up to this week.