



Seabridge Primary School

WELCOME TO
RECEPTION



Meet our Reception Teachers

RC

RK



Mrs Chapman



Miss Keeler



How will my child learn?

Early Years Foundation Stage.

The Early Years Foundation Stage (EYFS) sets the standards that all early years providers must meet to ensure that children learn and develop well and are kept healthy and safe. It promotes teaching and learning to ensure children's 'school readiness' and gives children the broad range of knowledge and skills that provide the right foundation for good future progress through school and life.



Areas of Learning.

- **The areas of learning are:**
- Communication and Language.
- Physical Development.
- Personal, Social and Emotional Development.
- Literacy.
- Mathematics.
- Understanding the world.
- Expressive arts and design.



Our day starts at **09:00am**. Doors will open at 08:55am and lock at 09:00am. If you arrive after 09:00am you will need to sign in at the school office. Doors will automatically lock at 09:00am as part of our lock down procedure and staff cannot override these.

We will start to release children back to you from **3:10pm**.

Passwords will be required by anyone collecting your child, especially those who staff are unfamiliar with or who would not normally collect your child.

Whilst we operate an open door policy, we would ask that non-urgent requests for information or anything that may need a longer discussion be addressed at the end of the school day or via the office as an email. For anything that you feel needs our urgent attention or relates to your child's needs for that day please speak to a member of staff on the door.

Our home school links books can be used as a means of communication but we do not always get chance to read comments in these daily and therefore, if it is important please contact a member of staff as above.



What your child will need.

- PE lessons will take place weekly and our PE day will be confirmed in September.
- Full PE kit will be required - coloured team top (this can be found on your pack), black shorts / jogging bottoms and trainers and children should come to school on their PE day and for fitness Friday dressed for PE.
- As some of the sessions will take place outdoors please ensure that your child is dressed appropriately especially as the weather turns colder.
- All items to be NAMED please.
- **Earrings**
- Children must not wear earrings on the day they have PE / Fitness Friday. They should be removed at home prior to attending school. Should earrings not be removed then children will not be able to participate in the PE lesson. Plasters/Tape is a health and safety issue and therefore, **cannot** be used.



Water Bottles.

Please ensure that your child brings in a named water bottle to school every day.

Water bottles should only be filled with water in line with the schools healthy lifestyles policy.

Children will be provided with milk and a healthy snack every morning. If your child is lactose intolerant you may provide an alternative milk drink so they can have a drink alongside their friends. Children are also welcome to bring their own fruit / healthy snack should you wish to provide them with this. Please ensure snacks do not contain nuts (cereal bars).



Book Bags

Please send your child into school with their Seabridge book bag every day. Bags are available from the Smart Uniform shop and these are ideal as they fit into your child's allocated tray. We have limited space and ask that rucksacks are not used.

Please leave your child's red home school link book in their bag as we will use these to communicate with yourselves, for sharing letters and recording your child's reading in school. Please also ensure their reading book remains in their folder as children will be read with weekly by a member of staff. You may also use the home school link book to communicate with ourselves. Please make us aware that there is a note in the book.

If returning forms or sending in money, please hand these directly to the class teacher as we may not have chance to look through every book bag daily.



Please use the home school link book to record any reading that your child does with you at home. Our school expectation is that your child reads at home at least 4 times a week using their allocated Rocket Phonics book.

Reading books will be issued each week. Tricky word (common exception words) bookmarks will be sent home as your child continues to progress with their reading. Tricky words are words that cannot be sounded out and children need to be able to both **read** and **write** these words.

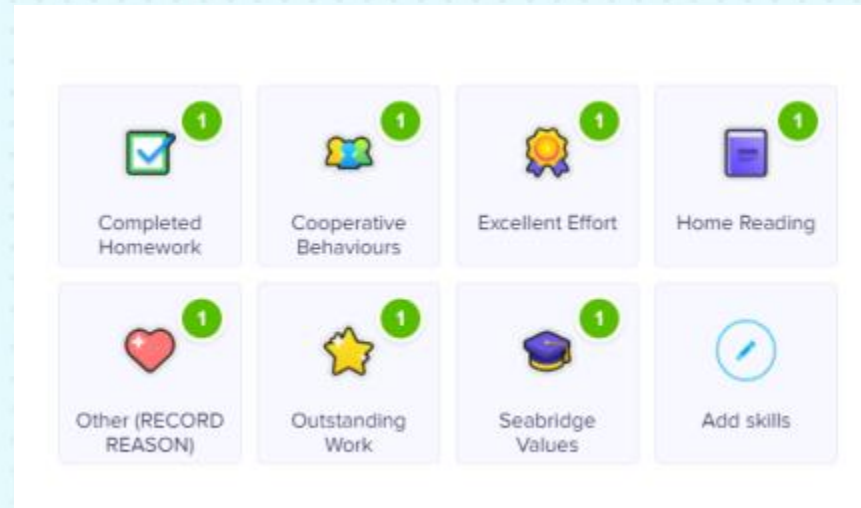
You can find phase 2 and 3 sounds in the front of your home school link book and high frequency words in the back. We will provide keyrings with the phonics sounds your child is currently learning.

Books are also available online and can be accessed via your child's Rising Stars account which will be set up in September.



Class Dojo is used for each class to share and celebrate the children's learning. We will update the story section regularly so that you can see the learning that is taking place within the class. The children can also earn dojo's for a number of positive behaviours and this contributes to their school team's weekly score.

Below you can see how pupils can earn positive dojos:



Whilst this is one way that children will be rewarded for demonstrating positive behaviour, we will continue to praise pupils in a range of ways such as: verbal praise, stickers, Seabridge Superstar and Golden Book.



Outdoor Learning.

- Children will access our outdoor area and woodland garden as part of their learning within the Early Years curriculum.
- This includes a garden, muddy area and small woodland. Therefore, your child will require wellies and waterproof clothing.
- We apologise in advance if your child comes home with mud or other remnants of messy play on their uniform but this is all part of their learning journey.





Toileting / Accidents.

Please ensure that your child has a spare set of clothes which can be left in school should they require them and should your child have an accident please replace missing items the following day.

If your child has a toileting accident we will send wet clothes home in a carrier bag. If your child has borrowed clothes from school please return these in a washed condition.

If your child has soiled themselves our policy is to dispose of their underwear.

You should have completed a form which grants us permission to change your child in the event of accidents. If these have not been completed, we would need to contact you for verbal consent to change your child. Copies may be obtained from the school office.



Attendance



Throughout your child's school life at Seabridge Primary, our Education Welfare Officers, VIP Education, monitor your child's attendance and along with them, we will notify you of any concerns.

Once your child turns five and the following term commences, our Education Welfare Officer continues to monitor your child's attendance ensuring we engage with you should it fall below the national average and offer you any support you require.

Please do not be overly concerned about our procedure. If your child has good attendance and it stays above 90% during each academic year our EWO may never be in touch but please be reassured that should they do, we are here to work with you and offer any support and advice that you should require.

We fully understand that children do have illnesses and we will take these into consideration when monitoring attendance.

Absences will be unauthorised for holidays except in exceptional circumstances.

If you do have any questions or concerns, please do not hesitate to contact us. We have attached a copy of our attendance policy should you wish to refer to it.



Attendance and Punctuality

School target: 97%

Persistent Absence: 90% and below

Attendance	Equivalent of attending school...	Missed learning per year (approx.)
100%	Every day	0
95%	4.75 days a week	1 week, 4 days
90%	4.5 days a week	3 weeks, 4 days
85%	4.25 days a week	5 weeks, 3 days (nearly half a term)
80%	4 days a week	7 weeks, 3 days (over half a term)

An average attendance of **80% or less** across a child's school career adds up to **missing 2 years** from school, resulting in huge gaps in learning and often impacting on a child's self-esteem and resilience as a learner.



Penalty notices are a last resort and we would much rather work with families to improve attendance, however our Education Welfare service (Attend) advises us of our legal duty to make you aware of the below timeline. This refers to penalties for **unauthorised** absence.

Timeline	One child	Two children
Paid within 21 days	£60 per parent	£60 per child = £120 per parent
After 21 days and before 28 days	£120 per parent	£120 per child = £240 per parent
After 28 days	You will be summoned to appear before the Magistrates' Court on the grounds you have failed to secure your child's regular attendance	You will be summoned to appear before the Magistrates' Court on the grounds you have failed to secure your children's regular attendance

It is the Local Authority who makes the decision whether to fine parents, not the school. The County Council retains any revenue from Penalty Notices to cover enforcement costs.



Punctuality is really important. It allows children to start the day ready to learn in an organised fashion and promotes a good work ethic which will support them throughout their lives. Please ensure your child is on time every day. **For Reception our doors will open at 08:55am.** The gates are locked promptly at 09:00am and arrival after this time may incur a late mark.

Lateness

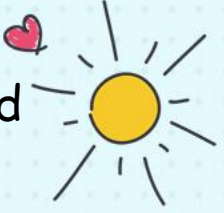
In one school year

5 minutes late each day = 3 days absence each year

15 minutes late each day = 2 weeks absence each year



Pupil and Premium funding, Free School Meals and Universal Free School Meals



Every child in Reception, Y1 and Y2 are able to have a free school meal each day - this is called Universal Free School Meals.

Families who are included in one of these categories are also entitled to a free school meal throughout KS2 (Y3-6) through the Pupil Premium funding:

- Income Support
- income-based Jobseeker's Allowance
- income-related Employment and Support Allowance
- support under Part VI of the Immigration and Asylum Act 1999
- the guaranteed element of Pension Credit
- Child Tax Credit (provided you're not also entitled to Working Tax Credit and have an annual gross income of no more than £16,190)
- Working Tax Credit run-on - paid for 4 weeks after you stop qualifying for Working Tax Credit
- Universal Credit - if you apply on or after 1 April 2018 your household income must be less than £7,400 a year (after tax and not including any benefits you get)

It is really important that you register your child for this Pupil Premium and therefore free school meals, even if they are in Reception or KS1 or even if your child wants to bring their own sandwiches,
as this triggers extra funding (Pupil Premium funding) to the school which can help your child and others.



Pupil Premium

The Pupil Premium is additional funding to schools from the government to support children of families who fall under the categories below, and the school is able to use this

in a variety of ways. You can apply for this funding at any time during the year, should your situation change, but the sooner the better is always the right approach. Applying is quick and simple, and our office team are more than happy to help and advise.

Funding becomes available if your child is included in one of these categories:

Pupils who are eligible for free school meals, or have been eligible in the past 6 years

Pupils who have been adopted from care or have left care

Children who are looked after by the local authority

How to apply:

Simply click on this link. It is a very quick process.

<https://www.cloudforedu.org.uk/ofsm/link2ict/>



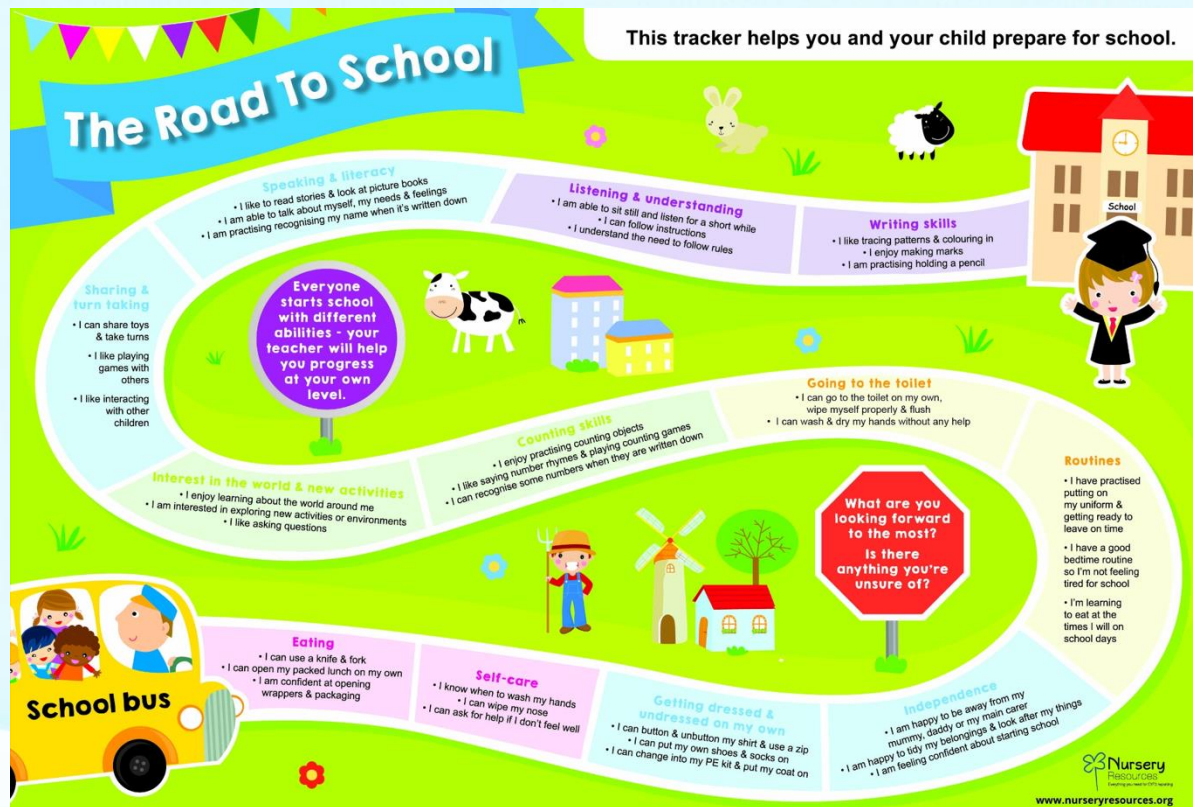
Birthdays.

We love to celebrate children's Birthdays but please be aware if sending sweets in that we have children in class who have specific dietary needs and / or allergies and therefore, as an alternative suggestion, you could donate a book for the children to share and put into the class library. We would create a label to place inside the book to say who has donated it.

Please **do not** send children to school with nuts or products containing nuts. If you are unsure please choose an alternative.

School Ready?

In your pack you will find a copy of the road to school. This will give you an idea of the things that we would like your child to be able to do or begin to do before they start in Reception. Please support your child throughout the summer to develop the skills listed. This will help to give them a fantastic start to their journey with us. Inside your pack you will find a range of activities to complete with your child. Please return these pages to school in September. We love to share these with your children and it supports us in getting to know them!





Keeping up to date:

- Class Dojo
- Website
- Twitter
- Facebook
- Newsletters
- Parentmail
- Text



Thank you!