



# SEATON SLUICE MIDDLE SCHOOL NEWS REVIEW

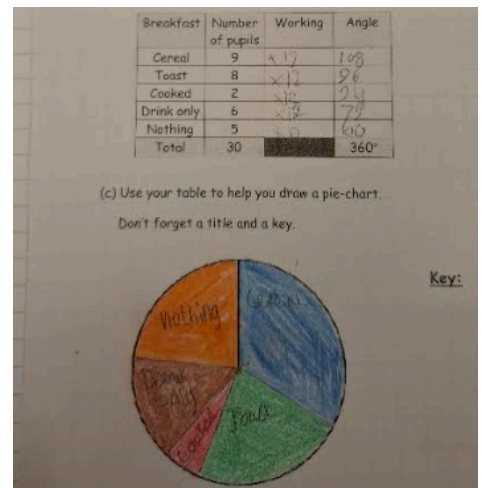
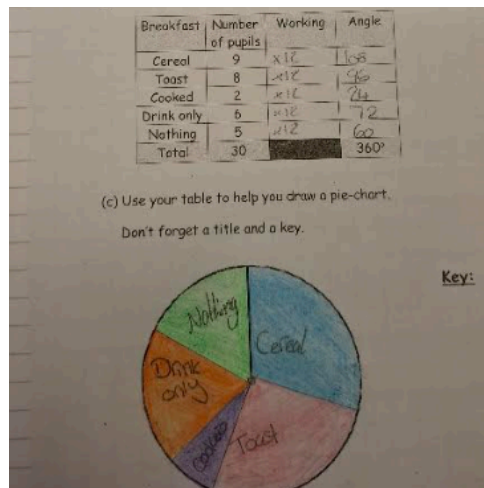
Week Ending January 16th, 2026

WSpring Term (1) End of Week 2: Read on to get the latest SSMS updates.

## Spotlight on maths:

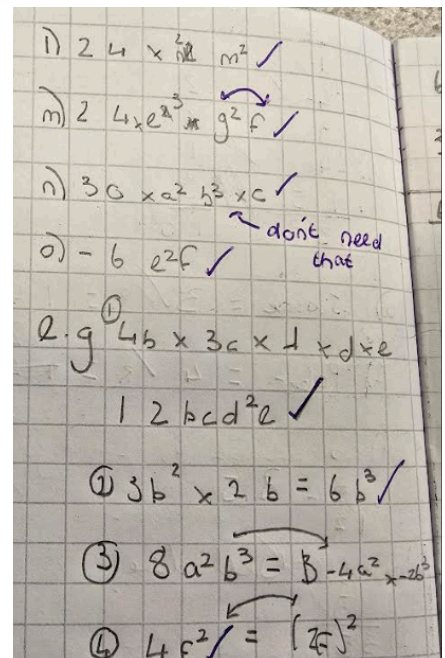
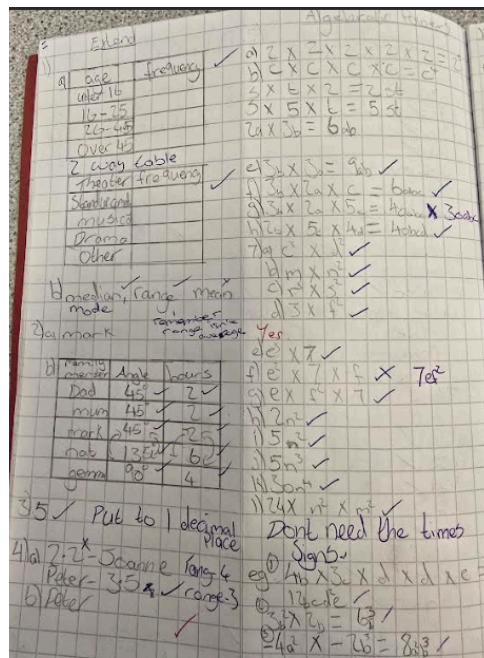
We encourage students to take a lot of pride in their work. One maths class has been drawing pie charts, a task that students can often find tricky.

Well done to Mal and Ruby who worked hard on this.



We also ask that students listen to comments made by teachers in lessons and add their own feedback on how to improve.

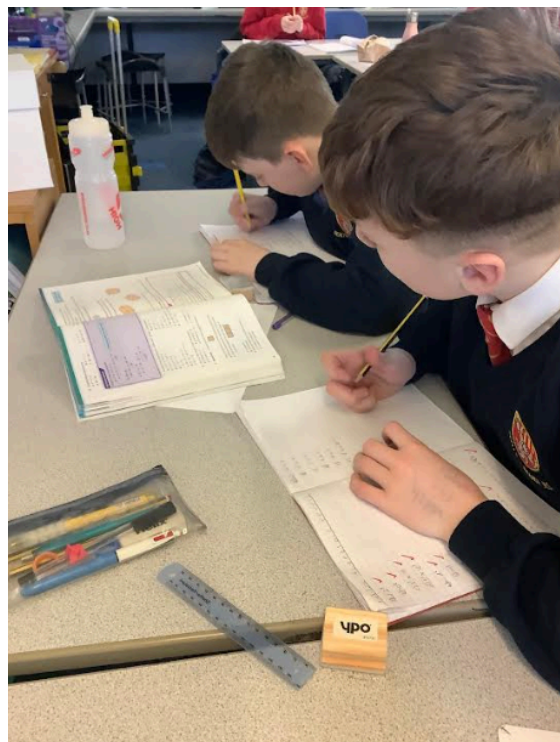
You can see how two students have done this when checking their algebraic work.



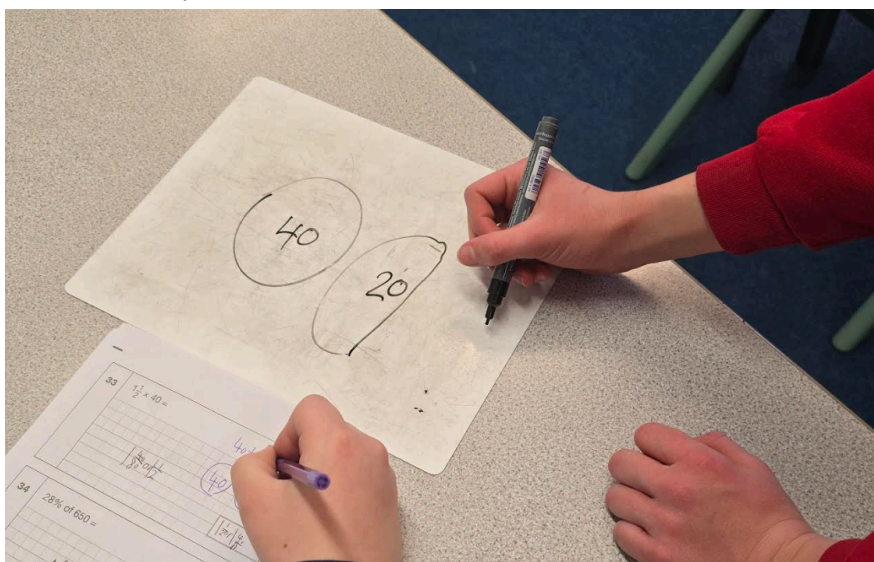
Proud to be a  
SchoolsNorth East  
Partner School



One class has been exploring algebraic powers, focusing on how to understand and simplify expressions involving indices. Through collaborative activities, they have been working together to write, interpret, and use algebraic expressions with powers, developing both their mathematical reasoning and teamwork skills.

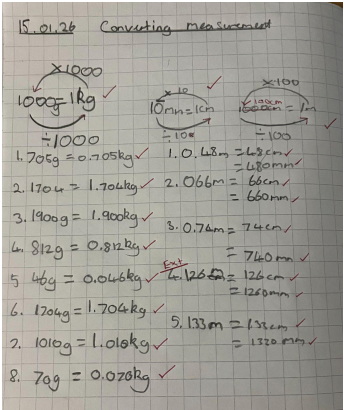


We have a fantastic group of KS3 volunteers who are mentoring Y6 students in arithmetic. Twice a week, the Y7s and Y8s work with Y6 children and look at mistakes they've made and help to teach them how to understand questions and become more confident in maths. This might be by explaining problems in an alternative way or by using supporting diagrams. We've been really impressed with the hard work that goes on and this has become a regular feature over the past few years. A Year 6 pupil, Lon, commented this week during his Maths lesson, 'I know how to do this because I did it with my Maths Mentor!'

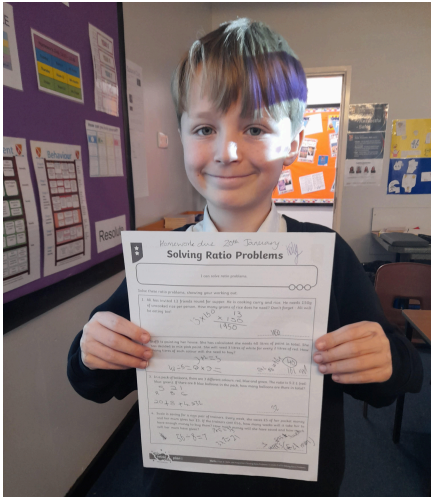
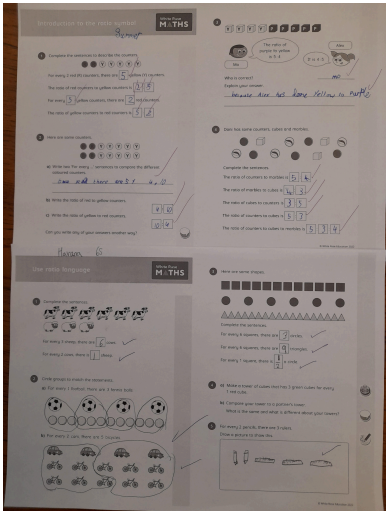
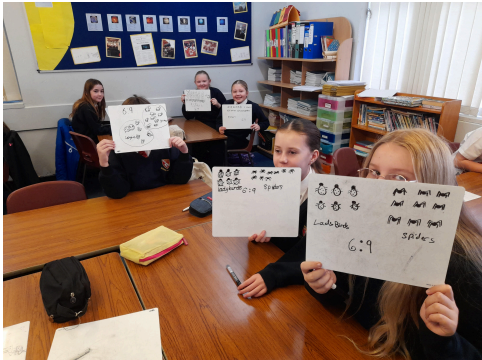
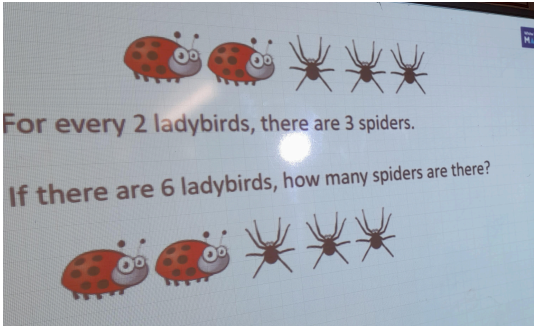




Year 6 set 3 have been working on metric measures this week, thinking about the types of units used to measure length, capacity and mass. We have also been converting between measurements, starting with grams to kilograms moving on to meters, centimeters and millimetres.



Year 6 Set 2 have been learning about ratio and proportion. They have looked for multiplicative patterns and have used pictures and diagrams to aid their understanding. After becoming more confident, pupils have been able to tackle ratio problems independently for homework.



## Bebras UK Challenge 2025

Before Christmas, the whole school took part in the Bebras UK Challenge, an international competition designed to introduce and develop computational thinking skills among students worldwide. A massive congratulations to everyone who participated and showed such enthusiasm and determination. Special mention must go to Bailey J (5E), Erin B (7S), Thomas H (7S), Jake G (7S), Dylan M (8E) and Oliver B (8E), who all achieved the prestigious Gold Award - placing them in the top 10% nationally! An extra well done to Bailey, Erin and Dylan, who were also named Best in School for their outstanding performances. Congratulations to all involved on a fantastic achievement!



Mrs Mason



INFLUENCING  
SUPPORTING &  
CONNECTING



Proud to be a  
**Schools North East**  
Partner School





## Bikeability



Many of our Year 5 and 6 pupils have completed their Bikeability training this week. An exceptional amount of resilience was shown during some very wet weather and our children have really challenged themselves to develop their cycling skills. We are delighted that all children passed! Our KS2 pupils represented the school brilliantly as the Bikeability staff commented on how polite and well-behaved they were! We are incredibly proud!!

## Space Club



Space club launched this week! The session was delivered by an astronomer who introduced the children to stellarium, a free open source planetarium which shows a realistic sky in 3D. After exploring the skies, the children embarked on a star hunt using the program to navigate the galaxy. The children were fascinated and we are excited for our next mission!



Proud to be a  
**SchoolsNorth East**  
Partner School



## Stargazing Event



Our whole school annual Stargazing Event was a great success this week. Over 60 attended to experience the indoor, inflatable planetarium which was out of this world! Sadly, it was quite cloudy but many were lucky to be able to use the magnificent telescopes to catch a clear view of Jupiter and some other stars outside. After returning indoors, there were space themed treats and hot drinks to warm us up where we also raised some funds for more science opportunities coming soon. Inside the classroom, families created rockets and competed to launch them the furthest! Also, using specialist equipment, beautiful images of stars and planets could be observed and the chance to explore the skies using ipads. As well as this, expert astronomers shared their wealth of knowledge and allowed everyone to touch meteorites that have landed all over the world. We are very grateful that Kielder Observatory offered this wonderful, learning opportunity.

The school has registered with the Royal Academy of Arts website. They are running a competition for pupils aged 4-18. If any pupils would like to submit their artwork they can do this before 4th March 5pm. The link is <https://youngartists.royalacademy.org.uk/>



Proud to be a  
**Schools North East**  
Partner School





### Word of the Week:

**Resolute-** to be determined and committed to something

### Stars of the Week:

Y5 - Matilda H, Harry R, Jack C, Max Mc

Y6 - Alice C, Gracie H, Jack R, Noah T, Esther B, Harrison P, James B

Y7 - Alexa W

Y8 - Mya D

### **Attendance**

Please remember to call in or send a message via MCAS if your child is unwell and will not be attending school by 8:30am. It is important that we have evidence for each day your child is absent, even if they were sent home the previous day.

**To report an absence via telephone call please dial 0191 2370629, select 4 for Seaton Sluice Middle School, then select 8 to report a student absence.**

Please send evidence of medical/dental appointments/medication to [ssms@svf.org.uk](mailto:ssms@svf.org.uk) so we can attach these to your child's profile on our system.

If you are submitting a Leave of Absence request, please ensure any documentation supporting the exceptional circumstances is handed in at the same time as the Leave of Absence form.



**This week's whole school attendance (YTD): 92.0%**

Year 5	Year 6	Year 7	Year 8
94.7%	94.3%	90.3%	89.3%

**The current best attending class is: 5 North**

### **Dates for the diary:**

19.1.26 - Space Club for Y5 and Y6 pupils at 3.30pm-4.30pm

20.1.26 - KS2 Parents' Evening (sign up via the APP)

28.1.26 - KS2 Parents' Evening (sign up via the APP)

### **Social Media Channels**

Don't forget to keep up to date with everything else on our social media channel.



Proud to be a  
**Schools North East**  
Partner School



[https://www.instagram.com/seaton\\_sluice\\_middle/](https://www.instagram.com/seaton_sluice_middle/)

Facebook - @Seaton Sluice Middle School

Links to external agencies are provided in good faith. We do not take any responsibility for the content of these links.



Proud to be a  
**Schools North East**  
Partner School

