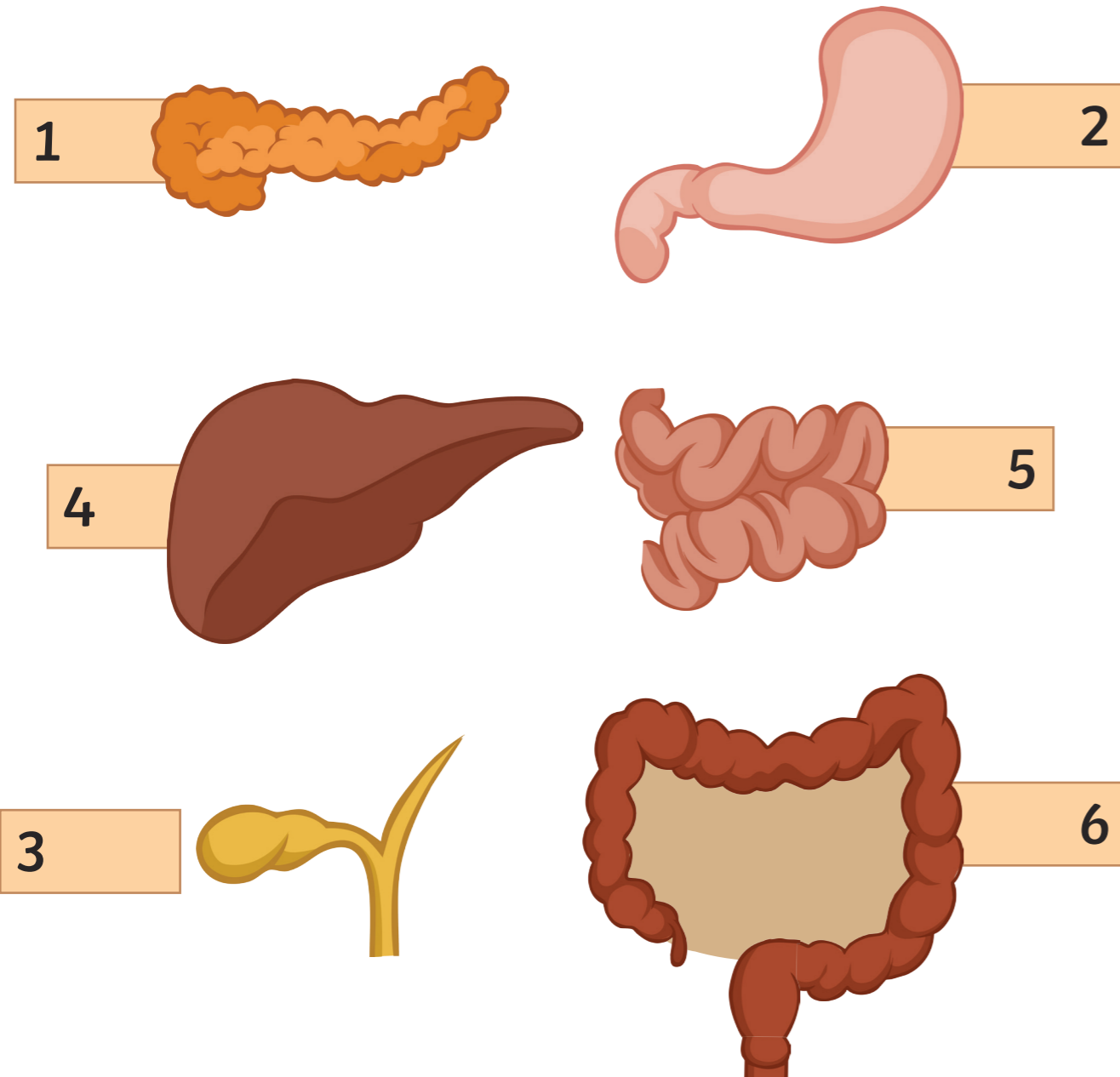


The Human Digestive System

1. Cut out the organs below and stick them by their tabs into the correct positions on the human body. Stick the tabs down in their numbered order.
2. Then cut out the labels and match them to each part of the digestive system.
3. Join your labels to the diagram with a ruled line.
4. Finally, cut out and match the functions to each part of the digestive system.



- gall bladder
- large intestine
- salivary glands
- oesophagus
- stomach
- pancreas
- small intestine
- rectum
- mouth
- liver
- anus

This part of the body links the mouth and the stomach. Food is moved via a process called peristalsis.

Any parts of the food which can't be digested are stored here as faeces, before being excreted via the anus.

The food is mixed with enzymes and acid here. It is mixed around and churned up by the strong muscles.

This is where the enzymes are produced. The three main enzymes are protease, carbohydrase and lipase.

This is where the food is absorbed into the bloodstream and taken to the parts of the body.

This is where digestion begins. The teeth work to break the food apart and saliva contains enzymes.

This is where bile is produced, to break down the fats and to neutralise any acid in the food.

This is the part of the digestive system where the water is reabsorbed from the digesting food.

The Human Digestive System

