



# WHYTRIG MIDDLE SCHOOL NEWSDROP

Week Ending 3rd October 2025

## Parents Evening

Our first parents evening of the year is taking place on Monday 13th October. Booking opened today on the 'parent's evening' section MCAS app. This will give you the opportunity to meet your child's form teacher for this academic year and discuss how the term has started. We will also be running some short tours of the new site on parents evening, which can be booked through the 'clubs' section of the MCAS app. Please note that spaces for the tours are limited and must be booked in advance.

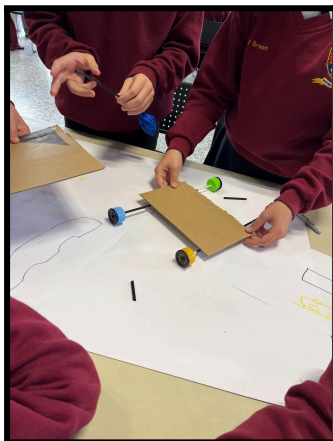
Please note that Ms Thompson will be taking all of Mrs Lawton's Meetings (7L).

## Year 7 Visit Nissan

On Monday 29th September, our Year 7 pupils visited Nissan Sunderland to take part in an exciting *Engineering Discovery* event. During the visit, they worked as engineers to design, build, and improve their own balloon-powered cars. This hands-on challenge gave pupils the chance to problem-solve, test ideas, and think creatively, just like real engineers.

The pupils were also given a fascinating tour of the Trim and Chassis Plant, where they were able to see first-hand how cars are carefully assembled from individual parts on the production line.

The visit gave our pupils a valuable insight into the wide range of careers available at Nissan and within the wider engineering and automotive industry. It was a thoroughly enjoyable and inspiring day, and we were proud of the enthusiasm and teamwork shown by our Year 7s throughout the trip.



Proud to be a  
**Schools North East**  
Partner School



## Open Evening Success

Our recent Open Evening was a wonderful success, with a fantastic turnout. We were delighted to receive so many positive comments about our new school building, our welcoming atmosphere, engaging activities, and the warm sense of community throughout the school. A special mention must go to our pupils, who were brilliant ambassadors - guiding tours, sharing their experiences, and interacting with visitors with pride and confidence. Thank you to everyone who joined us and helped make the evening such a success.

## Autumn 1 - Dates for your Diary



- W/C Monday 6th October - Mental Health Week
- Wednesday 8th- Friday 10th October - Year 5 Residential Visit
- Monday 13th October - Whole school Parent Evening (4 to 7pm)
- W/C Monday 13th October - Year 6 Bikeability (selected pupils)
- Friday 17th October - Wear Red Day (supporting Show Racism The Red Card)
- W/C Monday 27th October - Autumn half term holiday
- Monday 3rd November - Start of Autumn 2 ½ term

## Stars of the Week

Our Stars of the Week are nominated each week by staff for a variety of reasons, which might be contribution to the school community, school work or something outstanding. Each week their success is shared in school in the Star of the Week video and they receive a certificate and chocolate bar.

Week ending 3/10/25:

5C: Jackson H; 5K: Jessica H; 5L: Amelia E;  
6E: Lewis H; 6F: Flynn W; 6S: Harrison C;  
7H: Ross S; 7L: Emily T; 7W: Kaitlin H;  
8K:; 8Ro: William B; 8Ru:Isla H;  
Head of School SOTW: Maya G (8Ro)

## Music Tuition

Did you know that we work with Side by Side Arts to provide music tuition in school?

Tuition is available to all year groups in singing, guitar, piano and drums. If you are interested in your child taking part in music tuition in school, please complete the following form to register interest: [Register Interest for Music Tuition](#).

More information about Side by Side Arts can be found on their [website](#)

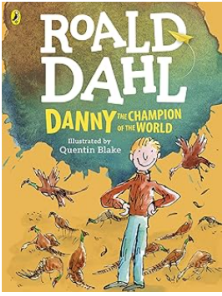


Proud to be a  
**Schools North East**  
Partner School



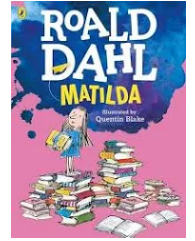
## Book of the Week

Every week, we will be highlighting one of our fantastic new Reading Challenge books. This week's book is **'Danny, the Champion of the World'** by **Roald Dahl** from our Year 5 challenge.



**Danny, the Champion of the World** is about a 9-year-old boy named Danny who lives with his father, William, in a gypsy caravan and helps him run a car repair shop. Danny's life of adventure and camaraderie with his father is shaken when he learns William is a pheasant poacher. To get revenge on the cruel and greedy landlord, Mr. Hazell, Danny and William devise a daring plan, using sleeping pills in raisins to poach all of Hazell's pheasants before a major hunting party, ultimately earning Danny the title of "Champion of the World"

If you liked **'Danny, the Champion of the World'** try ... **'Matilda'** or **'The BFG'** available to borrow from Mrs Harland, Mrs Campbell and the school library.



## Job of the Week

This week's Job of the Week is **Anesthetist**. The video can be found in Google Classroom and also [here](#).



We encourage you to watch the Job of the Week with your children so you can take part in the discussions we are having in school about future education and work.

If any parents or carers would like to get involved in our Careers provision at Whytrig please contact Mrs Campbell at [wms@svf.org.uk](mailto:wms@svf.org.uk)



## Netball

Well done to all the netballers who played in their first tournament match yesterday.

## Extra Curricular Clubs in this Half-Term

Tues- Netball- Mrs Harland (Sportshall/yard)

Thurs- Boys' Football- Mr Robinson. Girls' Football (Mrs Kelly) - please bring correct boots for 4G and trainers in case it rains. Shin-pads are also needed.

If you would like to sign your child up to football, please follow this link:

<https://forms.gle/89kGSTqCE8Kg6Rxr8>



INFLUENCING  
SUPPORTING &  
CONNECTING



Proud to be a  
**Schools North East**  
Partner School



## Breakfast Club

Breakfast Club runs from 8:00am each morning for children who have been signed up for it. Children should enter the school through the main reception door, where they will be taken to the breakfast club room in room G07, which is very close to the main reception and staff by Mrs Robson and Miss Gales. Children are able to have their breakfasts with a selection of food available.

We do however also provide a free bagel to any child in school on a morning who would like one, once the general population has entered our site from 8:30am!

## Road Safety

The safety of all children attending our school is our main priority. If your child is making their own way to and from school, please reinforce with them at home, as we will in school, to take care on their daily journeys. Astley Road is a very busy road. There are 3 traffic light crossings placed along this road near the school, including the brand new one opposite the new cafe on the corner of Prospect Avenue. Children are expected to use these traffic light crossings to cross the road. They must wait for the lights to turn red and then cross the road after checking it is safe to do so.

We actively encourage children to walk, cycle or scoot to school. Children who travel to school on bikes must ensure that they ride in a safe manner. This includes not riding in the middle of roads and pulling wheelies. When they come on to the school site they must dismount and push their bikes on our site, around the sports block and to the cycle store nearest our school. Pupils must also push their bikes/scooters off the school site at the end of the school day. Children have been told that they should not be riding out of school on the road in the turning circle because of the one way system in place. Please support school and your child's safety by reaffirming these expectations at home.

**Double parking puts our children at risk. When double parking occurs around schools, it makes it harder to see children and those who might be on wheels (buggies, cycles, wheelchairs etc).**

As a driver you have a responsibility to park in a safe and considerate manner.

Park with care and help make the area near and around our school a safer place for everyone.

**Fewer cars at the school entrance will help make it safer for everyone**

**What you could do instead....**

- ✓ Try walking, cycling or scooting – even if its just one day a week, it can make a big difference.
- ✓ If you need to drive your child to school, consider parking away from school and walking the remainder of the way or car share with other families.



**Walking, cycling or scooting** to school contributes to the recommended daily physical exercise for you and your children.

It also helps to **reduce congestion** around school and **improves air quality**, providing benefits for everyone.



**Northumberland**  
County Council

**Schools**  
**GoSmarter**



INFLUENCING  
SUPPORTING &  
CONNECTING



2024-27

**SCHOOL**  
**MENTAL**  
**HEALTH**  
**AWARD**

Proud to be a  
**Schools North East**  
Partner School





## Attendance

Please remember to call in to the Middle School attendance line or send a message via MCAS if your child is unwell and will not be attending school by 8:30am. It is important that we have evidence for each day your child is absent, even if they were sent home the previous day.

To report an absence via telephone call please dial 0191 2371402, select 5 for Whytrig Middle School then select 8 to report a student absence.

Please also send evidence of medical/dental appointments/medication to [wms@svf.org.uk](mailto:wms@svf.org.uk) so we can attach these to your child's profile on our system.

If you are submitting a Leave of Absence request please ensure any documentation supporting the exceptional circumstances is handed in at the same time as the Leave of Absence form.



### This week's whole school attendance (YTD):

Year 5	Year 6	Year 7	Year 8
98.3%	93.9%	94.3%	91.9%

Current best attending class is: 5K (99.1%)

## Lunch Account Balance

Please check your child's lunch account balance, and top up as necessary.

We will never allow your child to go hungry, and should they not have enough money on their account then we will ensure they are able to buy a Main Meal Deal by granting them a temporary overdraft for that day of £2.60. You will then receive a message via MCAS advising you that you need to top up their account.

This temporary overdraft facility will not be extended for additional days and should your child not have enough funds in their account the following day they will only be provided with a basic sandwich and drink. Our expectation is that you will top their account up immediately so they have a positive balance again.

## Labelling Uniform and Belongings

All items of clothing, bags and water bottles etc. should have your child's name in them. This helps us return 'lost property' to their rightful owner. By the end of each term, we have a large quantity of items that have lost their owner and are then donated to charity or unfortunately thrown away.



Proud to be a  
**Schools North East**  
Partner School



### Lockers

Replacement keys are now £4, if your child loses their key they must pay £4 for a replacement.

Year 6 - locker key rental is £5, payable via MCAS.

### MCAS Contact Details

Please remember to double check that your details are correct on MCAS. When you make a change in My Child At School, it updates the systems that we use to contact home. This also means that we don't make a mistake in the spelling of an email address or taking down a number incorrectly.

### Social Media Channels

Don't forget to keep up to date with everything else on our social media channels

X - @WhytrigMS

Facebook - @Whytrig Middle School

Links to external agencies are provided in good faith. We do not take any responsibility for the content of these links.



Proud to be a  
**Schools North East**  
Partner School

