



WHYTRIG MIDDLE SCHOOL NEWSDROP

Week Ending 5th September 2025

Welcome Back

Welcome back to a very new academic year at Whytrig Middle School. On Wednesday, we were delighted to welcome back Years 5 and 6 at staggered starts in the morning to our new school at Prospect Avenue. The children settled in really well and were a credit to themselves with a lot of information to take in! We were able to give tours of our new site, including our amazing sports complex, work on routines and end the day with a Key Stage assembly. It was lovely to see them in school and to hear all about their summer. On Thursday, Years 7 and 8 also joined Years 5 and 6 with the same staggered start and format to their day, with site tours, information sharing and an assembly. They all seem to have been impressed with their new school, classrooms and facilities and hopefully they have been able to share this with you at home too. Today, we have had our first full day on timetable, with children starting to move more around the site. Next week we will start our first full week on timetable, so please ensure children bring PE kits on PE days. Over the coming weeks we will work hard on routines and processes as we get to know our new site. We have asked the children to be patient as we work through this together, and we would respectfully ask parents and carers to please be patient too. Please let us know about any issues or concerns you may have, but please also bear in mind that we only took ownership of the site and building in the last week of the holidays and our time in school so far has been mainly focused on unpacking the furniture and resources and making the school ready for the children to return this week. There will undoubtedly be teething issues as we get to grips with the new school, especially as it is quite different to what we had at Elsdon Avenue. But it means our children now have a much better offer and can come to school each day to learn in the first class environment that they deserve! We are very much looking forward to the year ahead and working with you and your child(ren) and we can't wait to be able to invite you all in to see the new school. Thank you for your continued support.

Breakfast Club

Breakfast Club will start on Monday 8th September for children who have been signed up for it. Breakfast Club runs from 8:00am each morning. Children should enter the school through the main reception door, where they will be taken to the breakfast club room in room G07, which is very close to the main reception and staff by Mrs Robinson and Ms Gales.

Autumn 1 - Dates for your Diary

- Wednesday 17th September - KS3 Careers workshop BAE Systems
- Monday 29th September - Year 7 Nissan Visit (details in the MCAS app)
- Wednesday 5th- Friday 7th October - Year 5 Residential Visit
- W/C Monday 13th October - Year 6 Bikeability (selected pupils)
- W/C Monday 27th October - Autumn half term
- Monday 3rd November - Start of Autumn 2 ½ term

*Save
the
Date*

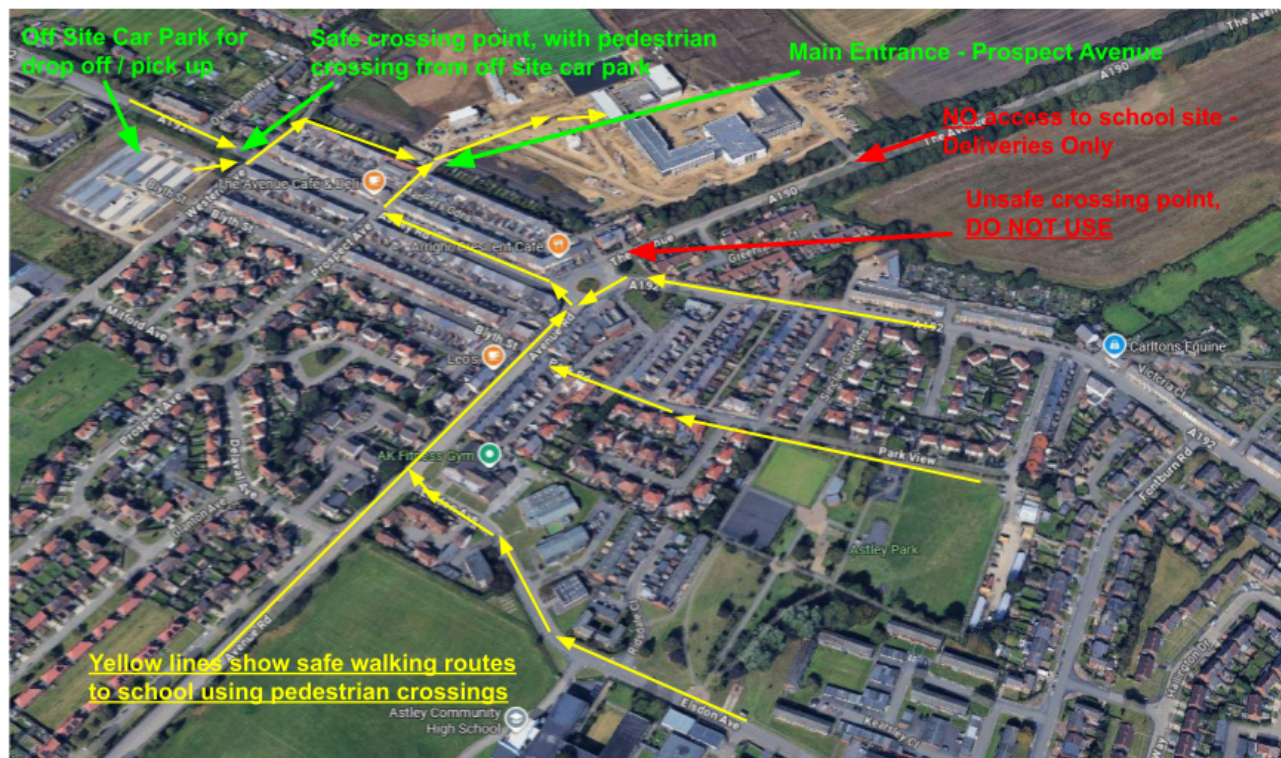


Proud to be a
Schools North East
Partner School



Access to the Prospect Avenue Site

Now that we are up and running at our new site, we would just like to take this opportunity to remind parents, carers and children again about the routes to school, so that everyone can have a safe journey each day. We really need everyone's support with this in order to ensure everyone is kept safe. The map below, which was previously sent out in August, details the school main entrance, off site parking and walking route to school (green), safe walking routes to school using pedestrian crossings (yellow) and places where there is no access and where children should not cross (red).



Please also help us to ensure consideration is shown to those who neighbour our new school site. There are residents and businesses close to the Prospect Avenue entrance onto the school site and balancing students entering and exiting the site with our neighbours accessing their premises requires care and vigilance from everyone.

We ask that everyone respects the double yellow and zig zag line markings in the vicinity of our schools and car parks. Parking on the main Prospect Avenue site (the “on-site car park”) is limited to staff and official visitors.

Parents/carers are asked to use the off-site car park to drop off and pick up their children. There is a safe accessible route into school from this car park as can be seen from the above map.

The on-site car park must not be used as a drop off or pick up at any point during or outside of the school day, unless in exceptional circumstances and with prior approval from the relevant Head of School (Mr Souter for Whytrig Middle or Mr Goodman for Seaton Valley High School). Vehicle access to the on-site car park is controlled by an intercom and secure gate.

Community users of our sports facilities (e.g. clubs and classes, sports halls, football pitches, courts and the 3G all-weather pitch) are also expected to use the off-site car park.

We thank you for your support and consideration in this matter and the start of the first of many academic years on our new site.

Safety Outside Our School

Double parking puts our children at risk. When double parking occurs around schools, it makes it harder to see children and those who might be on wheels (buggies, cycles, wheelchairs etc).

As a driver you have a responsibility to park in a safe and considerate manner.

Park with care and help make the area near and around our school a safer place for everyone.

Fewer cars at the school entrance will help make it safer for everyone

What you could do instead....

- ✓ Try walking, cycling or scooting – even if its just one day a week, it can make a big difference.
- ✓ If you need to drive your child to school, consider parking away from school and walking the remainder of the way or car share with other families.



Walking, cycling or scooting to school contributes to the recommended daily physical exercise for you and your children.

It also helps to **reduce congestion** around school and **improves air quality**, providing benefits for everyone.



Road Safety

The safety of all children attending our school is our main priority. If your child is making their own way to and from school, please reinforce with them at home, as we will in school, to take care on their daily journeys. Astley Road is a very busy road. There are 3 traffic light crossings placed along this road near the school, including the brand new one opposite the new cafe on the corner of Prospect Avenue. Children are expected to use these traffic light crossings to cross the road. They must wait for the lights to turn red and then cross the road after checking it is safe to do so.

We actively encourage children to walk, cycle or scoot to school. Children who travel to school on bikes must ensure that they ride in a safe manner. This includes not riding in the middle of roads and pulling wheelies. When they come on to the school site they must dismount and push their bikes on our site, around the sports block and to the cycle store nearest our school. Pupils must also push their bikes/scooters off the school site at the end of the school day.



Proud to be a
Schools North East
Partner School



Mental Health Tip - Back to School

Going back to school can bring up lots of feelings. You might be happy to go back, wish you were still at home or want to be somewhere else completely. If you're going back after being off from the holidays or for any other reason, you might be worried about a number of things. This year especially with all the changes involved with the move to our new site pupils in all year groups, whether they are new starters to the school or were at Elsdon Avenue last year, may be feeling a little overwhelmed this week, with so much to take in. The Childline website at www.childline.org.uk offers tips and suggestions for going back to school and to help everyone to prepare:

- Write down your worries and hopes
- Ask questions
- Prepare yourself for going back
- Use the mood journal
- Take your time

Click <https://www.childline.org.uk/info-advice/school-college-and-work/school-college/school/> to find out more.

Extra Curricular Clubs in this Half-Term

Extra Curricular clubs will start on the week commencing Monday 15th September. We will send out a timetable when the activities for this half term are confirmed. Homework Club will however commence on Monday 8th September.

Job of the Week

This week's Job of the Week is Wellsite Geologist. The video can be found in Google Classroom and also [here](#).

We encourage you to watch the Job of the Week with your children so you can take part in the discussions we are having in school about future education and work.

If any parents or carers would like to get involved in our Careers provision at Whytrig please contact Mrs Campbell at wms@svf.org.uk



Attendance

Please remember to call in or send a message via MCAS if your child is unwell and will not be attending school by 8:30am. It is important that we have evidence for each day your child is absent, even if they were sent home the previous day.

Please also send evidence of medical/dental appointments/medication to wms@svf.org.uk so we can attach these to your child's profile on our system.

If you are submitting a Leave of Absence request please ensure any documentation supporting the exceptional circumstances is handed in at the same time as the Leave of Absence form.



Proud to be a
Schools North East
Partner School



This week's whole school attendance (YTD): 96.9%

Year 5	Year 6	Year 7	Year 8
99.3%	94.0%	98.9%	96.3%

Current best attending classes are: 5K, 5L, 6S, 7L, 7W and 8Ro all with 100% this week!!

Lunch Account Balance

Please check your child's lunch account balance, and top up as necessary.

We will never allow your child to go hungry, and should they not have enough money on their account then we will ensure they are able to buy a Main Meal Deal by granting them a temporary overdraft for that day of £2.60. You will then receive a message via MCAS advising you that you need to top up their account.

This temporary overdraft facility will not be extended for additional days and should your child not have enough funds in their account the following day they will only be provided with a basic sandwich and drink. Our expectation is that you will top their account up immediately so they have a positive balance again.

Prime Minister's letter on Best Start in Life

Keir Starmer, the Prime Minister, has written a letter to all parents and carers as we start the new term which can be read online here at

<https://educationhub.blog.gov.uk/2025/09/prime-ministers-letter-to-parents-and-carers-on-best-start-in-life/>

Library Books

Please can you take a look around your home and see if you have any outstanding library books. We're missing quite a few books from our collection and we want to have a refresh now we are in the the new school. Fiction books will often have a Green or Yellow Star on the spine so you can identify them as a school book.

Labelling Uniform and Belongings

All items of clothing, bags and water bottles etc. should have your child's name in them. This helps us return 'lost property' to their rightful owner. By the end of each term, we have a large quantity of items that have lost their owner and are then donated to charity or unfortunately thrown away.



Proud to be a
SchoolsNorth East
Partner School



MCAS Contact Details

Please remember to double check that your details are correct on MCAS. When you make a change in My Child At School, it updates the systems that we use to contact home. This also means that we don't make a mistake in the spelling of an email address or taking down a number incorrectly.

Social Media Channels

Don't forget to keep up to date with everything else on our social media channels

X - @WhytrigMS

Facebook - @Whytrig Middle School

Links to external agencies are provided in good faith. We do not take any responsibility for the content of these links.



Proud to be a
Schools North East
Partner School

