



“Let your light shine before others”

Matthew 5 v 16

The following policy is reflective of our deeply held Christian Vision and Values .

Vision

We are committed to creating a safe, happy and enriching environment where we all aspire to thrive, achieve and celebrate success together.

Our aim is to promote the dignity and well-being of every child and staff member and ensure they flourish in the course of their journey with us.

Values

Our core Christian values of Hope, Wisdom , Community and Joy underpin all that we strive to achieve to enable our ‘light to shine before others’ Matthew 5 v 16

Complaints Procedure

Contents

1. Aims	2
2. Legislation and guidance	2
3. Definitions and scope	2
4. Roles and responsibilities	3
5. Principles for investigation	4
6. Stages of complaint (not complaints against the headteacher or trustees)	5
7. Complaints against the headteacher, a trustee or the trust board	7
8. Referring complaints on completion of the school’s procedure	7
9. Persistent complaints	8
10. Record keeping	9
11. Learning lessons	9
12. Monitoring arrangements	10

Responsible Committee:	Full Trust Board
Date Last Reviewed:	July 2024
Due to be Reviewed:	July 2027
Statutory Policy:	Published on the Web Site

1. Aims

Our school aims to meet its statutory obligations when responding to complaints from parents of pupils at the school, and others.

When responding to complaints, we aim to:

- › Be impartial and non-adversarial
- › Facilitate a full and fair investigation by an independent person or panel, where necessary
- › Address all the points at issue and provide an effective and prompt response
- › Respect complainants' desire for confidentiality
- › Treat complainants with respect and courtesy
- › Ensure that any decisions we make are lawful, rational, reasonable, fair and proportionate, in line with the principles of administrative law
- › Keep complainants informed of the progress of the complaints process
- › Consider how the complaint can feed into school improvement evaluation processes

We try to resolve concerns or complaints by informal means wherever possible. Where this is not possible, formal procedures will be followed.

The school will aim to give the complainant the opportunity to complete the complaints procedure in full.

To support this, we will ensure we publicise the existence of this policy and make it available on the school website.

Throughout the process, we will be sensitive to the needs of all parties involved, and make any reasonable adjustments needed to accommodate individuals.

Under the Equality Act 2010 we have a duty not to discriminate against people on the basis of their age, disability, gender, gender identity, pregnancy or maternity, race, religion or belief and sexual orientation.

This policy has been equality impact assessed and we believe that it is in line with the Equality Act 2010 as it is fair, it does not prioritise or disadvantage any pupil or member of staff and it helps to promote equality at this school.

2. Legislation and guidance

This document meets the requirements set out in part 7 of the schedule to [the Education \(Independent School Standards\) Regulations 2014](#), which states that we must have and make available a written procedure to deal with complaints from parents of pupils at the school.

It is also based on guidance published by the Education and Skills Funding Agency (ESFA) on [creating a complaints procedure that complies with the above regulations](#), and refers to [good practice guidance on setting up complaints procedures](#) from the Department for Education (DfE).

This policy complies with our funding agreement and articles of association.

3. Definitions and scope

3.1 Definitions

The DfE guidance explains the difference between a concern and a complaint:

- › A **concern** is defined as “an expression of worry or doubt over an issue considered to be important for which reassurances are sought”
- › A **complaint** is defined as “an expression of dissatisfaction however made, about actions taken or a lack of action”

Responsible Committee:	Full Trust Board
Date Last Reviewed:	July 2021
Due to be Reviewed:	July 2024
Statutory Policy:	Published on the Web Site

3.2 Scope

The school intends to resolve complaints informally where possible, at the earliest possible stage.

There may be occasions when complainants would like to raise their concerns formally. This policy outlines the procedure relating to handling such complaints.

This policy does **not** cover complaints procedures relating to:

- › Admissions
- › Statutory assessments of special educational needs (SEN)
- › Exclusion
- › Whistle-blowing
- › Staff grievances
- › Staff discipline

Please see our separate policies for procedures relating to these types of complaint.

Arrangements for handling complaints from parents of children with special educational needs (SEN) about the school's support are within the scope of this policy. Such complaints should first be made to the SENDCo/Headteacher; they will then be referred to this complaints policy. Our SEN policy and information report includes information about the rights of parents of pupils with disabilities who believe that our school has discriminated against their child.

Complaints about services provided by other providers who use school premises or facilities should be directed to the provider concerned.

4. Roles and responsibilities

4.1 The complainant

The complainant will get a more effective and timely response to their complaint if they:

- › Follow these procedures
- › Co-operate with the school throughout the process, and respond to deadlines and communication promptly
- › Ask for assistance as needed
- › Treat all those involved with respect
- › Not publish details about the complaint on social media

4.2 The investigator

An individual will be appointed to look into the complaint, and establish the facts. They will:

- › Interview all relevant parties, keeping notes
- › Consider records and any written evidence and keep these securely
- › Prepare a comprehensive report to the headteacher or complaints committee which includes the facts and potential solutions

4.3 Clerk to the trust board

The clerk will:

- › Be the contact point for the complainant and the complaints committee, including circulating the relevant papers and evidence before complaints committee meetings
- › Arrange the complaints hearing

Responsible Committee:	Full Trust Board
Date Last Reviewed:	July 2021
Due to be Reviewed:	July 2024
Statutory Policy:	Published on the Web Site

- › Record and circulate the minutes and outcome of the hearing

4.4 Committee chair

The committee chair will:

- › Chair the meeting, ensuring that everyone is treated with respect throughout
- › Make sure all parties see the relevant information, understand the purpose of the committee, and are allowed to present their case

5. Principles for investigation

When investigating a complaint, we will try to clarify:

- › What has happened
- › Who was involved
- › What the complainant feels would put things right

5.1 Time scales

The complainant must raise the complaint within 3 months of the incident. If the complaint is about a series of related incidents, they must raise the complaint within 3 months of the last incident.

We will consider exceptions to this time frame in circumstances where there were valid reasons for not making a complaint at that time and the complaint can still be investigated in a fair manner for all involved.

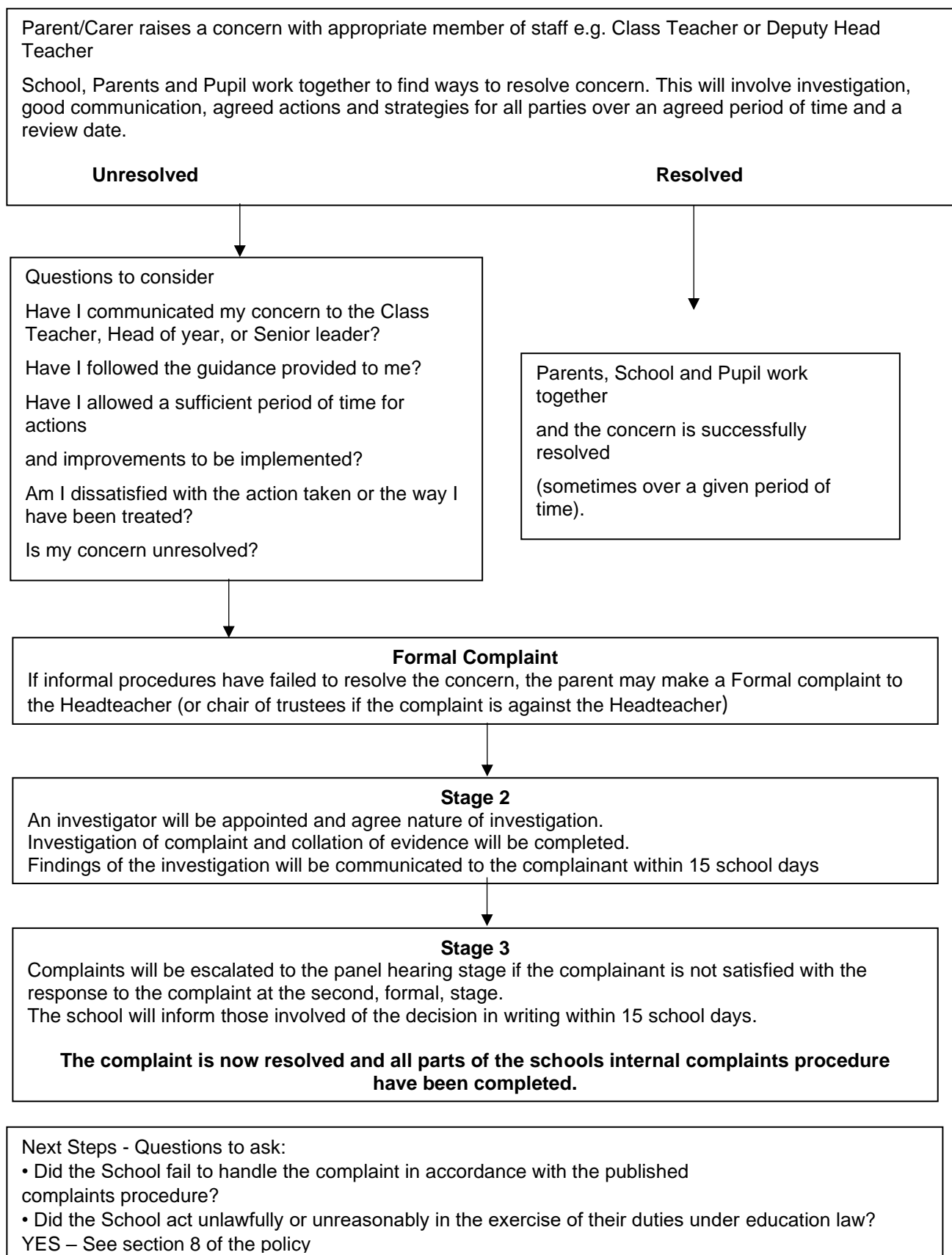
When complaints are made out of term time, we will consider them to have been received on the first school day after the holiday period.

If at any point we cannot meet the time scales we have set out in this policy, we will:

- › Set new time limits with the complainant
- › Send the complainant details of the new deadline and explain the delay

Responsible Committee:	Full Trust Board
Date Last Reviewed:	July 2021
Due to be Reviewed:	July 2024
Statutory Policy:	Published on the Web Site

5.2 Complaints policy flow chart



Responsible Committee: Full Trust Board
Date Last Reviewed: July 2021
Due to be Reviewed: July 2024
Statutory Policy: Published on the Web Site

6. Stages of complaint (not complaints against the headteacher or trustees)

6.1 Stage 1: informal

The school will take informal concerns seriously and make every effort to resolve the matter quickly. It may be the case that the provision or clarification of information will resolve the issue.

The complainant should raise the complaint as soon as possible with the relevant member of staff or the headteacher, either in person or by letter, telephone or email. Complainants should only raise the concern directly to the chair of Trustee where stages 1 and 2 have been fully complete and the outcome is unacceptable or where the complaint is against the Headteacher or Trustees. If the complainant is unclear who to contact or how to contact them, they should contact the school office on 01373 462798 or selwoodacademy@selwood-academy.co.uk.

The school will acknowledge informal complaints within 2 school days, and investigate and provide a response within 15 school days.

The informal stage will involve a meeting between the complainant and the headteacher (or the subject of the complaint if appropriate).

If the complaint is not resolved informally, it will be escalated to a formal complaint.

6.2 Stage 2: formal

Before you make a formal complaint and to help ensure that you have completed the informal school procedures (stage 1), it is recommended that you ask the following questions:

- Have I communicated my concern or worry to the Class Teacher, Head of year or Senior leaders?
- Have I followed the guidance provided to me?
- Have I allowed a sufficient period of time for actions and improvements to be implemented?
- Am I dissatisfied with the action taken or the way I have been treated?
- Is my concern unresolved?

If you answer yes to these questions then you may wish to make a formal complaint.

The formal stage involves the complainant putting the complaint to the headteacher and/or the subject of the complaint in a letter or email.

The complainant should provide details such as relevant dates, times and the names of witnesses of events, alongside copies of any relevant documents. The complainant should also state what they feel would resolve the complaint.

If complainants need assistance raising a formal complaint, they can contact the school office on 01373 462798 or selwoodacademy@selwood-academy.co.uk.

The person appointed by the headteacher for this purpose will then conduct their own investigation, after which recommendations made in the conclusion will be provided to the Headteacher. (Should the complaint be against the Headteacher, refer to section 7).

The written conclusion of this investigation will be sent to the complainant within 15 school days.

If the complainant is not satisfied with the response and wishes to proceed to the next stage of this procedure, they should inform the clerk to the trust board in writing within 5 school days.

Responsible Committee:	Full Trust Board
Date Last Reviewed:	July 2021
Due to be Reviewed:	July 2024
Statutory Policy:	Published on the Web Site

6.3 Stage 3: review panel

Complaints will be escalated to the panel hearing stage if the complainant is not satisfied with the response to the complaint at the second, formal, stage.

The panel will be appointed by or on behalf of the proprietor and must consist of at least 3 people who were not directly involved in the matters detailed in the complaint. At least 1 panel member must be independent of the management and running of the school. The panel cannot be made up solely of trust board members, as they are not independent of the management and running of the school.

The panel will have access to the existing record of the complaint's progress (see section 10).

The complainant must have reasonable notice of the date of the review panel; however, the review panel reserves the right to convene at their convenience rather than that of the complainant. At the review panel meeting, the complainant and representatives from the school, as appropriate, will be present. Each will have an opportunity to set out written or oral submissions prior to the meeting.

The complainant must be allowed to attend the panel hearing and be accompanied if they wish.

At the meeting, each individual will have the opportunity to give statements and present their evidence, and witnesses will be called, as appropriate, to present their evidence.

The panel, the complainant and the school representative(s) will be given the chance to ask and reply to questions. Once the complainant and school representative(s) have presented their cases, they will be asked to leave and evidence will then be considered.

The panel will then put together its findings and recommendations from the case. The panel will also provide copies of the minutes of the hearing and the findings and recommendations to the complainant and, where relevant, the individual who is the subject of the complaint, and make a copy available for inspection by the proprietor and headteacher.

The school will inform those involved of the decision in writing within 15 school days.

7. Complaints against the headteacher, a trustee or the trust board

7.1 Stage 1: informal

Complaints made against the headteacher or any member of the trust board should be directed to the clerk to the trust board in the first instance.

If the complaint is about the headteacher or one member of the trust board (including the chair or vice-chair), a suitably skilled and impartial trustee will carry out the steps at stage 1 (set out in section 6 above).

7.2 Stage 2: formal

If the complaint is jointly about the chair and vice-chair, the entire trust board or the majority of the trust board, an independent investigator will carry out the steps in stage 2 (set out in section 6 above). They will be appointed by the trust board or diocese, and will write a formal response at the end of their investigation.

7.3 Stage 3: review panel

If the complaint is jointly about the chair and vice-chair, the entire trust board or the majority of the trust board, a committee of independent trustees will hear the complaint. They will be sourced from local schools, the local authority, HR consultancy or diocese and will carry out the steps at stage 3 (set out in section 6 above).

8. Referring complaints on completion of the school's procedure

If the complainant is unsatisfied with the outcome of the school's complaints procedure, they can refer their complaint to the ESFA. The ESFA will check whether the complaint has been dealt with properly by the school. The ESFA will not overturn a school's decision about a complaint. However, it will look into:

- Whether there was undue delay, or the school did not comply with its own complaints procedure

Responsible Committee:	Full Trust Board
Date Last Reviewed:	July 2021
Due to be Reviewed:	July 2024
Statutory Policy:	Published on the Web Site

- › Whether the school was in breach of its funding agreement with the secretary of state
- › Whether the school has failed to comply with any other legal obligation

If the school did not deal with the complaint properly, it will be asked to re-investigate the complaint. If the school's complaints procedure is found to not meet regulations, the school will be asked to correct its procedure accordingly.

For more information or to refer a complaint, see the following webpage:

<https://www.gov.uk/complain-about-school>

We will include this information in the outcome letter to complainants.

9. Persistent complaints

9.1 Unreasonably persistent complaints

Most complaints raised will be valid, and therefore we will treat them seriously. However, a complaint may become unreasonable if the person:

- › Has made the same complaint before, and it's already been resolved by following the school's complaints procedure
- › Makes a complaint that is obsessive, persistent, harassing, prolific, defamatory or repetitive
- › Knowingly provides false information
- › Insists on pursuing a complaint that is unfounded, or out of scope of the complaints procedure
- › Pursues a valid complaint, but in an unreasonable manner e.g. refuses to articulate the complaint, refuses to co-operate with this complaints procedure, or insists that the complaint is dealt with in ways that are incompatible with this procedure and the time frames it sets out
- › Changes the basis of the complaint as the investigation goes on
- › Makes a complaint designed to cause disruption, annoyance or excessive demands on school time
- › Seeks unrealistic outcomes, or a solution that lacks any serious purpose or value

Steps we will take

We will take every reasonable step to address the complainant's concerns, and give them a clear statement of our position and their options. We will maintain our role as an objective arbiter throughout the process, including when we meet with individuals. We will follow our complaints procedure as normal (as outlined above) wherever possible.

If the complainant continues to contact the school in a disruptive way, we may put communications strategies in place. We may:

- › Give the complainant a single point of contact via an email address
- › Limit the number of times the complainant can make contact, such as a fixed number per term
- › Ask the complainant to engage a third party to act on their behalf, such as [Citizens Advice](#)
- › Put any other strategy in place as necessary

Stopping responding

We may stop responding to the complainant when all of these factors are met:

- › We believe we have taken all reasonable steps to help address their concerns
- › We have provided a clear statement of our position and their options
- › The complainant contacts us repeatedly, and we believe their intention is to cause disruption or inconvenience

Responsible Committee:	Full Trust Board
Date Last Reviewed:	July 2021
Due to be Reviewed:	July 2024
Statutory Policy:	Published on the Web Site

Where we stop responding, we will inform the individual that we intend to do so. We will also explain that we will still consider any new complaints they make.

In response to any serious incident of aggression or violence, we will immediately inform the police and communicate our actions in writing. This may include barring an individual from our school site.

9.2 Duplicate complaints

If we have resolved a complaint under this procedure and receive a duplicate complaint on the same subject from a partner, family member or other individual, we will assess whether there are aspects that we hadn't previously considered, or any new information we need to take into account.

If we are satisfied that there are no new aspects, we will:

- Tell the new complainant that we have already investigated and responded to this issue, and the process is complete
- Direct them to the ESFA if they are dissatisfied with our original handling of the complaint

If there are new aspects, we will follow this procedure again.

9.3 Complaint campaigns

Where the school receives a large volume of complaints about the same topic or subject, especially if these come from complainants unconnected with the school, the school may respond to these complaints by:

- Publishing a single response on the school website
- Sending a template response to all of the complainants

If complainants are not satisfied with the school's response, or wish to pursue the complaint further, the normal procedures will apply.

10. Record keeping

The school will record the progress of all complaints, including information about actions taken at all stages, the stage at which the complaint was resolved, and the final outcome. The records will also include copies of letters and emails, and notes relating to meetings and phone calls.

This material will be treated as confidential and held centrally, and will be viewed only by those involved in investigating the complaint or on the review panel.

This is except where the secretary of state (or someone acting on their behalf) or the complainant requests access to records of a complaint through a freedom of information (FOI) request or through a subject access request under the terms of the Data Protection Act, or where the material must be made available during a school inspection.

Records of complaints will be kept securely, only for as long as necessary and in line with data protection law, our privacy notices and records management.

The details of the complaint, including the names of individuals involved, will not be shared with the whole trust board in case a review panel needs to be organised at a later point.

Where the trust board is aware of the substance of the complaint before the review panel stage, the school will (where reasonably practicable) arrange for an independent panel to hear the complaint.

Complainants also have the right to request an independent panel if they believe there is likely to be bias in the proceedings. The decision to approve this request is made by the trust board, who will not unreasonably withhold consent.

11. Learning lessons

The Chair of Trustees will review any underlying issues raised by complaints with the headteacher/senior leadership team as appropriate, where appropriate, and respecting confidentiality, to determine whether there

Responsible Committee:	Full Trust Board
Date Last Reviewed:	July 2021
Due to be Reviewed:	July 2024
Statutory Policy:	Published on the Web Site

are any improvements that the school can make to its procedures or practice to help prevent similar events in the future.

12. Monitoring arrangements

The Resources Committee will monitor the effectiveness of the complaints procedure in ensuring that complaints are handled properly. The Resources Committee will track the number and nature of complaints, and review underlying issues as stated in section 11.

The complaints records are logged and managed by the Head's PA.

This policy will be reviewed by the full Trust board every 3 years.

Responsible Committee:	Full Trust Board
Date Last Reviewed:	July 2021
Due to be Reviewed:	July 2024
Statutory Policy:	Published on the Web Site