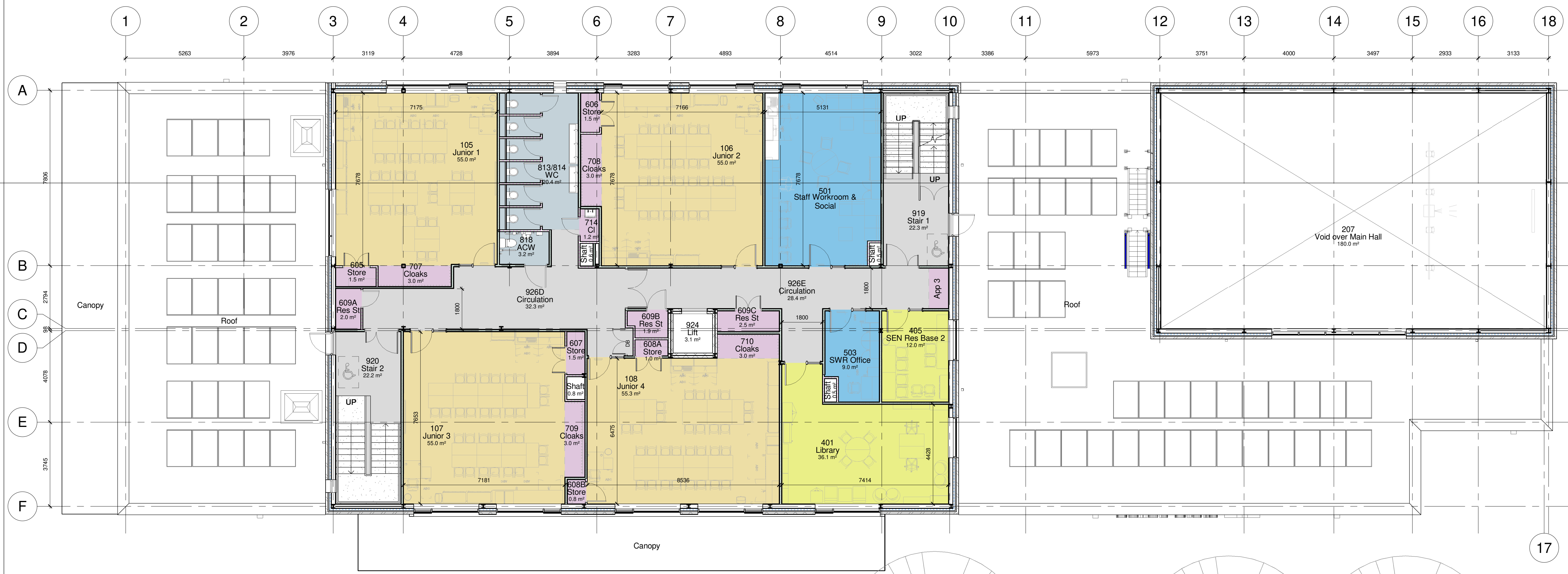
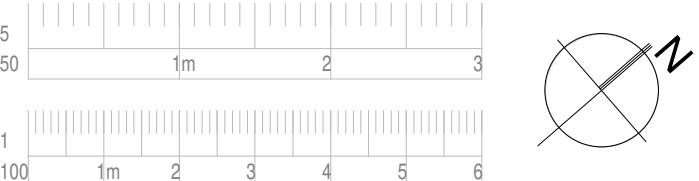


- Drawing not to be scaled
- Report Errors and Omissions to the Architect.
- Check all dimensions on site
- Drawing to be read in conjunction with the Health and Safety Plan and all relevant Risk Assessments



First Floor Plan
1 : 100

Level	Department	Room no.	ADS Code	Name	Area	SOA Area	Balance	Comment
00 GF Level	Non Teaching / Storage	923	CR13	Lift	3.1	4	-0.9	
00 GF Level	Staff Spcns	508	ADM02	Confidential Meeting / Interview	13.5	14	-0.5	
00 GF Level	Staff Spcns	509	ADM03	General Office	12.9	13	-0.1	
00 GF Level	Staff Spcns	502	ADM11	Head's Office	10.1	10	0.1	
00 GF Level	Staff Spcns	504/506	DF13/ADM04	Staff Workspaces / Repro	14.4	14	0.4	
00 GF Level	Staff Spcns	509	ADM03	First Aid Post	4.3	4	0.3	
00 GF Level	Staff Spcns	511	DF01	SEN Office	6.5	7	-0.5	
00 GF Level	Staff Spcns	510	ADM22	Nurse's Office (Nursery)	5.6	4	1.4	
00 GF Level	Non Teaching / Storage	507	ADM11	Waiting	10.3	11	-1.3	
00 GF Level	Non Teaching / Storage	517	CR12	Staircase 1	22.3	27	-4.7	
00 GF Level	Non Teaching / Storage	518	CR12	Staircase 2	24.9	27	-1.1	
00 GF Level	Specialist Teaching	201	PR121	Robot Science / DT Classroom	37.1	34	3.3	Access corridor to hall increased area
00 GF Level	Teaching	103	PR120	Infant 1 Classroom	62	62	0	
00 GF Level	Teaching	104	PR120	Infant 2 Classroom	62	62	0	
00 GF Level	Specialist Teaching	202	PR120	SEN Class 1 Classroom	48.4	48	1.4	Fatra area taken from corridor to improve entrance
00 GF Level	Specialist Teaching	203	PR120	SEN Class 2 Classroom	48.4	48	1.8	Fatra area taken from corridor to improve entrance
00 GF Level	Teaching	101	PR103	Nursery 1 Classroom	58.3	55	4.3	Fatra area due to reduction in size of hygiene room
00 GF Level	Teaching	102	PR113	Reception Classroom	62.8	62	0.8	Fatra area taken from corridor to improve entrance
00 GF Level	Non Teaching / Storage	819	TOC21	Publ Wc	3.3	0	3.3	Wc not in SOA but an adjacency diagram
00 GF Level	Non Teaching / Storage	817	TOC21	Visitor's Accessible Wc	2.5	3.5	-1	
00 GF Level	Non Teaching / Storage	816/8	TOC12	Staff Wc	2.4	3	-0.6	
00 GF Level	Non Teaching / Storage	816/4	TOC12	Staff Wc	2.4	3	-0.6	
00 GF Level	Non Teaching / Storage	901	PLA09	Head Room	34.9	38	-3.2	
00 GF Level	Non Teaching / Storage	915	PLA14	Server Room	10.3	10.2	0	
00 GF Level	Non Teaching / Storage	811	TOC14	Infants Wc	8.3	9	-0.8	
00 GF Level	Non Teaching / Storage	809	ET40	Kitchen Wc / Changing	2.8	3	-0.2	
00 GF Level	Non Teaching / Storage	801	KT02	Kitchen	40.6	42	-1.4	Space taken to enlarge Dry Store. Kitchen still large enough to serve no. of children
00 GF Level	Non Teaching / Storage	802	KT21	Kitchen Dry Store	3.2	2	1.2	Enlarged Dry Store to accommodate required shelving
00 GF Level	Non Teaching / Storage	807	TOC11	Sub Wc Early Years	9.1	9	0.1	
00 GF Level	Non Teaching / Storage	804	TOC11	Sub Wc Early Years	9.1	9	0.1	
00 GF Level	Non Teaching / Storage	810/811	TOC13	SEN WC	10.8	6	4.8	Circulation space added
00 GF Level	Non Teaching / Storage	815	TOC06	Hygiene	8	12	-4	Hygiene room reduced as requested by school
00 GF Level	Non Teaching / Storage	820		Kitchen Office	1.8	0	1.8	Additional room added in ITD
00 GF Level	Non Teaching / Storage	903		Distribution Board 1	0.3	1	-0.7	
00 GF Level	Large Spcns	901	HM13	Main Hall	196	189	0	
00 GF Level	Teaching Store	610	ST115	Teaching Resource Store 2	6.8	5	1.8	
00 GF Level	Teaching Store	611	ST115	Teaching Resource Store 3	5	5	0	
00 GF Level	Teaching Store	700/706	STN01	Infants Cloaks	8.5	6	2.5	Circulation space added
00 GF Level	Teaching Store	603	ST109	Classroom Store	1.5	1.5	0	
00 GF Level	Teaching Store	604	ST109	Classroom Store	1.5	1.5	0	
00 GF Level	Teaching Store	716	STN01	Equipment Store Maintenance 2	6	6	0	
00 GF Level	Teaching Store	713	STN01	Children's Store	1.7	5.5	-0.2	
00 GF Level	Teaching Store	612/4	STN04	PE Store	3.9	2.5	1.4	PE Store and furniture store swapped
00 GF Level	Teaching Store	613	STN05	Kit Store	4	6.5	-2.5	Change of report of school
00 GF Level	Teaching Store	701	STN15	Jump Store	15	7	8	PE Store and furniture store swapped
00 GF Level	Teaching Store	612/8	STN04	PE Store	4.8	2.5	2.3	PE Store and furniture store swapped
00 GF Level	Teaching Store	702	CR06	Apparelance Bay 1	1.6	1.5	0.1	
00 GF Level	Teaching Store	715	STN12	Equipment Store Maintenance 1	6	6	0	
00 GF Level	Teaching Store	605	ST101	Nursery Store	5	4	1	
00 GF Level	Teaching Store	602	ST103	Reception Store	3	3.5	-0.5	
00 GF Level	Teaching Store	703	CR06	Apparelance Bay 2	1.1	1.5	-0.4	
00 GF Level	Teaching Store	712	STN11	Jump Store Cloaks	8.2	8	0.2	
00 GF Level	Teaching Store	711/8	STN01	SEN Cloaks	1.5	1.5	0	Circulation space added
00 GF Level	Teaching Store	711/4	STN01	SEN Cloaks	1.6	1.5	0.1	
00 GF Level	Learning Resource	404	SEN02	SEN Resource Base 1	12	12	0	
00 GF Level	Learning Resource	402	SEN02	Medical Treatment Room	12	12	0	
00 GF Level	Learning Resource	409	RES00	Small Group Room	8.8	9	-0.2	
00 GF Level	Learning Resource	408	RES04	Large Group Rm	16	16	0	
00 GF Level	Learning Resource	407	RES01	Nursery Small Group Room	10.1	9	1.1	Fatra area due to reduction in size of hygiene room

00 GF Level	Non Teaching / Storage	924	CR13	Lift	3.1	4	-0.9	Size as manufacturer's requirements
00 GF Level	Staff Spcns	502	DF02	Staff Work Room & Social	39.8	34	4.8	
00 GF Level	Staff Spcns	503	DF02	Staff Work Room Office	9	8	1	
00 GF Level	Non Teaching / Storage	919	CR12	Staircase 1	22.3	27	-4.3	Stair width satisfies fire strategy
00 GF Level	Non Teaching / Storage	920	CR12	Staircase 2	22.4	27	-4.3	Stair width satisfies fire strategy
00 GF Level	Teaching	106	PR133	Junior 2 Classroom	55	55	0	
00 GF Level	Teaching	105	PR133	Junior 1 Classroom	55	55	0	
00 GF Level	Teaching	107	PR133	Junior 3 Classroom	55	55	0	
00 GF Level	Teaching	108	PR133	Junior 4 Classroom	55	55	0	
00 GF Level	Non Teaching / Storage	818	TOC21	Accessible Wc	3.2	3.5	-0.3	
00 GF Level	Non Teaching / Storage	813/814	TOC14	Infants Wc	20.4	18	2.4	
00 GF Level	Non Teaching / Storage	903	PLA05	Distribution Board 1	0.3	1	-0.7	
00 GF Level	Teaching Store	605	ST109	Classroom Store	1.5	1.5	0	
00 GF Level	Teaching Store	707	STN01	Cloaks	3	3	0	
00 GF Level	Teaching Store	604/4	ST115	Resource Store 1	2	2	0	
00 GF Level	Teaching Store	603/3	ST115	Resource Store 1	2.5	2	0.5	
00 GF Level	Teaching Store	714	STN01	Children's Store	1.5	1.5	0	
00 GF Level	Teaching Store	606/6	ST115	Resource Store 1	1.9	1	0.9	
00 GF Level	Teaching Store	709	STN01	Cloaks	3	3	0	
00 GF Level	Teaching Store	608/8	ST109	Classroom Store	0.8	0.5	0.3	
00 GF Level	Teaching Store	608/4	ST109	Classroom Store	1	1	0	
00 GF Level	Teaching Store	710	STN01	Cloaks	3	3	0	
00 GF Level	Teaching Store	607	ST109	Classroom Store	1.6	1.5	0.1	
00 GF Level	Teaching Store	708	STN01	Cloaks	3	3	0	
00 GF Level	Teaching Store	606	ST109	Classroom Store	1.6	1.5	0	
00 GF Level	Teaching Store	706	CR06	Apparelance Bay 3	1.6	1.5	0.1	
00 GF Level	Learning Resource	401	LIB01	School Library	36	20	16	Medical treatment room 2 deleted and 2m2 area added to library
00 GF Level	Learning Resource	405	SEN00	SEN Resource Base 2	12	12	0	
00 GF Level - 14					415.50	400.5	15	
00 B Level	Non Teaching / Storage	925	PLA07	Roof Access	3.25	30	-26.75	
00 GF Level	Non Teaching / Storage	926/4	CR00	Circulation	12.3			
00 GF Level	Non Teaching / Storage	926/2	CR00	Circulation	28.2			
00 GF Level	Non Teaching / Storage	926/8	CR00	Circulation	54.6			
00 GF Level	Non Teaching / Storage	926/0	CR00	Circulation	31.9			
00 GF Level	Non Teaching / Storage	926/6	CR00	Circulation	28.10			
00 GF Level	Non Teaching / Storage	926/1	CR00	Circulation	154.9	164.9	-10	Circulation space also used within classrooms and also w/c and cloak
00 GF Level	Void			Ventilation Shaft	0.80			
00 GF Level	Void			Ventilation Shaft	0.30			
00 GF Level	Void			Ventilation Shaft	0.60			
00 GF Level	Void			Ventilation Shaft	0.30			
00 GF Level	Void			Ventilation Shaft	0.30			
Total Room Areas					1555.25	1537.6	17.65	
GFA Ground Floor					1124			
GFA First Floor					497			
GFA Below Level					8			
GFA Total					1624	1605.5		

P01 11/16/22 AC Issued for DfE approval AT

Rev. Date Dm. Chkd.

BOWKER SADLER ARCHITECTURE

Hatherlow House | Hatherlow | Romley | Stockport | SK6 3DY
0161 406 7333 | office@bowker-sadler.co.uk | www.bowker-sadler.co.uk

Project
Seven Stars Primary

Client
Conlon Construction Ltd

Drawing
First Floor Plan

Scale Sheet Size Drawn Checked Date
1 : 100 @ A1 AT AC 11/12

Project No. Originator Zone Level Form Discipline Number Revision
SRP1078 -BSA - V1 - 01 - D - A - 0003 P01

Status
PLANNING