



# Curriculum Newsletter

Bramham Shadwell Federation  
Class 5 February – March 2020

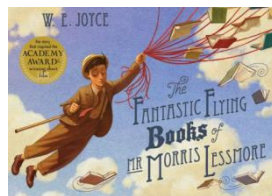
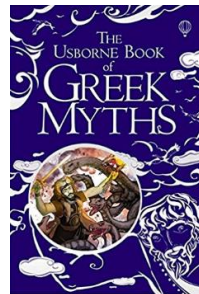


All our learning in class this half term will be focused around the question:

**How did people treat others in the past?**

## English

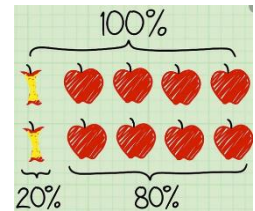
- The focus will be on grammar, punctuation and spelling activities linked to a range of books including **Greek Myths** linked to our history topic of Ancient Greece, and '**The Fantastic Flying Books of Mr Morris Lessmore**' by W.E.Joyce, which is linked to our SMSC of **Thinking of Others**.
- Children will explore the use of **parenthesis** to add detail to their sentences.
- Children will also explore the use of **reported and direct speech** which will lead them to write a **newspaper report** about the day Morris Lessmore discovered books.
- Children editing and improving their own work as they respond to their targets will be a continued focus.



**The outcome will be:** to write a newspaper report.

## Maths

- The focus will be learning about **fractions, decimals, percentages and angles of a shape**.
- Children will look at the representation of amounts as fractions, decimals and percentages using concrete resources.
- Children will compare and find equivalents across fractions, decimals and percentages. **E.g.  $1/5 = 0.2 = 20\%$**
- Children will compare, add, subtract and round to the nearest whole number and decimal point.
- The angles include: **acute, right, straight, obtuse and reflex**.
- The children will be identifying, measuring and drawing different angles and angles within a shape.
- They will continue to solve problems and learn to **explain, convince others and justify their findings** using specific vocabulary: ***I am certain that..., I think.... because..., I know that .... so ... must be ....***
- Additionally, the KIRF target is outlined below; please help your child to achieve this target.



### How can I help / information for helping What is parenthesis?

Parenthesis is additional information added into a sentence as an explanation or an afterthought; this can be a word, a phrase or a clause. Parentheses can be shown using two **brackets**, two **commas**, or two **dashes**. When a parenthesis is completely removed, the sentence is still grammatically correct. E.g. **Mr Morris Lessmore (who likes to help others) brings joy to all through the love of reading.**

### What is direct and indirect speech?

**Direct speech** is when the exact words spoken are reproduced in inverted commas (speech marks). **Indirect speech** is when the general points of what someone has said are reported, without the use of speech marks. It is sometimes called reported speech.

### How can I help / information for helping

Please help your child to learn their **times tables** as this increases mathematical confidence and accuracy. Look at decimal representations in the real world for example adding and subtracting money by paying at the shop or finding the correct change.

### KIRF Target – Spring Term 2 I can recall metric conversions.

Children should know the following facts:

- 1 kilogram = 1000 grams
- 1 kilometre = 1000 metres
- 1 metre = 100 centimetres
- 1 metre = 1000 millimetres
- 1 centimetre = 10 millimetres
- 1 litre = 1000 millilitres

The secret to success is practising **little and often**. Children should consider real life examples in which these conversions are used such as when baking or measuring liquids.

## Topic – (History)

**Focus:** our history topic this half term will focus on Ancient Greek life, their achievements and their influence on the Western world. We will study how people treated each other in Ancient Greece, which links to our SMSC of thinking of others. We will also compare this with how we treat each other in society today.



### Skills / Knowledge to be developed:

Historical enquiry will be developed through using a range of sources and artefacts to collect evidence and investigate how the Ancient Greek civilisation lived in comparison to our lives today. Historical interpretation will be developed through thoughtful discussion of how the Spartans are now regarded as brutal fighters but in Ancient Greek times, they were seen as heroic, brave and fierce. This links to our SMSC of thinking of others.

### Applied through:

Topic lessons, guided reading lessons based on Greek Myths.

### How can I help / information for helping

Discuss key vocabulary for our topic e.g. Parthenon, empire, chiton, myth and legend. Research causes of Greek wars and the impact that they have on today. Read and explore a range of Greek Myths and Legends.

## SITE

**Focus is:** Life cycles of different plants including fertilisation, dispersion and germination.

### Skills / knowledge to be developed:

We will begin the topic by identifying the parts of plants through dissecting. We will use this knowledge to understand how flowering plants reproduce using pollination and fertilisation considering seed dispersal.

### DT links:

Our SITE project will build on motor skills and hand-eye coordination to create a felt book using sewing skills, with the purpose of teaching a younger child about the life cycle of a plant by using a simplistic and attractive design.

### Computing links:

Children will use Kahoot! to frequently revisit their knowledge of plants and life cycles. Children will also develop their coding skills using Espresso Coding.



### How can I help / information for Helping

Discuss key vocabulary with your child including: carpel, germination, anther, filament, stigma, style, ovaries, reproduction, fertilisation, pollination, germination. Observe the growth of plants around the local area.

## P.E

### Focus:

P.E this half term will focus on orienteering, net and ball skills.

### Skills / knowledge to be developed:

They will work together in teams to complete different tasks. This will allow them to become competitive and work with different people with a focus on developing team work.

### Applied through:

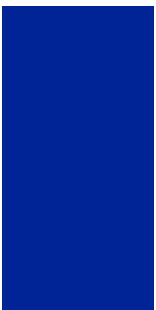




Children will develop their techniques through structured P.E lessons, participating in team games and taking on individual responsibility within their team.


P.E. this term will be on a Friday afternoon.



### How can I help / information for helping

Please ensure that children have both an outdoor and indoor kit in school (including trainers) for the whole week as other indoor and outdoor sessions might take place at alternative times.

French	Music	PSHE / MindMate	R.E.
<p><b>Focus:</b> hobbies and interests.  <b>Skills / knowledge to be developed:</b> We will learn new vocabulary linked to hobbies, developing this into constructing simple sentences using correct grammar.  <b>Applied through:</b> Using the 'Jolie Ronde' scheme of work, developing reading skills in discovering other children's interests and writing longer sentences which outline our own interests.</p> <div data-bbox="116 826 573 1136" style="display: flex; justify-content: space-around; align-items: center;">   </div>	<p><b>Focus:</b> singing.  <b>Skills / knowledge to be developed:</b> We will learn the song 'Stop Bullying' using the Charanga program. We will explore how this is linked to our SMSC of thinking of others and continue to embed the importance of raising awareness of anti-bullying.  <b>Applied through:</b> Music lessons and whole school singing practise.</p> <div data-bbox="651 762 1043 1098" style="text-align: center;">  </div>	<p><b>Focus:</b> drugs, alcohol and tobacco education.  <b>Skills / knowledge to be developed:</b> We will look closely at the theme 'Thinking of Others', as well as how to treat ourselves. We will learn about the risks associated with drugs, alcohol and tobacco, gaining an understanding of the different influences connected with these.  <b>Applied through:</b> PSHE lessons, circle time.</p> <div data-bbox="1155 868 1563 944" style="text-align: center;">  </div>	<p><b>Focus:</b> Should we forgive others?  <b>Skills / knowledge to be developed:</b> developing children's knowledge of forgiveness and reconciliation in their lives and in Christianity. Children will explore stories from the New Testament and how they are a guide of values and commitments for Christian people.  <b>Applied through:</b> Circle time, RE lessons, discussion.</p> <div data-bbox="1632 767 2125 1042" style="text-align: center;">  </div>
<p><b>How can I help / information for Helping</b>  Discuss what the children have learnt and get them to teach someone else in their family.</p>	<p><b>How can I help / information for Helping</b>  Encourage your child to practise singing at home.  Discuss how this song links to our SMSC of thinking of others with a focus on how bullying someone would make them feel.</p>	<p><b>Mindmate Lesson:</b>  This term our Mindmate lesson will be about 'mindfulness' and applying these strategies to our daily life to improve wellbeing.  <b>How can I help / information for Helping</b>  Discuss the risks associated with drugs, alcohol and tobacco.</p>	<p><b>How can I help / information for Helping</b>  Encourage children to think about how they themselves can forgive others and can relate to stories in the New Testament and other religious texts.  Encourage them to be aware of alternative religions and beliefs.</p>

Homework	Any Other Information / Dates for the Diary
<p><b><u>Ongoing Homework</u></b></p> <ul style="list-style-type: none"> <li>• <b>KIRF target:</b> See maths section</li> <li>• <b>Reading:</b> a <b>minimum</b> of 15 minutes reading every night (logged by the children and noted in their reading record).</li> <li>• <b>Times Tables:</b> see Homework Log Sheet</li> <li>• <b>Spellings:</b> learn the lists sent home and words outlined as common errors in their Homework Log Sheet. <i>Please see the class teacher if your child has not logged information on the sheet.</i></li> </ul> <p><b>Please continue to log children's progress with these activities on the weekly homework sheet – children earn House Points for each part that is fully completed.</b></p> <p><b><u>Maths / English Homework</u></b></p> <p>Homework is distributed on alternative weeks. Homework is given out on a Thursday, to be returned the following Tuesday. <b>Please encourage your children to discuss their homework at home in order that they develop the skills of explanation and reasoning.</b> Children will be set a Learning Log activity once during every half term. This will be related to the Enriched Curriculum. On weeks when this is set, it will replace Maths or English homework.</p>	<p><b>Monday 2<sup>nd</sup> March</b> – Book in a Box competition  <b>Thursday 5<sup>th</sup> March</b> – World Book Day  <b>Tuesday 17<sup>th</sup> March</b> – Class Photographs  <b>Thursday 19<sup>th</sup> March</b> – Mother's day gift shopping for children  <b>Tuesday 24<sup>th</sup> March</b> – The Railway Children Production  <b>Thursday 26<sup>th</sup> March</b> – PTA Disco with Mr Shuffles. KS2 4.45pm-5.45pm.  <b>Wednesday 1<sup>st</sup> April</b> – Parent teacher consultation meetings</p> <p>Please ensure that your child has a water bottle in school every day. They must remember to take it home every evening to wash the bottle and bring it in to school already full. This will ensure that the bottles are kept clean and germ-free for the children's use each day.</p> <p>We encourage you to follow our school Twitter account @BramhamShadwell. We post regular updates and photographs of what your children are learning in class alongside other important school information, reminders and updates.</p> 



Thank you, as always, for your continuous help and support. If you have any queries please do not hesitate to contact us or make an appointment at the office to arrange a meeting after school.

Miss Cammiss