

# SHAW RIDGE PRIMARY SCHOOL NEWSLETTER



TERM 4 - MARCH 2026

## HEAD TEACHERS NOTE

Dear Parents/Carers,



The weeks between Christmas and Easter have flown by and it's lovely to have finally seen some sunshine. We have been really busy focusing on our learning and I am very proud of what each and every child has achieved.

This year, as part of our recent Comic Relief activities, the school council asked us to contribute to class joke collections to encourage us to laugh. Laughter is the best medicine to support our mental health and wellbeing. As the days get longer and the evenings lighter, it is a great time to get outside more and build a healthy lifestyle. Our councillors also raised money by running a cake/ toys stall, demonstrating their enterprise and organisational skills.

We have enriched our curriculum with visits to Bristol Museum (Year 3) and Sevington Victorian School (Year 5). Bike-ability was offered to year 4 and year 5 pupils, with sessions planned for year 6 later in the year. On Beep-Beep day, KS1 focused on learning about road safety: including crossing the road safely and how to be safe when in a car. Visiting speakers, such as the police and kooth team, have helped our children learn important lessons about staying safe, making good choices, and looking out for themselves and others.

This term, we say goodbye to Mrs Salter who has done a terrific job in Poplar class, covering Mrs Coates' maternity leave since September. We have really valued the positive contribution she has made and wish her luck as she moves to Millbrook primary school.

Our school's transition from The Grove Learning Trust to a new federation continues to be a positive step forward, bringing new opportunities and support. We currently have a service level agreement with the White Horse Federation. As our current CEO, Andrew Wilson, leaves to join HMI Ofsted, Simon Cowley, Director of Education in The White Horse Federation, will take on the role of interim CEO, continuing to support us on our school improvement journey, along with his team.

I hope you have a happy Easter break.

Mrs Cowell

## Comic Relief top jokes...

What do you call an American bee?

A USB!



What's the best thing about Switzerland?

I don't know, but the flags a big plus!



What do you call two robbers?

A pair of knickers!



# SHAW RIDGE PRIMARY SCHOOL NEWSLETTER



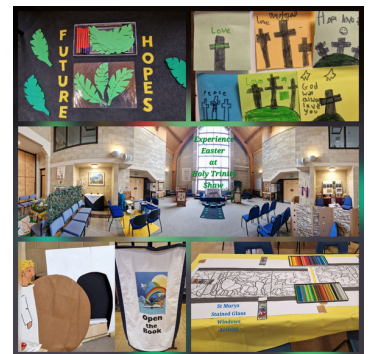
## WHAT'S BEEN HAPPENING?

Firefighters from Westlea Fire station visited Holly and Oak class along with their fire engine as part of our learning about people who help us. We all got chance to climb into the cab - luckily in PE we have been practicing using the wall bars because it was a steep climb! Much laughter was heard as each child held the hose pipe and sprayed water.



## Y3 Easter Workshop

Year 3 visited Holy Trinity church for their Easter experience. Reverend Clive Deverell organised small groups journeying around the church to complete different activities related to the Easter story. As headteacher I was proud to receive an email from the church team praising their excellent learning behaviours.



## Year 5 become Archers

The team from Premier Education visited us on Thursday and led the whole school in an assembly on the importance of physical exercise to become healthy. After that each year 5 class had the opportunity to learn Archery in a safe environment.

## Swimming at Shaw Ridge

Year 4 Poplar class have completed a week intensive swim course at the Link Centre. Swimming is an essential part of the National Curriculum with the aim that all children can swim competently, confidently and proficiently over a distance of at least 25m by the end of year 6. Well done Poplar class on the progress you showed over the week. After Easter it will be the turn of Maple class. So if you are in Maple class, don't forget your swimming kits on Monday 13<sup>th</sup> April.



# SHAW RIDGE PRIMARY SCHOOL NEWSLETTER



## Revolution Performing Arts assembly

On Friday we had a fantastic assembly led by Fi and Liberty from Revolution Performing Arts. a huge well done to the amazing children who got up to perform, demonstrating courage and resilience, two of our school values. We are so proud of you all. Several children expressed an interest after watching the performance. If your child is interested please get in touch with Fi.



## Easter Bonnet competition

Easter bonnets are made to symbolise renewal and the arrival of Spring. This year we had over 200 entries to our Easter Bonnet competition. A winner from each class was chosen and received a prize from the Friends of Shaw Ridge. Thank you to all who entered. We have some very creative children!



## DATES FOR THE DIARY

**13.4.26 Start of term 5**

**14.4.26 Year 2 Berkeley castle trip**

**16.4.26 Year 1 Family SEAL group 1 - first session**

**16.4.26 FOSR Committee meeting**

**22.4.26 School Discos**

**23.4.26 Year 1 trip to Cotswold Wildlife Park**

**11.5.26 Year 6 SAT week**

**18.5.26 Year 5 Bikeability week**

**21.5.26 Census Day - Special lunch menu**

**22.5.26 End of term 5**

**<https://shaw-ridge-primary-school.schudio.com/calendar> - Keep up to date with the school calendar here**

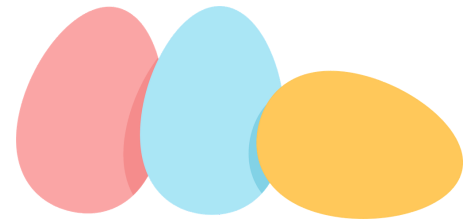
\*Due to unforeseen circumstances, dates can be subject to change.

# SHAW RIDGE PRIMARY SCHOOL NEWSLETTER



## SCHOOL LUNCHES TERM 5 MENU

Our Term 5 menus are on a 3-week cycle throughout the term



### Meal Bookings reminder

All school meals must be booked via the **Arbor Parent Portal or App**. Please note that meal bookings close **24 hours in advance**. We are no longer able to take same-day emergency bookings, and if a lunch has not been booked or provided, parents will be contacted to bring one in.

### How to Book Meals on Arbor

- **Access the Portal/App** – Log in to the Arbor Parent Portal or App.
- **Check Balances & Top Up** – Open the Meals section to view your balance (shown in red if negative) and use Top up account to add funds.
- **Make Meal Choices** – Select your child's meal options from the menu or set regular choices.
- **Free School Meals (FSM)** – If your child is eligible, FSM entitlement will be shown in their profile and will automatically cover the cost.

Shaw Ridge - Summer 2026 - Week One

Monday	Tuesday	Wednesday	Thursday	Friday
Cheese, Tomato & Basil Pizza with Seasoned Wedges	Savoury Fried Rice with Turkey & Ham & Hoisin	Roast Turkey, Stuffing & Roast Potatoes & Gravy	Beef Lasagne with Garlic Bread	Fish Fingers with Chip Shop Chips & Ketchup
Cheese & Leek Croquette with Fresh Tomato Sauce	Creamy Vegetable Curry & Steamed Rice	Vegetable Rosti with a Tomato & Red Onion Salsa	Tomato & Basil Pasta & Garlic Bread	Vegetable Goujons with Chips & Ketchup
Jacket Potato Bar with Cheese, Baked Beans or Tuna Mayonnaise	Jacket Potato Bar with Cheese, Baked Beans or Tuna Mayonnaise	Jacket Potato Bar with Cheese, Baked Beans or Tuna Mayonnaise	Jacket Potato Bar with Cheese, Baked Beans or Tuna Mayonnaise	Jacket Potato Bar with Cheese, Baked Beans or Tuna Mayonnaise
Sweetcorn / Seared Courgettes	Garlic Green Beans / Roasted Cauliflower	Roasted Carrots / Garden Peas	Broccoli Florets / Sweetcorn	Baked Beans / Mushy Peas
Cold Offer: Cheese Salad Bap with sides from the Salad Bar	Cold Offer: Ham & Tomato Wrap with sides from the Salad Bar	Cold Offer: Egg Mayonnaise Bap with sides from the Salad Bar	Cold Offer: Cheese & Tomato Bap with sides from the Salad Bar	Cold Offer: Tuna Salad Wrap with a side of Chips & Salad Bar
Cold Offer: Egg Salad Bap with sides from the Salad Bar	Cold Offer: Cheese & Chive Wrap with sides from the Salad Bar	Cold Offer: Sausage Baguette with sides from the Salad Bar	Cold Offer: Turkey Salad Bap with sides from the Salad Bar	Cold Offer: Cheese & Tomato Wrap with a side of Chips & Salad Bar
Rice Pudding & Jam Sauce	Jam Sponge & Custard	Cheese & Crackers or Fruit Smoothie	Chocolate Cookies	Choc ice

**Available daily**  
Fruit Yoghurt - Fresh Fruit Platter - Salad Bar Selection & Freshly Baked Bread.  
Weeks Commencing:  
13th April, 4th May, 15th June, 6th July

**HARRISON**  
food with thought

# SHAW RIDGE PRIMARY SCHOOL NEWSLETTER



## School lunches- Term 5

Shaw Ridge - Summer 2026 - Week Two

**Weekly menu**

Monday	Tuesday	Wednesday	Thursday	Friday
3 Cheese Wholemeal Penne Pasta with Green Salad	Beef Chilli Con Carne, Rice & Nachos	Beef & Yorkshire Pudding, Roasted Potatoes	Braised Sausage in Onion Gravy with Mashed Potato	Beef Burgers in a Bun, Chips & Tomato Sauce
Golden Savoury Vegetable Rice & Quorn Sausage Bites	Creamy Mixed Vegetable Fricassee with Rice	Roasted Vegetable Wellington with a Spinach Salad	Vegetable Pie topped with Puff Pastry served with Creamed Potato	Vegetarian Burgers in a Soft Roll, Chips & a Side Salad
Jacket Potato Bar with Cheese, Baked Beans or Tuna Mayonnaise	Jacket Potato Bar with Cheese, Baked Beans or Tuna Mayonnaise	Jacket Potato Bar with Cheese, Baked Beans or Tuna Mayonnaise	Jacket Potato Bar with Cheese, Baked Beans or Tuna Mayonnaise	Jacket Potato Bar with Cheese, Baked Beans or Tuna Mayonnaise
Peas / Sweetcorn	Broccoli Florets / Cauliflower	Lemon Carrots / Savoy Cabbage	Green Beans / Vegetable Medley	Baked Beans / Garden Peas
Cold Offer: Cheese & Chive Mayo Baguette with sides from the Salad Bar	Cold Offer: Sausage Bap with sides from the Salad Bar	Cold Offer: Tuna Mayo & Sweetcorn Wrap, sides from the Salad Bar	Cold Offer: Egg Salad Baguette with sides from the Salad Bar	Cold Offer: Cheese & Tomato Bap with sides of Chips & Salad Bar
Cold Offer: Egg Mayo Baguette with sides from the Salad Bar	Cold Offer: Cheese & Carrot Bap with sides from the Salad Bar	Cold Offer: Cheese Salad Bap with sides from the Salad Bar	Cold Offer: Turkey Coronation Baguette with sides from the Salad Bar	Cold Offer: Tuna & Cucumber Bap with sides of Chips & Salad Bar
Marbled Sponge with Chocolate Sauce	Lemon & Rhubarb Sponge with Custard	Cheese & Crackers or Fruit Smoothie	Chocolate Brownie Tray Bake	Vanilla Ice Cream Tub

**Available daily**  
Fruit Yoghurt - Fresh Fruit Platter - Salad Bar Selection & Freshly Baked Bread.  
Weeks Commencing:  
20th April, 11th May, 1st June, 22nd June, 13th July

**HARRISON**  
food with thought

Shaw Ridge - Summer 2026 - Week Three

**Weekly menu**

Monday	Tuesday	Wednesday	Thursday	Friday
Vegetable Lasagne	Creamy Chicken Curry with Naan Bread & Fluffy Rice	Baked Gammon with Roasted Baby Potatoes	Tuna Pasta Bake	Chicken Goujons, Chipped Potatoes & Tomato Sauce
Shepherdess Pie topped with Carrot & Potato Topping	Five Bean Chilli Con Carne & Rice topped with Crispy Nachos	Vegetable Bolognese Bake with Garlic Bread	Vegetarian Sausage in Gravy with Cheesy Mash	Vegetable Bites Chips & Ketchup
Jacket Potato Bar with Cheese, Baked Beans or Tuna Mayonnaise	Jacket Potato Bar with Cheese, Baked Beans or Tuna Mayonnaise	Jacket Potato Bar with Cheese, Baked Beans or Tuna Mayonnaise	Jacket Potato Bar with Cheese, Baked Beans or Tuna Mayonnaise	Jacket Potato Bar with Cheese, Baked Beans or Tuna Mayonnaise
Mixed Vegetables / Tossed Salad	Cauliflower / Broccoli Florets	Braised Red Cabbage / Carrots	Green Beans / Mixed Vegetables	Baked Beans / Mushy peas
Cold Offer: Cheese & Carrot Wrap with sides from the Salad Bar	Cold Offer: Turkey & Lettuce Baguette with sides from the Salad Bar	Cold Offer: Cheese & Cucumber Bap with sides from the Salad Bar	Cold Offer: Cheese & Tomato Wrap with sides from the Salad Bar	Cold Offer: Egg Mayo Baguette with a side of Chips
Cold Offer: Egg Mayo Wrap with sides from the Salad Bar	Cold Offer: Egg Salad Baguette with sides from the Salad Bar	Cold Offer: Pork Salad Bap with sides from the Salad Bar	Cold Offer: Sausage & Red Onion Wrap with sides from the Salad Bar	Cold Offer: Tuna Salad Baguette with a side of Chips
Vanilla Sponge & Custard	Apple Toffee Cake & Custard	Cheese & Crackers or Fruit Smoothie	Carrot Cake & Custard	Chocolate Ice Cream Tub

**Available daily**  
Fruit Yoghurt - Fresh Fruit Platter - Salad Bar Selection & Freshly Baked Bread  
Weeks Commencing:  
27th April, 18th May, 8th June, 29th June, 20th July

**HARRISON**  
food with thought

# SHAW RIDGE PRIMARY SCHOOL NEWSLETTER



School lunches- Term 5

## Special lunch menu - Thursday 21<sup>st</sup> May

The menu graphic features a purple wood-grain background. At the top left is the logo for 'HARRISON food with thought'. To the right are three circular icons: a banana on a purple circle, a bunch of grapes on a yellow circle, and a bunch of green leafy vegetables on a green circle. The text 'Census Day' is in white, and 'Menu' is in white on a red rectangular background. Below this, a white box contains a list of menu items in black text.

**HARRISON**  
food with thought

**Census Day**  
**Menu**

- Hot Dogs in a Finger Roll**
- Vegan Dogs in a Finger Roll**
- Skin on Potato Wedges**
- Barbecue Baked Beans**
- Sweetcorn**
- Artic Roll**

# SHAW RIDGE PRIMARY SCHOOL NEWSLETTER



## ATTENDANCE

---

# 100%

### Attendance Matters

Good attendance is vital for children to make the most of their learning. Every day in school helps build confidence, friendships and key skills.

Our whole-school attendance for this academic year is currently 96%. Our Autumn Terms attendance was 95.9% with the Spring Term attendance figures increasing slightly to 96.2%. Let's try and improve on this as we enter into the summer term!

Thank you to all families who support helping to achieve good attendance figures —your effort really makes a difference! It's good to see so many of our pupils arriving each day ready to learn, grow and achieve their best.

### **Why attendance is important:**

- Children with high attendance achieve better academically
- Lessons build on previous learning—missing a day can mean missing key knowledge
- Regular attendance supports social development and friendships

### **How you can help:**

- Ensure your child arrives on time every day so they are ready to learn.
- Avoid taking holidays during term time
- Let the school office know promptly if your child is unwell

### **Morning registration:**

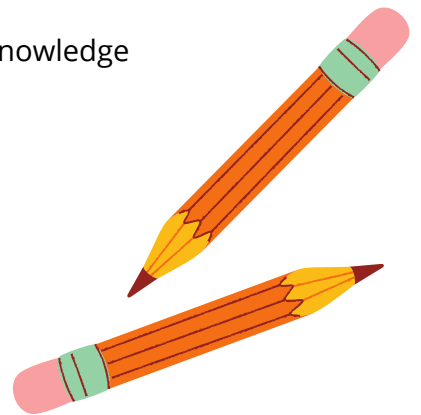
Gates are open from 8.30am and school starts at 8:45am each morning. Registration and morning tasks take place in the first few minutes in class, so punctuality is important.

### **Arbor Parent App**

You can view your child's attendance on the home page on your Arbor Parent App. This updates daily and so allows you to track your child's attendance. If you have any questions about attendance please contact Mrs Westlake in the school office who would be happy to help.

If your child is finding it difficult to attend school, please speak to us—we are here to help and support.

**Remember: Every day counts!**



# SHAW RIDGE PRIMARY SCHOOL NEWSLETTER



 Follow us @ShawRidgePrimary

## HARRISON CATERING VACANCY

### JOB VACANCY – KITCHEN ASSISTANT

**Harrison Catering** are pleased to offer an exciting opportunity to join our school team!

**Position:** Kitchen Assistant

**Hours:** 15 hours per week

**Working Days:** Monday to Friday

**Time:** 11:00am – 2:00pm

**Term Time Only**



We are looking for a reliable and enthusiastic individual to support our busy school kitchen. This is a great opportunity to work in a friendly environment and be part of a supportive team.

#### Interested?

For more information or to apply, please contact:

**Dave Smith (Catering Manager)**

[Shaw.ridge@harrisoncatering.co.uk](mailto:Shaw.ridge@harrisoncatering.co.uk)



# SHAW RIDGE PRIMARY SCHOOL NEWSLETTER



 Follow us @ShawRidgePrimary

## HELPFUL INFORMATION



### PLACES WHERE KIDS EAT FREE (OR FOR £1) EASTER HOLIDAYS 2026

[moneysavingcentral.co.uk/kids-eat-free](https://moneysavingcentral.co.uk/kids-eat-free)



#### **ANGUS STEAKHOUSE**

Kids under 8 eat FREE daily, 12pm to 5pm

#### **ASDA**

Kids eat for £1 daily, with no adult spend

#### **ASK ITALIAN**

2 Kids eat free from 27th March - 19th April 2026

#### **BELLA ITALIA**

Children eat free Sunday - Thursday

#### **BEEFEATER & BREWERS FAYRE**

2 Kids Eat Free Breakfast with one paying adult

#### **BILLS**

Kids eat free Mon 30th March - Fri 10th April

#### **BREWDOG**

Kids eat free 28th March - 12th April 2026

#### **CAFE ROUGE**

Kids Eat FREE 12-4pm every day of the week

#### **COCONUT TREE**

Kids eat free Mon 30th March - Sun 19th April

#### **CHIQUITO**

Kids eat free during all school holidays

#### **DOBBIES GARDEN CENTRES**

Kids eat for £1 with an adult breakfast or lunch

#### **FARMHOUSE INNS**

Kids eat FREE weekdays 30th March - 17th April

#### **FRANKIE & BENNY'S**

Kids eat FREE daily from 30th March - 17th April

#### **FUTURE INNS**

Under 5s eat for free with any adult meal

#### **GORDON RAMSEY RESTAURANTS**

Kids under 10 eat FREE all day, every day

#### **IKEA**

Kids get a meal from 95p daily from 11am

#### **LAS IGUANAS**

Kids under 12 eat FREE with 'My Las Iguanas' App

#### **MORRISONS**

Kids Eat FREE all day, every day with a £5 spend

#### **MARCO PIERRE WHITE**

Kids under 12 Eat FREE daily with an adult spend

#### **PAUSA CAFE @ DUNELM**

Kids eat FREE with every £4 spend all day

#### **PIZZA HUT**

Kids Eat Free Every Day after 3pm

#### **PREMIER INN**

2 kids eat for free with 1 adult breakfast

#### **PRETO**

Kids up to age 10 eat free with 1 paying adult

#### **PUREZZA**

Kids under 10 get free pizza with every adult meal

#### **SA BRAINS PUBS**

Kids eat for £1 on Wednesdays

#### **SUBWAY**

Kids eat Free from the 6th - 13th April

#### **SIZZLING PUBS**

Kids eat for £1, Every Monday to Friday, 3 - 7pm

#### **TABLE TABLE**

2 Kids Eat free breakfast daily with 1 paying adult

#### **TGI FRIDAYS**

Kids Eat Free with any adult meal (Via App)

#### **THE REAL GREEK**

Kids under 12 eat FREE Sundays with £10 spend

#### **TRAVELODGE**

2 kids eat for free with 1 adult breakfast

#### **TURTLE BAY**

Kids eat free with every £15 adult spend

#### **WHITBREAD INNS**

2 Kids eat for FREE with 1 adult breakfast

#### **YO! SUSHI**

Kids eat free all day (weekdays) in school holidays

Copyright of MONEY SAVING CENTRAL

# SHAW RIDGE PRIMARY SCHOOL NEWSLETTER



 Follow us @ShawRidgePrimary

## REMINDERS...

### **The Friends of Shaw Ridge:**

Shaw Ridge has an excellent **P**arent **T**eachers **A**ssociation who work very hard to organise events to raise money for our children. All parents are automatically members of the **P.T.A.** If you would be interested in supporting the work of the FOSR the next meeting is taking place on Thursday 05th June at 6.30pm in the school staff room.

### **Summer Term:**

In light of the warmer weather please could we remind you all to apply suncream to your child before they arrive at school. In addition, please could we ask you to consider providing your child with a spare bottle of named suncream that they can keep in school to reapply throughout the day, as well as a sun hat and a water bottle.

### **Mobile Phones:**

Mobile phones are not permitted in school except by special arrangement, when they must be handed to a member of staff. The school takes no responsibility for personal property, even when handed to staff. We strongly advise you not to allow your child to bring any valuables to school.

### **Summer Term Uniform :**

We have noticed that some uniform choices being made are not in line with our policy, particularly regarding footwear. Please take some time to re-familiarise yourself with the school's uniform policy and do please ask if you have any specific questions. Please also note that hair accessories should be simple and that hair at shoulder length or longer should be tied up (this applies to all children).

### **Absence reporting**

Please can we remind you to report every day your child is absent by 8.30am either by leaving a message on our absence line - 01793 871601 or by emailing [absence@shawridge.sch.uk](mailto:absence@shawridge.sch.uk) with the reason for their absence. Thank you for your co-operation



01793 871601



[admin@shawridge.swindon.sch.uk](mailto:admin@shawridge.swindon.sch.uk)



Swindon, SN5 5PU



[shawridgeprimary.org.uk](http://shawridgeprimary.org.uk)

# SHAW RIDGE PRIMARY SCHOOL NEWSLETTER



 Follow us @ShawRidgePrimary

## REMINDERS...

### **Someone else collecting your child?**

If someone else will be collecting your child at the end of the school day, you **MUST** inform the school office in advance. Please provide the full name and telephone number of the person collecting your child, so we can update our records. For safeguarding reasons, we are unable to release children to anyone who is not listed or authorised.

### **A Reminder About Dogs on School Premises:**





We'd like to kindly remind all families that dogs are not permitted on the school site unless they can be carried in your arms. We understand that dogs are a cherished part of many families within our school community, and we also value the special role our school dog plays during 'Wag Day Wednesday'. However, for the safety and comfort of all our students, we ask for your co-operation in keeping pets at home during drop-off and pick-up times. Please also ensure that dogs are not tied to the school gates or fences at any of the entrances. Some children are cautious or fearful around dogs, and we want to make sure everyone feels safe and at ease coming into school.

### **Water Bottles :**

We kindly remind all parents and carers of the importance of sending their child to school each day with a refillable water bottle filled with water. Staying hydrated supports children's concentration, learning, and overall well-being throughout the school day. Unfortunately, we are unable to provide cups in the classroom, as we do not have facilities to ensure they can be sanitised daily. Please ensure your child brings a named, refillable water bottle to school every day.

### **Absence reporting**

Please can we remind you to report **every day your child is absent** by 8.30am either by leaving a message on our absence line - 01793 871601 with the reason for their absence.

-  01793 871601
-  [admin@shawridge.swindon.sch.uk](mailto:admin@shawridge.swindon.sch.uk)
-  Swindon, SN5 5PU
-  [shawridgeprimary.org.uk](http://shawridgeprimary.org.uk)

# SHAW RIDGE PRIMARY SCHOOL NEWSLETTER



 Follow us @ShawRidgePrimary

## HELPFUL INFORMATION



Find out  
more here



## Find out more about becoming a Foster Carer with a local Social Enterprise.

Talk to us today about:

- Short and long-term fostering.
- Training and career development.
- Foster Carer payment and allowances.
- Working for a Social Enterprise.

0333 0603 962 | [five-rivers.org/fostering](https://www.five-rivers.org/fostering)

