

Our main aim is a love of life and learning Happiness is the key and our children's happiness, safety, security and love are at the heart of our achievements for each individual child.

Shawclough Community School Newsletter

Issue 37
Week ending 11/07/25



FOOD HYGIENE RATING



VERY GOOD

We are glad to report that yet again Shawclough School has received a 5 star rating from the Food Standards Agency. Well done to our wonderful kitchen manager Derese and her girls, Michelle, Joanne, Shagufta and our business Ms Calleja for all their hard work!

CHANGING OF DINNER PATTERN?

Want to change dinner pattern? Not a problem. However, we do require a 2 week notice period. Up to and including year 2, children are entitled to Universal Free School Meals. If you feel you still may be entitled to FSM after year 2, please take an eligibility check form from the office.

PEEK AT THE WEEK - RECEPTION



Reception are very excited to learn about maps, especially Google maps. They used the map to find out what's around school and used it to follow directions.

NEW UNIFORM – DISCOUNT CODE



Use code 'INTAKE10' at the checkout to receive 10% discount of your purchase.
Promotion code valid until 31st July 2025

You can follow us on 

<https://shawclough.rochdale.sch.uk/>

PTA are on



ATTENDANCE

Attendance (%) for week ending 4/7/25

2 CORAL/RUBY	100.0
1 LAVENDER/RAINFOREST/3 AMBER	98.8
4 ORANGE	98.5
6 SCARLET	98.4
5 CHERRY	98.1
1 PURPLE	97.7
4 YELLOW	96.9
3 LEMON	96.4
2 SUNSHINE/RECEP TURQUOISE	95.0
NURSERY OCEAN	94.9
5 CHERRY	93.6
6 RED	93.8
RECEP BLUE	93.3
SAPPHIRE	92.9
NURSERY SKY	88.9
GOLD	88.6

**WELL DONE CORAL & RUBY CLASSES –
GOOD JOB GUYS!**

EVERY SCHOOL DAY MATTERS

Penalty Notice Fines for School Attendance are Changing!

With the introduction of the new National Framework for Penalty Notices, the following changes will come into force for Penalty Notice Fines issued after 19th August 2024.

Per Parent, Per Child

Penalty Notice Fines will now be issued to each parent, for each child that was absent.

For example; 3 siblings absent for term time leave, would result in each parent receiving 3 separate fines.

First Offence

The first time a Penalty notice is issued for Term Time Leave or Irregular Attendance, the amount will be:

- £160 per parent, per child paid within 28 days.
- Reduced to £80 per parent, per child if paid within 21 days.

Third Offence and Any Further Offences (within 3 years)

The third time an offence is committed for Term Time Leave or Irregular Attendance a Penalty Notice will not be issued, and the case will be presented straight to the Magistrate's Court. Magistrates' fines can be up to £2500 per parent, per child. Cases found guilty in Magistrates Court can show on the parent's future DBS certificate, due to 'failure to safeguard a child's education.'

5 Consecutive Days of Term Time Leave

Penalty Notice Fines will be issued for Term Time Leave of 5 or more consecutive days. INSET training days are school days and can be included in the 5 or more consecutive days where there was intent to be absent for term time leave.

10 sessions of unauthorised absence in a 10-week period

Penalty Notice Fines will be considered when there has been 10 sessions of unauthorised absence in a 10 week period.

Second Offence

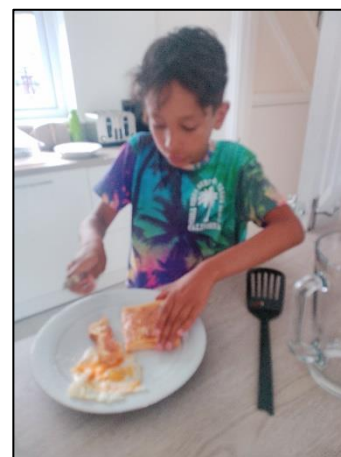
The second time a Penalty Notice is issued for Term Time Leave or Irregular Attendance the amount will be:

- £160 per parent, per child paid within 28 days.



**WHEN YOU ARE PUNCTUAL, YOU
SHOW THAT YOU VALUE YOUR
RESPONSIBILITIES AND RESPECT
THE TIME OF OTHERS.**

PEEK AT THE WEEK – YEAR 5



Children were challenged to practice helping around the home and using basic first aid. Sonny, Zishan and Mehjabeen rose to the occasion – they have been very busy!

Shawclough school is **CASHLESS**. We accept payments by **CARD ONLY**. Please ensure you have downloaded the **GATEWAY APP** to receive information about school and make payments.



PEEK AT THE WEEK – YEAR 5



Poppy class had a visit to Rochdale Town Hall and also walked around different land marks. They enjoyed posing like a Monarch in the Great Hall and being in the stocks at St Chads.

PARKING AND TRAFFIC AROUND SCHOOL

We are still receiving calls of complaints by our neighbours who live around the school, parents experiencing threats of violence by other parents, bad language, being aggressive towards school staff – the list goes on. The worst thing is, our children are witnessing all of this.



The safety and wellbeing of our children is one of our utmost priorities, in and around our school.

We request that parents understand that their negative behaviour affects the children – IT IS NOT OK.

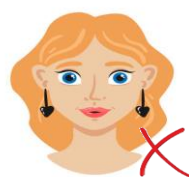
Traffic police periodically come to our school and will issue tickets. The school **will not** intervene on your behalf. Waiting in the turning circle, parking on yellow lines – will get you a parking fine.

There is plenty of parking on Whitworth Road and Paton Street and it is barely a 5 minute walk. The church has kindly offered us their carpark to use but please do not abuse this permission by parking dangerously and blocking the entrance/exit.

WARNING: The residents of The Spinney (small road opposite the school) are now working with a private company to clamp any cars that block the entrance/exit. You have been advised to park away from The Spinney. If you are clamped, the school have no power or say in removal of any clamp.

JEWELLERY IN SCHOOL

Just a reminder that children **are not permitted to wear large earrings** to school. Only small studs are permitted. No other jewellery should be worn.



HEAD LICE

Every so often there is an outbreak of Head lice in a class. **There's no need to keep your child off school if they have head lice.**

If you find that your child has head lice, please follow the advice below:

You can treat head lice without seeing a GP.

Treat head lice as soon as you spot them and treat anyone else who has head lice on the same day.

Wet combing:

Lice and nits can be removed by wet combing. You should try this method first.

You can buy a special fine-toothed comb (detection comb) online or from pharmacies to remove head lice and nits. There may be instructions on the pack, but usually you:

- wash hair with ordinary shampoo
- apply lots of conditioner (any conditioner will do)
- comb the whole head of hair, from the roots to the ends

It usually takes about 10 minutes to comb short hair, and 20 to 30 minutes for long, frizzy or curly hair.

Do wet combing on days 1, 5, 9 and 13 to catch any newly hatched head lice. Check again that everyone's hair is free of lice on day 17.

PLEASE NOTE: Unfortunately, our school does not have an onsite nurse to check regularly for head lice. It is therefore it is parental responsibility to check regularly and treat appropriately.



**JUST A
REMINDER THAT
SHAWCLOUGH
SCHOOL &
EVERYWHERE
INSIDE THE
BOUNDARY IS :-**



SCREEN-FREE ACTIVITIES FOR THE SUMMER

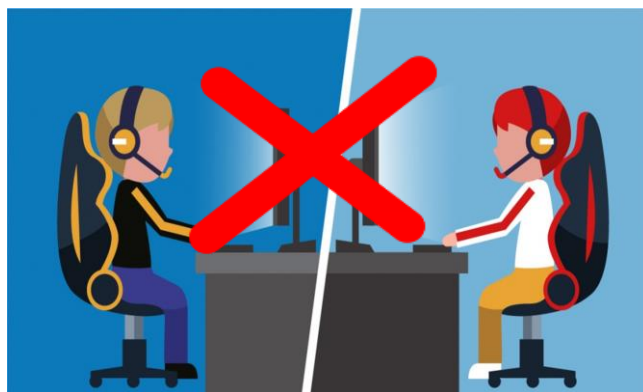
Looking for SCREEN-FREE activities for the kids to do over the summer holidays? Well look no further. The three links below will take you to an endless list (well not really endless) but a ton of activities you children can do over the summer break that don't involve going online and most will get them outdoors.

Take a look you might be surprised at how easy they are to access or arrange.

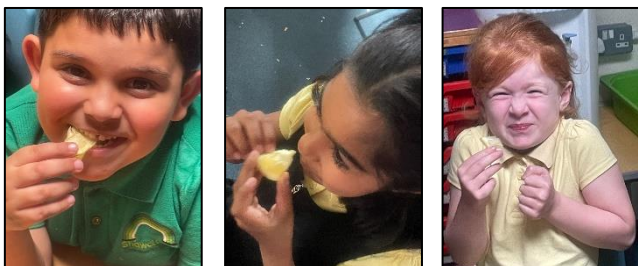
<https://www.girlguiding.org.uk/what-we-do/blog/101-screen-free-activities/>

<https://www.rochdalecreates.co.uk/townofculture>

<https://summerreadingchallenge.org.uk/>



PEEK AT THE WEEK – YEAR 1



Year 1 have been tasting foods and sorting them into different textures.

Shawclough school is **CASHLESS**. We accept payments by **CARD ONLY**. Please ensure you have downloaded the **GATEWAY APP** to receive information about school and make payments.



LOST PROPERTY

We have a number items of lost property (NOT CLOTHING) in the office, including small items of jewellery - that have been left in the hall during PE lessons.

If you think any item may belong to your child, please call at the school office and claim it. Thank you.

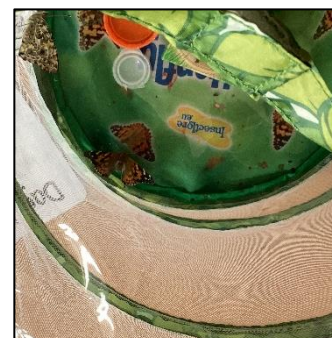
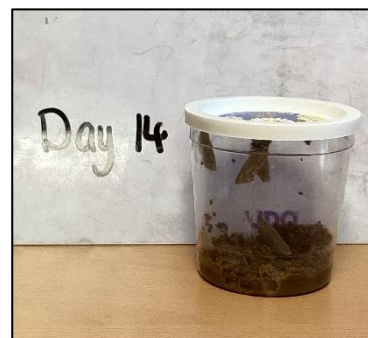
PEEK AT THE WEEK – YEAR 3/4/5



PEEK AT THE WEEK – YEAR 5 SLEEPOVER



Year 5 girls having fun, doing craft and playing games at the year 5 sleepover.



This was a joint project between year 3/4/5. They looked after and hatched caterpillar that turned into butterflies. The process took approximately 3 weeks after which the butterflies were released.

REMINDER:

Please remember hats and sunscreen, the weathers is getting warmer again.
Sunscreen must be applied to children before they come to school. (Water bottles were applicable).

DATES FOR YOUR DIARY



15 th	Final Performance		Year 6
15 th	Ribchester Trip		Year 3
16 th	End of year celebration		Nursery only
18 th	End of term – 1pm finish Summer Holidays!		Whole school

You can follow us on  <https://shawclough.rochdale.sch.uk/>

PTA are on



PEEK AT THE WEEK – WHOLE SCHOOL



When the staff are more excited about the Wonkalicious Bar sale than the kids! The PTA popup shop was extremely successful. But who will win a Golden Ticket?

PEEK AT THE WEEK – YEAR 2



Year 2 did their end of year performance this week and what a brilliant performance it was. All their parents were invited and had a jolly good time. Well done year 2 and well done the teachers and TAs that helped them prepare.

Shawclough school is **CASHLESS**. We accept payments by **CARD ONLY**. Please ensure you have downloaded the **GATEWAY APP** to receive information about school and make payments.



COMMUNITY NOTICES

Eliza says

Summer Holiday Hub

Ages 4-11

VENUE: Crossgates Primary School
Kiln Ln. Minrow. OL16 3HB

Whos joining us?

- 28th July - Star tree studio arts & crafts
- 29th July - Cooking with Pat
- 30th July - Sport with Trident
- 31st July - Football with Azeem
- 1st August - Fur, feathers & scales
- 4th August - Sport with Trident
- 5th August - Dancing
- 6th August - The Dojo karate
- 7th August - Star tree studio arts & craft
- 8th August - Fur, Feathers & scales

Registration HAF:
[https://app.holidayactivities.com/login?](https://app.holidayactivities.com/login?email=&signup=false)
email=&signup=false

Registration now HAF:
Elizasays@hotmail.com
Facebook @elizasays

junior parkrun - where everyone is welcome



junior parkrun is a free, fun, friendly, weekly, community event organised by volunteers of all ages for children aged 4 to 14.

2k junior parkrun events take place on Sunday mornings and are for the whole community to come together to walk, jog, run and volunteer. Join in on the fun at junior parkrun!

junior parkrun event: **Falings Park junior parkrun**

Location: **Falings Park, Falings Road, Rochdale OL12 6JE**

Time: 9:00am for start



junior parkrun

SEND TRANSITION DROP IN

Who?
Does your child have Special Educational Needs and/or a Disability (SEND) and is starting Primary school in September 2025?

What?
Meet with staff from HMR Health Visiting, HMR School Nursing, Family Hub, Early Support Keyworker Team, SEND Advice Line and Area SENCO for informal support and advice with any aspect of your child's transition to school.

When?
Friday 11th July
10:00 - 12:00

Where?
Newbold Family Hub
Moss Street
Rochdale
OL16 5NL

No diagnosis needed
No need to book

NHS
Northern Care Alliance
NHS Group

ROCHDALE BOROUGH COUNCIL
Raising Rochdale MAKING OUR BOROUGH A GREAT PLACE FOR ALL TO GROW UP, GET ON AND LIVE WELL.

Rochdale Borough Family Hubs

Support that grows with you

Howard Street Family Hub

Summer Sessions for Age 5 to 12

Key Dates

Thursday 31st, July 10 to 12 pm Sports theme Cup and ball craft Biscuits	Friday 22nd August- 10-12pm Growing-plants Tasting- vegetables and dips
Thursday 7th August- 10-12 pm Friendship bracelets Play dough Fruit kebabs	Thurs 28th August- 10-12pm Mindfulness Worry dolls (pegs) Colouring
Friday 15th Aug- 10-12 pm Recycling/ environment Jar craft Collage World buns	

Each week there will be special guests from local services and charities including Rochdale hornets, Living well, School nurses, Neurodiversity hub and the parenting and relational team.



SCAN ME

You can follow us on  <https://shawclough.rochdale.sch.uk/>

PTA are on

